



Australian Government

Department of Infrastructure, Regional Development and Cities

Bureau of Infrastructure, Transport and Regional Economics

STATISTICAL REPORT



Aviation

Domestic airline on time performance
January 2019

© Commonwealth of Australia 2019

ISSN: 1832-0759

Ownership of intellectual property rights in this publication

Unless otherwise noted, copyright (and any other intellectual property rights, if any) in this publication is owned by the Commonwealth of Australia (referred to below as the Commonwealth).

Disclaimer

The material contained in this publication is made available on the understanding that the Commonwealth is not providing professional advice, and that users exercise their own skill and care with respect to its use, and seek independent advice if necessary.

The Commonwealth makes no representations or warranties as to the contents or accuracy of the information contained in this publication. To the extent permitted by law, the Commonwealth disclaims liability to any person or organisation in respect of anything done, or omitted to be done, in reliance upon information contained in this publication.

Creative Commons licence

With the exception of (a) the Coat of Arms; and (b) the Department of Infrastructure, Regional Development and Cities' photos and graphics, copyright in this publication is licensed under a Creative Commons Attribution 3.0 Australia Licence.

Creative Commons Attribution 3.0 Australia Licence is a standard form licence agreement that allows you to copy, communicate and adapt this publication provided that you attribute the work to the Commonwealth and abide by the other licence terms. A summary of the licence terms is available from <http://creativecommons.org/licenses/by/3.0/au/deed.en>. The full licence terms are available from <http://creativecommons.org/licenses/by/3.0/au/legalcode>.

Use of the Coat of Arms

The Department of the Prime Minister and Cabinet sets the terms under which the Coat of Arms is used. Please refer to the Department's Commonwealth Coat of Arms and Government branding web page <http://www.dpmc.gov.au/guidelines/index.cfm#brand> and, in particular, the Guidelines on the use of the Commonwealth Coat of Arms publication.

An appropriate citation for this report is:

Bureau of Infrastructure, Transport and Regional Economics (BITRE), 2019, Domestic airline on time performance, Statistical Report, BITRE, Canberra ACT.

Contact us

This publication is available in PDF format. All other rights are reserved, including in relation to any Departmental logos or trade marks which may exist. For enquiries regarding the licence and any use of this publication, please contact:

Bureau of Infrastructure, Transport and Regional Economics (BITRE)
Department of Infrastructure, Regional Development and Cities
GPO Box 501, Canberra ACT 2601, Australia
Telephone: (international) +61 2 6274 7210
Fax: (international) +61 2 6274 6855
Email: bitre@infrastructure.gov.au
Website: www.bitre.gov.au

Inquiries

Should you require additional information about the statistics contained in this publication:

Telephone (02) 6274 7790 or Facsimile (02) 6274 7727

Electronic mail: AVSTATS@infrastructure.gov.au

Web site: <http://www.bitre.gov.au/statistics/aviation/otphome.aspx>

Foreword

The Bureau of Infrastructure, Transport and Regional Economics (BITRE) monitors the punctuality and reliability of major domestic airlines operating between Australian airports. The purpose of this is to allow for evaluation of overall industry and individual airline performance, so that consumers of air travel can make informed decisions.

The following domestic airlines currently report this information monthly to the BITRE: Jetstar, Qantas, QantasLink, Regional Express, Tigerair Australia, Virgin Australia and Virgin Australia Regional Airlines. Data has been gathered since November 2003, although some airlines commenced reporting at a later date, including Jetstar which first reported in May 2004, MacAir in July 2005, Tigerair Australia in April 2008 and Virgin Australia Regional Airlines in May 2013. MacAir ceased operations in February 2009 and data was not received for December 2008 onwards. Virgin Blue was rebranded as Virgin Australia in May 2011 and Tiger Airways was rebranded as Tigerair Australia in July 2013 and time series data in Microsoft Excel spreadsheet format on the BITRE website have been revised to reflect these changes. Services operated by Skywest on behalf of Virgin Australia using ATR/F100 aircraft commenced in November 2011 and were shown separately as Virgin Australia – ATR/F100 Operations. Virgin Australia Regional Airlines commenced operations in May 2013. It was formed after the acquisition of Skywest by Virgin Australia and represented a combination of operations previously reported under Skywest and Virgin Australia – ATR/F100 Operations. In January 2016, Virgin Australia transferred their ATR fleet from Virgin Australia Regional Airlines to Virgin Australia.

Information presented in this report is for Australian domestic routes for which the passenger load averaged 8 000 or more passengers per month over the previous six months and where two or more airlines operated in competition on those routes. There were 65 routes that met this definition in January 2019. Over time, routes which meet these criteria change as airline networks and traffic levels vary.

Participating airlines report their overall monthly network performance where this is possible.

Total industry figures encompass all services operated by reporting airlines only. These airlines collectively carried over 95 per cent of total domestic passengers (regular public transport only) in 2018.

The method of capturing on time performance varies between airlines utilising different recording systems. Jetstar and Qantas jet aircraft use Aircraft Communication Addressing and Reporting System (ACARS) to electronically measure on time performance. Regional Express, Tigerair Australia, Virgin Australia, Virgin Australia Regional Airlines and the Qantas non-jet fleet record on time performance manually using records from pilots, gate agents and/or ground crews.

After initial data is collected, aggregate reports are audited internally by participating airlines prior to publication.

Reports and detailed time series data in Microsoft Excel spreadsheet format are available from the BITRE website at: <http://www.bitre.gov.au/statistics/aviation/otphome.aspx>.

Contents

	Page
Industry performance	1
Individual routes	10
Airports.....	24
Definitions	30

Industry performance

For January 2019, on time performance over all routes operated by participating airlines (Jetstar, Qantas, QantasLink, Regional Express, Tigerair Australia, Virgin Australia and Virgin Australia Regional Airlines) averaged 84.4 per cent for on time arrivals and 84.7 per cent for on time departures. Cancellations represented 1.9 per cent of all scheduled flights. The equivalent figures for January 2018 were 85.0 per cent for on time arrivals, 85.1 per cent for on time departures and 1.5 per cent for cancellations.

This month's on time arrivals figure was higher than the long term average performance for all routes (82.5 per cent) and the on time departures figure was also higher than the long term average (83.8 per cent). The rate of cancellations was higher than the long term average of 1.5 per cent.

Qantas achieved the highest on time arrivals among the major domestic airlines at 86.1 per cent followed by Virgin Australia at 85.5 per cent, Jetstar at 79.1 per cent and Tigerair Australia at 69.4 per cent. Of the regional airlines, QantasLink recorded 89.8 per cent for on time arrivals, followed by Regional Express at 84.8 per cent and Virgin Australia Regional Airlines at 82.5 per cent. The Qantas network (Qantas and QantasLink combined operations) recorded 88.1 per cent for on time arrivals while the Virgin Australia network (Virgin Australia and Virgin Australia Regional Airlines combined operations) recorded 85.3 per cent.

Qantas also achieved the highest level of on time departures among the major domestic airlines for January 2019 at 86.8 per cent, followed by Virgin Australia at 85.8 per cent, Jetstar at 76.5 per cent and Tigerair Australia at 69.4 per cent. Of the regional airlines, QantasLink recorded 90.8 per cent for on time departures, followed by Regional Express at 88.6 per cent and Virgin Australia Regional Airlines at 86.2 per cent. The Qantas network recorded 88.9 per cent for on time departures while the Virgin Australia network recorded 85.8 per cent.

Tigerair Australia recorded the highest percentage of cancellations (8.8 per cent) during the month, followed by Jetstar (2.7 per cent), Qantas (1.5 per cent), Virgin Australia (1.4 per cent), QantasLink (1.0 per cent), Regional Express (0.6 per cent) and Virgin Australia Regional Airlines (0.4 per cent).

Airlines' on time performance varies across the routes they serve. Individual route data by specific airline for 65 routes are shown on pages 10-23.

Of the 65 routes which met the criteria for on time performance reporting in January 2019, the Brisbane-Mount Isa route had the highest percentage of on time arrivals (100.0 per cent) and the Darwin-Alice Springs route had the highest percentage of on time departures (98.0 per cent). The Proserpine-Sydney route had the lowest percentage of on time arrivals (64.7 per cent) and the lowest percentage of on time departures (52.9 per cent).

Cancellations were highest on the Darwin-Alice Springs route at 7.5 per cent, followed by the Alice Springs-Darwin route at 7.4 per cent, the Sydney-Melbourne route at 6.3 per cent, the

Melbourne-Sydney route at 6.1 per cent and the Proserpine-Brisbane, Proserpine-Sydney and Sydney-Proserpine routes at 5.6 per cent.

Mount Isa Airport recorded the highest percentage of on time arrivals (100.0 per cent) and Bundaberg Airport recorded the highest percentage of on time departures (96.4 per cent). Gold Coast Airport recorded the lowest percentage of on time arrivals (77.6 per cent) and the lowest percentage of on time departures (70.8 per cent). These figures only refer to reported routes and do not cover all flights at these airports.

Table 1 On time performance for January 2019 — Total Industry

	<i>Sectors</i>		<i>Arrivals On Time</i>		<i>Departures On Time</i>		<i>Cancellations</i>	
	<i>Scheduled</i>	<i>Flown</i>	<i>No.</i>	<i>%</i>	<i>No.</i>	<i>%</i>	<i>No.</i>	<i>%</i>
Jetstar	8 749	8 510	6 733	79.1	6 512	76.5	239	2.7
Qantas	8 208	8 082	6 957	86.1	7 016	86.8	126	1.5
QantasLink	9 503	9 412	8 454	89.8	8 542	90.8	91	1.0
Regional Express	4 616	4 590	3 894	84.8	4 066	88.6	26	0.6
Tigerair Australia	2 578	2 350	1 632	69.4	1 631	69.4	228	8.8
Virgin Australia	11 678	11 509	9 843	85.5	9 869	85.8	169	1.4
Virgin Australia Regional Airlines	779	776	640	82.5	669	86.2	3	0.4
All Airlines	46 111	45 229	38 153	84.4	38 305	84.7	882	1.9
Qantas - all QF designated services	17 711	17 494	15 411	88.1	15 558	88.9	217	1.2
Virgin Australia - all VA designated services	12 457	12 285	10 483	85.3	10 538	85.8	172	1.4

Total airline network data (including routes not shown in this report).

Airlines' on time performance varies across the routes they serve. Individual route data by specific airline for 65 routes are shown on pages 10-23.

Table 2 Top ten routes for on time performance for January 2019 (participating airlines only)

<i>Arrivals</i>		<i>Departures</i>	
<i>Route</i>	<i>On Time (%)</i>	<i>Route</i>	<i>On Time (%)</i>
Brisbane-Mount Isa	100.0	Darwin-Alice Springs	98.0
Darwin-Brisbane	99.1	Darwin-Brisbane	97.2
Bundaberg-Brisbane	97.8	Perth-Newman	96.6
Darwin-Perth	96.7	Bundaberg-Brisbane	96.4
Brisbane-Emerald	96.3	Brisbane-Mount Isa	96.0
Mackay-Brisbane	96.2	Adelaide-Port Lincoln	95.2
Mount Isa-Brisbane	96.0	Mackay-Brisbane	95.2
Brisbane-Adelaide	95.9	Perth-Darwin	95.2
Townsville-Brisbane	95.8	Brisbane-Emerald	95.1
Geraldton-Perth	95.3	Brisbane-Gladstone	94.8

Table 3 Top ten airports for on time performance for January 2019 (participating airlines and reported routes only)

<i>Arrivals</i>		<i>Departures</i>	
<i>Airport</i>	<i>On Time (%)</i>	<i>Airport</i>	<i>On Time (%)</i>
Mount Isa	100.0	Bundaberg	96.4
Emerald	96.3	Mackay	95.2
Bundaberg	95.0	Gladstone	94.2
Port Lincoln	94.9	Alice Springs	93.2
Ayers Rock	94.8	Emerald	93.2
Mackay	92.7	Karratha	93.0
Gladstone	92.5	Port Lincoln	92.8
Geraldton	92.0	Newman	92.4
Newman	92.0	Rockhampton	92.4
Alice Springs	91.3	Townsville	91.6

Total industry on time performance

Figure 1 On time performance (by month from January 2016)—Total Industry

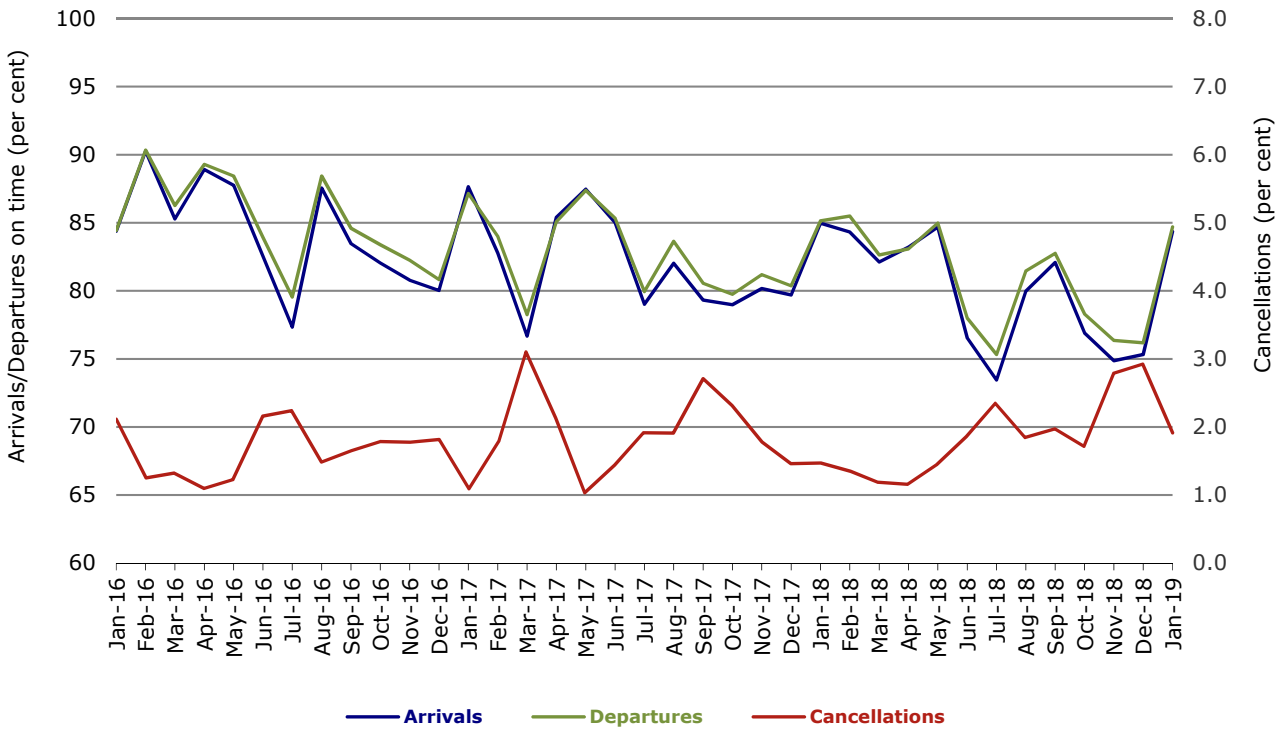


Figure 2 Arrivals on time (by month from January 2018)



Figure 3 Departures on time (by month from January 2018)

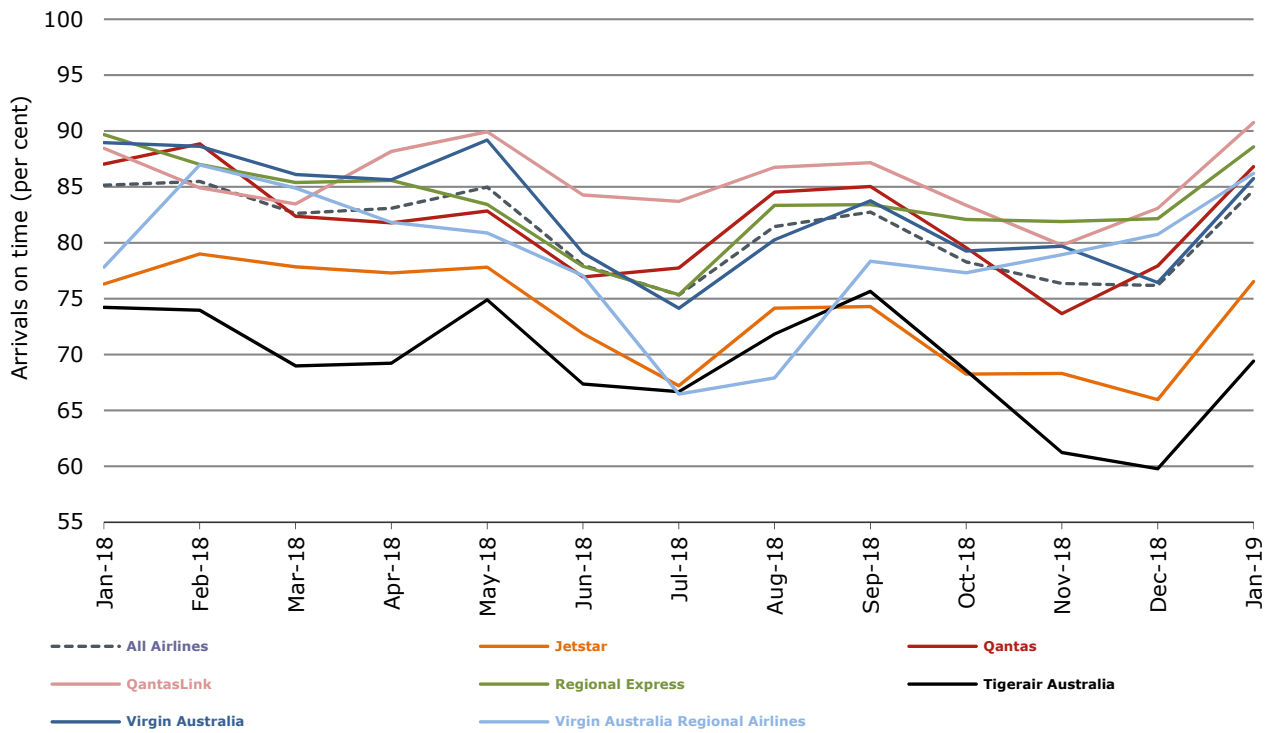
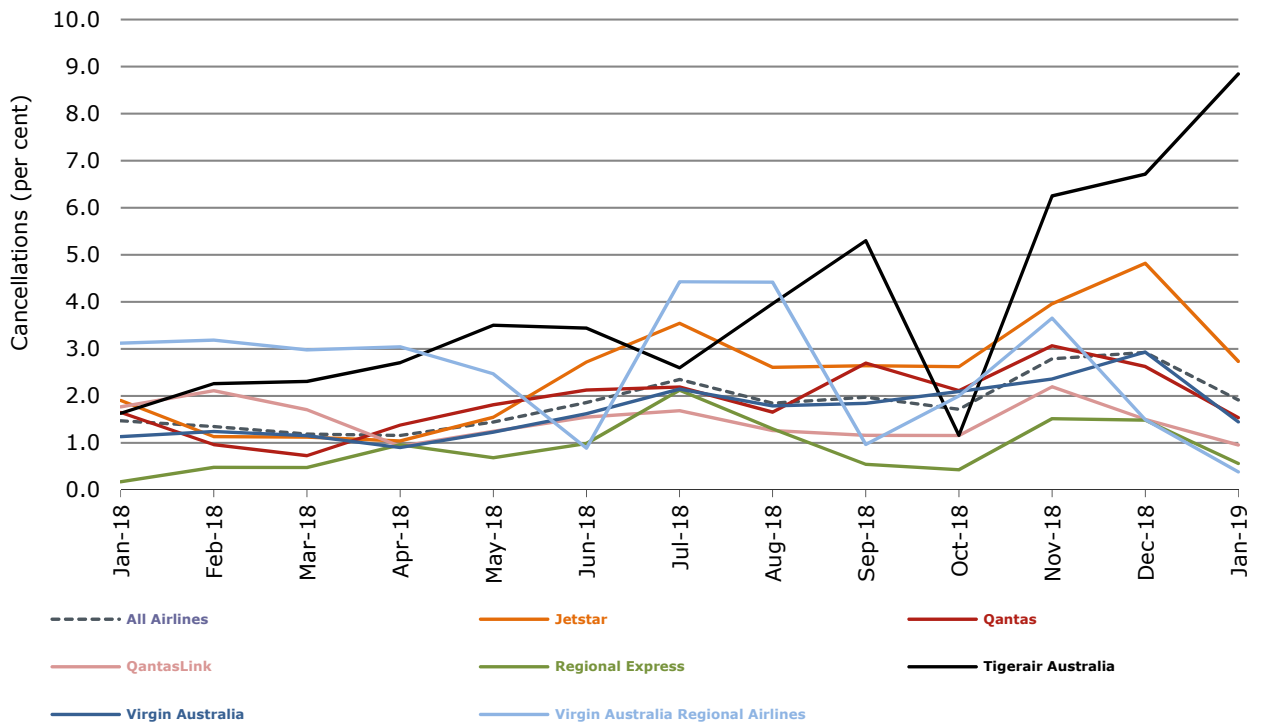


Figure 4 Cancellations (by month from January 2018)



Major domestic airlines on time performance

Figure 5 On time performance (by month from January 2016)—Jetstar

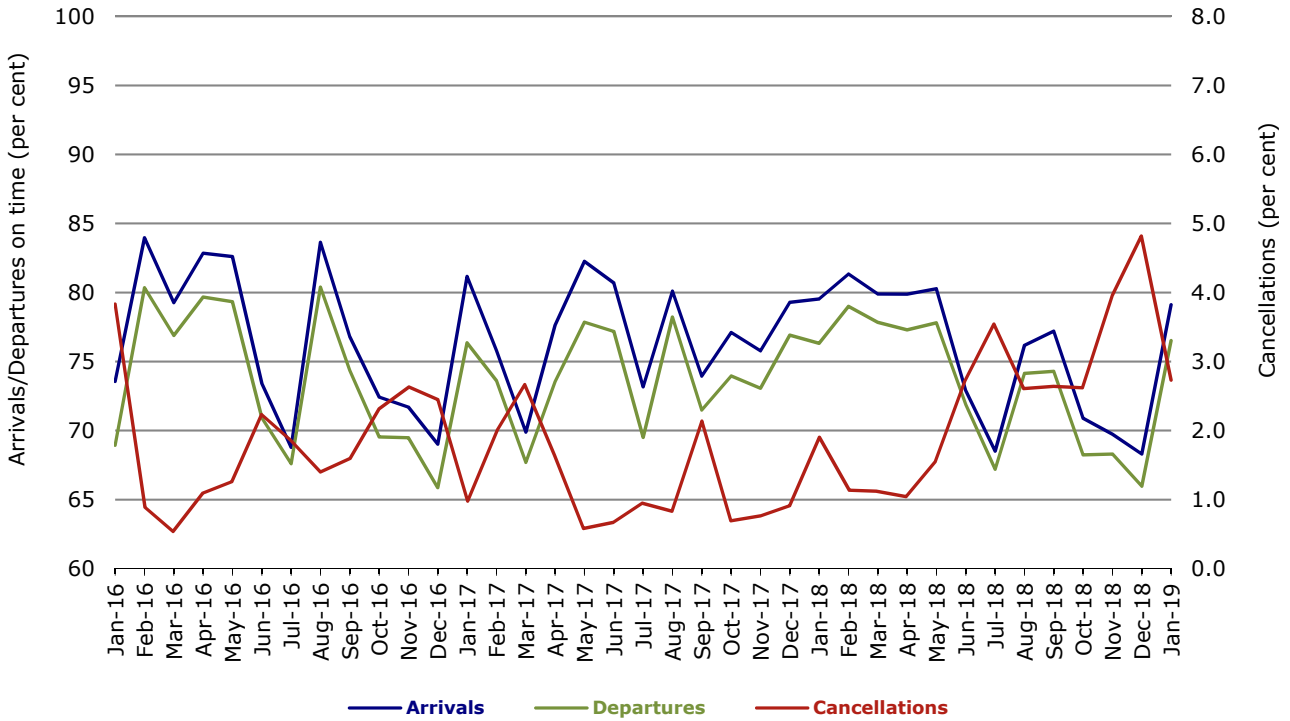


Figure 6 On time performance (by month from January 2016)—Qantas

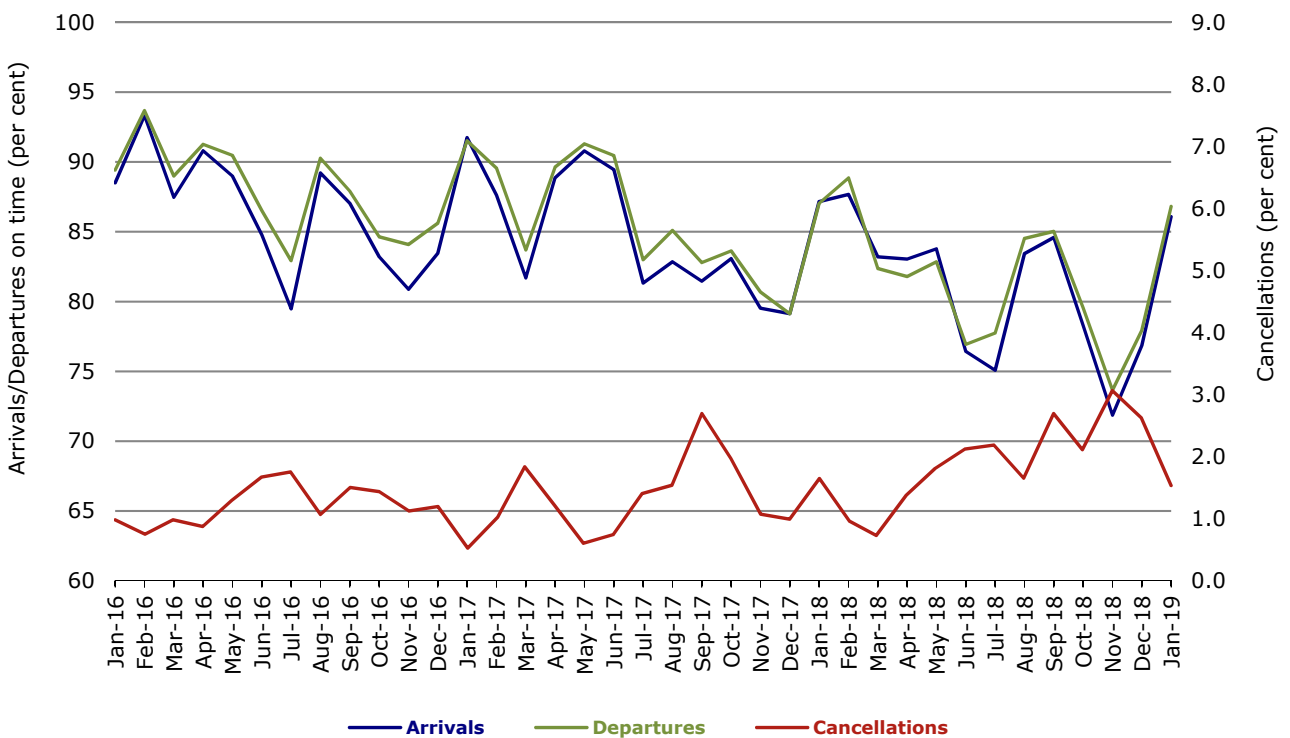


Figure 7 On time performance (by month from January 2016)—Tigerair Australia

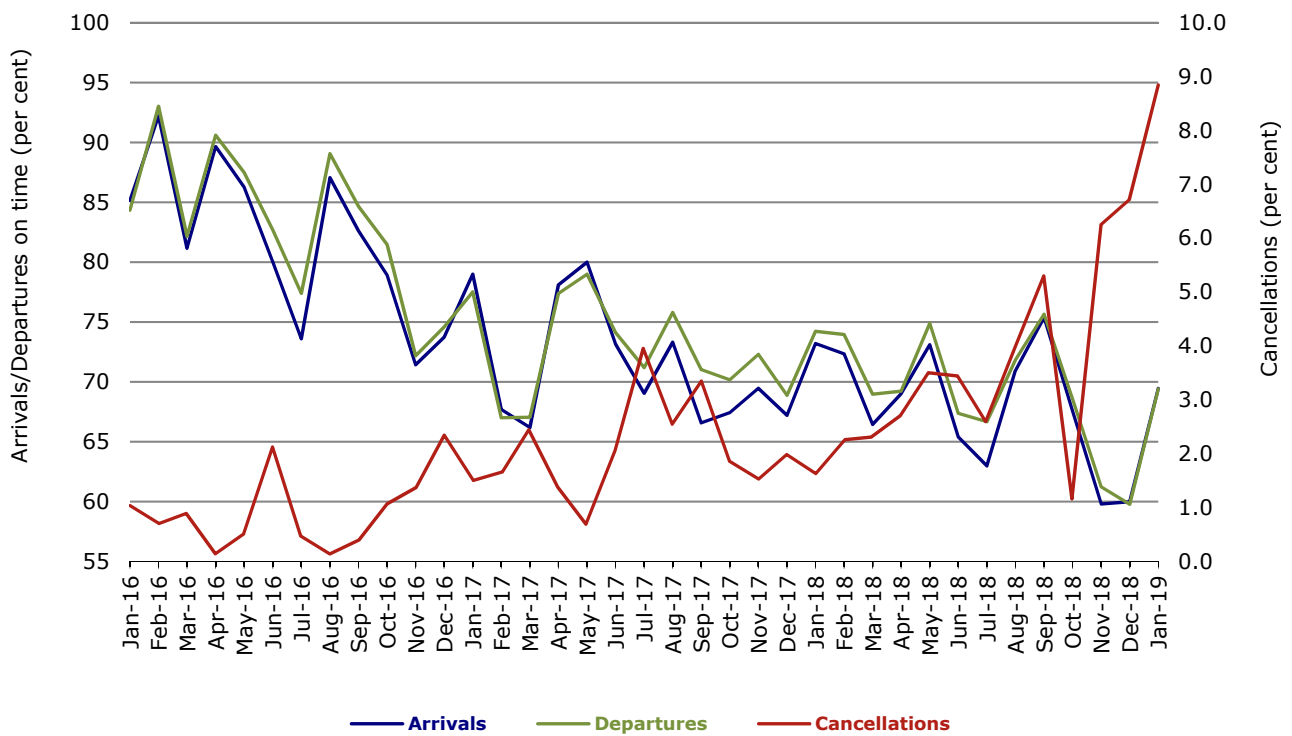
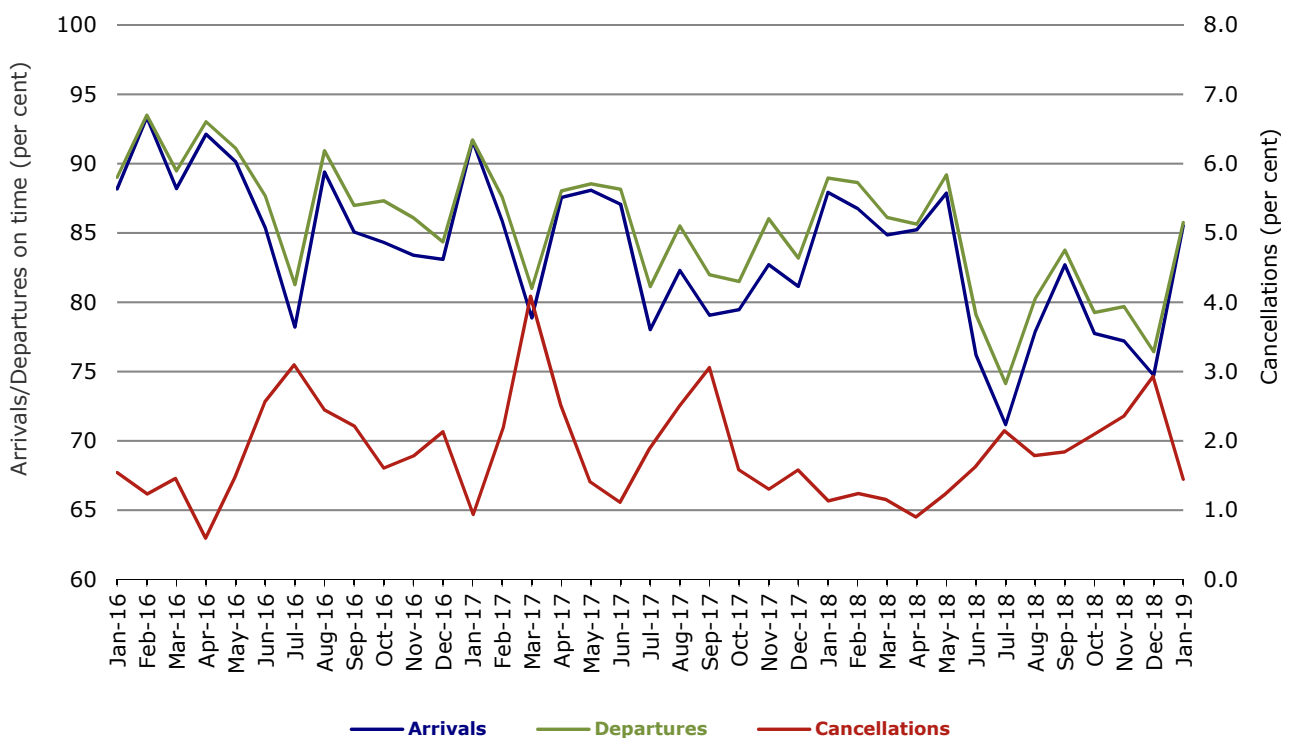


Figure 8 On time performance (by month from January 2016)—Virgin Australia



Major regional airlines on time performance

Figure 9 On time performance (by month from January 2016)—QantasLink

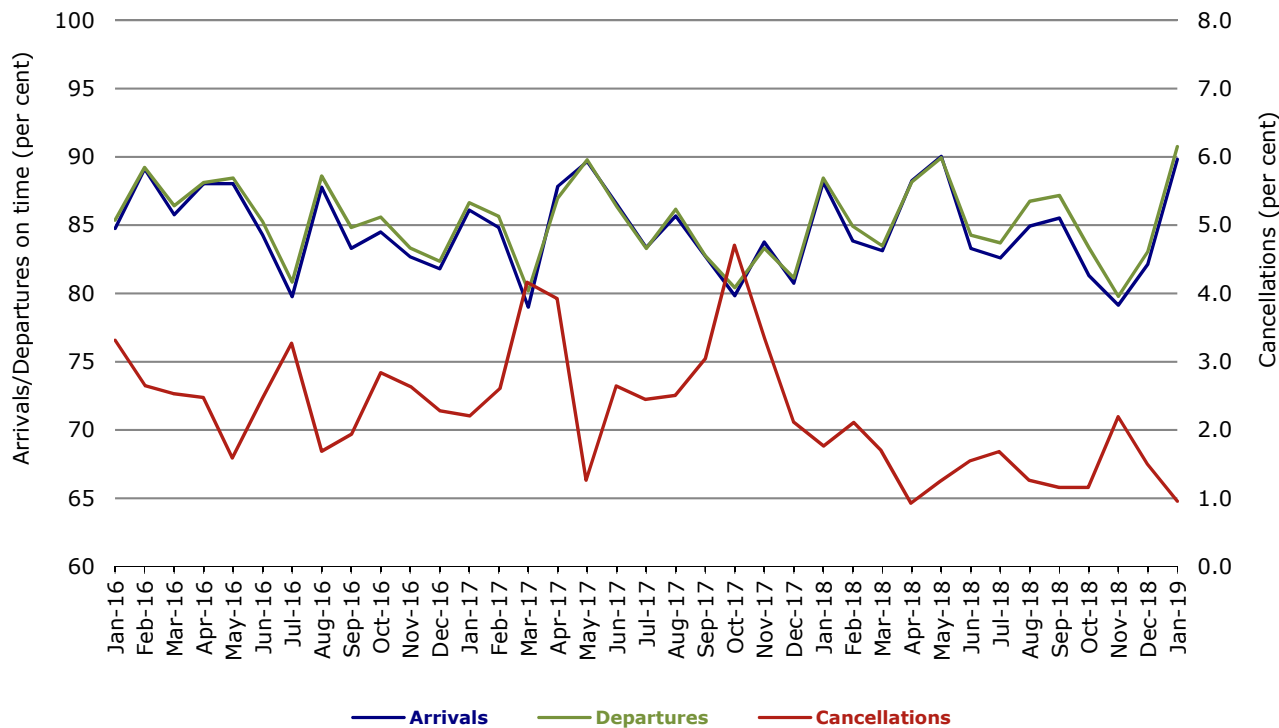


Figure 10 On time performance (by month from January 2016)—Regional Express

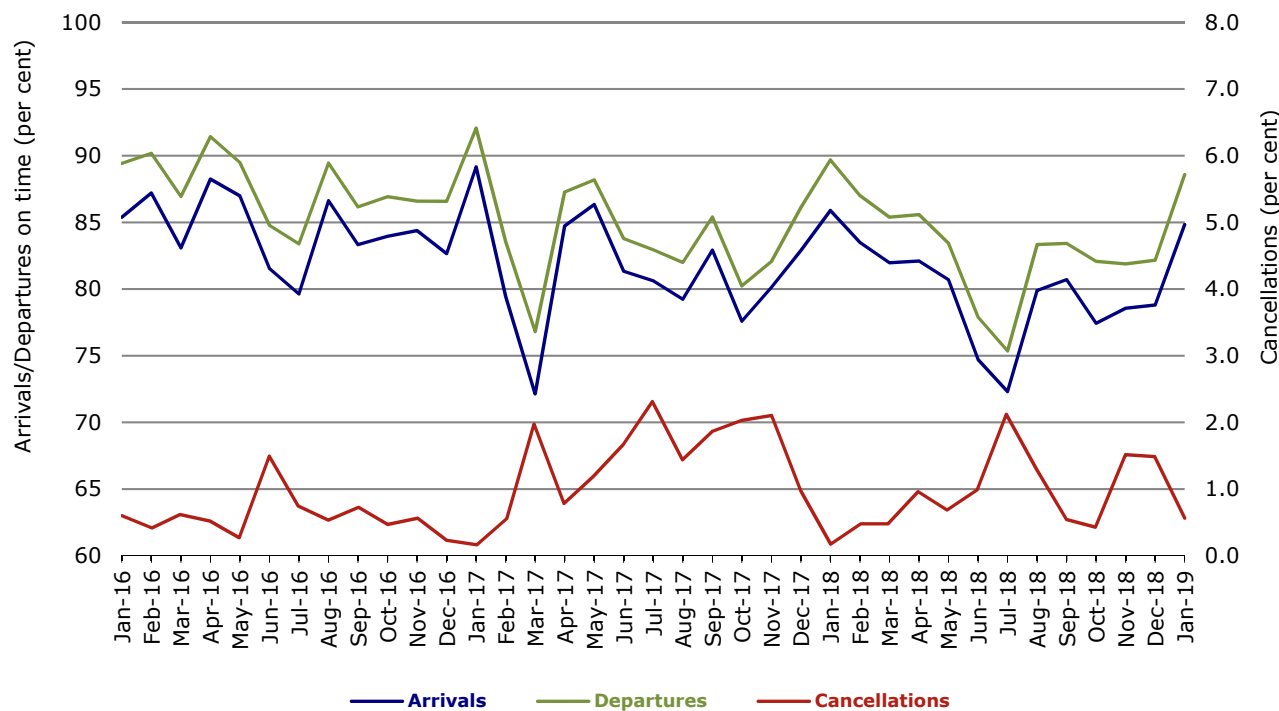
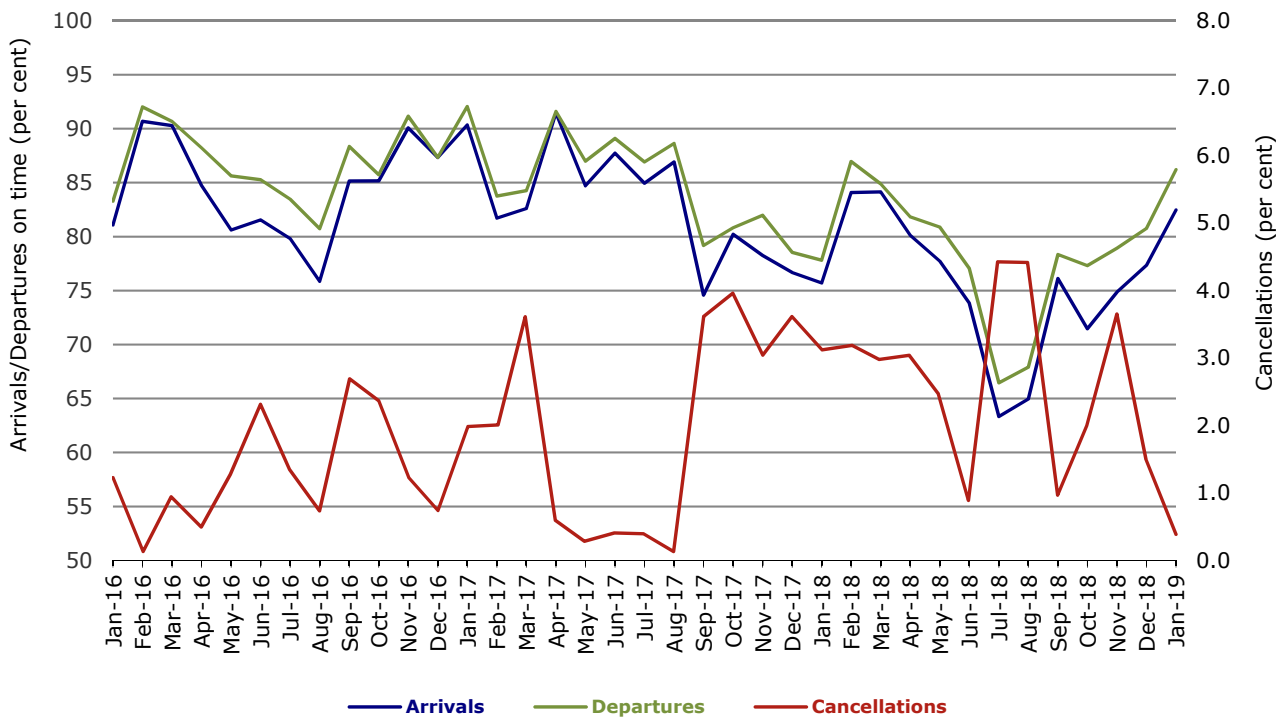


Figure 11 On time performance (by month from January 2016)
Virgin Australia Regional Airlines



Individual routes

On time performance is reported for all routes where the passenger load averages over 8000 passengers per month over the previous six months, and where two or more airlines operate in competition on those routes. There are now 65 routes which meet this definition. Over time, however, routes which meet this definition may change as airline networks and traffic levels vary.

	Sectors		Arrivals On Time		Departures On Time		Cancellations	
	Sched.	Flown	No.	%	No.	%	No.	%
Adelaide-Alice Springs								
Qantas	31	31	30	96.8	29	93.5	0	0.0
Virgin Australia	23	23	19	82.6	21	91.3	0	0.0
All Airlines	54	54	49	90.7	50	92.6	0	0.0
Adelaide-Brisbane								
Jetstar	30	30	28	93.3	27	90.0	0	0.0
Qantas	62	62	59	95.2	59	95.2	0	0.0
QantasLink	58	57	54	94.7	55	96.5	1	1.7
Tigerair Australia	31	30	25	83.3	26	86.7	1	3.2
Virgin Australia	113	113	106	93.8	105	92.9	0	0.0
All Airlines	294	292	272	93.2	272	93.2	2	0.7
Adelaide-Canberra								
Qantas	31	31	27	87.1	27	87.1	0	0.0
QantasLink	4	4	2	50.0	2	50.0	0	0.0
Virgin Australia	27	27	25	92.6	25	92.6	0	0.0
All Airlines	62	62	54	87.1	54	87.1	0	0.0
Adelaide-Gold Coast								
Jetstar	39	39	36	92.3	36	92.3	0	0.0
Virgin Australia	39	39	35	89.7	37	94.9	0	0.0
All Airlines	78	78	71	91.0	73	93.6	0	0.0
Adelaide-Melbourne								
Jetstar	123	118	93	78.8	94	79.7	5	4.1
Qantas	251	249	218	87.6	223	89.6	2	0.8
Tigerair Australia	81	77	55	71.4	54	70.1	4	4.9
Virgin Australia	266	260	230	88.5	229	88.1	6	2.3
Virgin Australia Regional Airlines	11	11	9	81.8	9	81.8	0	0.0
All Airlines	732	715	605	84.6	609	85.2	17	2.3
Adelaide-Perth								
Jetstar	30	29	27	93.1	25	86.2	1	3.3
Qantas	100	100	96	96.0	91	91.0	0	0.0
Virgin Australia	30	30	29	96.7	28	93.3	0	0.0
Virgin Australia Regional Airlines	47	47	28	59.6	29	61.7	0	0.0
All Airlines	207	206	180	87.4	173	84.0	1	0.5
Adelaide-Port Lincoln								
QantasLink	110	107	102	95.3	102	95.3	3	2.7
Regional Express	186	186	176	94.6	177	95.2	0	0.0
All Airlines	296	293	278	94.9	279	95.2	3	1.0
Adelaide-Sydney								
Jetstar	140	130	105	80.8	106	81.5	10	7.1
Qantas	215	215	193	89.8	201	93.5	0	0.0
QantasLink	30	29	28	96.6	29	100.0	1	3.3
Tigerair Australia	32	31	14	45.2	15	48.4	1	3.1
Virgin Australia	159	159	139	87.4	151	95.0	0	0.0
All Airlines	576	564	479	84.9	502	89.0	12	2.1

	Sectors		Arrivals On Time		Departures On Time		Cancellations	
	Sched.	Flown	No.	%	No.	%	No.	%
Albury-Sydney								
QantasLink	83	83	74	89.2	77	92.8	0	0.0
Regional Express	48	47	37	78.7	43	91.5	1	2.1
Virgin Australia	60	60	46	76.7	47	78.3	0	0.0
All Airlines	191	190	157	82.6	167	87.9	1	0.5
Alice Springs-Adelaide								
Qantas	31	31	29	93.5	30	96.8	0	0.0
Virgin Australia	22	22	20	90.9	20	90.9	0	0.0
All Airlines	53	53	49	92.5	50	94.3	0	0.0
Alice Springs-Darwin								
QantasLink	31	27	26	96.3	27	100.0	4	12.9
Virgin Australia	23	23	20	87.0	19	82.6	0	0.0
All Airlines	54	50	46	92.0	46	92.0	4	7.4
Armidale-Sydney								
QantasLink	109	109	88	80.7	92	84.4	0	0.0
Regional Express	39	39	36	92.3	36	92.3	0	0.0
All Airlines	148	148	124	83.8	128	86.5	0	0.0
Ayers Rock-Sydney								
Jetstar	27	27	17	63.0	17	63.0	0	0.0
Virgin Australia	31	31	25	80.6	25	80.6	0	0.0
All Airlines	58	58	42	72.4	42	72.4	0	0.0
Ballina-Sydney								
Jetstar	104	102	81	79.4	68	66.7	2	1.9
Regional Express	3	3	2	66.7	2	66.7	0	0.0
Virgin Australia	46	46	40	87.0	37	80.4	0	0.0
All Airlines	153	151	123	81.5	107	70.9	2	1.3
Brisbane-Adelaide								
Jetstar	30	30	29	96.7	26	86.7	0	0.0
Qantas	56	56	56	100.0	54	96.4	0	0.0
QantasLink	58	58	57	98.3	54	93.1	0	0.0
Tigerair Australia	31	30	26	86.7	26	86.7	1	3.2
Virgin Australia	117	117	111	94.9	102	87.2	0	0.0
All Airlines	292	291	279	95.9	262	90.0	1	0.3
Brisbane-Bundaberg								
QantasLink	108	108	104	96.3	103	95.4	0	0.0
Virgin Australia	31	31	28	90.3	28	90.3	0	0.0
All Airlines	139	139	132	95.0	131	94.2	0	0.0
Brisbane-Cairns								
Jetstar	117	115	101	87.8	101	87.8	2	1.7
Qantas	45	45	43	95.6	43	95.6	0	0.0
QantasLink	80	80	76	95.0	76	95.0	0	0.0
Tigerair Australia	31	31	24	77.4	23	74.2	0	0.0
Virgin Australia	136	135	124	91.9	123	91.1	1	0.7
All Airlines	409	406	368	90.6	366	90.1	3	0.7
Brisbane-Canberra								
QantasLink	154	154	139	90.3	140	90.9	0	0.0
Tigerair Australia	18	18	13	72.2	14	77.8	0	0.0
Virgin Australia	91	91	84	92.3	78	85.7	0	0.0
All Airlines	263	263	236	89.7	232	88.2	0	0.0

	<i>Sectors</i>		<i>Arrivals On Time</i>		<i>Departures On Time</i>		<i>Cancellations</i>	
	<i>Sched.</i>	<i>Flown</i>	<i>No.</i>	<i>%</i>	<i>No.</i>	<i>%</i>	<i>No.</i>	<i>%</i>
Brisbane-Darwin								
Jetstar	29	29	29	100.0	28	96.6	0	0.0
Qantas	31	31	31	100.0	28	90.3	0	0.0
Tigerair Australia	19	17	15	88.2	14	82.4	2	10.5
Virgin Australia	32	32	28	87.5	28	87.5	0	0.0
All Airlines	111	109	103	94.5	98	89.9	2	1.8
Brisbane-Emerald								
QantasLink	109	109	105	96.3	103	94.5	0	0.0
Virgin Australia	53	53	51	96.2	51	96.2	0	0.0
All Airlines	162	162	156	96.3	154	95.1	0	0.0
Brisbane-Gladstone								
QantasLink	124	124	111	89.5	115	92.7	0	0.0
Virgin Australia	50	50	50	100.0	50	100.0	0	0.0
All Airlines	174	174	161	92.5	165	94.8	0	0.0
Brisbane-Hamilton Island								
QantasLink	30	29	25	86.2	24	82.8	1	3.3
Virgin Australia	30	29	28	96.6	28	96.6	1	3.3
All Airlines	60	58	53	91.4	52	89.7	2	3.3
Brisbane-Hobart								
Jetstar	44	44	40	90.9	40	90.9	0	0.0
Qantas	2	2	1	50.0	2	100.0	0	0.0
Virgin Australia	43	43	41	95.3	41	95.3	0	0.0
All Airlines	89	89	82	92.1	83	93.3	0	0.0
Brisbane-Mackay								
Jetstar	31	31	29	93.5	29	93.5	0	0.0
QantasLink	128	128	119	93.0	119	93.0	0	0.0
Virgin Australia	141	141	130	92.2	126	89.4	0	0.0
All Airlines	300	300	278	92.7	274	91.3	0	0.0
Brisbane-Melbourne								
Jetstar	181	177	147	83.1	139	78.5	4	2.2
Qantas	394	389	351	90.2	359	92.3	5	1.3
QantasLink	9	9	9	100.0	9	100.0	0	0.0
Tigerair Australia	124	107	78	72.9	67	62.6	17	13.7
Virgin Australia	376	365	313	85.8	314	86.0	11	2.9
All Airlines	1 084	1 047	898	85.8	888	84.8	37	3.4
Brisbane-Mount Isa								
Qantas	31	31	31	100.0	30	96.8	0	0.0
Virgin Australia	19	19	19	100.0	18	94.7	0	0.0
All Airlines	50	50	50	100.0	48	96.0	0	0.0
Brisbane-Newcastle								
Jetstar	92	92	76	82.6	69	75.0	0	0.0
QantasLink	84	82	77	93.9	78	95.1	2	2.4
Virgin Australia	70	70	64	91.4	65	92.9	0	0.0
All Airlines	246	244	217	88.9	212	86.9	2	0.8
Brisbane-Perth								
Qantas	140	140	135	96.4	125	89.3	0	0.0
Virgin Australia	116	116	106	91.4	87	75.0	0	0.0
All Airlines	256	256	241	94.1	212	82.8	0	0.0

	Sectors		Arrivals On Time		Departures On Time		Cancellations	
	Sched.	Flown	No.	%	No.	%	No.	%
Brisbane-Proserpine								
Jetstar	44	43	39	90.7	40	93.0	1	2.3
Virgin Australia	46	43	33	76.7	38	88.4	3	6.5
All Airlines	90	86	72	83.7	78	90.7	4	4.4
Brisbane-Rockhampton								
QantasLink	170	170	151	88.8	161	94.7	0	0.0
Virgin Australia	140	140	131	93.6	128	91.4	0	0.0
All Airlines	310	310	282	91.0	289	93.2	0	0.0
Brisbane-Sydney								
Jetstar	187	175	138	78.9	139	79.4	12	6.4
Qantas	499	493	442	89.7	459	93.1	6	1.2
QantasLink	12	12	9	75.0	9	75.0	0	0.0
Tigerair Australia	118	107	74	69.2	79	73.8	11	9.3
Virgin Australia	512	497	426	85.7	428	86.1	15	2.9
All Airlines	1 328	1 284	1 089	84.8	1 114	86.8	44	3.3
Brisbane-Townsville								
Jetstar	48	48	44	91.7	43	89.6	0	0.0
Qantas	35	35	33	94.3	31	88.6	0	0.0
QantasLink	108	108	103	95.4	102	94.4	0	0.0
Virgin Australia	142	141	124	87.9	119	84.4	1	0.7
All Airlines	333	332	304	91.6	295	88.9	1	0.3
Broome-Perth								
QantasLink	84	82	77	93.9	73	89.0	2	2.4
Virgin Australia	1	1	1	100.0	1	100.0	0	0.0
Virgin Australia Regional Airlines	61	61	54	88.5	53	86.9	0	0.0
All Airlines	146	144	132	91.7	127	88.2	2	1.4
Bundaberg-Brisbane								
QantasLink	108	108	107	99.1	105	97.2	0	0.0
Virgin Australia	31	31	29	93.5	29	93.5	0	0.0
All Airlines	139	139	136	97.8	134	96.4	0	0.0
Cairns-Brisbane								
Jetstar	116	112	101	90.2	93	83.0	4	3.4
Qantas	45	45	43	95.6	43	95.6	0	0.0
QantasLink	80	79	74	93.7	74	93.7	1	1.3
Tigerair Australia	31	31	24	77.4	19	61.3	0	0.0
Virgin Australia	136	135	129	95.6	120	88.9	1	0.7
All Airlines	408	402	371	92.3	349	86.8	6	1.5
Cairns-Melbourne								
Jetstar	114	112	84	75.0	75	67.0	2	1.8
Qantas	39	39	34	87.2	29	74.4	0	0.0
Tigerair Australia	49	47	38	80.9	34	72.3	2	4.1
Virgin Australia	36	34	29	85.3	30	88.2	2	5.6
All Airlines	238	232	185	79.7	168	72.4	6	2.5
Cairns-Sydney								
Jetstar	126	121	97	80.2	98	81.0	5	4.0
Qantas	63	63	54	85.7	51	81.0	0	0.0
Tigerair Australia	35	33	28	84.8	25	75.8	2	5.7
Virgin Australia	97	96	84	87.5	83	86.5	1	1.0
All Airlines	321	313	263	84.0	257	82.1	8	2.5

	<i>Sectors</i>		<i>Arrivals On Time</i>		<i>Departures On Time</i>		<i>Cancellations</i>	
	<i>Sched.</i>	<i>Flown</i>	<i>No.</i>	<i>%</i>	<i>No.</i>	<i>%</i>	<i>No.</i>	<i>%</i>
Cairns-Townsville								
QantasLink	136	136	125	91.9	123	90.4	0	0.0
Regional Express	6	6	4	66.7	4	66.7	0	0.0
All Airlines	142	142	129	90.8	127	89.4	0	0.0
Canberra-Adelaide								
Qantas	29	29	27	93.1	27	93.1	0	0.0
QantasLink	4	4	1	25.0	2	50.0	0	0.0
Virgin Australia	27	27	24	88.9	24	88.9	0	0.0
All Airlines	60	60	52	86.7	53	88.3	0	0.0
Canberra-Brisbane								
QantasLink	154	153	141	92.2	144	94.1	1	0.6
Tigerair Australia	18	18	11	61.1	9	50.0	0	0.0
Virgin Australia	91	91	80	87.9	83	91.2	0	0.0
All Airlines	263	262	232	88.5	236	90.1	1	0.4
Canberra-Melbourne								
Qantas	199	197	178	90.4	180	91.4	2	1.0
QantasLink	33	31	28	90.3	28	90.3	2	6.1
Tigerair Australia	39	39	20	51.3	19	48.7	0	0.0
Virgin Australia	131	130	102	78.5	105	80.8	1	0.8
All Airlines	402	397	328	82.6	332	83.6	5	1.2
Canberra-Sydney								
QantasLink	300	295	259	87.8	268	90.8	5	1.7
Virgin Australia	171	167	126	75.4	130	77.8	4	2.3
All Airlines	471	462	385	83.3	398	86.1	9	1.9
Coffs Harbour-Sydney								
QantasLink	126	125	100	80.0	107	85.6	1	0.8
Tigerair Australia	27	27	19	70.4	22	81.5	0	0.0
Virgin Australia	31	31	30	96.8	30	96.8	0	0.0
All Airlines	184	183	149	81.4	159	86.9	1	0.5
Darwin-Alice Springs								
QantasLink	31	27	26	96.3	26	96.3	4	12.9
Virgin Australia	22	22	19	86.4	22	100.0	0	0.0
All Airlines	53	49	45	91.8	48	98.0	4	7.5
Darwin-Brisbane								
Jetstar	29	29	29	100.0	28	96.6	0	0.0
Qantas	31	31	31	100.0	31	100.0	0	0.0
Tigerair Australia	20	17	16	94.1	16	94.1	3	15.0
Virgin Australia	32	32	32	100.0	31	96.9	0	0.0
All Airlines	112	109	108	99.1	106	97.2	3	2.7
Darwin-Melbourne								
Jetstar	30	30	24	80.0	23	76.7	0	0.0
Qantas	27	27	21	77.8	23	85.2	0	0.0
Virgin Australia	31	31	28	90.3	29	93.5	0	0.0
All Airlines	88	88	73	83.0	75	85.2	0	0.0
Darwin-Perth								
Qantas	31	30	30	100.0	29	96.7	1	3.2
Virgin Australia	23	23	21	91.3	20	87.0	0	0.0
Virgin Australia Regional Airlines	8	8	8	100.0	8	100.0	0	0.0
All Airlines	62	61	59	96.7	57	93.4	1	1.6

	Sectors		Arrivals On Time		Departures On Time		Cancellations	
	Sched.	Flown	No.	%	No.	%	No.	%
Darwin-Sydney								
Jetstar	31	31	25	80.6	25	80.6	0	0.0
Qantas	32	32	26	81.3	27	84.4	0	0.0
Virgin Australia	30	30	27	90.0	28	93.3	0	0.0
All Airlines	93	93	78	83.9	80	86.0	0	0.0
Dubbo-Sydney								
QantasLink	99	99	75	75.8	79	79.8	0	0.0
Regional Express	83	82	65	79.3	74	90.2	1	1.2
All Airlines	182	181	140	77.3	153	84.5	1	0.5
Emerald-Brisbane								
QantasLink	109	108	98	90.7	98	90.7	1	0.9
Virgin Australia	53	53	53	100.0	52	98.1	0	0.0
All Airlines	162	161	151	93.8	150	93.2	1	0.6
Geraldton-Perth								
QantasLink	42	41	40	97.6	40	97.6	1	2.4
Virgin Australia Regional Airlines	46	45	42	93.3	38	84.4	1	2.2
All Airlines	88	86	82	95.3	78	90.7	2	2.3
Gladstone-Brisbane								
QantasLink	124	123	109	88.6	113	91.9	1	0.8
Virgin Australia	50	50	49	98.0	50	100.0	0	0.0
All Airlines	174	173	158	91.3	163	94.2	1	0.6
Gold Coast-Adelaide								
Jetstar	39	39	34	87.2	32	82.1	0	0.0
Virgin Australia	38	38	35	92.1	29	76.3	0	0.0
All Airlines	77	77	69	89.6	61	79.2	0	0.0
Gold Coast-Melbourne								
Jetstar	240	234	194	82.9	177	75.6	6	2.5
Qantas	40	40	25	62.5	19	47.5	0	0.0
Tigerair Australia	97	94	67	71.3	55	58.5	3	3.1
Virgin Australia	219	218	178	81.7	151	69.3	1	0.5
All Airlines	596	586	464	79.2	402	68.6	10	1.7
Gold Coast-Sydney								
Jetstar	343	323	246	76.2	231	71.5	20	5.8
Qantas	109	109	84	77.1	79	72.5	0	0.0
QantasLink	8	8	8	100.0	8	100.0	0	0.0
Tigerair Australia	105	96	58	60.4	54	56.3	9	8.6
Virgin Australia	268	265	216	81.5	201	75.8	3	1.1
All Airlines	833	801	612	76.4	573	71.5	32	3.8
Hamilton Island-Brisbane								
QantasLink	30	29	25	86.2	23	79.3	1	3.3
Virgin Australia	31	29	28	96.6	28	96.6	2	6.5
All Airlines	61	58	53	91.4	51	87.9	3	4.9
Hamilton Island-Sydney								
Jetstar	32	30	22	73.3	16	53.3	2	6.3
Qantas	15	15	15	100.0	15	100.0	0	0.0
QantasLink	16	16	15	93.8	15	93.8	0	0.0
Virgin Australia	30	29	26	89.7	24	82.8	1	3.3
All Airlines	93	90	78	86.7	70	77.8	3	3.2

	<i>Sectors</i>		<i>Arrivals On Time</i>		<i>Departures On Time</i>		<i>Cancellations</i>	
	<i>Sched.</i>	<i>Flown</i>	<i>No.</i>	<i>%</i>	<i>No.</i>	<i>%</i>	<i>No.</i>	<i>%</i>
Hobart-Brisbane								
Jetstar	44	44	39	88.6	38	86.4	0	0.0
Qantas	2	2	2	100.0	2	100.0	0	0.0
Virgin Australia	43	43	38	88.4	37	86.0	0	0.0
All Airlines	89	89	79	88.8	77	86.5	0	0.0
Hobart-Melbourne								
Jetstar	245	241	178	73.9	169	70.1	4	1.6
Qantas	120	120	84	70.0	94	78.3	0	0.0
Tigerair Australia	52	50	22	44.0	26	52.0	2	3.8
Virgin Australia	152	148	97	65.5	116	78.4	4	2.6
All Airlines	569	559	381	68.2	405	72.5	10	1.8
Hobart-Sydney								
Jetstar	130	128	81	63.3	92	71.9	2	1.5
Qantas	9	9	7	77.8	7	77.8	0	0.0
QantasLink	53	53	47	88.7	47	88.7	0	0.0
Virgin Australia	76	75	55	73.3	57	76.0	1	1.3
All Airlines	268	265	190	71.7	203	76.6	3	1.1
Kalgoorlie-Perth								
Qantas	7	6	4	66.7	4	66.7	1	14.3
QantasLink	64	64	61	95.3	57	89.1	0	0.0
Virgin Australia	37	36	35	97.2	34	94.4	1	2.7
Virgin Australia Regional Airlines	34	34	30	88.2	31	91.2	0	0.0
All Airlines	142	140	130	92.9	126	90.0	2	1.4
Karratha-Perth								
Qantas	14	14	14	100.0	14	100.0	0	0.0
QantasLink	179	175	159	90.9	164	93.7	4	2.2
Virgin Australia	1	1	1	100.0	1	100.0	0	0.0
Virgin Australia Regional Airlines	67	67	57	85.1	60	89.6	0	0.0
All Airlines	261	257	231	89.9	239	93.0	4	1.5
Launceston-Melbourne								
Jetstar	202	201	162	80.6	167	83.1	1	0.5
QantasLink	120	117	94	80.3	100	85.5	3	2.5
Virgin Australia	105	105	87	82.9	92	87.6	0	0.0
All Airlines	427	423	343	81.1	359	84.9	4	0.9
Launceston-Sydney								
Jetstar	91	91	60	65.9	61	67.0	0	0.0
Virgin Australia	33	32	29	90.6	26	81.3	1	3.0
All Airlines	124	123	89	72.4	87	70.7	1	0.8
Mackay-Brisbane								
Jetstar	31	31	29	93.5	29	93.5	0	0.0
QantasLink	120	119	116	97.5	114	95.8	1	0.8
Virgin Australia	141	141	135	95.7	134	95.0	0	0.0
All Airlines	292	291	280	96.2	277	95.2	1	0.3
Melbourne-Adelaide								
Jetstar	123	118	92	78.0	92	78.0	5	4.1
Qantas	252	251	223	88.8	228	90.8	1	0.4
Tigerair Australia	80	77	56	72.7	55	71.4	3	3.8
Virgin Australia	259	254	214	84.3	231	90.9	5	1.9
Virgin Australia Regional Airlines	11	11	7	63.6	7	63.6	0	0.0
All Airlines	725	711	592	83.3	613	86.2	14	1.9

	Sectors		Arrivals On Time		Departures On Time		Cancellations	
	Sched.	Flown	No.	%	No.	%	No.	%
Melbourne-Brisbane								
Jetstar	182	177	145	81.9	133	75.1	5	2.7
Qantas	398	393	339	86.3	349	88.8	5	1.3
QantasLink	9	9	8	88.9	9	100.0	0	0.0
Tigerair Australia	124	107	74	69.2	75	70.1	17	13.7
Virgin Australia	376	364	311	85.4	321	88.2	12	3.2
All Airlines	1 089	1 050	877	83.5	887	84.5	39	3.6
Melbourne-Cairns								
Jetstar	115	113	82	72.6	88	77.9	2	1.7
Qantas	39	39	34	87.2	33	84.6	0	0.0
Tigerair Australia	49	47	37	78.7	40	85.1	2	4.1
Virgin Australia	36	34	32	94.1	32	94.1	2	5.6
All Airlines	239	233	185	79.4	193	82.8	6	2.5
Melbourne-Canberra								
Qantas	201	199	171	85.9	174	87.4	2	1.0
QantasLink	33	31	30	96.8	28	90.3	2	6.1
Tigerair Australia	39	39	22	56.4	22	56.4	0	0.0
Virgin Australia	131	130	107	82.3	105	80.8	1	0.8
All Airlines	404	399	330	82.7	329	82.5	5	1.2
Melbourne-Darwin								
Jetstar	30	30	24	80.0	22	73.3	0	0.0
Qantas	27	27	25	92.6	24	88.9	0	0.0
Virgin Australia	31	31	26	83.9	27	87.1	0	0.0
All Airlines	88	88	75	85.2	73	83.0	0	0.0
Melbourne-Gold Coast								
Jetstar	240	233	175	75.1	181	77.7	7	2.9
Qantas	40	40	32	80.0	36	90.0	0	0.0
Tigerair Australia	97	94	59	62.8	69	73.4	3	3.1
Virgin Australia	217	217	171	78.8	185	85.3	0	0.0
All Airlines	594	584	437	74.8	471	80.7	10	1.7
Melbourne-Hobart								
Jetstar	245	242	193	79.8	190	78.5	3	1.2
Qantas	120	120	100	83.3	101	84.2	0	0.0
Tigerair Australia	52	50	32	64.0	32	64.0	2	3.8
Virgin Australia	152	148	124	83.8	127	85.8	4	2.6
All Airlines	569	560	449	80.2	450	80.4	9	1.6
Melbourne-Launceston								
Jetstar	201	200	166	83.0	163	81.5	1	0.5
QantasLink	121	118	96	81.4	98	83.1	3	2.5
Virgin Australia	104	104	91	87.5	89	85.6	0	0.0
All Airlines	426	422	353	83.6	350	82.9	4	0.9
Melbourne-Mildura								
QantasLink	86	85	73	85.9	71	83.5	1	1.2
Regional Express	48	48	33	68.8	34	70.8	0	0.0
Virgin Australia	31	31	28	90.3	28	90.3	0	0.0
All Airlines	165	164	134	81.7	133	81.1	1	0.6
Melbourne-Newcastle								
Jetstar	121	119	85	71.4	85	71.4	2	1.7
Virgin Australia	33	33	25	75.8	28	84.8	0	0.0
All Airlines	154	152	110	72.4	113	74.3	2	1.3

	<i>Sectors</i>		<i>Arrivals On Time</i>		<i>Departures On Time</i>		<i>Cancellations</i>	
	<i>Sched.</i>	<i>Flown</i>	<i>No.</i>	<i>%</i>	<i>No.</i>	<i>%</i>	<i>No.</i>	<i>%</i>
Melbourne-Perth								
Jetstar	62	60	53	88.3	51	85.0	2	3.2
Qantas	202	202	161	79.7	158	78.2	0	0.0
Tigerair Australia	61	58	44	75.9	43	74.1	3	4.9
Virgin Australia	157	157	127	80.9	119	75.8	0	0.0
All Airlines	482	477	385	80.7	371	77.8	5	1.0
Melbourne-Sunshine Coast								
Jetstar	86	86	75	87.2	73	84.9	0	0.0
Virgin Australia	76	76	68	89.5	65	85.5	0	0.0
All Airlines	162	162	143	88.3	138	85.2	0	0.0
Melbourne-Sydney								
Jetstar	461	435	289	66.4	302	69.4	26	5.6
Qantas	912	866	674	77.8	739	85.3	46	5.0
Tigerair Australia	286	238	157	66.0	172	72.3	48	16.8
Virgin Australia	686	663	531	80.1	580	87.5	23	3.4
All Airlines	2 345	2 202	1 651	75.0	1 793	81.4	143	6.1
Mildura-Melbourne								
QantasLink	86	85	73	85.9	73	85.9	1	1.2
Regional Express	48	47	37	78.7	38	80.9	1	2.1
Virgin Australia	31	31	26	83.9	28	90.3	0	0.0
All Airlines	165	163	136	83.4	139	85.3	2	1.2
Mount Isa-Brisbane								
Qantas	31	31	31	100.0	27	87.1	0	0.0
Virgin Australia	19	19	17	89.5	18	94.7	0	0.0
All Airlines	50	50	48	96.0	45	90.0	0	0.0
Newcastle-Brisbane								
Jetstar	92	92	70	76.1	77	83.7	0	0.0
QantasLink	84	82	78	95.1	76	92.7	2	2.4
Virgin Australia	69	69	65	94.2	65	94.2	0	0.0
All Airlines	245	243	213	87.7	218	89.7	2	0.8
Newcastle-Melbourne								
Jetstar	121	119	92	77.3	93	78.2	2	1.7
Virgin Australia	33	33	23	69.7	24	72.7	0	0.0
All Airlines	154	152	115	75.7	117	77.0	2	1.3
Newman-Perth								
Qantas	32	32	30	93.8	30	93.8	0	0.0
QantasLink	100	98	89	90.8	90	91.8	2	2.0
Virgin Australia	15	15	13	86.7	13	86.7	0	0.0
Virgin Australia Regional Airlines	28	27	25	92.6	26	96.3	1	3.6
All Airlines	175	172	157	91.3	159	92.4	3	1.7
Perth-Adelaide								
Jetstar	30	28	26	92.9	26	92.9	2	6.7
Qantas	105	105	98	93.3	96	91.4	0	0.0
Virgin Australia	33	33	32	97.0	32	97.0	0	0.0
Virgin Australia Regional Airlines	47	47	29	61.7	40	85.1	0	0.0
All Airlines	215	213	185	86.9	194	91.1	2	0.9
Perth-Brisbane								
Qantas	130	130	110	84.6	111	85.4	0	0.0
Virgin Australia	115	115	97	84.3	101	87.8	0	0.0
All Airlines	245	245	207	84.5	212	86.5	0	0.0

	Sectors		Arrivals On Time		Departures On Time		Cancellations	
	Sched.	Flown	No.	%	No.	%	No.	%
Perth-Broome								
QantasLink	84	83	73	88.0	73	88.0	1	1.2
Virgin Australia	1	1	1	100.0	1	100.0	0	0.0
Virgin Australia Regional Airlines	61	61	53	86.9	55	90.2	0	0.0
All Airlines	146	145	127	87.6	129	89.0	1	0.7
Perth-Darwin								
Qantas	31	31	29	93.5	28	90.3	0	0.0
Virgin Australia	23	23	21	91.3	23	100.0	0	0.0
Virgin Australia Regional Airlines	8	8	8	100.0	8	100.0	0	0.0
All Airlines	62	62	58	93.5	59	95.2	0	0.0
Perth-Geraldton								
QantasLink	42	42	41	97.6	40	95.2	0	0.0
Virgin Australia Regional Airlines	46	46	40	87.0	39	84.8	0	0.0
All Airlines	88	88	81	92.0	79	89.8	0	0.0
Perth-Kalgoorlie								
Qantas	7	6	5	83.3	5	83.3	1	14.3
QantasLink	64	64	56	87.5	60	93.8	0	0.0
Virgin Australia	37	37	35	94.6	36	97.3	0	0.0
Virgin Australia Regional Airlines	34	34	31	91.2	31	91.2	0	0.0
All Airlines	142	141	127	90.1	132	93.6	1	0.7
Perth-Karratha								
Qantas	14	14	13	92.9	14	100.0	0	0.0
QantasLink	182	182	162	89.0	164	90.1	0	0.0
Virgin Australia	1	1	1	100.0	1	100.0	0	0.0
Virgin Australia Regional Airlines	67	67	61	91.0	63	94.0	0	0.0
All Airlines	264	264	237	89.8	242	91.7	0	0.0
Perth-Melbourne								
Jetstar	62	59	45	76.3	44	74.6	3	4.8
Qantas	209	209	172	82.3	163	78.0	0	0.0
Tigerair Australia	61	58	48	82.8	45	77.6	3	4.9
Virgin Australia	155	155	135	87.1	135	87.1	0	0.0
All Airlines	487	481	400	83.2	387	80.5	6	1.2
Perth-Newman								
Qantas	32	32	31	96.9	31	96.9	0	0.0
QantasLink	100	100	89	89.0	95	95.0	0	0.0
Virgin Australia	15	15	14	93.3	15	100.0	0	0.0
Virgin Australia Regional Airlines	28	27	26	96.3	27	100.0	1	3.6
All Airlines	175	174	160	92.0	168	96.6	1	0.6
Perth-Port Hedland								
Qantas	46	46	43	93.5	43	93.5	0	0.0
QantasLink	86	85	80	94.1	79	92.9	1	1.2
Virgin Australia	25	25	24	96.0	24	96.0	0	0.0
Virgin Australia Regional Airlines	29	29	21	72.4	23	79.3	0	0.0
All Airlines	186	185	168	90.8	169	91.4	1	0.5
Perth-Sydney								
Jetstar	31	31	24	77.4	24	77.4	0	0.0
Qantas	209	208	167	80.3	176	84.6	1	0.5
Tigerair Australia	31	24	17	70.8	17	70.8	7	22.6
Virgin Australia	131	131	118	90.1	122	93.1	0	0.0
All Airlines	402	394	326	82.7	339	86.0	8	2.0

	<i>Sectors</i>		<i>Arrivals On Time</i>		<i>Departures On Time</i>		<i>Cancellations</i>	
	<i>Sched.</i>	<i>Flown</i>	<i>No.</i>	<i>%</i>	<i>No.</i>	<i>%</i>	<i>No.</i>	<i>%</i>
Port Hedland-Perth								
Qantas	46	46	44	95.7	43	93.5	0	0.0
QantasLink	86	82	67	81.7	73	89.0	4	4.7
Virgin Australia	25	25	24	96.0	22	88.0	0	0.0
Virgin Australia Regional Airlines	29	29	21	72.4	21	72.4	0	0.0
All Airlines	186	182	156	85.7	159	87.4	4	2.2
Port Lincoln-Adelaide								
QantasLink	110	107	98	91.6	98	91.6	3	2.7
Regional Express	185	185	174	94.1	173	93.5	0	0.0
All Airlines	295	292	272	93.2	271	92.8	3	1.0
Port Macquarie-Sydney								
QantasLink	98	98	83	84.7	85	86.7	0	0.0
Virgin Australia	55	55	38	69.1	38	69.1	0	0.0
All Airlines	153	153	121	79.1	123	80.4	0	0.0
Proserpine-Brisbane								
Jetstar	44	42	39	92.9	38	90.5	2	4.5
Virgin Australia	46	43	37	86.0	35	81.4	3	6.5
All Airlines	90	85	76	89.4	73	85.9	5	5.6
Proserpine-Sydney								
Jetstar	14	14	9	64.3	7	50.0	0	0.0
Tigerair Australia	22	20	13	65.0	11	55.0	2	9.1
All Airlines	36	34	22	64.7	18	52.9	2	5.6
Rockhampton-Brisbane								
QantasLink	174	174	157	90.2	155	89.1	0	0.0
Virgin Australia	140	140	134	95.7	135	96.4	0	0.0
All Airlines	314	314	291	92.7	290	92.4	0	0.0
Sunshine Coast-Melbourne								
Jetstar	87	87	67	77.0	66	75.9	0	0.0
Virgin Australia	76	76	63	82.9	62	81.6	0	0.0
All Airlines	163	163	130	79.8	128	78.5	0	0.0
Sunshine Coast-Sydney								
Jetstar	122	119	78	65.5	75	63.0	3	2.5
QantasLink	35	35	27	77.1	29	82.9	0	0.0
Virgin Australia	68	67	54	80.6	56	83.6	1	1.5
All Airlines	225	221	159	71.9	160	72.4	4	1.8
Sydney-Adelaide								
Jetstar	139	132	114	86.4	107	81.1	7	5.0
Qantas	216	213	187	87.8	183	85.9	3	1.4
QantasLink	30	29	29	100.0	28	96.6	1	3.3
Tigerair Australia	32	31	19	61.3	18	58.1	1	3.1
Virgin Australia	159	159	144	90.6	144	90.6	0	0.0
All Airlines	576	564	493	87.4	480	85.1	12	2.1
Sydney-Albury								
QantasLink	83	82	77	93.9	76	92.7	1	1.2
Regional Express	52	50	43	86.0	47	94.0	2	3.8
Virgin Australia	60	60	48	80.0	48	80.0	0	0.0
All Airlines	195	192	168	87.5	171	89.1	3	1.5
Sydney-Armidale								
QantasLink	109	108	98	90.7	94	87.0	1	0.9
Regional Express	40	40	36	90.0	37	92.5	0	0.0
All Airlines	149	148	134	90.5	131	88.5	1	0.7

	<i>Sectors</i>		<i>Arrivals On Time</i>		<i>Departures On Time</i>		<i>Cancellations</i>	
	<i>Sched.</i>	<i>Flown</i>	<i>No.</i>	<i>%</i>	<i>No.</i>	<i>%</i>	<i>No.</i>	<i>%</i>
Sydney-Ayers Rock								
Jetstar	27	27	26	96.3	22	81.5	0	0.0
Virgin Australia	31	31	29	93.5	29	93.5	0	0.0
All Airlines	58	58	55	94.8	51	87.9	0	0.0
Sydney-Ballina								
Jetstar	104	103	82	79.6	80	77.7	1	1.0
Regional Express	4	4	1	25.0	1	25.0	0	0.0
Virgin Australia	46	46	37	80.4	40	87.0	0	0.0
All Airlines	154	153	120	78.4	121	79.1	1	0.6
Sydney-Brisbane								
Jetstar	187	175	132	75.4	125	71.4	12	6.4
Qantas	499	494	441	89.3	434	87.9	5	1.0
QantasLink	12	12	10	83.3	11	91.7	0	0.0
Tigerair Australia	118	107	80	74.8	83	77.6	11	9.3
Virgin Australia	518	501	405	80.8	398	79.4	17	3.3
All Airlines	1 334	1 289	1 068	82.9	1 051	81.5	45	3.4
Sydney-Cairns								
Jetstar	125	121	103	85.1	94	77.7	4	3.2
Qantas	63	63	51	81.0	53	84.1	0	0.0
Tigerair Australia	35	33	24	72.7	26	78.8	2	5.7
Virgin Australia	97	97	73	75.3	72	74.2	0	0.0
All Airlines	320	314	251	79.9	245	78.0	6	1.9
Sydney-Canberra								
QantasLink	302	299	263	88.0	266	89.0	3	1.0
Virgin Australia	171	167	134	80.2	128	76.6	4	2.3
All Airlines	473	466	397	85.2	394	84.5	7	1.5
Sydney-Coffs Harbour								
QantasLink	127	126	108	85.7	106	84.1	1	0.8
Tigerair Australia	27	27	20	74.1	20	74.1	0	0.0
Virgin Australia	31	31	30	96.8	30	96.8	0	0.0
All Airlines	185	184	158	85.9	156	84.8	1	0.5
Sydney-Darwin								
Jetstar	31	31	25	80.6	23	74.2	0	0.0
Qantas	32	32	29	90.6	22	68.8	0	0.0
Virgin Australia	30	30	27	90.0	25	83.3	0	0.0
All Airlines	93	93	81	87.1	70	75.3	0	0.0
Sydney-Dubbo								
QantasLink	100	100	78	78.0	83	83.0	0	0.0
Regional Express	87	86	76	88.4	74	86.0	1	1.1
All Airlines	187	186	154	82.8	157	84.4	1	0.5
Sydney-Gold Coast								
Jetstar	342	324	245	75.6	239	73.8	18	5.3
Qantas	109	109	95	87.2	92	84.4	0	0.0
QantasLink	8	8	8	100.0	8	100.0	0	0.0
Tigerair Australia	105	96	64	66.7	66	68.8	9	8.6
Virgin Australia	269	267	217	81.3	221	82.8	2	0.7
All Airlines	833	804	629	78.2	626	77.9	29	3.5

	<i>Sectors</i>		<i>Arrivals On Time</i>		<i>Departures On Time</i>		<i>Cancellations</i>	
	<i>Sched.</i>	<i>Flown</i>	<i>No.</i>	<i>%</i>	<i>No.</i>	<i>%</i>	<i>No.</i>	<i>%</i>
Sydney-Hamilton Island								
Jetstar	31	30	22	73.3	23	76.7	1	3.2
Qantas	15	15	13	86.7	14	93.3	0	0.0
QantasLink	16	16	12	75.0	14	87.5	0	0.0
Virgin Australia	30	29	28	96.6	27	93.1	1	3.3
All Airlines	92	90	75	83.3	78	86.7	2	2.2
Sydney-Hobart								
Jetstar	130	128	105	82.0	97	75.8	2	1.5
Qantas	9	9	8	88.9	8	88.9	0	0.0
QantasLink	53	53	42	79.2	43	81.1	0	0.0
Virgin Australia	76	75	62	82.7	65	86.7	1	1.3
All Airlines	268	265	217	81.9	213	80.4	3	1.1
Sydney-Launceston								
Jetstar	90	90	74	82.2	68	75.6	0	0.0
Virgin Australia	33	32	28	87.5	26	81.3	1	3.0
All Airlines	123	122	102	83.6	94	77.0	1	0.8
Sydney-Melbourne								
Jetstar	462	431	303	70.3	268	62.2	31	6.7
Qantas	913	868	710	81.8	725	83.5	45	4.9
Tigerair Australia	286	238	163	68.5	164	68.9	48	16.8
Virgin Australia	680	657	531	80.8	550	83.7	23	3.4
All Airlines	2 341	2 194	1 707	77.8	1 707	77.8	147	6.3
Sydney-Perth								
Jetstar	31	31	28	90.3	21	67.7	0	0.0
Qantas	208	208	178	85.6	150	72.1	0	0.0
Tigerair Australia	31	24	19	79.2	17	70.8	7	22.6
Virgin Australia	131	131	109	83.2	91	69.5	0	0.0
All Airlines	401	394	334	84.8	279	70.8	7	1.7
Sydney-Port Macquarie								
QantasLink	99	97	85	87.6	86	88.7	2	2.0
Virgin Australia	55	55	41	74.5	42	76.4	0	0.0
All Airlines	154	152	126	82.9	128	84.2	2	1.3
Sydney-Proserpine								
Jetstar	14	14	9	64.3	6	42.9	0	0.0
Tigerair Australia	22	20	14	70.0	16	80.0	2	9.1
All Airlines	36	34	23	67.6	22	64.7	2	5.6
Sydney-Sunshine Coast								
Jetstar	122	120	96	80.0	92	76.7	2	1.6
QantasLink	35	35	31	88.6	29	82.9	0	0.0
Virgin Australia	68	67	58	86.6	56	83.6	1	1.5
All Airlines	225	222	185	83.3	177	79.7	3	1.3
Sydney-Tamworth								
QantasLink	118	118	101	85.6	104	88.1	0	0.0
Virgin Australia	59	58	47	81.0	48	82.8	1	1.7
All Airlines	177	176	148	84.1	152	86.4	1	0.6
Sydney-Townsville								
Jetstar	30	30	19	63.3	15	50.0	0	0.0
Virgin Australia	24	24	24	100.0	22	91.7	0	0.0
All Airlines	54	54	43	79.6	37	68.5	0	0.0

	<i>Sectors</i>		<i>Arrivals On Time</i>		<i>Departures On Time</i>		<i>Cancellations</i>	
	<i>Sched.</i>	<i>Flown</i>	<i>No.</i>	<i>%</i>	<i>No.</i>	<i>%</i>	<i>No.</i>	<i>%</i>
Sydney-Wagga Wagga								
QantasLink	87	87	75	86.2	71	81.6	0	0.0
Regional Express	53	53	45	84.9	44	83.0	0	0.0
All Airlines	140	140	120	85.7	115	82.1	0	0.0
Tamworth-Sydney								
QantasLink	113	113	94	83.2	100	88.5	0	0.0
Virgin Australia	58	57	46	80.7	50	87.7	1	1.7
All Airlines	171	170	140	82.4	150	88.2	1	0.6
Townsville-Brisbane								
Jetstar	48	48	45	93.8	44	91.7	0	0.0
Qantas	35	35	32	91.4	33	94.3	0	0.0
QantasLink	107	107	102	95.3	101	94.4	0	0.0
Virgin Australia	141	140	137	97.9	134	95.7	1	0.7
All Airlines	331	330	316	95.8	312	94.5	1	0.3
Townsville-Cairns								
QantasLink	136	136	127	93.4	127	93.4	0	0.0
Regional Express	6	6	4	66.7	4	66.7	0	0.0
All Airlines	142	142	131	92.3	131	92.3	0	0.0
Townsville-Sydney								
Jetstar	30	30	20	66.7	18	60.0	0	0.0
Virgin Australia	24	24	23	95.8	21	87.5	0	0.0
All Airlines	54	54	43	79.6	39	72.2	0	0.0
Wagga Wagga-Sydney								
QantasLink	86	86	66	76.7	67	77.9	0	0.0
Regional Express	56	55	44	80.0	52	94.5	1	1.8
All Airlines	142	141	110	78.0	119	84.4	1	0.7

Airports

On time performance is reported for all routes where the passenger load averages over 8000 passengers per month, and where two or more airlines operate in competition. The following data reports by airport against flights operated on those routes only. This month, 8 major city airports and 32 regional city airports are covered.

Airport	Arrivals			Departures		
	Sectors	On Time		Sectors	On Time	
	Flown	No.	%	Flown	No.	%
Adelaide						
Jetstar	347	295	85.0	346	288	83.2
Qantas	685	620	90.5	688	630	91.6
QantasLink	198	185	93.4	197	188	95.4
Regional Express	185	174	94.1	186	177	95.2
Tigerair Australia	138	101	73.2	138	95	68.8
Virgin Australia	650	580	89.2	651	596	91.6
Virgin Australia Regional Airlines	58	36	62.1	58	38	65.5
All Airlines	2 261	1 991	88.1	2 264	2 012	88.9
Relates to services to and from Alice Springs, Brisbane, Canberra, Gold Coast, Melbourne, Perth, Port Lincoln and Sydney.						
Albury						
QantasLink	82	77	93.9	83	77	92.8
Regional Express	50	43	86.0	47	43	91.5
Virgin Australia	60	48	80.0	60	47	78.3
All Airlines	192	168	87.5	190	167	87.9
Relates to services to and from Sydney only.						
Alice Springs						
Qantas	31	30	96.8	31	30	96.8
QantasLink	27	26	96.3	27	27	100.0
Virgin Australia	45	38	84.4	45	39	86.7
All Airlines	103	94	91.3	103	96	93.2
Relates to services to and from Adelaide and Darwin.						
Armidale						
QantasLink	108	98	90.7	109	92	84.4
Regional Express	40	36	90.0	39	36	92.3
All Airlines	148	134	90.5	148	128	86.5
Relates to services to and from Sydney only.						
Ayers Rock						
Jetstar	27	26	96.3	27	17	63.0
Virgin Australia	31	29	93.5	31	25	80.6
All Airlines	58	55	94.8	58	42	72.4
Relates to services to and from Sydney only.						
Ballina						
Jetstar	103	82	79.6	102	68	66.7
Regional Express	4	1	25.0	3	2	66.7
Virgin Australia	46	37	80.4	46	37	80.4
All Airlines	153	120	78.4	151	107	70.9
Relates to services to and from Sydney only.						

Airport	Arrivals			Departures		
	Sectors	On Time		Sectors	On Time	
	Flown	No.	%	Flown	No.	%
Brisbane						
Jetstar	780	657	84.2	784	654	83.4
Qantas	1 223	1 088	89.0	1 222	1 131	92.6
QantasLink	1 160	1 079	93.0	1 171	1 093	93.3
Tigerair Australia	310	230	74.2	310	223	71.9
Virgin Australia	2 109	1 882	89.2	2 113	1 852	87.6
All Airlines	5 582	4 936	88.4	5 600	4 953	88.4

Relates to services to and from Adelaide, Bundaberg, Cairns, Canberra, Darwin, Emerald, Gladstone, Hamilton Island, Hobart, Mackay, Melbourne, Mount Isa, Newcastle, Perth, Proserpine, Rockhampton, Sydney and Townsville.

Broome

QantasLink	83	73	88.0	82	73	89.0
Virgin Australia	1	1	100.0	1	1	100.0
Virgin Australia Regional Airlines	61	53	86.9	61	53	86.9
All Airlines	145	127	87.6	144	127	88.2

Relates to services to and from Perth only.

Bundaberg

QantasLink	108	104	96.3	108	105	97.2
Virgin Australia	31	28	90.3	31	29	93.5
All Airlines	139	132	95.0	139	134	96.4

Relates to services to and from Brisbane only.

Cairns

Jetstar	349	286	81.9	345	266	77.1
Qantas	147	128	87.1	147	123	83.7
QantasLink	216	203	94.0	215	197	91.6
Regional Express	6	4	66.7	6	4	66.7
Tigerair Australia	111	85	76.6	111	78	70.3
Virgin Australia	266	229	86.1	265	233	87.9
All Airlines	1 095	935	85.4	1 089	901	82.7

Relates to services to and from Brisbane, Melbourne, Sydney and Townsville.

Canberra

Qantas	230	198	86.1	226	207	91.6
QantasLink	488	434	88.9	483	442	91.5
Tigerair Australia	57	35	61.4	57	28	49.1
Virgin Australia	415	350	84.3	415	342	82.4
All Airlines	1 190	1 017	85.5	1 181	1 019	86.3

Relates to services to and from Adelaide, Brisbane, Melbourne and Sydney.

Coffs Harbour

QantasLink	126	108	85.7	125	107	85.6
Tigerair Australia	27	20	74.1	27	22	81.5
Virgin Australia	31	30	96.8	31	30	96.8
All Airlines	184	158	85.9	183	159	86.9

Relates to services to and from Sydney only.

Airport	Arrivals			Departures		
	Sectors	On Time		Sectors	On Time	
	Flown	No.	%	Flown	No.	%
Darwin						
Jetstar	90	78	86.7	90	76	84.4
Qantas	121	114	94.2	120	110	91.7
QantasLink	27	26	96.3	27	26	96.3
Tigerair Australia	17	15	88.2	17	16	94.1
Virgin Australia	139	122	87.8	138	130	94.2
Virgin Australia Regional Airlines	8	8	100.0	8	8	100.0
All Airlines	402	363	90.3	400	366	91.5
Relates to services to and from Alice Springs, Brisbane, Melbourne, Perth and Sydney.						
Dubbo						
QantasLink	100	78	78.0	99	79	79.8
Regional Express	86	76	88.4	82	74	90.2
All Airlines	186	154	82.8	181	153	84.5
Relates to services to and from Sydney only.						
Emerald						
QantasLink	109	105	96.3	108	98	90.7
Virgin Australia	53	51	96.2	53	52	98.1
All Airlines	162	156	96.3	161	150	93.2
Relates to services to and from Brisbane only.						
Geraldton						
QantasLink	42	41	97.6	41	40	97.6
Virgin Australia Regional Airlines	46	40	87.0	45	38	84.4
All Airlines	88	81	92.0	86	78	90.7
Relates to services to and from Perth only.						
Gladstone						
QantasLink	124	111	89.5	123	113	91.9
Virgin Australia	50	50	100.0	50	50	100.0
All Airlines	174	161	92.5	173	163	94.2
Relates to services to and from Brisbane only.						
Gold Coast						
Jetstar	596	456	76.5	596	440	73.8
Qantas	149	127	85.2	149	98	65.8
QantasLink	8	8	100.0	8	8	100.0
Tigerair Australia	190	123	64.7	190	109	57.4
Virgin Australia	523	423	80.9	521	381	73.1
All Airlines	1 466	1 137	77.6	1 464	1 036	70.8
Relates to services to and from Adelaide, Melbourne and Sydney.						
Hamilton Island						
Jetstar	30	22	73.3	30	16	53.3
Qantas	15	13	86.7	15	15	100.0
QantasLink	45	37	82.2	45	38	84.4
Virgin Australia	58	56	96.6	58	52	89.7
All Airlines	148	128	86.5	148	121	81.8
Relates to services to and from Brisbane and Sydney.						

Airport	Arrivals			Departures		
	Sectors Flown	On Time		Sectors Flown	On Time	
		No.	%		No.	%
Hobart						
Jetstar	414	338	81.6	413	299	72.4
Qantas	131	109	83.2	131	103	78.6
QantasLink	53	42	79.2	53	47	88.7
Tigerair Australia	50	32	64.0	50	26	52.0
Virgin Australia	266	227	85.3	266	210	78.9
All Airlines	914	748	81.8	913	685	75.0
Relates to services to and from Brisbane, Melbourne and Sydney.						
Kalgoorlie						
Qantas	6	5	83.3	6	4	66.7
QantasLink	64	56	87.5	64	57	89.1
Virgin Australia	37	35	94.6	36	34	94.4
Virgin Australia Regional Airlines	34	31	91.2	34	31	91.2
All Airlines	141	127	90.1	140	126	90.0
Relates to services to and from Perth only.						
Karratha						
Qantas	14	13	92.9	14	14	100.0
QantasLink	182	162	89.0	175	164	93.7
Virgin Australia	1	1	100.0	1	1	100.0
Virgin Australia Regional Airlines	67	61	91.0	67	60	89.6
All Airlines	264	237	89.8	257	239	93.0
Relates to services to and from Perth only.						
Launceston						
Jetstar	290	240	82.8	292	228	78.1
QantasLink	118	96	81.4	117	100	85.5
Virgin Australia	136	119	87.5	137	118	86.1
All Airlines	544	455	83.6	546	446	81.7
Relates to services to and from Melbourne and Sydney.						
Mackay						
Jetstar	31	29	93.5	31	29	93.5
QantasLink	128	119	93.0	119	114	95.8
Virgin Australia	141	130	92.2	141	134	95.0
All Airlines	300	278	92.7	291	277	95.2
Relates to services to and from Brisbane only.						
Melbourne						
Jetstar	1 809	1 389	76.8	1 813	1 380	76.1
Qantas	2 138	1 793	83.9	2 137	1 842	86.2
QantasLink	242	204	84.3	243	206	84.8
Regional Express	47	37	78.7	48	34	70.8
Tigerair Australia	710	491	69.2	710	508	71.5
Virgin Australia	2 243	1 842	82.1	2 242	1 937	86.4
Virgin Australia Regional Airlines	11	9	81.8	11	7	63.6
All Airlines	7 200	5 765	80.1	7 204	5 914	82.1
Relates to services to and from Adelaide, Brisbane, Cairns, Canberra, Darwin, Gold Coast, Hobart, Launceston, Mildura, Newcastle, Perth, Sunshine Coast and Sydney.						
Mildura						
QantasLink	85	73	85.9	85	73	85.9
Regional Express	48	33	68.8	47	38	80.9
Virgin Australia	31	28	90.3	31	28	90.3
All Airlines	164	134	81.7	163	139	85.3
Relates to services to and from Melbourne only.						

Airport	Arrivals			Departures		
	Sectors Flown	On Time		Sectors Flown	On Time	
		No.	%		No.	%
Mount Isa						
Qantas	31	31	100.0	31	27	87.1
Virgin Australia	19	19	100.0	19	18	94.7
All Airlines	50	50	100.0	50	45	90.0
Relates to services to and from Brisbane only.						
Newcastle						
Jetstar	211	161	76.3	211	170	80.6
QantasLink	82	77	93.9	82	76	92.7
Virgin Australia	103	89	86.4	102	89	87.3
All Airlines	396	327	82.6	395	335	84.8
Relates to services to and from Brisbane and Melbourne.						
Newman						
Qantas	32	31	96.9	32	30	93.8
QantasLink	100	89	89.0	98	90	91.8
Virgin Australia	15	14	93.3	15	13	86.7
Virgin Australia Regional Airlines	27	26	96.3	27	26	96.3
All Airlines	174	160	92.0	172	159	92.4
Relates to services to and from Perth only.						
Perth						
Jetstar	120	108	90.0	118	94	79.7
Qantas	778	692	88.9	781	667	85.4
QantasLink	542	493	91.0	556	511	91.9
Tigerair Australia	82	63	76.8	82	62	75.6
Virgin Australia	535	466	87.1	536	490	91.4
Virgin Australia Regional Airlines	318	265	83.3	319	286	89.7
All Airlines	2 375	2 087	87.9	2 392	2 110	88.2
Relates to services to and from Adelaide, Brisbane, Broome, Darwin, Geraldton, Kalgoorlie, Karratha, Melbourne, Newman, Port Hedland and Sydney.						
Port Hedland						
Qantas	46	43	93.5	46	43	93.5
QantasLink	85	80	94.1	82	73	89.0
Virgin Australia	25	24	96.0	25	22	88.0
Virgin Australia Regional Airlines	29	21	72.4	29	21	72.4
All Airlines	185	168	90.8	182	159	87.4
Relates to services to and from Perth only.						
Port Lincoln						
QantasLink	107	102	95.3	107	98	91.6
Regional Express	186	176	94.6	185	173	93.5
All Airlines	293	278	94.9	292	271	92.8
Relates to services to and from Adelaide only.						
Port Macquarie						
QantasLink	97	85	87.6	98	85	86.7
Virgin Australia	55	41	74.5	55	38	69.1
All Airlines	152	126	82.9	153	123	80.4
Relates to services to and from Sydney only.						

Airport	Arrivals			Departures		
	Sectors Flown	On Time		Sectors Flown	On Time	
		No.	%		No.	%
Proserpine						
Jetstar	57	48	84.2	56	45	80.4
Tigerair Australia	20	14	70.0	20	11	55.0
Virgin Australia	43	33	76.7	43	35	81.4
All Airlines	120	95	79.2	119	91	76.5
Relates to services to and from Brisbane and Sydney.						
Rockhampton						
QantasLink	170	151	88.8	174	155	89.1
Virgin Australia	140	131	93.6	140	135	96.4
All Airlines	310	282	91.0	314	290	92.4
Relates to services to and from Brisbane only.						
Sunshine Coast						
Jetstar	206	171	83.0	206	141	68.4
QantasLink	35	31	88.6	35	29	82.9
Virgin Australia	143	126	88.1	143	118	82.5
All Airlines	384	328	85.4	384	288	75.0
Relates to services to and from Melbourne and Sydney.						
Sydney						
Jetstar	1 787	1 292	72.3	1 787	1 280	71.6
Qantas	2 010	1 662	82.7	2 011	1 681	83.6
QantasLink	1 161	973	83.8	1 170	1 019	87.1
Regional Express	226	184	81.4	233	203	87.1
Tigerair Australia	576	380	66.0	576	410	71.2
Virgin Australia	2 515	2 079	82.7	2 517	2 062	81.9
All Airlines	8 275	6 570	79.4	8 294	6 655	80.2
Relates to services to and from Adelaide, Albury, Armidale, Ayers Rock, Ballina, Brisbane, Cairns, Canberra, Coffs Harbour, Darwin, Dubbo, Gold Coast, Hamilton Island, Hobart, Launceston, Melbourne, Perth, Port Macquarie, Proserpine, Sunshine Coast, Tamworth, Townsville and Wagga Wagga.						
Tamworth						
QantasLink	118	101	85.6	113	100	88.5
Virgin Australia	58	47	81.0	57	50	87.7
All Airlines	176	148	84.1	170	150	88.2
Relates to services to and from Sydney only.						
Townsville						
Jetstar	78	63	80.8	78	62	79.5
Qantas	35	33	94.3	35	33	94.3
QantasLink	244	228	93.4	243	228	93.8
Regional Express	6	4	66.7	6	4	66.7
Virgin Australia	165	148	89.7	164	155	94.5
All Airlines	528	476	90.2	526	482	91.6
Relates to services to and from Brisbane, Cairns and Sydney.						
Wagga Wagga						
QantasLink	87	75	86.2	86	67	77.9
Regional Express	53	45	84.9	55	52	94.5
All Airlines	140	120	85.7	141	119	84.4
Relates to services to and from Sydney only.						

Definitions

On time arrival	A flight arrival is counted as "on time" if it arrived at the gate before 15 minutes after the scheduled arrival time shown in the carriers' schedule. Neither diverted nor cancelled flights count as on time.
On time departure	A flight departure is counted as "on time" if it departs the gate before 15 minutes after the scheduled departure time shown in the carriers' schedule.
Cancellation	A flight removed from service within 7 days of scheduled departure is regarded as a cancellation.
On time departure percentage	The percentage of on time departures is measured against the number of departures <i>operated</i> on any particular sector.
On time arrival percentage	The percentage of on time arrivals is measured against the number of arrivals <i>operated</i> on any particular sector.
Cancellation percentage	The percentage of cancellations is measured against the number of services <i>scheduled</i> on any particular sector.
