



Australian Government

Department of Infrastructure, Transport, Cities and Regional Development

Bureau of Infrastructure, Transport and Regional Economics

STATISTICAL REPORT



Aviation

Domestic airline on time performance
November 2019

© Commonwealth of Australia 2019

ISSN: 1832-0759

Ownership of intellectual property rights in this publication

Unless otherwise noted, copyright (and any other intellectual property rights, if any) in this publication is owned by the Commonwealth of Australia (referred to below as the Commonwealth).

Disclaimer

The material contained in this publication is made available on the understanding that the Commonwealth is not providing professional advice, and that users exercise their own skill and care with respect to its use, and seek independent advice if necessary.

The Commonwealth makes no representations or warranties as to the contents or accuracy of the information contained in this publication. To the extent permitted by law, the Commonwealth disclaims liability to any person or organisation in respect of anything done, or omitted to be done, in reliance upon information contained in this publication.

Creative Commons licence

With the exception of (a) the Coat of Arms; and (b) the Department of Infrastructure, Transport, Cities and Regional Development's photos and graphics, copyright in this publication is licensed under a Creative Commons Attribution 3.0 Australia Licence.

Creative Commons Attribution 3.0 Australia Licence is a standard form licence agreement that allows you to copy, communicate and adapt this publication provided that you attribute the work to the Commonwealth and abide by the other licence terms. A summary of the licence terms is available from <http://creativecommons.org/licenses/by/3.0/au/deed.en>. The full licence terms are available from <http://creativecommons.org/licenses/by/3.0/au/legalcode>.

Use of the Coat of Arms

The Department of the Prime Minister and Cabinet sets the terms under which the Coat of Arms is used. Please refer to the Department's Commonwealth Coat of Arms and Government branding web page <http://www.dpmc.gov.au/guidelines/index.cfm#brand> and, in particular, the Guidelines on the use of the Commonwealth Coat of Arms publication.

An appropriate citation for this report is:

Bureau of Infrastructure, Transport and Regional Economics (BITRE), 2019, Domestic airline on time performance, Statistical Report, BITRE, Canberra ACT.

Contact us

This publication is available in PDF format. All other rights are reserved, including in relation to any Departmental logos or trade marks which may exist. For enquiries regarding the licence and any use of this publication, please contact:

Bureau of Infrastructure, Transport and Regional Economics (BITRE)
Department of Infrastructure, Transport, Cities and Regional Development
GPO Box 501, Canberra ACT 2601, Australia
Telephone: (international) +61 2 6274 7210
Fax: (international) +61 2 6274 6855
Email: bitre@infrastructure.gov.au
Website: www.bitre.gov.au

Inquiries

Should you require additional information about the statistics contained in this publication:

Telephone (02) 6274 7790 or Facsimile (02) 6274 7727

Electronic mail: AVSTATS@infrastructure.gov.au

Web site: <http://www.bitre.gov.au/statistics/aviation/otphome.aspx>

Foreword

The Bureau of Infrastructure, Transport and Regional Economics (BITRE) monitors the punctuality and reliability of major domestic airlines operating between Australian airports. The purpose of this is to allow for evaluation of overall industry and individual airline performance, so that consumers of air travel can make informed decisions.

The following domestic airlines currently report this information monthly to the BITRE: Jetstar, Qantas, QantasLink, Regional Express, Tigerair Australia, Virgin Australia and Virgin Australia Regional Airlines. Data has been gathered since November 2003, although some airlines commenced reporting at a later date, including Jetstar which first reported in May 2004, MacAir in July 2005, Tigerair Australia in April 2008 and Virgin Australia Regional Airlines in May 2013. MacAir ceased operations in February 2009 and data was not received for December 2008 onwards. Virgin Blue was rebranded as Virgin Australia in May 2011 and Tiger Airways was rebranded as Tigerair Australia in July 2013 and time series data in Microsoft Excel spreadsheet format on the BITRE website have been revised to reflect these changes. Services operated by Skywest on behalf of Virgin Australia using ATR/F100 aircraft commenced in November 2011 and were shown separately as Virgin Australia – ATR/F100 Operations. Virgin Australia Regional Airlines commenced operations in May 2013. It was formed after the acquisition of Skywest by Virgin Australia and represented a combination of operations previously reported under Skywest and Virgin Australia – ATR/F100 Operations. In January 2016, Virgin Australia transferred their ATR fleet from Virgin Australia Regional Airlines to Virgin Australia.

Information presented in this report is for Australian domestic routes for which the passenger load averaged 8 000 or more passengers per month over the previous six months and where two or more airlines operated in competition on those routes. There were 64 routes that met this definition in November 2019. Over time, routes which meet these criteria change as airline networks and traffic levels vary.

Participating airlines report their overall monthly network performance where this is possible.

Total industry figures encompass all services operated by reporting airlines only. These airlines collectively carried over 95 per cent of total domestic passengers (regular public transport only) in 2018.

The method of capturing on time performance varies between airlines utilising different recording systems. Jetstar and Qantas jet aircraft use Aircraft Communication Addressing and Reporting System (ACARS) to electronically measure on time performance. Regional Express, Tigerair Australia, Virgin Australia, Virgin Australia Regional Airlines and the Qantas non-jet fleet record on time performance manually using records from pilots, gate agents and/or ground crews.

After initial data is collected, aggregate reports are audited internally by participating airlines prior to publication.

Reports and detailed time series data in Microsoft Excel spreadsheet format are available from the BITRE website at: <http://www.bitre.gov.au/statistics/aviation/otphome.aspx>.

Contents

	Page
Industry performance	1
Individual routes	10
Airports.....	24
Definitions	30

Industry performance

For November 2019, on time performance over all routes operated by participating airlines (Jetstar, Qantas, QantasLink, Regional Express, Tigerair Australia, Virgin Australia and Virgin Australia Regional Airlines) averaged 74.6 per cent for on time arrivals and 77.0 per cent for on time departures. Cancellations represented 2.2 per cent of all scheduled flights. The equivalent figures for November 2018 were 74.9 per cent for on time arrivals, 76.4 per cent for on time departures and 2.8 per cent for cancellations.

This month's on time arrivals figure was lower than the long term average performance for all routes (82.3 per cent) and the on time departures figure was also lower than the long term average (83.6 per cent). The rate of cancellations was higher than the long term average of 1.5 per cent.

Virgin Australia achieved the highest on time arrivals among the major domestic airlines at 74.3 per cent followed by Qantas at 71.0 per cent, Jetstar at 70.7 per cent and Tigerair Australia at 65.6 per cent. Of the regional airlines, Virgin Australia Regional Airlines recorded 80.3 per cent for on time arrivals, followed by Regional Express at 79.4 per cent and QantasLink at 79.2 per cent. The Qantas network (Qantas and QantasLink combined operations) recorded 75.4 per cent for on time arrivals while the Virgin Australia network (Virgin Australia and Virgin Australia Regional Airlines combined operations) recorded 74.7 per cent.

Virgin Australia also achieved the highest level of on time departures among the major domestic airlines for November 2019 at 78.3 per cent, followed by Qantas at 74.5 per cent, Jetstar at 70.5 per cent and Tigerair Australia at 69.1 per cent. Of the regional airlines, Regional Express recorded 82.8 per cent for on time departures, followed by Virgin Australia Regional Airlines at 82.1 per cent and QantasLink at 79.9 per cent. The Qantas network recorded 77.4 per cent for on time departures while the Virgin Australia network recorded 78.6 per cent.

Qantas recorded the highest percentage of cancellations (3.2 per cent) during the month, followed by Jetstar (2.8 per cent), Tigerair Australia (2.4 per cent), Virgin Australia (2.2 per cent), QantasLink (2.0 per cent), Virgin Australia Regional Airlines (1.0 per cent) and Regional Express (0.9 per cent).

Airlines' on time performance varies across the routes they serve. Individual route data by specific airline for 64 routes are shown on pages 10-23.

Of the 64 routes which met the criteria for on time performance reporting in November 2019, the Brisbane-Hobart route had the highest percentage of on time arrivals (95.7 per cent) and the Adelaide-Port Lincoln route had the highest percentage of on time departures (95.5 per cent). The Sydney-Darwin route had the lowest percentage of on time arrivals (51.3 per cent) and the Darwin-Sydney route had the lowest percentage of on time departures (50.6 per cent).

Cancellations were highest on the Sydney-Port Macquarie route at 12.2 per cent, followed by the Port Macquarie-Sydney route at 11.8 per cent, the Coffs Harbour-Sydney route at 10.7 per cent, the Sydney-Coffs Harbour route at 9.4 per cent and the Sydney-Melbourne route at 7.1 per cent.

Port Lincoln Airport recorded the highest percentage of on time arrivals (93.2 per cent) and the highest percentage of on time departures (92.8 per cent). Armidale Airport recorded the lowest percentage of on time arrivals (58.8 per cent) and the lowest percentage of on time departures (58.4 per cent). These figures only refer to reported routes and do not cover all flights at these airports.

Table 1 On time performance for November 2019 — Total Industry

	<i>Sectors</i>		<i>Arrivals On Time</i>		<i>Departures On Time</i>		<i>Cancellations</i>	
	<i>Scheduled</i>	<i>Flown</i>	<i>No.</i>	<i>%</i>	<i>No.</i>	<i>%</i>	<i>No.</i>	<i>%</i>
Jetstar	6 722	6 535	4 619	70.7	4 610	70.5	187	2.8
Qantas	9 069	8 783	6 238	71.0	6 546	74.5	286	3.2
QantasLink	10 326	10 124	8 014	79.2	8 088	79.9	202	2.0
Regional Express	6 191	6 136	4 872	79.4	5 083	82.8	55	0.9
Tigerair Australia	2 295	2 240	1 469	65.6	1 548	69.1	55	2.4
Virgin Australia	11 426	11 179	8 306	74.3	8 756	78.3	247	2.2
Virgin Australia Regional Airlines	763	755	606	80.3	620	82.1	8	1.0
All Airlines	46 792	45 752	34 124	74.6	35 251	77.0	1 040	2.2
Qantas - all QF designated services	19 395	18 907	14 252	75.4	14 634	77.4	488	2.5
Virgin Australia - all VA designated services	12 189	11 934	8 912	74.7	9 376	78.6	255	2.1

Total airline network data (including routes not shown in this report).

Airlines' on time performance varies across the routes they serve. Individual route data by specific airline for 64 routes are shown on pages 10-23.

Table 2 Top ten routes for on time performance for November 2019 (participating airlines only)

<i>Arrivals</i>		<i>Departures</i>	
<i>Route</i>	<i>On Time (%)</i>	<i>Route</i>	<i>On Time (%)</i>
Brisbane-Hobart	95.7	Adelaide-Port Lincoln	95.5
Perth-Darwin	93.3	Perth-Darwin	95.0
Adelaide-Port Lincoln	93.2	Brisbane-Proserpine	93.1
Port Lincoln-Adelaide	93.2	Perth-Kalgoorlie	93.1
Townsville-Cairns	92.4	Port Lincoln-Adelaide	92.8
Perth-Port Hedland	91.4	Brisbane-Hobart	91.4
Perth-Kalgoorlie	91.0	Perth-Port Hedland	90.4
Adelaide-Gold Coast	90.7	Darwin-Perth	90.0
Brisbane-Bundaberg	90.0	Hobart-Brisbane	89.9
Sydney-Proserpine	90.0	Perth-Newman	89.3

Table 3 Top ten airports for on time performance for November 2019 (participating airlines and reported routes only)

<i>Arrivals</i>		<i>Departures</i>	
<i>Airport</i>	<i>On Time (%)</i>	<i>Airport</i>	<i>On Time (%)</i>
Port Lincoln	93.2	Port Lincoln	92.8
Port Hedland	91.4	Bundaberg	89.3
Kalgoorlie	91.0	Karratha	88.3
Bundaberg	90.0	Kalgoorlie	87.3
Proserpine	88.2	Mackay	87.0
Karratha	88.0	Newman	86.7
Broome	87.8	Port Hedland	84.3
Newman	87.6	Emerald	83.9
Mount Isa	85.9	Mount Isa	83.8
Gladstone	84.2	Gladstone	83.7

Total industry on time performance

Figure 1 On time performance (by month from November 2016)—Total Industry

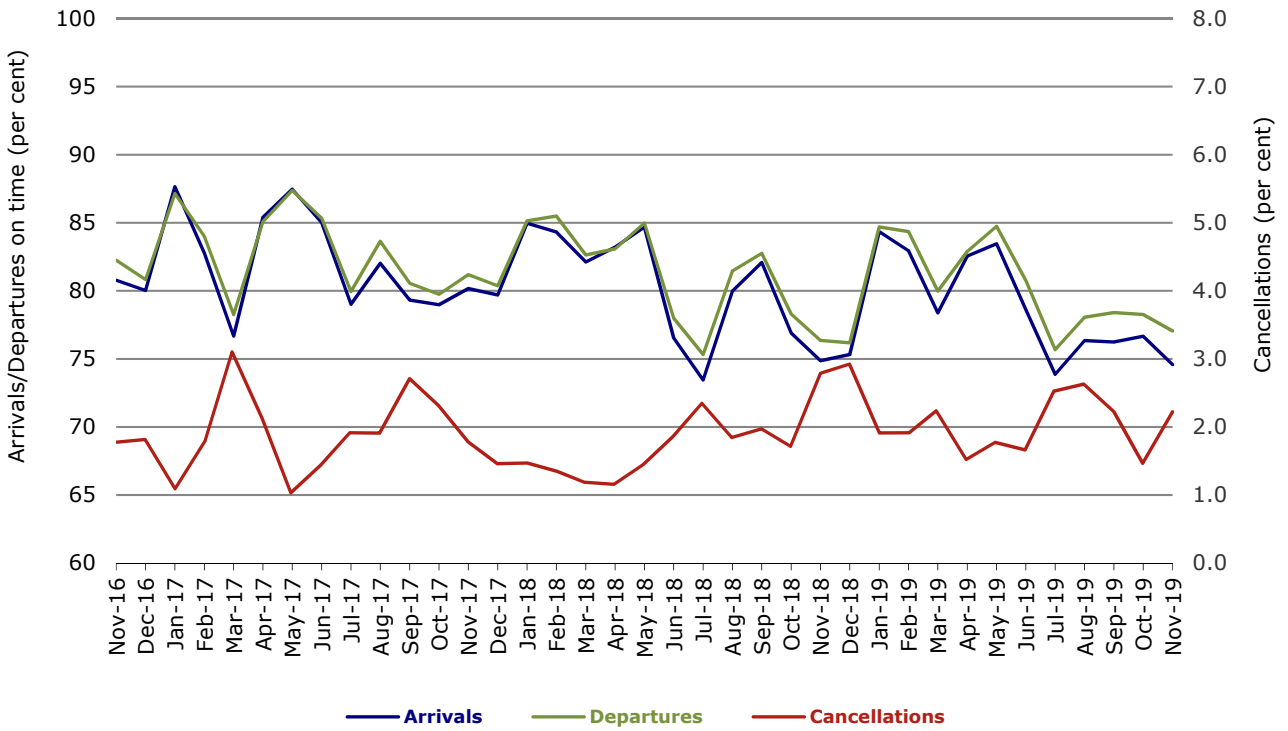


Figure 2 Arrivals on time (by month from November 2018)

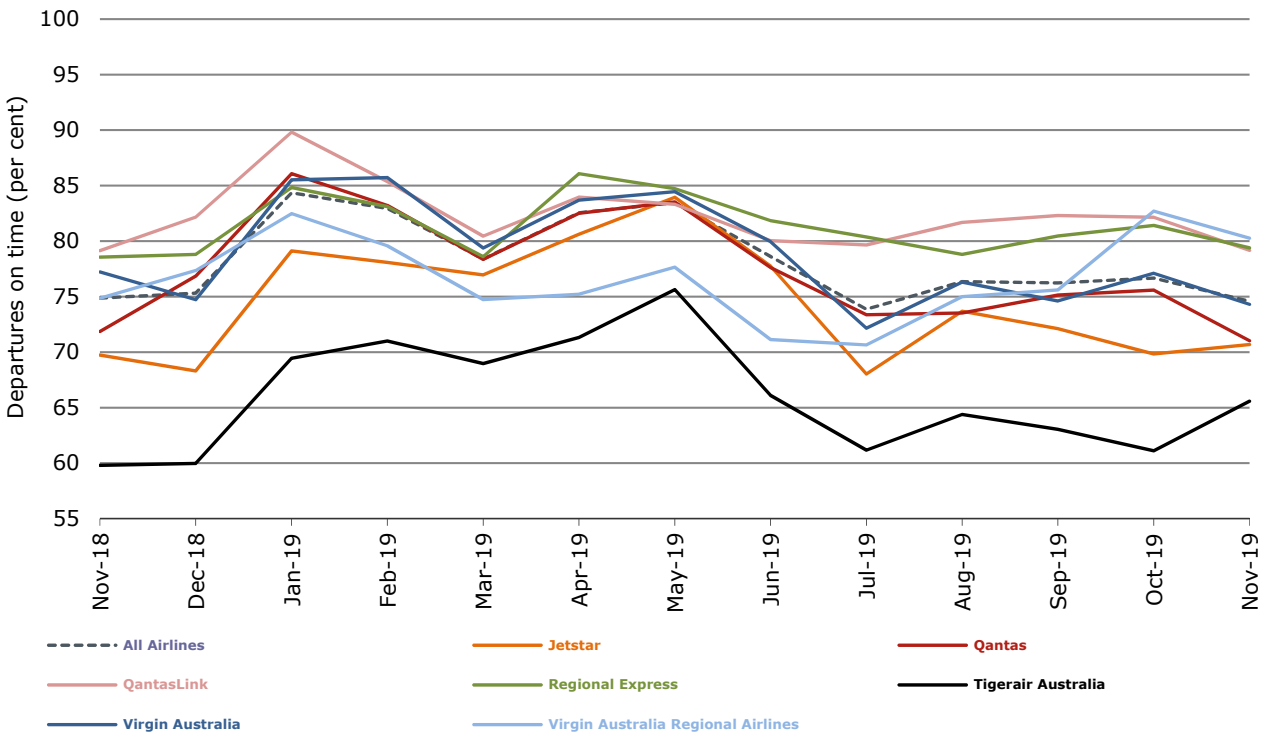


Figure 3 Departures on time (by month from November 2018)

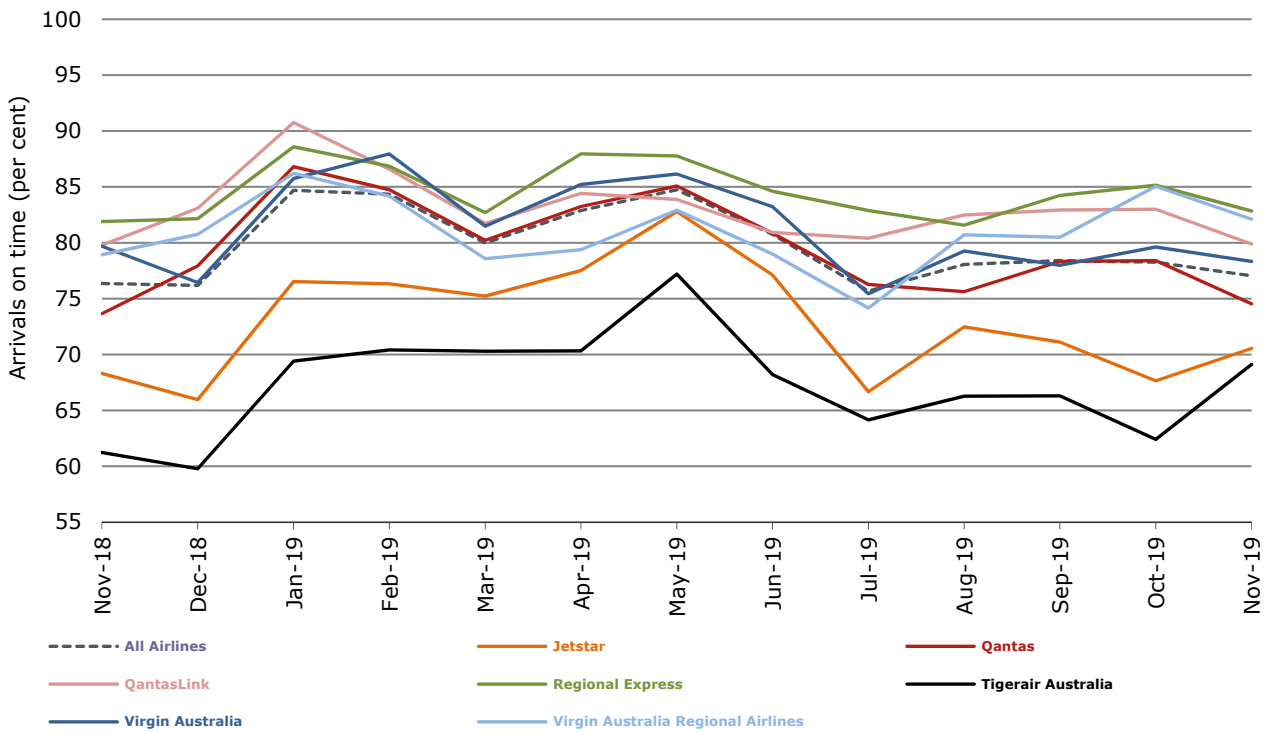
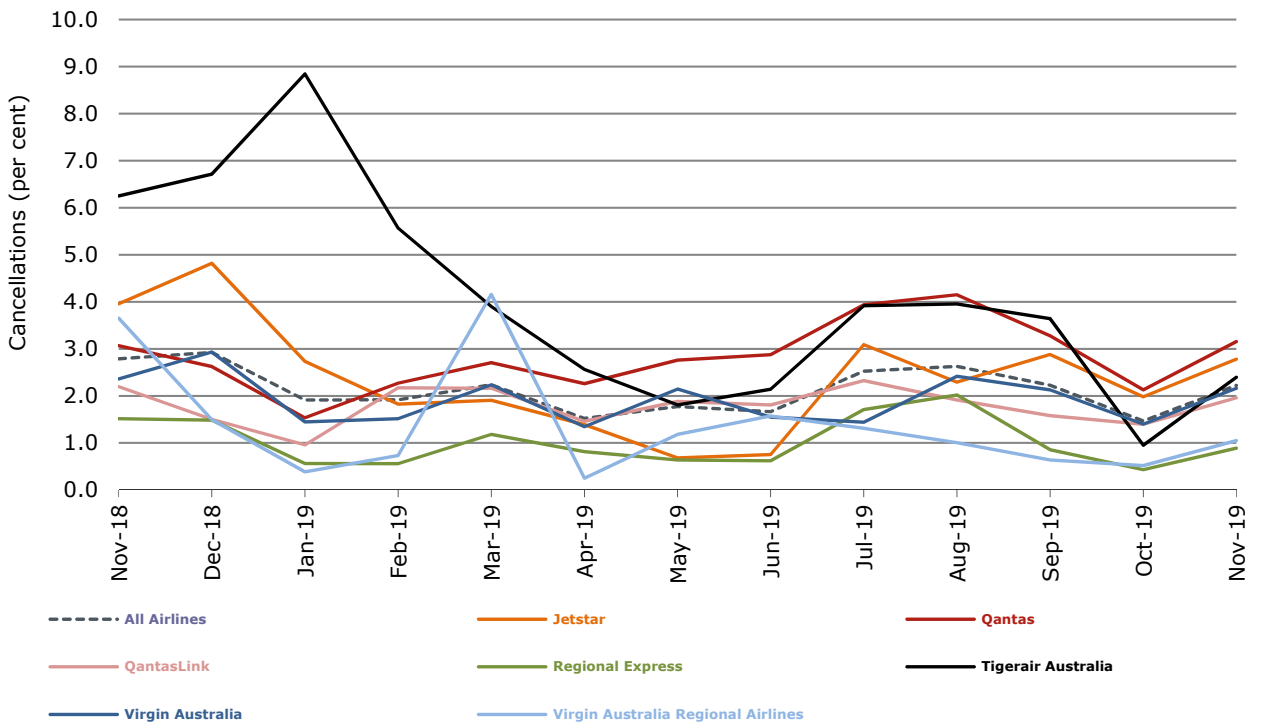


Figure 4 Cancellations (by month from November 2018)



Major domestic airlines on time performance

Figure 5 On time performance (by month from November 2016)—Jetstar

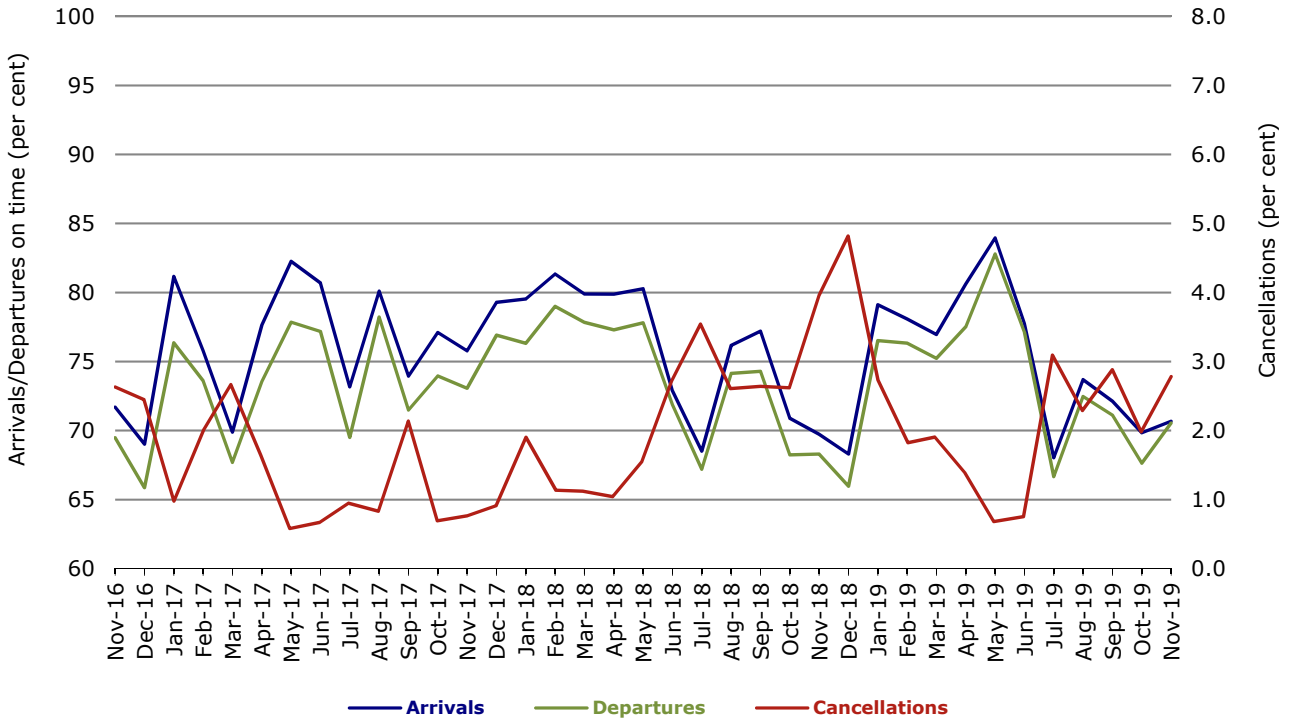


Figure 6 On time performance (by month from November 2016)—Qantas

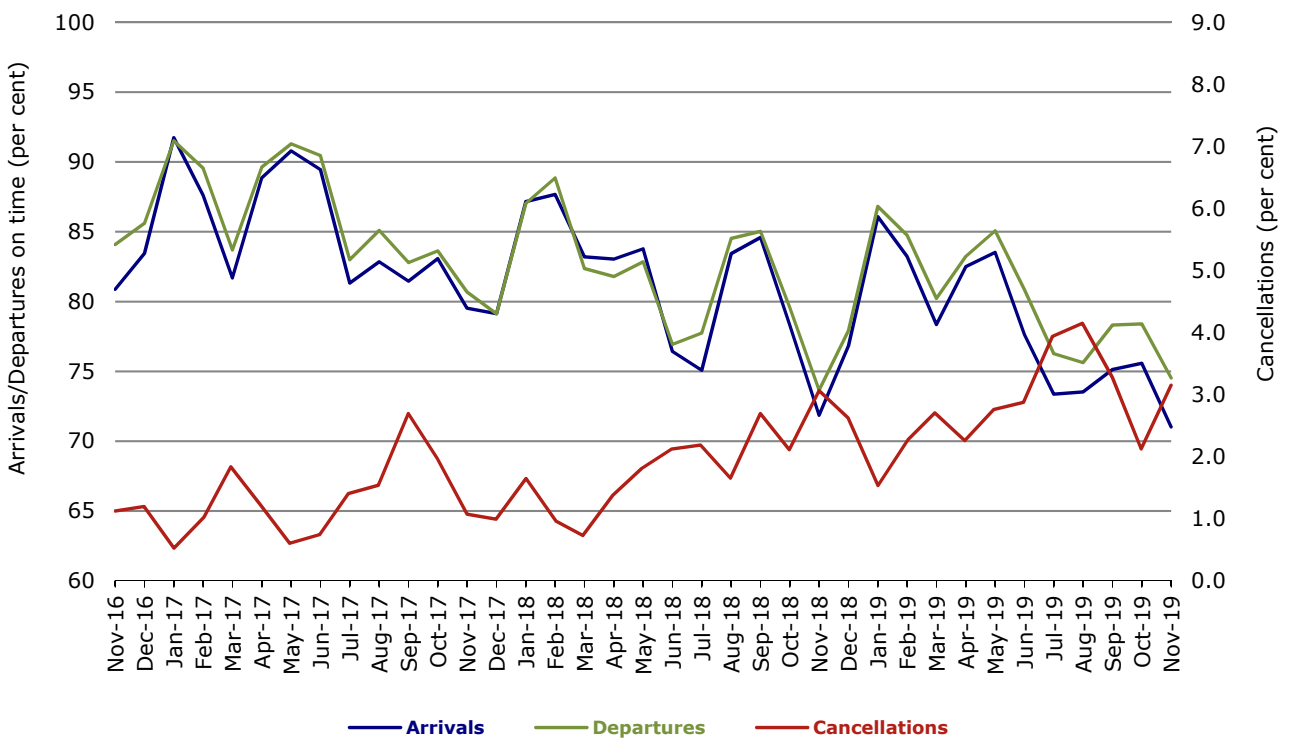


Figure 7 On time performance (by month from November 2016)—Tigerair Australia

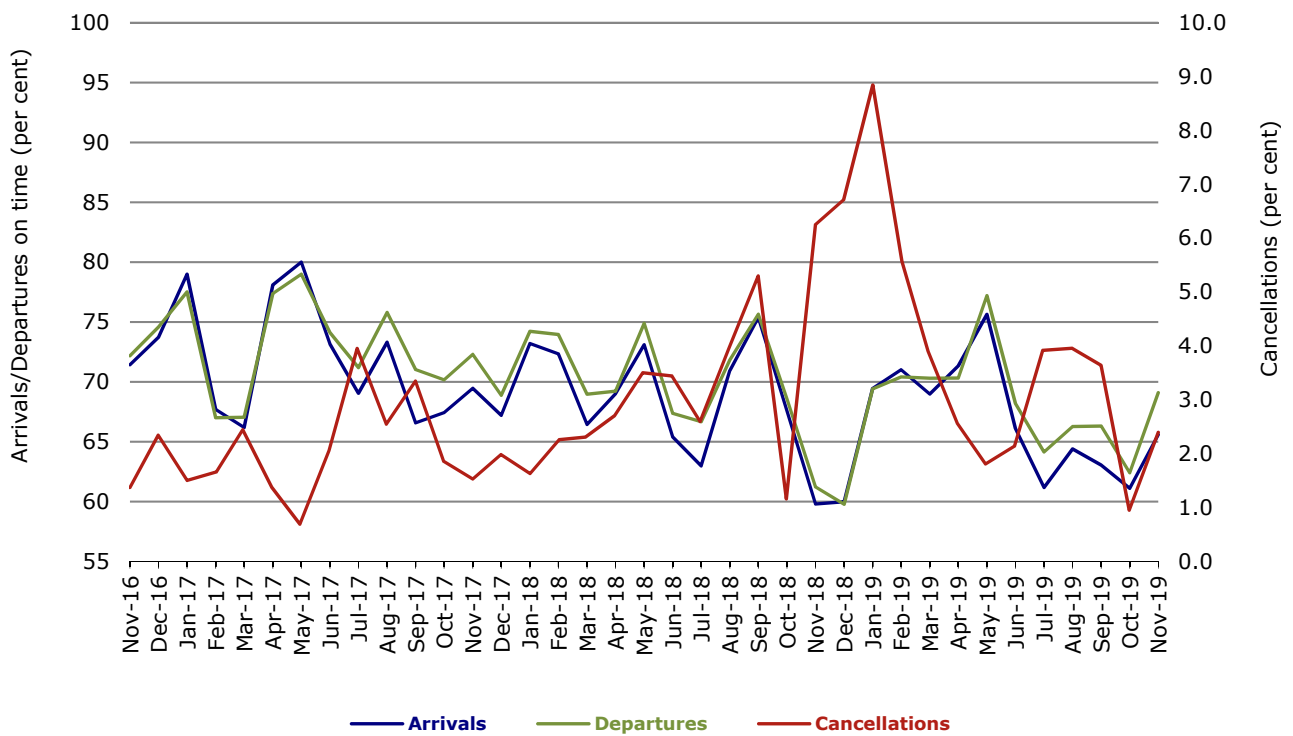
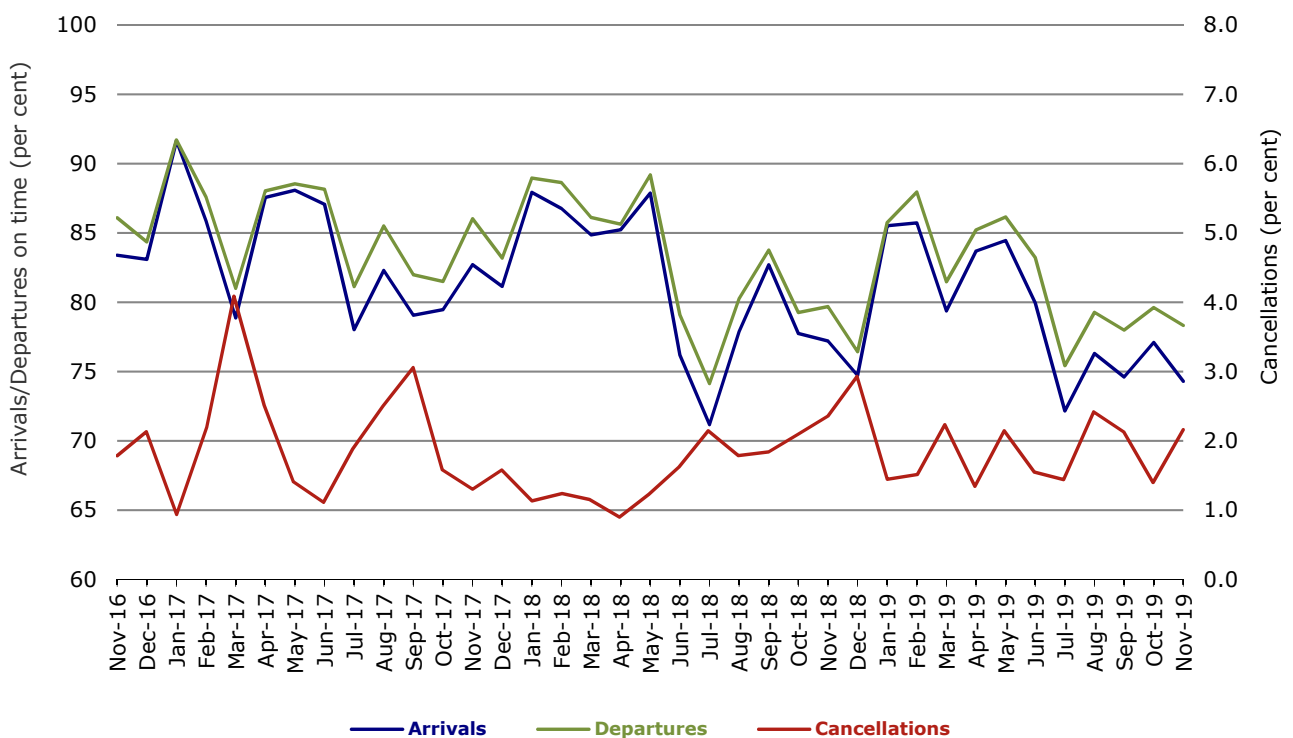


Figure 8 On time performance (by month from November 2016)—Virgin Australia



Major regional airlines on time performance

Figure 9 On time performance (by month from November 2016)—QantasLink

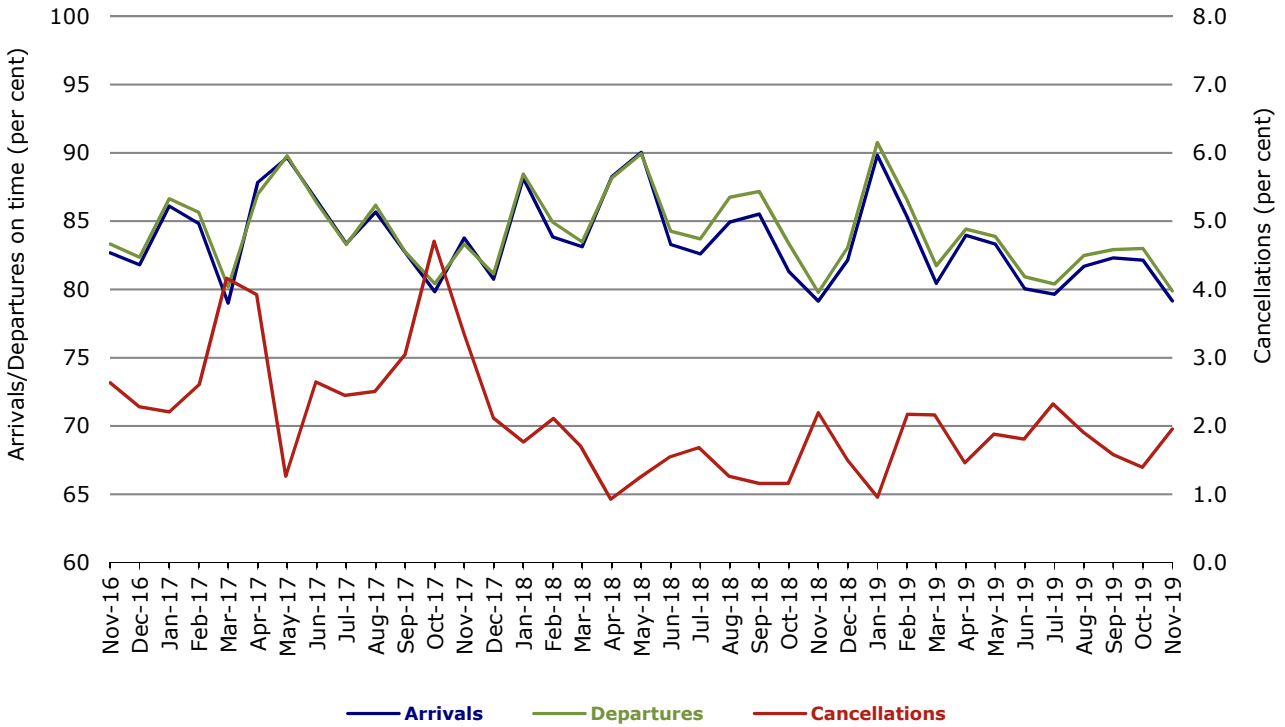


Figure 10 On time performance (by month from November 2016)—Regional Express

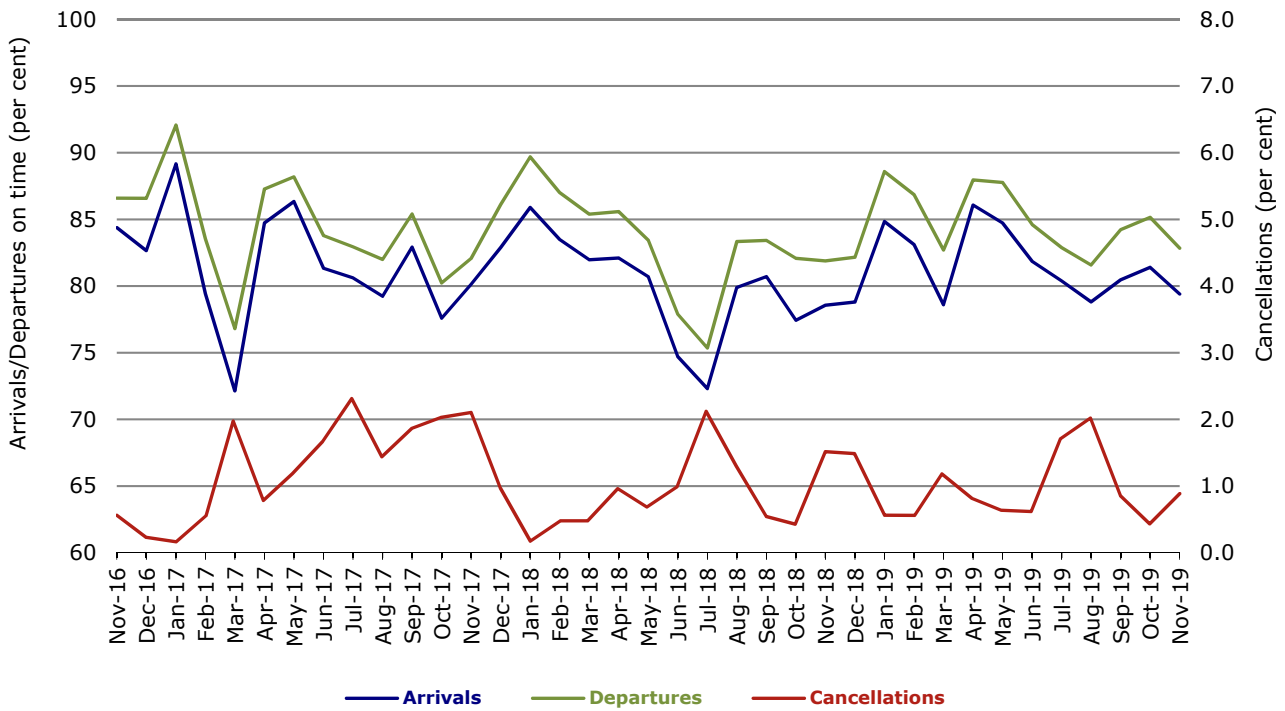
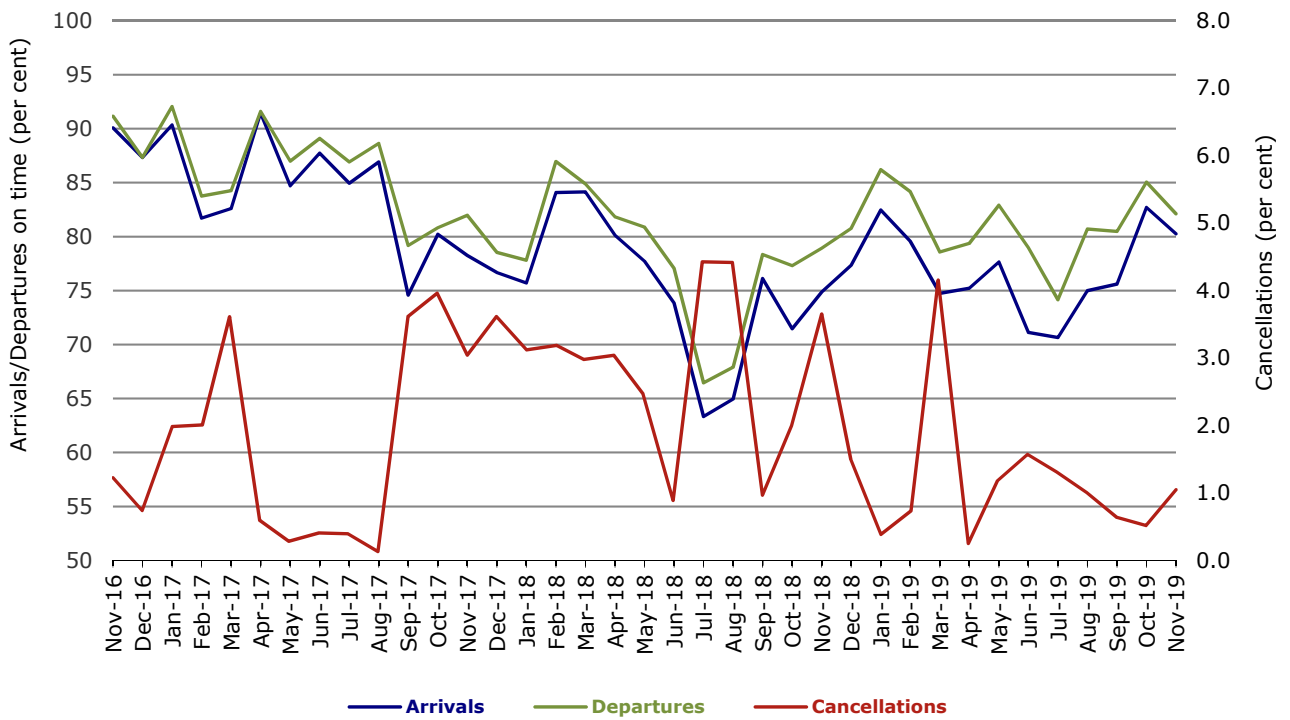


Figure 11 On time performance (by month from November 2016)
Virgin Australia Regional Airlines



Individual routes

On time performance is reported for all routes where the passenger load averages over 8000 passengers per month over the previous six months, and where two or more airlines operate in competition on those routes. There are now 64 routes which meet this definition. Over time, however, routes which meet this definition may change as airline networks and traffic levels vary.

	Sectors		Arrivals On Time		Departures On Time		Cancellations	
	Sched.	Flown	No.	%	No.	%	No.	%
Adelaide-Alice Springs								
Qantas	30	30	23	76.7	26	86.7	0	0.0
Virgin Australia Regional Airlines	21	21	14	66.7	16	76.2	0	0.0
All Airlines	51	51	37	72.5	42	82.4	0	0.0
Adelaide-Brisbane								
Jetstar	22	22	19	86.4	17	77.3	0	0.0
Qantas	107	107	99	92.5	97	90.7	0	0.0
Tigerair Australia	27	27	22	81.5	18	66.7	0	0.0
Virgin Australia	109	109	98	89.9	95	87.2	0	0.0
All Airlines	265	265	238	89.8	227	85.7	0	0.0
Adelaide-Canberra								
Qantas	42	41	37	90.2	36	87.8	1	2.4
QantasLink	5	5	4	80.0	4	80.0	0	0.0
Virgin Australia	25	25	21	84.0	22	88.0	0	0.0
All Airlines	72	71	62	87.3	62	87.3	1	1.4
Adelaide-Gold Coast								
Jetstar	26	26	21	80.8	16	61.5	0	0.0
Virgin Australia	28	28	28	100.0	28	100.0	0	0.0
All Airlines	54	54	49	90.7	44	81.5	0	0.0
Adelaide-Melbourne								
Jetstar	103	94	73	77.7	73	77.7	9	8.7
Qantas	290	289	216	74.7	206	71.3	1	0.3
Tigerair Australia	72	71	46	64.8	49	69.0	1	1.4
Virgin Australia	255	253	193	76.3	196	77.5	2	0.8
Virgin Australia Regional Airlines	12	12	10	83.3	8	66.7	0	0.0
All Airlines	732	719	538	74.8	532	74.0	13	1.8
Adelaide-Perth								
Jetstar	22	22	21	95.5	18	81.8	0	0.0
Qantas	119	119	105	88.2	97	81.5	0	0.0
Virgin Australia	43	43	30	69.8	32	74.4	0	0.0
Virgin Australia Regional Airlines	26	26	16	61.5	16	61.5	0	0.0
All Airlines	210	210	172	81.9	163	77.6	0	0.0
Adelaide-Port Lincoln								
QantasLink	98	98	92	93.9	92	93.9	0	0.0
Regional Express	211	211	196	92.9	203	96.2	0	0.0
All Airlines	309	309	288	93.2	295	95.5	0	0.0
Adelaide-Sydney								
Jetstar	119	113	86	76.1	81	71.7	6	5.0
Qantas	233	231	166	71.9	162	70.1	2	0.9
Tigerair Australia	29	29	11	37.9	13	44.8	0	0.0
Virgin Australia	164	162	140	86.4	144	88.9	2	1.2
All Airlines	545	535	403	75.3	400	74.8	10	1.8

	<i>Sectors</i>		<i>Arrivals On Time</i>		<i>Departures On Time</i>		<i>Cancellations</i>	
	<i>Sched.</i>	<i>Flown</i>	<i>No.</i>	<i>%</i>	<i>No.</i>	<i>%</i>	<i>No.</i>	<i>%</i>
Albury-Sydney								
QantasLink	107	104	77	74.0	76	73.1	3	2.8
Regional Express	103	103	83	80.6	89	86.4	0	0.0
Virgin Australia	54	54	32	59.3	32	59.3	0	0.0
All Airlines	264	261	192	73.6	197	75.5	3	1.1
Alice Springs-Adelaide								
Qantas	30	30	20	66.7	17	56.7	0	0.0
Virgin Australia Regional Airlines	21	21	19	90.5	19	90.5	0	0.0
All Airlines	51	51	39	76.5	36	70.6	0	0.0
Alice Springs-Darwin								
QantasLink	49	47	32	68.1	44	93.6	2	4.1
Virgin Australia Regional Airlines	21	21	15	71.4	15	71.4	0	0.0
All Airlines	70	68	47	69.1	59	86.8	2	2.9
Armidale-Sydney								
QantasLink	119	114	56	49.1	58	50.9	5	4.2
Regional Express	74	71	42	59.2	50	70.4	3	4.1
All Airlines	193	185	98	53.0	108	58.4	8	4.1
Ayers Rock-Sydney								
Jetstar	25	25	15	60.0	15	60.0	0	0.0
Virgin Australia	30	30	23	76.7	24	80.0	0	0.0
All Airlines	55	55	38	69.1	39	70.9	0	0.0
Ballina-Sydney								
Jetstar	68	68	47	69.1	46	67.6	0	0.0
Regional Express	25	25	22	88.0	21	84.0	0	0.0
Virgin Australia	36	35	29	82.9	20	57.1	1	2.8
All Airlines	129	128	98	76.6	87	68.0	1	0.8
Brisbane-Adelaide								
Jetstar	22	22	17	77.3	18	81.8	0	0.0
Qantas	107	107	86	80.4	89	83.2	0	0.0
Tigerair Australia	27	27	19	70.4	19	70.4	0	0.0
Virgin Australia	109	108	81	75.0	87	80.6	1	0.9
All Airlines	265	264	203	76.9	213	80.7	1	0.4
Brisbane-Bundaberg								
QantasLink	120	120	109	90.8	106	88.3	0	0.0
Virgin Australia	30	30	26	86.7	27	90.0	0	0.0
All Airlines	150	150	135	90.0	133	88.7	0	0.0
Brisbane-Cairns								
Jetstar	86	85	69	81.2	66	77.6	1	1.2
Qantas	30	30	28	93.3	28	93.3	0	0.0
QantasLink	123	122	98	80.3	103	84.4	1	0.8
Tigerair Australia	30	30	16	53.3	17	56.7	0	0.0
Virgin Australia	128	128	107	83.6	109	85.2	0	0.0
All Airlines	397	395	318	80.5	323	81.8	2	0.5
Brisbane-Canberra								
Qantas	2	2	1	50.0	1	50.0	0	0.0
QantasLink	147	147	116	78.9	119	81.0	0	0.0
Tigerair Australia	27	27	24	88.9	24	88.9	0	0.0
Virgin Australia	89	89	66	74.2	69	77.5	0	0.0
All Airlines	265	265	207	78.1	213	80.4	0	0.0

	Sectors		Arrivals On Time		Departures On Time		Cancellations	
	Sched.	Flown	No.	%	No.	%	No.	%
Brisbane-Darwin								
Jetstar	18	18	17	94.4	16	88.9	0	0.0
Qantas	30	30	20	66.7	25	83.3	0	0.0
Tigerair Australia	13	13	11	84.6	12	92.3	0	0.0
Virgin Australia	30	30	10	33.3	21	70.0	0	0.0
All Airlines	91	91	58	63.7	74	81.3	0	0.0
Brisbane-Emerald								
QantasLink	123	123	101	82.1	106	86.2	0	0.0
Virgin Australia	46	46	39	84.8	41	89.1	0	0.0
All Airlines	169	169	140	82.8	147	87.0	0	0.0
Brisbane-Gladstone								
QantasLink	137	137	111	81.0	115	83.9	0	0.0
Virgin Australia	72	72	65	90.3	64	88.9	0	0.0
All Airlines	209	209	176	84.2	179	85.6	0	0.0
Brisbane-Hamilton Island								
QantasLink	30	30	27	90.0	25	83.3	0	0.0
Virgin Australia	30	30	25	83.3	22	73.3	0	0.0
All Airlines	60	60	52	86.7	47	78.3	0	0.0
Brisbane-Hobart								
Jetstar	30	30	30	100.0	29	96.7	0	0.0
Virgin Australia	40	40	37	92.5	35	87.5	0	0.0
All Airlines	70	70	67	95.7	64	91.4	0	0.0
Brisbane-Mackay								
Jetstar	30	30	20	66.7	25	83.3	0	0.0
QantasLink	139	138	121	87.7	124	89.9	1	0.7
Virgin Australia	134	134	113	84.3	113	84.3	0	0.0
All Airlines	303	302	254	84.1	262	86.8	1	0.3
Brisbane-Melbourne								
Jetstar	120	117	77	65.8	76	65.0	3	2.5
Qantas	422	415	253	61.0	310	74.7	7	1.7
Tigerair Australia	114	112	73	65.2	81	72.3	2	1.8
Virgin Australia	375	362	252	69.6	306	84.5	13	3.5
All Airlines	1 031	1 006	655	65.1	773	76.8	25	2.4
Brisbane-Mount Isa								
QantasLink	55	55	46	83.6	46	83.6	0	0.0
Virgin Australia	16	16	15	93.8	14	87.5	0	0.0
All Airlines	71	71	61	85.9	60	84.5	0	0.0
Brisbane-Newcastle								
Jetstar	82	80	57	71.3	58	72.5	2	2.4
QantasLink	89	87	79	90.8	79	90.8	2	2.2
Virgin Australia	83	82	71	86.6	73	89.0	1	1.2
All Airlines	254	249	207	83.1	210	84.3	5	2.0
Brisbane-Perth								
Qantas	145	145	108	74.5	105	72.4	0	0.0
Virgin Australia	106	106	66	62.3	79	74.5	0	0.0
All Airlines	251	251	174	69.3	184	73.3	0	0.0
Brisbane-Proserpine								
Jetstar	30	30	29	96.7	27	90.0	0	0.0
Virgin Australia	42	42	34	81.0	40	95.2	0	0.0
All Airlines	72	72	63	87.5	67	93.1	0	0.0

	Sectors		Arrivals On Time		Departures On Time		Cancellations	
	Sched.	Flown	No.	%	No.	%	No.	%
Brisbane-Rockhampton								
QantasLink	175	173	143	82.7	141	81.5	2	1.1
Virgin Australia	131	131	100	76.3	97	74.0	0	0.0
All Airlines	306	304	243	79.9	238	78.3	2	0.7
Brisbane-Sydney								
Jetstar	158	147	103	70.1	108	73.5	11	7.0
Qantas	615	589	434	73.7	476	80.8	26	4.2
QantasLink	9	9	5	55.6	6	66.7	0	0.0
Tigerair Australia	129	126	78	61.9	90	71.4	3	2.3
Virgin Australia	513	490	370	75.5	395	80.6	23	4.5
All Airlines	1 424	1 361	990	72.7	1 075	79.0	63	4.4
Brisbane-Townsville								
Jetstar	41	41	38	92.7	35	85.4	0	0.0
Qantas	37	37	32	86.5	34	91.9	0	0.0
QantasLink	122	121	101	83.5	105	86.8	1	0.8
Virgin Australia	141	141	112	79.4	118	83.7	0	0.0
All Airlines	341	340	283	83.2	292	85.9	1	0.3
Broome-Perth								
Qantas	7	7	6	85.7	4	57.1	0	0.0
QantasLink	78	76	60	78.9	58	76.3	2	2.6
Virgin Australia	7	7	7	100.0	6	85.7	0	0.0
Virgin Australia Regional Airlines	47	47	41	87.2	39	83.0	0	0.0
All Airlines	139	137	114	83.2	107	78.1	2	1.4
Bundaberg-Brisbane								
QantasLink	120	120	106	88.3	107	89.2	0	0.0
Virgin Australia	30	30	27	90.0	27	90.0	0	0.0
All Airlines	150	150	133	88.7	134	89.3	0	0.0
Cairns-Brisbane								
Jetstar	86	86	78	90.7	75	87.2	0	0.0
Qantas	30	30	27	90.0	25	83.3	0	0.0
QantasLink	122	120	93	77.5	93	77.5	2	1.6
Tigerair Australia	30	30	20	66.7	15	50.0	0	0.0
Virgin Australia	128	128	121	94.5	114	89.1	0	0.0
All Airlines	396	394	339	86.0	322	81.7	2	0.5
Cairns-Melbourne								
Jetstar	86	85	61	71.8	58	68.2	1	1.2
Qantas	35	35	21	60.0	22	62.9	0	0.0
Tigerair Australia	39	39	19	48.7	21	53.8	0	0.0
Virgin Australia	30	30	15	50.0	19	63.3	0	0.0
All Airlines	190	189	116	61.4	120	63.5	1	0.5
Cairns-Sydney								
Jetstar	78	75	64	85.3	64	85.3	3	3.8
Qantas	60	60	33	55.0	35	58.3	0	0.0
Tigerair Australia	30	30	22	73.3	22	73.3	0	0.0
Virgin Australia	85	85	67	78.8	58	68.2	0	0.0
All Airlines	253	250	186	74.4	179	71.6	3	1.2
Cairns-Townsville								
QantasLink	131	131	116	88.5	117	89.3	0	0.0
Regional Express	13	13	10	76.9	10	76.9	0	0.0
All Airlines	144	144	126	87.5	127	88.2	0	0.0

	<i>Sectors</i>		<i>Arrivals On Time</i>		<i>Departures On Time</i>		<i>Cancellations</i>	
	<i>Sched.</i>	<i>Flown</i>	<i>No.</i>	<i>%</i>	<i>No.</i>	<i>%</i>	<i>No.</i>	<i>%</i>
Canberra-Adelaide								
Qantas	42	42	39	92.9	39	92.9	0	0.0
QantasLink	5	5	3	60.0	3	60.0	0	0.0
Virgin Australia	25	25	15	60.0	18	72.0	0	0.0
All Airlines	72	72	57	79.2	60	83.3	0	0.0
Canberra-Brisbane								
Qantas	1	1	1	100.0	1	100.0	0	0.0
QantasLink	147	145	116	80.0	110	75.9	2	1.4
Tigerair Australia	27	27	23	85.2	23	85.2	0	0.0
Virgin Australia	91	91	77	84.6	75	82.4	0	0.0
All Airlines	266	264	217	82.2	209	79.2	2	0.8
Canberra-Melbourne								
Qantas	239	232	181	78.0	189	81.5	7	2.9
QantasLink	43	43	25	58.1	28	65.1	0	0.0
Tigerair Australia	41	40	29	72.5	31	77.5	1	2.4
Virgin Australia	161	153	112	73.2	125	81.7	8	5.0
All Airlines	484	468	347	74.1	373	79.7	16	3.3
Canberra-Sydney								
QantasLink	480	467	337	72.2	345	73.9	13	2.7
Virgin Australia	247	236	182	77.1	189	80.1	11	4.5
All Airlines	727	703	519	73.8	534	76.0	24	3.3
Coffs Harbour-Sydney								
QantasLink	146	128	93	72.7	96	75.0	18	12.3
Tigerair Australia	20	17	12	70.6	14	82.4	3	15.0
Virgin Australia	30	30	14	46.7	16	53.3	0	0.0
All Airlines	196	175	119	68.0	126	72.0	21	10.7
Darwin-Alice Springs								
QantasLink	49	48	31	64.6	38	79.2	1	2.0
Virgin Australia Regional Airlines	21	21	18	85.7	19	90.5	0	0.0
All Airlines	70	69	49	71.0	57	82.6	1	1.4
Darwin-Brisbane								
Jetstar	18	18	17	94.4	15	83.3	0	0.0
Qantas	31	31	22	71.0	14	45.2	0	0.0
Tigerair Australia	13	13	11	84.6	8	61.5	0	0.0
Virgin Australia	30	30	25	83.3	19	63.3	0	0.0
All Airlines	92	92	75	81.5	56	60.9	0	0.0
Darwin-Melbourne								
Jetstar	17	17	12	70.6	9	52.9	0	0.0
Qantas	30	30	25	83.3	18	60.0	0	0.0
Virgin Australia	30	30	26	86.7	25	83.3	0	0.0
All Airlines	77	77	63	81.8	52	67.5	0	0.0
Darwin-Perth								
Qantas	30	30	24	80.0	28	93.3	0	0.0
Virgin Australia	21	21	20	95.2	20	95.2	0	0.0
Virgin Australia Regional Airlines	9	9	6	66.7	6	66.7	0	0.0
All Airlines	60	60	50	83.3	54	90.0	0	0.0
Darwin-Sydney								
Jetstar	15	15	10	66.7	11	73.3	0	0.0
Qantas	36	36	22	61.1	15	41.7	0	0.0
Virgin Australia	28	28	21	75.0	14	50.0	0	0.0
All Airlines	79	79	53	67.1	40	50.6	0	0.0

	<i>Sectors</i>		<i>Arrivals On Time</i>		<i>Departures On Time</i>		<i>Cancellations</i>	
	<i>Sched.</i>	<i>Flown</i>	<i>No.</i>	<i>%</i>	<i>No.</i>	<i>%</i>	<i>No.</i>	<i>%</i>
Dubbo-Sydney								
QantasLink	121	119	88	73.9	82	68.9	2	1.7
Regional Express	126	125	85	68.0	94	75.2	1	0.8
All Airlines	247	244	173	70.9	176	72.1	3	1.2
Emerald-Brisbane								
QantasLink	123	122	95	77.9	98	80.3	1	0.8
Virgin Australia	46	46	44	95.7	43	93.5	0	0.0
All Airlines	169	168	139	82.7	141	83.9	1	0.6
Gladstone-Brisbane								
QantasLink	137	137	112	81.8	107	78.1	0	0.0
Virgin Australia	72	72	65	90.3	68	94.4	0	0.0
All Airlines	209	209	177	84.7	175	83.7	0	0.0
Gold Coast-Adelaide								
Jetstar	26	26	23	88.5	22	84.6	0	0.0
Virgin Australia	28	28	20	71.4	19	67.9	0	0.0
All Airlines	54	54	43	79.6	41	75.9	0	0.0
Gold Coast-Melbourne								
Jetstar	161	159	98	61.6	91	57.2	2	1.2
Qantas	40	40	17	42.5	20	50.0	0	0.0
Tigerair Australia	81	80	49	61.3	46	57.5	1	1.2
Virgin Australia	192	192	125	65.1	114	59.4	0	0.0
All Airlines	474	471	289	61.4	271	57.5	3	0.6
Gold Coast-Sydney								
Jetstar	267	258	195	75.6	188	72.9	9	3.4
Qantas	60	58	35	60.3	35	60.3	2	3.3
QantasLink	70	69	41	59.4	46	66.7	1	1.4
Tigerair Australia	85	84	49	58.3	48	57.1	1	1.2
Virgin Australia	258	254	173	68.1	160	63.0	4	1.6
All Airlines	740	723	493	68.2	477	66.0	17	2.3
Hamilton Island-Brisbane								
QantasLink	30	30	24	80.0	25	83.3	0	0.0
Virgin Australia	30	30	28	93.3	26	86.7	0	0.0
All Airlines	60	60	52	86.7	51	85.0	0	0.0
Hamilton Island-Sydney								
Jetstar	19	19	13	68.4	14	73.7	0	0.0
Qantas	9	9	9	100.0	9	100.0	0	0.0
QantasLink	21	20	14	70.0	16	80.0	1	4.8
Virgin Australia	30	30	17	56.7	17	56.7	0	0.0
All Airlines	79	78	53	67.9	56	71.8	1	1.3
Hobart-Brisbane								
Jetstar	30	30	27	90.0	28	93.3	0	0.0
Virgin Australia	39	39	33	84.6	34	87.2	0	0.0
All Airlines	69	69	60	87.0	62	89.9	0	0.0
Hobart-Melbourne								
Jetstar	173	170	81	47.6	94	55.3	3	1.7
Qantas	115	115	73	63.5	81	70.4	0	0.0
Tigerair Australia	44	43	24	55.8	24	55.8	1	2.3
Virgin Australia	140	140	80	57.1	103	73.6	0	0.0
All Airlines	472	468	258	55.1	302	64.5	4	0.8

	<i>Sectors</i>		<i>Arrivals On Time</i>		<i>Departures On Time</i>		<i>Cancellations</i>	
	<i>Sched.</i>	<i>Flown</i>	<i>No.</i>	<i>%</i>	<i>No.</i>	<i>%</i>	<i>No.</i>	<i>%</i>
Hobart-Sydney								
Jetstar	100	98	57	58.2	71	72.4	2	2.0
QantasLink	79	78	56	71.8	59	75.6	1	1.3
Virgin Australia	69	69	43	62.3	50	72.5	0	0.0
All Airlines	248	245	156	63.7	180	73.5	3	1.2
Kalgoorlie-Perth								
Qantas	13	13	13	100.0	13	100.0	0	0.0
QantasLink	60	60	52	86.7	51	85.0	0	0.0
Virgin Australia	15	15	13	86.7	13	86.7	0	0.0
Virgin Australia Regional Airlines	56	54	47	87.0	47	87.0	2	3.6
All Airlines	144	142	125	88.0	124	87.3	2	1.4
Karratha-Perth								
Qantas	73	69	63	91.3	62	89.9	4	5.5
QantasLink	107	104	98	94.2	98	94.2	3	2.8
Virgin Australia	1	1	1	100.0	1	100.0	0	0.0
Virgin Australia Regional Airlines	67	66	49	74.2	51	77.3	1	1.5
All Airlines	248	240	211	87.9	212	88.3	8	3.2
Launceston-Melbourne								
Jetstar	132	131	79	60.3	88	67.2	1	0.8
QantasLink	115	110	77	70.0	82	74.5	5	4.3
Virgin Australia	95	95	64	67.4	78	82.1	0	0.0
All Airlines	342	336	220	65.5	248	73.8	6	1.8
Launceston-Sydney								
Jetstar	48	47	30	63.8	26	55.3	1	2.1
Virgin Australia	30	30	26	86.7	27	90.0	0	0.0
All Airlines	78	77	56	72.7	53	68.8	1	1.3
Mackay-Brisbane								
Jetstar	30	30	18	60.0	15	50.0	0	0.0
QantasLink	136	135	122	90.4	121	89.6	1	0.7
Virgin Australia	134	134	127	94.8	124	92.5	0	0.0
All Airlines	300	299	267	89.3	260	87.0	1	0.3
Melbourne-Adelaide								
Jetstar	104	96	67	69.8	70	72.9	8	7.7
Qantas	290	288	201	69.8	219	76.0	2	0.7
Tigerair Australia	72	71	52	73.2	57	80.3	1	1.4
Virgin Australia	255	253	170	67.2	205	81.0	2	0.8
Virgin Australia Regional Airlines	12	12	8	66.7	8	66.7	0	0.0
All Airlines	733	720	498	69.2	559	77.6	13	1.8
Melbourne-Brisbane								
Jetstar	120	118	83	70.3	79	66.9	2	1.7
Qantas	419	409	295	72.1	296	72.4	10	2.4
Tigerair Australia	114	112	88	78.6	91	81.3	2	1.8
Virgin Australia	375	364	285	78.3	298	81.9	11	2.9
All Airlines	1 028	1 003	751	74.9	764	76.2	25	2.4
Melbourne-Cairns								
Jetstar	86	85	58	68.2	60	70.6	1	1.2
Qantas	35	35	26	74.3	29	82.9	0	0.0
Tigerair Australia	39	39	30	76.9	34	87.2	0	0.0
Virgin Australia	30	30	23	76.7	26	86.7	0	0.0
All Airlines	190	189	137	72.5	149	78.8	1	0.5

	<i>Sectors</i>		<i>Arrivals On Time</i>		<i>Departures On Time</i>		<i>Cancellations</i>	
	<i>Sched.</i>	<i>Flown</i>	<i>No.</i>	<i>%</i>	<i>No.</i>	<i>%</i>	<i>No.</i>	<i>%</i>
Melbourne-Canberra								
Qantas	241	235	186	79.1	185	78.7	6	2.5
QantasLink	43	42	30	71.4	30	71.4	1	2.3
Tigerair Australia	41	40	30	75.0	32	80.0	1	2.4
Virgin Australia	162	152	119	78.3	122	80.3	10	6.2
All Airlines	487	469	365	77.8	369	78.7	18	3.7
Melbourne-Darwin								
Jetstar	17	17	11	64.7	13	76.5	0	0.0
Qantas	30	30	23	76.7	27	90.0	0	0.0
Virgin Australia	30	30	14	46.7	17	56.7	0	0.0
All Airlines	77	77	48	62.3	57	74.0	0	0.0
Melbourne-Gold Coast								
Jetstar	160	160	92	57.5	89	55.6	0	0.0
Qantas	40	40	32	80.0	32	80.0	0	0.0
Tigerair Australia	81	80	54	67.5	61	76.3	1	1.2
Virgin Australia	192	192	140	72.9	148	77.1	0	0.0
All Airlines	473	472	318	67.4	330	69.9	1	0.2
Melbourne-Hobart								
Jetstar	173	171	117	68.4	117	68.4	2	1.2
Qantas	115	115	80	69.6	76	66.1	0	0.0
Tigerair Australia	44	44	35	79.5	41	93.2	0	0.0
Virgin Australia	139	139	102	73.4	105	75.5	0	0.0
All Airlines	471	469	334	71.2	339	72.3	2	0.4
Melbourne-Launceston								
Jetstar	132	131	92	70.2	88	67.2	1	0.8
QantasLink	115	110	83	75.5	78	70.9	5	4.3
Virgin Australia	95	95	73	76.8	77	81.1	0	0.0
All Airlines	342	336	248	73.8	243	72.3	6	1.8
Melbourne-Mildura								
QantasLink	94	88	65	73.9	71	80.7	6	6.4
Regional Express	84	84	59	70.2	65	77.4	0	0.0
Virgin Australia	30	30	25	83.3	28	93.3	0	0.0
All Airlines	208	202	149	73.8	164	81.2	6	2.9
Melbourne-Newcastle								
Jetstar	88	88	42	47.7	39	44.3	0	0.0
Virgin Australia	39	39	29	74.4	34	87.2	0	0.0
All Airlines	127	127	71	55.9	73	57.5	0	0.0
Melbourne-Perth								
Jetstar	52	49	45	91.8	42	85.7	3	5.8
Qantas	195	193	125	64.8	132	68.4	2	1.0
Tigerair Australia	55	54	42	77.8	37	68.5	1	1.8
Virgin Australia	146	146	102	69.9	99	67.8	0	0.0
All Airlines	448	442	314	71.0	310	70.1	6	1.3
Melbourne-Sunshine Coast								
Jetstar	81	79	68	86.1	67	84.8	2	2.5
Virgin Australia	70	70	62	88.6	61	87.1	0	0.0
All Airlines	151	149	130	87.2	128	85.9	2	1.3

	<i>Sectors</i>		<i>Arrivals On Time</i>		<i>Departures On Time</i>		<i>Cancellations</i>	
	<i>Sched.</i>	<i>Flown</i>	<i>No.</i>	<i>%</i>	<i>No.</i>	<i>%</i>	<i>No.</i>	<i>%</i>
Melbourne-Sydney								
Jetstar	382	357	217	60.8	220	61.6	25	6.5
Qantas	1 057	974	643	66.0	701	72.0	83	7.9
Tigerair Australia	238	225	133	59.1	151	67.1	13	5.5
Virgin Australia	752	706	493	69.8	552	78.2	46	6.1
All Airlines	2 429	2 262	1 486	65.7	1 624	71.8	167	6.9
Mildura-Melbourne								
QantasLink	94	87	54	62.1	61	70.1	7	7.4
Regional Express	84	84	58	69.0	60	71.4	0	0.0
Virgin Australia	30	30	23	76.7	26	86.7	0	0.0
All Airlines	208	201	135	67.2	147	73.1	7	3.4
Mount Isa-Brisbane								
QantasLink	55	55	46	83.6	45	81.8	0	0.0
Virgin Australia	13	13	8	61.5	12	92.3	0	0.0
All Airlines	68	68	54	79.4	57	83.8	0	0.0
Newcastle-Brisbane								
Jetstar	82	80	61	76.3	68	85.0	2	2.4
QantasLink	90	88	84	95.5	78	88.6	2	2.2
Virgin Australia	84	83	71	85.5	73	88.0	1	1.2
All Airlines	256	251	216	86.1	219	87.3	5	2.0
Newcastle-Melbourne								
Jetstar	88	87	58	66.7	64	73.6	1	1.1
Virgin Australia	39	39	23	59.0	29	74.4	0	0.0
All Airlines	127	126	81	64.3	93	73.8	1	0.8
Newman-Perth								
Qantas	45	43	38	88.4	38	88.4	2	4.4
QantasLink	89	86	75	87.2	76	88.4	3	3.4
Virgin Australia	12	12	11	91.7	10	83.3	0	0.0
Virgin Australia Regional Airlines	25	24	21	87.5	19	79.2	1	4.0
All Airlines	171	165	145	87.9	143	86.7	6	3.5
Perth-Adelaide								
Jetstar	22	21	17	81.0	15	71.4	1	4.5
Qantas	118	118	94	79.7	94	79.7	0	0.0
Virgin Australia	42	42	35	83.3	39	92.9	0	0.0
Virgin Australia Regional Airlines	27	27	19	70.4	25	92.6	0	0.0
All Airlines	209	208	165	79.3	173	83.2	1	0.5
Perth-Brisbane								
Qantas	146	146	116	79.5	109	74.7	0	0.0
Virgin Australia	104	104	85	81.7	88	84.6	0	0.0
All Airlines	250	250	201	80.4	197	78.8	0	0.0
Perth-Broome								
Qantas	7	7	4	57.1	4	57.1	0	0.0
QantasLink	78	78	69	88.5	68	87.2	0	0.0
Virgin Australia	7	7	6	85.7	6	85.7	0	0.0
Virgin Australia Regional Airlines	47	47	43	91.5	43	91.5	0	0.0
All Airlines	139	139	122	87.8	121	87.1	0	0.0
Perth-Darwin								
Qantas	30	30	28	93.3	28	93.3	0	0.0
Virgin Australia	21	21	20	95.2	21	100.0	0	0.0
Virgin Australia Regional Airlines	9	9	8	88.9	8	88.9	0	0.0
All Airlines	60	60	56	93.3	57	95.0	0	0.0

	Sectors		Arrivals On Time		Departures On Time		Cancellations	
	Sched.	Flown	No.	%	No.	%	No.	%
Perth-Kalgoorlie								
Qantas	13	13	12	92.3	12	92.3	0	0.0
QantasLink	60	60	53	88.3	54	90.0	0	0.0
Virgin Australia	15	15	15	100.0	15	100.0	0	0.0
Virgin Australia Regional Airlines	57	56	51	91.1	53	94.6	1	1.8
All Airlines	145	144	131	91.0	134	93.1	1	0.7
Perth-Karratha								
Qantas	73	70	63	90.0	62	88.6	3	4.1
QantasLink	107	105	95	90.5	96	91.4	2	1.9
Virgin Australia	1	1	1	100.0	1	100.0	0	0.0
Virgin Australia Regional Airlines	67	66	54	81.8	54	81.8	1	1.5
All Airlines	248	242	213	88.0	213	88.0	6	2.4
Perth-Melbourne								
Jetstar	52	48	39	81.3	39	81.3	4	7.7
Qantas	198	197	149	75.6	154	78.2	1	0.5
Tigerair Australia	56	55	37	67.3	32	58.2	1	1.8
Virgin Australia	148	148	116	78.4	124	83.8	0	0.0
All Airlines	454	448	341	76.1	349	77.9	6	1.3
Perth-Newman								
Qantas	45	44	41	93.2	41	93.2	1	2.2
QantasLink	89	88	74	84.1	77	87.5	1	1.1
Virgin Australia	12	12	11	91.7	11	91.7	0	0.0
Virgin Australia Regional Airlines	25	25	22	88.0	22	88.0	0	0.0
All Airlines	171	169	148	87.6	151	89.3	2	1.2
Perth-Port Hedland								
Qantas	36	33	31	93.9	30	90.9	3	8.3
QantasLink	103	102	93	91.2	90	88.2	1	1.0
Virgin Australia	12	12	12	100.0	12	100.0	0	0.0
Virgin Australia Regional Airlines	41	40	35	87.5	37	92.5	1	2.4
All Airlines	192	187	171	91.4	169	90.4	5	2.6
Perth-Sydney								
Jetstar	26	25	18	72.0	16	64.0	1	3.8
Qantas	204	199	149	74.9	150	75.4	5	2.5
Tigerair Australia	25	24	17	70.8	14	58.3	1	4.0
Virgin Australia	116	116	98	84.5	105	90.5	0	0.0
All Airlines	371	364	282	77.5	285	78.3	7	1.9
Port Hedland-Perth								
Qantas	36	33	28	84.8	28	84.8	3	8.3
QantasLink	104	100	81	81.0	84	84.0	4	3.8
Virgin Australia	12	12	10	83.3	9	75.0	0	0.0
Virgin Australia Regional Airlines	41	40	35	87.5	35	87.5	1	2.4
All Airlines	193	185	154	83.2	156	84.3	8	4.1
Port Lincoln-Adelaide								
QantasLink	98	98	93	94.9	92	93.9	0	0.0
Regional Express	210	209	193	92.3	193	92.3	1	0.5
All Airlines	308	307	286	93.2	285	92.8	1	0.3
Port Macquarie-Sydney								
QantasLink	116	103	76	73.8	77	74.8	13	11.2
Virgin Australia	54	47	21	44.7	20	42.6	7	13.0
All Airlines	170	150	97	64.7	97	64.7	20	11.8

	<i>Sectors</i>		<i>Arrivals On Time</i>		<i>Departures On Time</i>		<i>Cancellations</i>	
	<i>Sched.</i>	<i>Flown</i>	<i>No.</i>	<i>%</i>	<i>No.</i>	<i>%</i>	<i>No.</i>	<i>%</i>
Proserpine-Brisbane								
Jetstar	30	30	27	90.0	29	96.7	0	0.0
Virgin Australia	42	42	36	85.7	33	78.6	0	0.0
All Airlines	72	72	63	87.5	62	86.1	0	0.0
Proserpine-Sydney								
Jetstar	15	13	9	69.2	9	69.2	2	13.3
Tigerair Australia	17	17	10	58.8	12	70.6	0	0.0
All Airlines	32	30	19	63.3	21	70.0	2	6.3
Rockhampton-Brisbane								
QantasLink	180	179	143	79.9	144	80.4	1	0.6
Virgin Australia	132	132	111	84.1	106	80.3	0	0.0
All Airlines	312	311	254	81.7	250	80.4	1	0.3
Sunshine Coast-Melbourne								
Jetstar	82	80	49	61.3	55	68.8	2	2.4
Virgin Australia	70	70	42	60.0	50	71.4	0	0.0
All Airlines	152	150	91	60.7	105	70.0	2	1.3
Sunshine Coast-Sydney								
Jetstar	106	103	48	46.6	50	48.5	3	2.8
QantasLink	56	56	42	75.0	38	67.9	0	0.0
Virgin Australia	52	50	31	62.0	39	78.0	2	3.8
All Airlines	214	209	121	57.9	127	60.8	5	2.3
Sydney-Adelaide								
Jetstar	117	113	73	64.6	76	67.3	4	3.4
Qantas	233	231	131	56.7	149	64.5	2	0.9
Tigerair Australia	29	29	17	58.6	18	62.1	0	0.0
Virgin Australia	164	162	123	75.9	124	76.5	2	1.2
All Airlines	543	535	344	64.3	367	68.6	8	1.5
Sydney-Albury								
QantasLink	107	104	72	69.2	67	64.4	3	2.8
Regional Express	104	104	82	78.8	84	80.8	0	0.0
Virgin Australia	54	54	36	66.7	34	63.0	0	0.0
All Airlines	265	262	190	72.5	185	70.6	3	1.1
Sydney-Armidale								
QantasLink	115	114	55	48.2	62	54.4	1	0.9
Regional Express	71	68	52	76.5	54	79.4	3	4.2
All Airlines	186	182	107	58.8	116	63.7	4	2.2
Sydney-Ayers Rock								
Jetstar	25	25	18	72.0	20	80.0	0	0.0
Virgin Australia	30	30	27	90.0	26	86.7	0	0.0
All Airlines	55	55	45	81.8	46	83.6	0	0.0
Sydney-Ballina								
Jetstar	68	68	52	76.5	55	80.9	0	0.0
Regional Express	24	24	16	66.7	17	70.8	0	0.0
Virgin Australia	36	35	29	82.9	31	88.6	1	2.8
All Airlines	128	127	97	76.4	103	81.1	1	0.8

	<i>Sectors</i>		<i>Arrivals On Time</i>		<i>Departures On Time</i>		<i>Cancellations</i>	
	<i>Sched.</i>	<i>Flown</i>	<i>No.</i>	<i>%</i>	<i>No.</i>	<i>%</i>	<i>No.</i>	<i>%</i>
Sydney-Brisbane								
Jetstar	157	146	104	71.2	101	69.2	11	7.0
Qantas	616	596	432	72.5	448	75.2	20	3.2
QantasLink	9	9	9	100.0	9	100.0	0	0.0
Tigerair Australia	129	126	80	63.5	88	69.8	3	2.3
Virgin Australia	512	484	347	71.7	352	72.7	28	5.5
All Airlines	1 423	1 361	972	71.4	998	73.3	62	4.4
Sydney-Cairns								
Jetstar	77	75	61	81.3	62	82.7	2	2.6
Qantas	60	60	40	66.7	46	76.7	0	0.0
Tigerair Australia	30	30	25	83.3	27	90.0	0	0.0
Virgin Australia	84	84	48	57.1	54	64.3	0	0.0
All Airlines	251	249	174	69.9	189	75.9	2	0.8
Sydney-Canberra								
QantasLink	478	469	335	71.4	349	74.4	9	1.9
Virgin Australia	247	239	163	68.2	171	71.5	8	3.2
All Airlines	725	708	498	70.3	520	73.4	17	2.3
Sydney-Coffs Harbour								
QantasLink	142	127	92	72.4	86	67.7	15	10.6
Tigerair Australia	20	17	12	70.6	15	88.2	3	15.0
Virgin Australia	30	30	21	70.0	21	70.0	0	0.0
All Airlines	192	174	125	71.8	122	70.1	18	9.4
Sydney-Darwin								
Jetstar	15	15	10	66.7	11	73.3	0	0.0
Qantas	37	37	21	56.8	21	56.8	0	0.0
Virgin Australia	28	28	10	35.7	22	78.6	0	0.0
All Airlines	80	80	41	51.3	54	67.5	0	0.0
Sydney-Dubbo								
QantasLink	121	119	69	58.0	73	61.3	2	1.7
Regional Express	129	128	101	78.9	102	79.7	1	0.8
All Airlines	250	247	170	68.8	175	70.9	3	1.2
Sydney-Gold Coast								
Jetstar	266	258	191	74.0	192	74.4	8	3.0
Qantas	62	60	41	68.3	38	63.3	2	3.2
QantasLink	69	68	44	64.7	47	69.1	1	1.4
Tigerair Australia	85	84	60	71.4	61	72.6	1	1.2
Virgin Australia	258	255	179	70.2	193	75.7	3	1.2
All Airlines	740	725	515	71.0	531	73.2	15	2.0
Sydney-Hamilton Island								
Jetstar	19	19	17	89.5	18	94.7	0	0.0
Qantas	9	9	7	77.8	8	88.9	0	0.0
QantasLink	21	20	15	75.0	13	65.0	1	4.8
Virgin Australia	29	29	22	75.9	22	75.9	0	0.0
All Airlines	78	77	61	79.2	61	79.2	1	1.3
Sydney-Hobart								
Jetstar	100	99	77	77.8	78	78.8	1	1.0
QantasLink	80	79	48	60.8	53	67.1	1	1.3
Virgin Australia	69	69	52	75.4	55	79.7	0	0.0
All Airlines	249	247	177	71.7	186	75.3	2	0.8

	<i>Sectors</i>		<i>Arrivals On Time</i>		<i>Departures On Time</i>		<i>Cancellations</i>	
	<i>Sched.</i>	<i>Flown</i>	<i>No.</i>	<i>%</i>	<i>No.</i>	<i>%</i>	<i>No.</i>	<i>%</i>
Sydney-Launceston								
Jetstar	47	47	36	76.6	37	78.7	0	0.0
Virgin Australia	30	30	20	66.7	20	66.7	0	0.0
All Airlines	77	77	56	72.7	57	74.0	0	0.0
Sydney-Melbourne								
Jetstar	383	355	197	55.5	204	57.5	28	7.3
Qantas	1 052	965	567	58.8	675	69.9	87	8.3
Tigerair Australia	238	226	119	52.7	133	58.8	12	5.0
Virgin Australia	752	707	445	62.9	533	75.4	45	6.0
All Airlines	2 425	2 253	1 328	58.9	1 545	68.6	172	7.1
Sydney-Perth								
Jetstar	26	26	18	69.2	16	61.5	0	0.0
Qantas	205	202	138	68.3	134	66.3	3	1.5
Tigerair Australia	25	25	18	72.0	16	64.0	0	0.0
Virgin Australia	115	115	76	66.1	70	60.9	0	0.0
All Airlines	371	368	250	67.9	236	64.1	3	0.8
Sydney-Port Macquarie								
QantasLink	118	104	76	73.1	71	68.3	14	11.9
Virgin Australia	54	47	28	59.6	28	59.6	7	13.0
All Airlines	172	151	104	68.9	99	65.6	21	12.2
Sydney-Proserpine								
Jetstar	13	13	11	84.6	11	84.6	0	0.0
Tigerair Australia	17	17	16	94.1	13	76.5	0	0.0
All Airlines	30	30	27	90.0	24	80.0	0	0.0
Sydney-Sunshine Coast								
Jetstar	106	104	78	75.0	78	75.0	2	1.9
QantasLink	55	55	35	63.6	39	70.9	0	0.0
Virgin Australia	52	50	36	72.0	39	78.0	2	3.8
All Airlines	213	209	149	71.3	156	74.6	4	1.9
Sydney-Tamworth								
QantasLink	149	148	104	70.3	110	74.3	1	0.7
Virgin Australia	47	47	30	63.8	34	72.3	0	0.0
All Airlines	196	195	134	68.7	144	73.8	1	0.5
Sydney-Townsville								
Jetstar	22	22	14	63.6	13	59.1	0	0.0
Virgin Australia	28	28	19	67.9	24	85.7	0	0.0
All Airlines	50	50	33	66.0	37	74.0	0	0.0
Sydney-Wagga Wagga								
QantasLink	102	102	70	68.6	76	74.5	0	0.0
Regional Express	131	131	111	84.7	114	87.0	0	0.0
All Airlines	233	233	181	77.7	190	81.5	0	0.0
Tamworth-Sydney								
QantasLink	142	140	98	70.0	104	74.3	2	1.4
Virgin Australia	48	48	39	81.3	40	83.3	0	0.0
All Airlines	190	188	137	72.9	144	76.6	2	1.1
Townsville-Brisbane								
Jetstar	41	41	36	87.8	32	78.0	0	0.0
Qantas	37	37	32	86.5	29	78.4	0	0.0
QantasLink	123	121	102	84.3	99	81.8	2	1.6
Virgin Australia	142	142	128	90.1	123	86.6	0	0.0
All Airlines	343	341	298	87.4	283	83.0	2	0.6

	<i>Sectors</i>		<i>Arrivals On Time</i>		<i>Departures On Time</i>		<i>Cancellations</i>	
	<i>Sched.</i>	<i>Flown</i>	<i>No.</i>	<i>%</i>	<i>No.</i>	<i>%</i>	<i>No.</i>	<i>%</i>
Townsville-Cairns								
QantasLink	133	131	123	93.9	117	89.3	2	1.5
Regional Express	14	14	11	78.6	11	78.6	0	0.0
All Airlines	147	145	134	92.4	128	88.3	2	1.4
Townsville-Sydney								
Jetstar	22	22	13	59.1	11	50.0	0	0.0
Virgin Australia	28	28	20	71.4	16	57.1	0	0.0
All Airlines	50	50	33	66.0	27	54.0	0	0.0
Wagga Wagga-Sydney								
QantasLink	103	103	80	77.7	78	75.7	0	0.0
Regional Express	132	132	98	74.2	109	82.6	0	0.0
All Airlines	235	235	178	75.7	187	79.6	0	0.0

Airports

On time performance is reported for all routes where the passenger load averages over 8000 passengers per month, and where two or more airlines operate in competition. The following data reports by airport against flights operated on those routes only. This month, 8 major city airports and 31 regional city airports are covered.

Airport	Arrivals			Departures		
	Sectors Flown	On Time No.	%	Sectors Flown	On Time No.	%
Adelaide						
Jetstar	278	197	70.9	277	205	74.0
Qantas	816	571	70.0	817	624	76.4
QantasLink	103	96	93.2	103	96	93.2
Regional Express	209	193	92.3	211	203	96.2
Tigerair Australia	127	88	69.3	127	80	63.0
Virgin Australia	618	444	71.8	620	517	83.4
Virgin Australia Regional Airlines	60	46	76.7	59	40	67.8
All Airlines	2 211	1 635	73.9	2 214	1 765	79.7
Relates to services to and from Alice Springs, Brisbane, Canberra, Gold Coast, Melbourne, Perth, Port Lincoln and Sydney.						
Albury						
QantasLink	104	72	69.2	104	76	73.1
Regional Express	104	82	78.8	103	89	86.4
Virgin Australia	54	36	66.7	54	32	59.3
All Airlines	262	190	72.5	261	197	75.5
Relates to services to and from Sydney only.						
Alice Springs						
Qantas	30	23	76.7	30	17	56.7
QantasLink	48	31	64.6	47	44	93.6
Virgin Australia Regional Airlines	42	32	76.2	42	34	81.0
All Airlines	120	86	71.7	119	95	79.8
Relates to services to and from Adelaide and Darwin.						
Armidale						
QantasLink	114	55	48.2	114	58	50.9
Regional Express	68	52	76.5	71	50	70.4
All Airlines	182	107	58.8	185	108	58.4
Relates to services to and from Sydney only.						
Ayers Rock						
Jetstar	25	18	72.0	25	15	60.0
Virgin Australia	30	27	90.0	30	24	80.0
All Airlines	55	45	81.8	55	39	70.9
Relates to services to and from Sydney only.						
Ballina						
Jetstar	68	52	76.5	68	46	67.6
Regional Express	24	16	66.7	25	21	84.0
Virgin Australia	35	29	82.9	35	20	57.1
All Airlines	127	97	76.4	128	87	68.0
Relates to services to and from Sydney only.						

Airport	Arrivals			Departures		
	Sectors	On Time		Sectors	On Time	
	Flown	No.	%	Flown	No.	%
Brisbane						
Jetstar	601	470	78.2	600	458	76.3
Qantas	1 357	1 024	75.5	1 355	1 068	78.8
QantasLink	1 261	1 052	83.4	1 262	1 075	85.2
Tigerair Australia	335	244	72.8	335	243	72.5
Virgin Australia	2 073	1 716	82.8	2 077	1 710	82.3
All Airlines	5 627	4 506	80.1	5 629	4 554	80.9

Relates to services to and from Adelaide, Bundaberg, Cairns, Canberra, Darwin, Emerald, Gladstone, Hamilton Island, Hobart, Mackay, Melbourne, Mount Isa, Newcastle, Perth, Proserpine, Rockhampton, Sydney and Townsville.

Broome

Qantas	7	4	57.1	7	4	57.1
QantasLink	78	69	88.5	76	58	76.3
Virgin Australia	7	6	85.7	7	6	85.7
Virgin Australia Regional Airlines	47	43	91.5	47	39	83.0
All Airlines	139	122	87.8	137	107	78.1

Relates to services to and from Perth only.

Bundaberg

QantasLink	120	109	90.8	120	107	89.2
Virgin Australia	30	26	86.7	30	27	90.0
All Airlines	150	135	90.0	150	134	89.3

Relates to services to and from Brisbane only.

Cairns

Jetstar	245	188	76.7	246	197	80.1
Qantas	125	94	75.2	125	82	65.6
QantasLink	253	221	87.4	251	210	83.7
Regional Express	14	11	78.6	13	10	76.9
Tigerair Australia	99	71	71.7	99	58	58.6
Virgin Australia	242	178	73.6	243	191	78.6
All Airlines	978	763	78.0	977	748	76.6

Relates to services to and from Brisbane, Melbourne, Sydney and Townsville.

Canberra

Qantas	278	224	80.6	275	229	83.3
QantasLink	663	485	73.2	660	486	73.6
Tigerair Australia	67	54	80.6	67	54	80.6
Virgin Australia	505	369	73.1	505	407	80.6
All Airlines	1 513	1 132	74.8	1 507	1 176	78.0

Relates to services to and from Adelaide, Brisbane, Melbourne and Sydney.

Coffs Harbour

QantasLink	127	92	72.4	128	96	75.0
Tigerair Australia	17	12	70.6	17	14	82.4
Virgin Australia	30	21	70.0	30	16	53.3
All Airlines	174	125	71.8	175	126	72.0

Relates to services to and from Sydney only.

Airport	Arrivals			Departures		
	Sectors Flown	On Time		Sectors Flown	On Time	
		No.	%		No.	%
Darwin						
Jetstar	50	38	76.0	50	35	70.0
Qantas	127	92	72.4	127	75	59.1
QantasLink	47	32	68.1	48	38	79.2
Tigerair Australia	13	11	84.6	13	8	61.5
Virgin Australia	109	54	49.5	109	78	71.6
Virgin Australia Regional Airlines	30	23	76.7	30	25	83.3
All Airlines	376	250	66.5	377	259	68.7
Relates to services to and from Alice Springs, Brisbane, Melbourne, Perth and Sydney.						
Dubbo						
QantasLink	119	69	58.0	119	82	68.9
Regional Express	128	101	78.9	125	94	75.2
All Airlines	247	170	68.8	244	176	72.1
Relates to services to and from Sydney only.						
Emerald						
QantasLink	123	101	82.1	122	98	80.3
Virgin Australia	46	39	84.8	46	43	93.5
All Airlines	169	140	82.8	168	141	83.9
Relates to services to and from Brisbane only.						
Gladstone						
QantasLink	137	111	81.0	137	107	78.1
Virgin Australia	72	65	90.3	72	68	94.4
All Airlines	209	176	84.2	209	175	83.7
Relates to services to and from Brisbane only.						
Gold Coast						
Jetstar	444	304	68.5	443	301	67.9
Qantas	100	73	73.0	98	55	56.1
QantasLink	68	44	64.7	69	46	66.7
Tigerair Australia	164	114	69.5	164	94	57.3
Virgin Australia	475	347	73.1	474	293	61.8
All Airlines	1 251	882	70.5	1 248	789	63.2
Relates to services to and from Adelaide, Melbourne and Sydney.						
Hamilton Island						
Jetstar	19	17	89.5	19	14	73.7
Qantas	9	7	77.8	9	9	100.0
QantasLink	50	42	84.0	50	41	82.0
Virgin Australia	59	47	79.7	60	43	71.7
All Airlines	137	113	82.5	138	107	77.5
Relates to services to and from Brisbane and Sydney.						
Hobart						
Jetstar	300	224	74.7	298	193	64.8
Qantas	115	80	69.6	115	81	70.4
QantasLink	79	48	60.8	78	59	75.6
Tigerair Australia	44	35	79.5	43	24	55.8
Virgin Australia	248	191	77.0	248	187	75.4
All Airlines	786	578	73.5	782	544	69.6
Relates to services to and from Brisbane, Melbourne and Sydney.						

Airport	Arrivals			Departures		
	Sectors Flown	On Time		Sectors Flown	On Time	
		No.	%		No.	%
Kalgoorlie						
Qantas	13	12	92.3	13	13	100.0
QantasLink	60	53	88.3	60	51	85.0
Virgin Australia	15	15	100.0	15	13	86.7
Virgin Australia Regional Airlines	56	51	91.1	54	47	87.0
All Airlines	144	131	91.0	142	124	87.3
Relates to services to and from Perth only.						
Karratha						
Qantas	70	63	90.0	69	62	89.9
QantasLink	105	95	90.5	104	98	94.2
Virgin Australia	1	1	100.0	1	1	100.0
Virgin Australia Regional Airlines	66	54	81.8	66	51	77.3
All Airlines	242	213	88.0	240	212	88.3
Relates to services to and from Perth only.						
Launceston						
Jetstar	178	128	71.9	178	114	64.0
QantasLink	110	83	75.5	110	82	74.5
Virgin Australia	125	93	74.4	125	105	84.0
All Airlines	413	304	73.6	413	301	72.9
Relates to services to and from Melbourne and Sydney.						
Mackay						
Jetstar	30	20	66.7	30	15	50.0
QantasLink	138	121	87.7	135	121	89.6
Virgin Australia	134	113	84.3	134	124	92.5
All Airlines	302	254	84.1	299	260	87.0
Relates to services to and from Brisbane only.						
Melbourne						
Jetstar	1 343	824	61.4	1 351	884	65.4
Qantas	2 318	1 502	64.8	2 319	1 697	73.2
QantasLink	240	156	65.0	240	179	74.6
Regional Express	84	58	69.0	84	65	77.4
Tigerair Australia	666	396	59.5	665	504	75.8
Virgin Australia	2 249	1 516	67.4	2 246	1 772	78.9
Virgin Australia Regional Airlines	12	10	83.3	12	8	66.7
All Airlines	6 912	4 462	64.6	6 917	5 109	73.9
Relates to services to and from Adelaide, Brisbane, Cairns, Canberra, Darwin, Gold Coast, Hobart, Launceston, Mildura, Newcastle, Perth, Sunshine Coast and Sydney.						
Mildura						
QantasLink	88	65	73.9	87	61	70.1
Regional Express	84	59	70.2	84	60	71.4
Virgin Australia	30	25	83.3	30	26	86.7
All Airlines	202	149	73.8	201	147	73.1
Relates to services to and from Melbourne only.						
Mount Isa						
QantasLink	55	46	83.6	55	45	81.8
Virgin Australia	16	15	93.8	13	12	92.3
All Airlines	71	61	85.9	68	57	83.8
Relates to services to and from Brisbane only.						

Airport	Arrivals			Departures		
	Sectors	On Time		Sectors	On Time	
	Flown	No.	%	Flown	No.	%
Newcastle						
Jetstar	168	99	58.9	167	132	79.0
QantasLink	87	79	90.8	88	78	88.6
Virgin Australia	121	100	82.6	122	102	83.6
All Airlines	376	278	73.9	377	312	82.8
Relates to services to and from Brisbane and Melbourne.						
Newman						
Qantas	44	41	93.2	43	38	88.4
QantasLink	88	74	84.1	86	76	88.4
Virgin Australia	12	11	91.7	12	10	83.3
Virgin Australia Regional Airlines	25	22	88.0	24	19	79.2
All Airlines	169	148	87.6	165	143	86.7
Relates to services to and from Perth only.						
Perth						
Jetstar	97	84	86.6	94	70	74.5
Qantas	854	648	75.9	857	684	79.8
QantasLink	426	366	85.9	433	385	88.9
Tigerair Australia	79	60	75.9	79	46	58.2
Virgin Australia	478	336	70.3	478	422	88.3
Virgin Australia Regional Airlines	266	215	80.8	270	242	89.6
All Airlines	2 200	1 709	77.7	2 211	1 849	83.6
Relates to services to and from Adelaide, Brisbane, Broome, Darwin, Kalgoorlie, Karratha, Melbourne, Newman, Port Hedland and Sydney.						
Port Hedland						
Qantas	33	31	93.9	33	28	84.8
QantasLink	102	93	91.2	100	84	84.0
Virgin Australia	12	12	100.0	12	9	75.0
Virgin Australia Regional Airlines	40	35	87.5	40	35	87.5
All Airlines	187	171	91.4	185	156	84.3
Relates to services to and from Perth only.						
Port Lincoln						
QantasLink	98	92	93.9	98	92	93.9
Regional Express	211	196	92.9	209	193	92.3
All Airlines	309	288	93.2	307	285	92.8
Relates to services to and from Adelaide only.						
Port Macquarie						
QantasLink	104	76	73.1	103	77	74.8
Virgin Australia	47	28	59.6	47	20	42.6
All Airlines	151	104	68.9	150	97	64.7
Relates to services to and from Sydney only.						
Proserpine						
Jetstar	43	40	93.0	43	38	88.4
Tigerair Australia	17	16	94.1	17	12	70.6
Virgin Australia	42	34	81.0	42	33	78.6
All Airlines	102	90	88.2	102	83	81.4
Relates to services to and from Brisbane and Sydney.						

Airport	Arrivals			Departures		
	Sectors Flown	On Time		Sectors Flown	On Time	
		No.	%		No.	%
Rockhampton						
QantasLink	173	143	82.7	179	144	80.4
Virgin Australia	131	100	76.3	132	106	80.3
All Airlines	304	243	79.9	311	250	80.4
Relates to services to and from Brisbane only.						
Sunshine Coast						
Jetstar	183	146	79.8	183	105	57.4
QantasLink	55	35	63.6	56	38	67.9
Virgin Australia	120	98	81.7	120	89	74.2
All Airlines	358	279	77.9	359	232	64.6
Relates to services to and from Melbourne and Sydney.						
Sydney						
Jetstar	1 385	925	66.8	1 385	972	70.2
Qantas	2 156	1 491	69.2	2 160	1 519	70.3
QantasLink	1 510	1 063	70.4	1 518	1 055	69.5
Regional Express	456	330	72.4	455	371	81.5
Tigerair Australia	552	332	60.1	554	371	67.0
Virgin Australia	2 528	1 839	72.7	2 523	1 853	73.4
All Airlines	8 587	5 980	69.6	8 595	6 141	71.4
Relates to services to and from Adelaide, Albury, Armidale, Ayers Rock, Ballina, Brisbane, Cairns, Canberra, Coffs Harbour, Darwin, Dubbo, Gold Coast, Hamilton Island, Hobart, Launceston, Melbourne, Perth, Port Macquarie, Proserpine, Sunshine Coast, Tamworth, Townsville and Wagga Wagga.						
Tamworth						
QantasLink	148	104	70.3	140	104	74.3
Virgin Australia	47	30	63.8	48	40	83.3
All Airlines	195	134	68.7	188	144	76.6
Relates to services to and from Sydney only.						
Townsville						
Jetstar	63	52	82.5	63	43	68.3
Qantas	37	32	86.5	37	29	78.4
QantasLink	252	217	86.1	252	216	85.7
Regional Express	13	10	76.9	14	11	78.6
Virgin Australia	169	131	77.5	170	139	81.8
All Airlines	534	442	82.8	536	438	81.7
Relates to services to and from Brisbane, Cairns and Sydney.						
Wagga Wagga						
QantasLink	102	70	68.6	103	78	75.7
Regional Express	131	111	84.7	132	109	82.6
All Airlines	233	181	77.7	235	187	79.6
Relates to services to and from Sydney only.						

Definitions

On time arrival	A flight arrival is counted as "on time" if it arrived at the gate before 15 minutes after the scheduled arrival time shown in the carriers' schedule. Neither diverted nor cancelled flights count as on time.
On time departure	A flight departure is counted as "on time" if it departs the gate before 15 minutes after the scheduled departure time shown in the carriers' schedule.
Cancellation	A flight removed from service within 7 days of scheduled departure is regarded as a cancellation.
On time departure percentage	The percentage of on time departures is measured against the number of departures <i>operated</i> on any particular sector.
On time arrival percentage	The percentage of on time arrivals is measured against the number of arrivals <i>operated</i> on any particular sector.
Cancellation percentage	The percentage of cancellations is measured against the number of services <i>scheduled</i> on any particular sector.
