



Australian Government

Department of Infrastructure, Regional Development and Cities

Bureau of Infrastructure, Transport and Regional Economics

STATISTICAL REPORT



Aviation

Domestic airline on time performance
April 2019

© Commonwealth of Australia 2019

ISSN: 1832-0759

Ownership of intellectual property rights in this publication

Unless otherwise noted, copyright (and any other intellectual property rights, if any) in this publication is owned by the Commonwealth of Australia (referred to below as the Commonwealth).

Disclaimer

The material contained in this publication is made available on the understanding that the Commonwealth is not providing professional advice, and that users exercise their own skill and care with respect to its use, and seek independent advice if necessary.

The Commonwealth makes no representations or warranties as to the contents or accuracy of the information contained in this publication. To the extent permitted by law, the Commonwealth disclaims liability to any person or organisation in respect of anything done, or omitted to be done, in reliance upon information contained in this publication.

Creative Commons licence

With the exception of (a) the Coat of Arms; and (b) the Department of Infrastructure, Regional Development and Cities' photos and graphics, copyright in this publication is licensed under a Creative Commons Attribution 3.0 Australia Licence.

Creative Commons Attribution 3.0 Australia Licence is a standard form licence agreement that allows you to copy, communicate and adapt this publication provided that you attribute the work to the Commonwealth and abide by the other licence terms. A summary of the licence terms is available from <http://creativecommons.org/licenses/by/3.0/au/deed.en>. The full licence terms are available from <http://creativecommons.org/licenses/by/3.0/au/legalcode>.

Use of the Coat of Arms

The Department of the Prime Minister and Cabinet sets the terms under which the Coat of Arms is used. Please refer to the Department's Commonwealth Coat of Arms and Government branding web page <http://www.dpmc.gov.au/guidelines/index.cfm#brand> and, in particular, the Guidelines on the use of the Commonwealth Coat of Arms publication.

An appropriate citation for this report is:

Bureau of Infrastructure, Transport and Regional Economics (BITRE), 2019, Domestic airline on time performance, Statistical Report, BITRE, Canberra ACT.

Contact us

This publication is available in PDF format. All other rights are reserved, including in relation to any Departmental logos or trade marks which may exist. For enquiries regarding the licence and any use of this publication, please contact:

Bureau of Infrastructure, Transport and Regional Economics (BITRE)
Department of Infrastructure, Regional Development and Cities
GPO Box 501, Canberra ACT 2601, Australia
Telephone: (international) +61 2 6274 7210
Fax: (international) +61 2 6274 6855
Email: bitre@infrastructure.gov.au
Website: www.bitre.gov.au

Inquiries

Should you require additional information about the statistics contained in this publication:

Telephone (02) 6274 7790 or Facsimile (02) 6274 7727

Electronic mail: AVSTATS@infrastructure.gov.au

Web site: <http://www.bitre.gov.au/statistics/aviation/otphome.aspx>

Foreword

The Bureau of Infrastructure, Transport and Regional Economics (BITRE) monitors the punctuality and reliability of major domestic airlines operating between Australian airports. The purpose of this is to allow for evaluation of overall industry and individual airline performance, so that consumers of air travel can make informed decisions.

The following domestic airlines currently report this information monthly to the BITRE: Jetstar, Qantas, QantasLink, Regional Express, Tigerair Australia, Virgin Australia and Virgin Australia Regional Airlines. Data has been gathered since November 2003, although some airlines commenced reporting at a later date, including Jetstar which first reported in May 2004, MacAir in July 2005, Tigerair Australia in April 2008 and Virgin Australia Regional Airlines in May 2013. MacAir ceased operations in February 2009 and data was not received for December 2008 onwards. Virgin Blue was rebranded as Virgin Australia in May 2011 and Tiger Airways was rebranded as Tigerair Australia in July 2013 and time series data in Microsoft Excel spreadsheet format on the BITRE website have been revised to reflect these changes. Services operated by Skywest on behalf of Virgin Australia using ATR/F100 aircraft commenced in November 2011 and were shown separately as Virgin Australia – ATR/F100 Operations. Virgin Australia Regional Airlines commenced operations in May 2013. It was formed after the acquisition of Skywest by Virgin Australia and represented a combination of operations previously reported under Skywest and Virgin Australia – ATR/F100 Operations. In January 2016, Virgin Australia transferred their ATR fleet from Virgin Australia Regional Airlines to Virgin Australia.

Information presented in this report is for Australian domestic routes for which the passenger load averaged 8 000 or more passengers per month over the previous six months and where two or more airlines operated in competition on those routes. There were 65 routes that met this definition in April 2019. Over time, routes which meet these criteria change as airline networks and traffic levels vary.

Participating airlines report their overall monthly network performance where this is possible.

Total industry figures encompass all services operated by reporting airlines only. These airlines collectively carried over 95 per cent of total domestic passengers (regular public transport only) in 2018.

The method of capturing on time performance varies between airlines utilising different recording systems. Jetstar and Qantas jet aircraft use Aircraft Communication Addressing and Reporting System (ACARS) to electronically measure on time performance. Regional Express, Tigerair Australia, Virgin Australia, Virgin Australia Regional Airlines and the Qantas non-jet fleet record on time performance manually using records from pilots, gate agents and/or ground crews.

After initial data is collected, aggregate reports are audited internally by participating airlines prior to publication.

Reports and detailed time series data in Microsoft Excel spreadsheet format are available from the BITRE website at: <http://www.bitre.gov.au/statistics/aviation/otphome.aspx>.

Contents

	Page
Industry performance	1
Individual routes	10
Airports.....	24
Definitions	30

Industry performance

For April 2019, on time performance over all routes operated by participating airlines (Jetstar, Qantas, QantasLink, Regional Express, Tigerair Australia, Virgin Australia and Virgin Australia Regional Airlines) averaged 82.6 per cent for on time arrivals and 82.9 per cent for on time departures. Cancellations represented 1.5 per cent of all scheduled flights. The equivalent figures for April 2018 were 83.2 per cent for on time arrivals, 83.1 per cent for on time departures and 1.2 per cent for cancellations.

This month's on time arrivals figure was slightly higher than the long term average performance for all routes (82.5 per cent) and the on time departures figure was lower than the long term average (83.8 per cent). The rate of cancellations was the same as the long term average of 1.5 per cent.

Virgin Australia achieved the highest on time arrivals among the major domestic airlines at 83.7 per cent followed by Qantas at 82.5 per cent, Jetstar at 80.6 per cent and Tigerair Australia at 71.3 per cent. Of the regional airlines, Regional Express recorded 86.1 per cent for on time arrivals, followed by QantasLink at 84.0 per cent and Virgin Australia Regional Airlines at 75.2 per cent. The Qantas network (Qantas and QantasLink combined operations) recorded 83.3 per cent for on time arrivals while the Virgin Australia network (Virgin Australia and Virgin Australia Regional Airlines combined operations) recorded 83.1 per cent.

Virgin Australia also achieved the highest level of on time departures among the major domestic airlines for April 2019 at 85.2 per cent, followed by Qantas at 83.2 per cent, Jetstar at 77.5 per cent and Tigerair Australia at 70.3 per cent. Of the regional airlines, Regional Express recorded 88.0 per cent for on time departures, followed by QantasLink at 84.4 per cent and Virgin Australia Regional Airlines at 79.4 per cent. The Qantas network recorded 83.9 per cent for on time departures while the Virgin Australia network recorded 84.8 per cent.

Tigerair Australia recorded the highest percentage of cancellations (2.6 per cent) during the month, followed by Qantas (2.3 per cent), QantasLink (1.5 per cent), Jetstar (1.4 per cent), Virgin Australia (1.3 per cent), Regional Express (0.8 per cent) and Virgin Australia Regional Airlines (0.3 per cent).

Airlines' on time performance varies across the routes they serve. Individual route data by specific airline for 65 routes are shown on pages 10-23.

Of the 65 routes which met the criteria for on time performance reporting in April 2019, the Sydney-Proserpine route had the highest percentage of on time arrivals (96.9 per cent) and the highest percentage of on time departures (also 96.9 per cent). The Ayers Rock-Sydney and Perth-Brisbane routes had the lowest percentage of on time arrivals (both at 66.7 per cent) and the Townsville-Sydney route had the lowest percentage of on time departures (64.2 per cent).

Cancellations were highest on the Sydney-Melbourne route at 5.3 per cent, followed by the Melbourne-Sydney route at 5.1 per cent, the Karratha-Perth route at 4.1 per cent, the

Emerald-Brisbane and Brisbane-Emerald routes at 3.1 per cent and the Kalgoorlie-Perth, Perth-Kalgoorlie and Cairns-Brisbane routes at 3.0 per cent.

Port Lincoln Airport and Alice Springs Airport recorded the highest percentage of on time arrivals (both at 93.1 per cent) and Port Lincoln Airport recorded the highest percentage of on time departures (93.4 per cent). Hamilton Island Airport recorded the lowest percentage of on time arrivals (77.6 per cent) and Hobart Airport recorded the lowest percentage of on time departures (71.8 per cent). These figures only refer to reported routes and do not cover all flights at these airports.

Table 1 On time performance for April 2019 — Total Industry

	<i>Sectors</i>		<i>Arrivals On Time</i>		<i>Departures On Time</i>		<i>Cancellations</i>	
	<i>Scheduled</i>	<i>Flown</i>	<i>No.</i>	<i>%</i>	<i>No.</i>	<i>%</i>	<i>No.</i>	<i>%</i>
Jetstar	8 053	7 941	6 402	80.6	6 156	77.5	112	1.4
Qantas	8 761	8 563	7 065	82.5	7 128	83.2	198	2.3
QantasLink	9 986	9 840	8 262	84.0	8 307	84.4	146	1.5
Regional Express	5 896	5 848	5 034	86.1	5 144	88.0	48	0.8
Tigerair Australia	2 341	2 281	1 627	71.3	1 604	70.3	60	2.6
Virgin Australia	11 524	11 369	9 515	83.7	9 689	85.2	155	1.3
Virgin Australia Regional Airlines	797	795	598	75.2	631	79.4	2	0.3
All Airlines	47 358	46 637	38 503	82.6	38 659	82.9	721	1.5
Qantas - all QF designated services	18 747	18 403	15 327	83.3	15 435	83.9	344	1.8
Virgin Australia - all VA designated services	12 321	12 164	10 113	83.1	10 320	84.8	157	1.3

Total airline network data (including routes not shown in this report).

Airlines' on time performance varies across the routes they serve. Individual route data by specific airline for 65 routes are shown on pages 10-23.

Table 2 Top ten routes for on time performance for April 2019 (participating airlines only)

<i>Arrivals</i>		<i>Departures</i>	
<i>Route</i>	<i>On Time (%)</i>	<i>Route</i>	<i>On Time (%)</i>
Sydney-Proserpine	96.9	Sydney-Proserpine	96.9
Proserpine-Sydney	93.8	Adelaide-Port Lincoln	95.1
Port Lincoln-Adelaide	93.7	Darwin-Alice Springs	94.7
Adelaide-Gold Coast	93.4	Proserpine-Sydney	93.8
Darwin-Alice Springs	93.4	Alice Springs-Darwin	93.5
Canberra-Adelaide	93.3	Adelaide-Gold Coast	93.4
Adelaide-Port Lincoln	93.1	Port Lincoln-Adelaide	93.4
Brisbane-Adelaide	92.8	Townsville-Cairns	92.9
Adelaide-Alice Springs	92.6	Emerald-Brisbane	92.3
Kalgoorlie-Perth	92.5	Perth-Newman	92.3

Table 3 Top ten airports for on time performance for April 2019 (participating airlines and reported routes only)

<i>Arrivals</i>		<i>Departures</i>	
<i>Airport</i>	<i>On Time (%)</i>	<i>Airport</i>	<i>On Time (%)</i>
Port Lincoln	93.1	Port Lincoln	93.4
Alice Springs	93.1	Emerald	92.3
Kalgoorlie	92.5	Alice Springs	91.6
Newman	91.7	Kalgoorlie	90.7
Emerald	90.4	Mount Isa	89.9
Proserpine	89.7	Proserpine	89.6
Gladstone	88.7	Rockhampton	89.2
Mildura	88.3	Newman	89.0
Mount Isa	87.5	Bundaberg	88.5
Adelaide	87.5	Mildura	86.7

Total industry on time performance

Figure 1 On time performance (by month from April 2016)—Total Industry

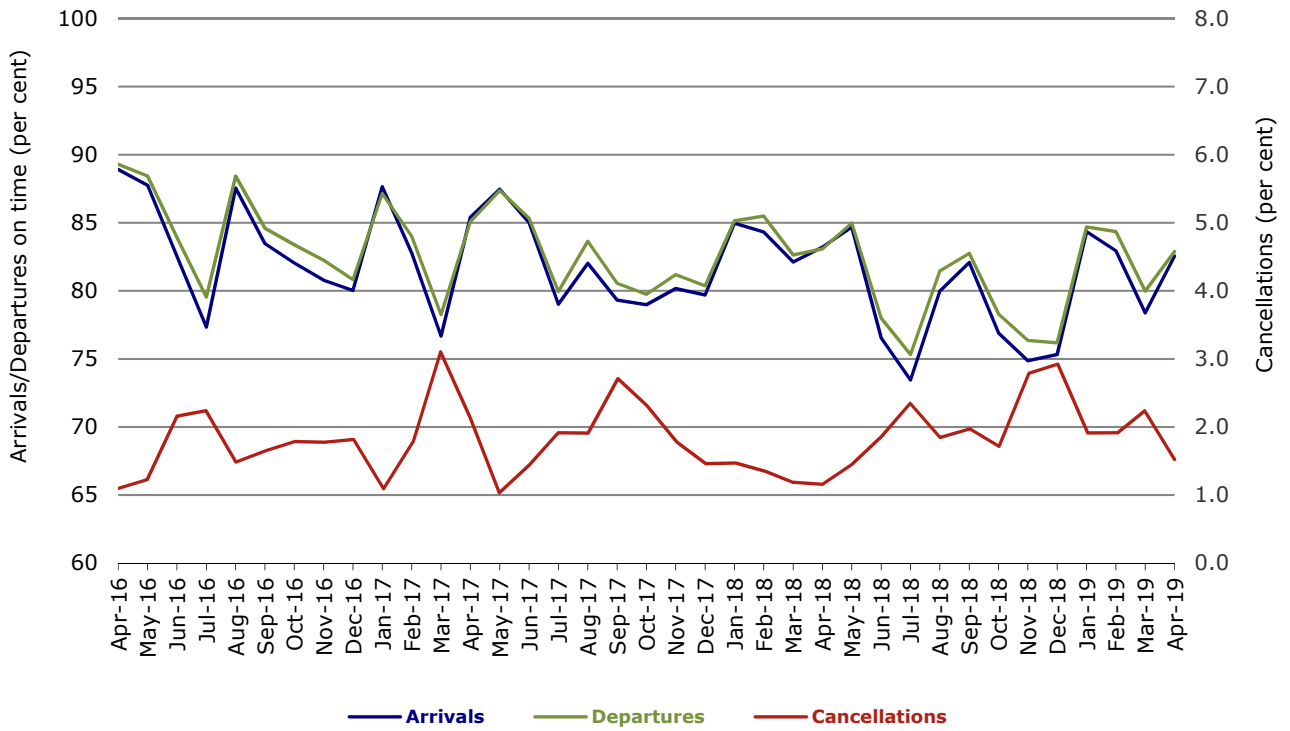


Figure 2 Arrivals on time (by month from April 2018)

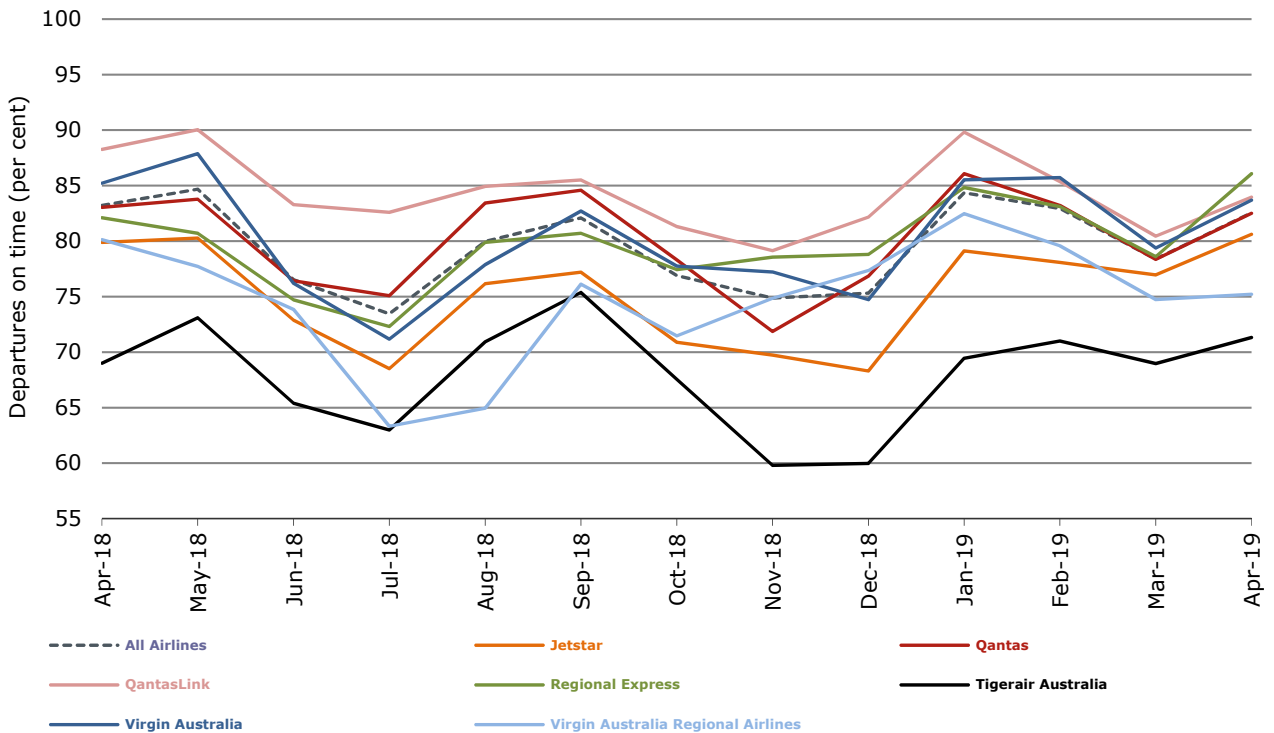


Figure 3 Departures on time (by month from April 2018)

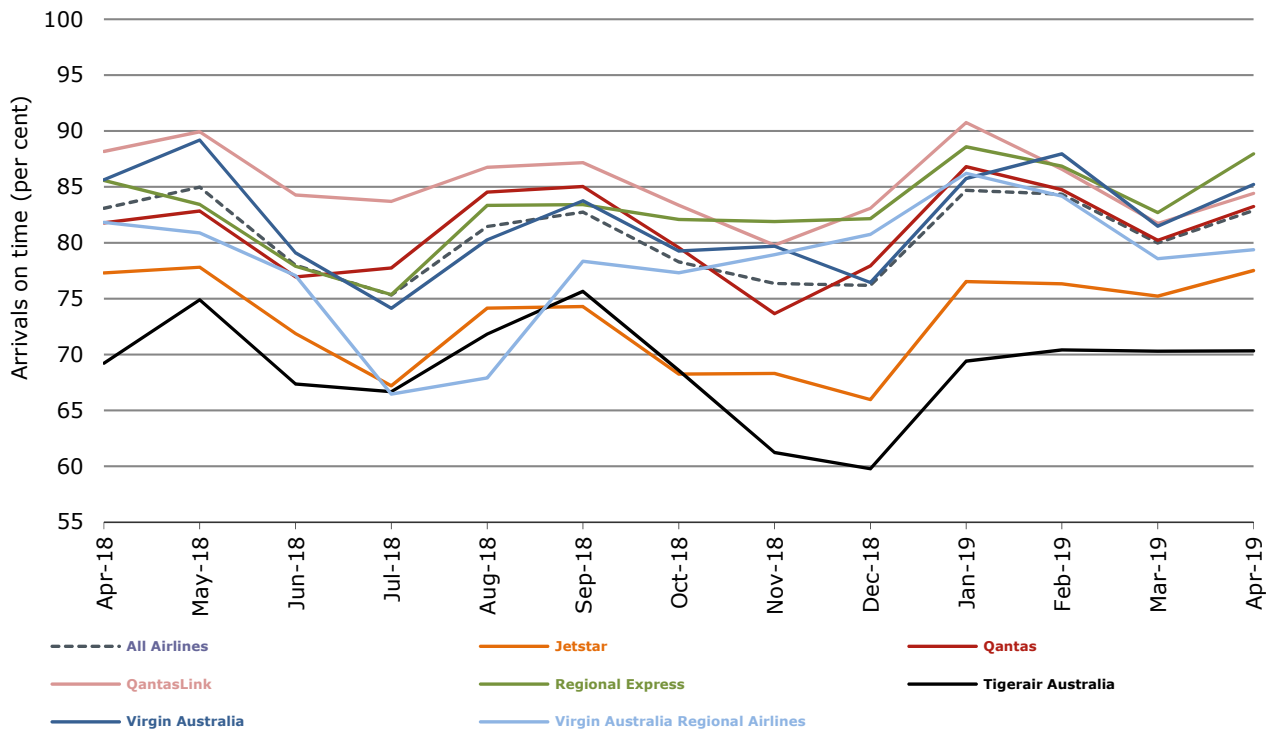
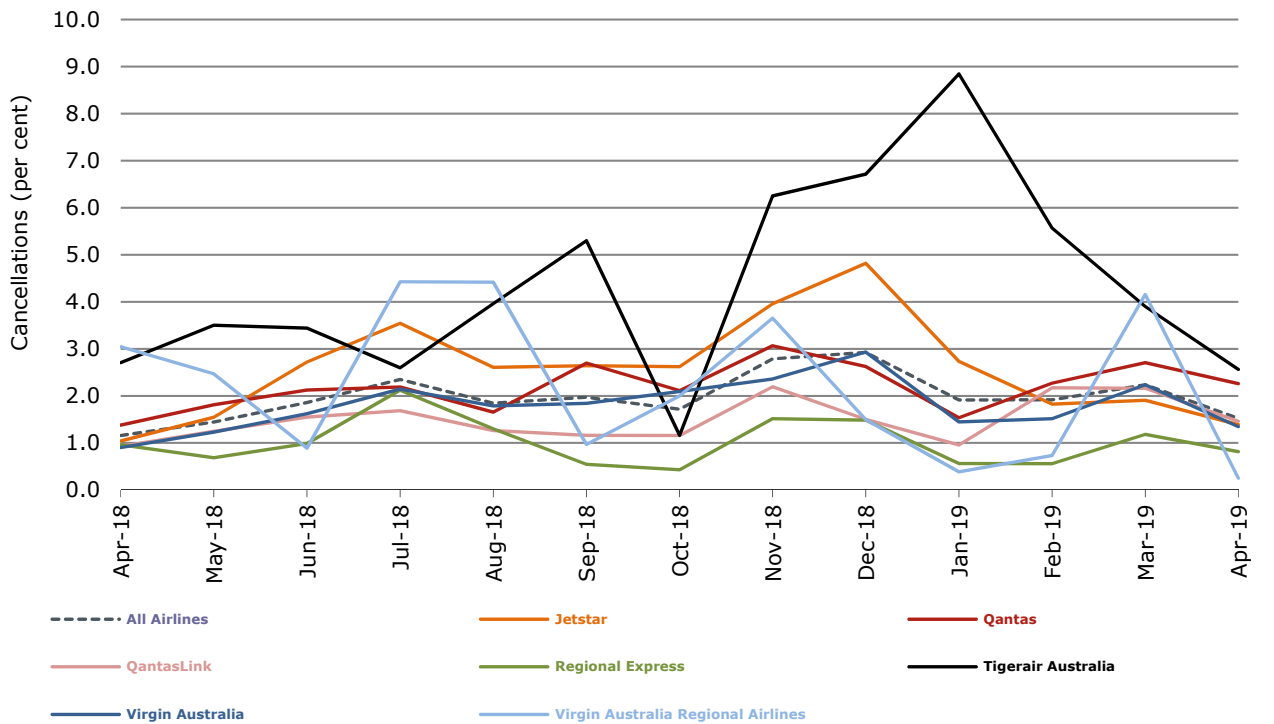


Figure 4 Cancellations (by month from April 2018)



Major domestic airlines on time performance

Figure 5 On time performance (by month from April 2016)—Jetstar

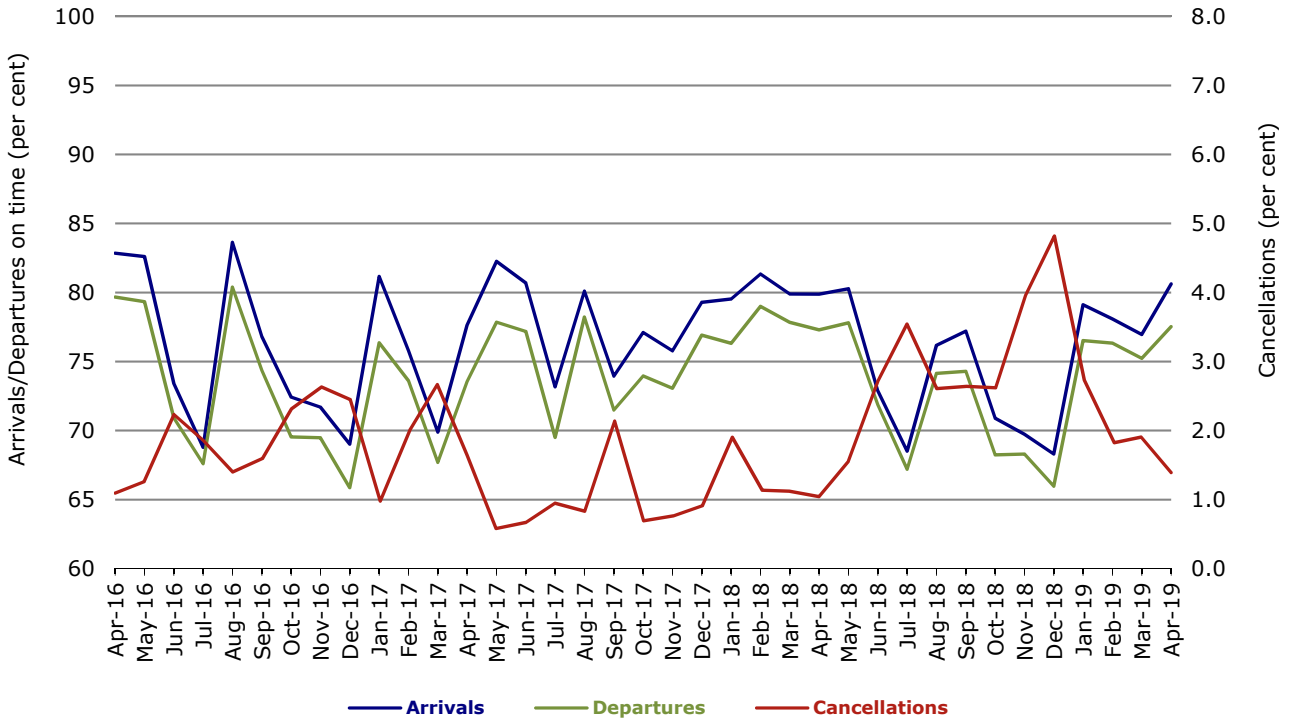


Figure 6 On time performance (by month from April 2016)—Qantas

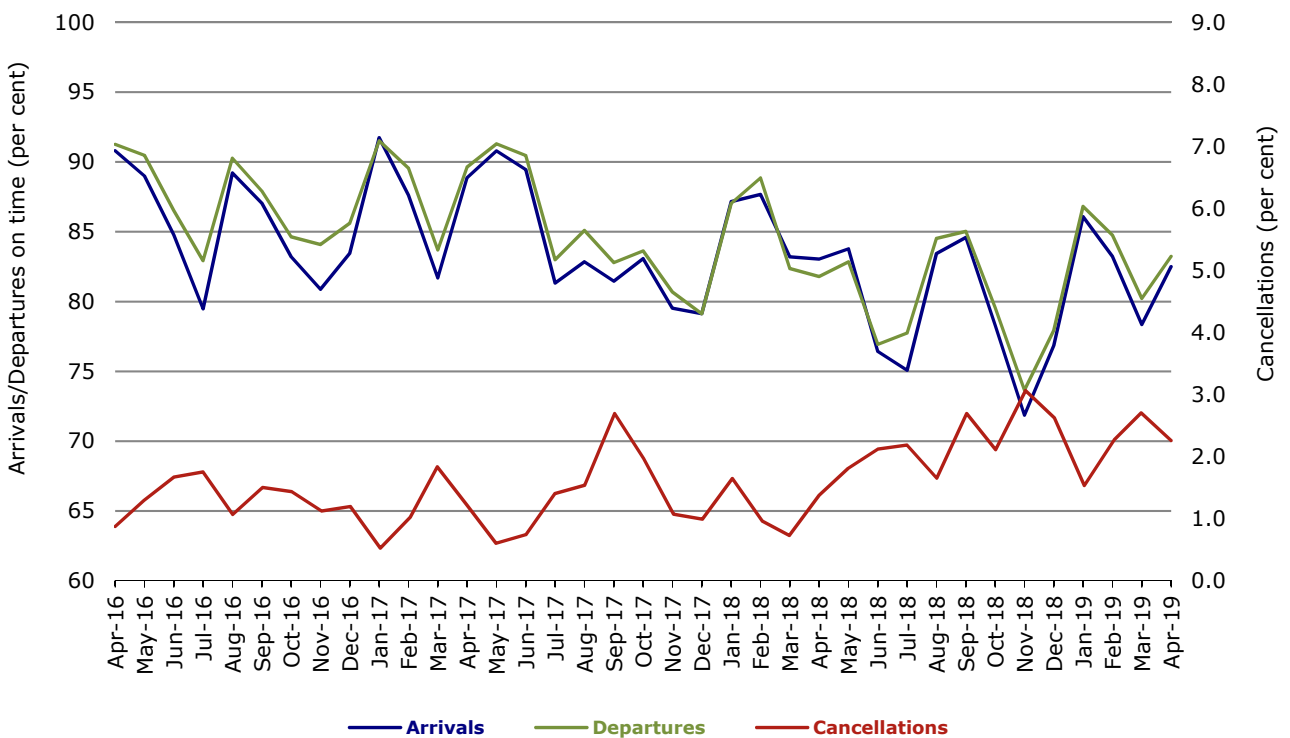


Figure 7 On time performance (by month from April 2016)—Tigerair Australia

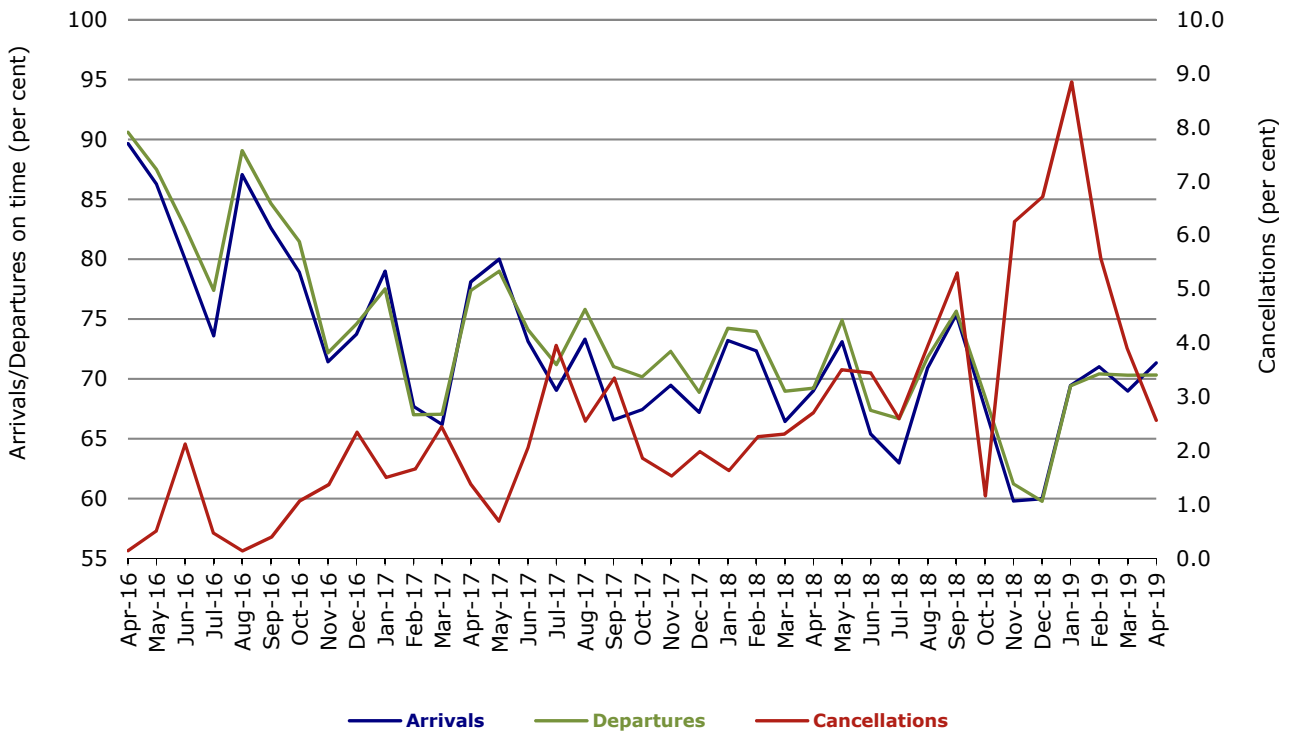
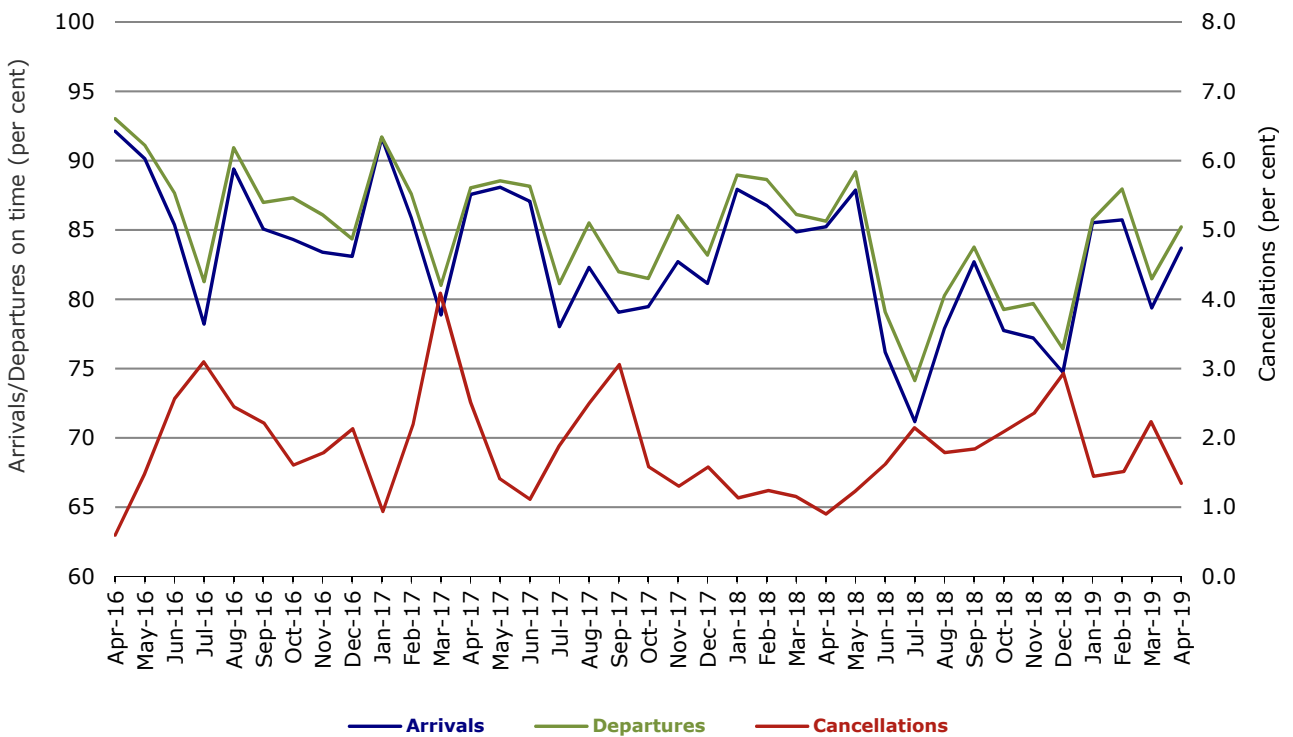


Figure 8 On time performance (by month from April 2016)—Virgin Australia



Major regional airlines on time performance

Figure 9 On time performance (by month from April 2016)—QantasLink

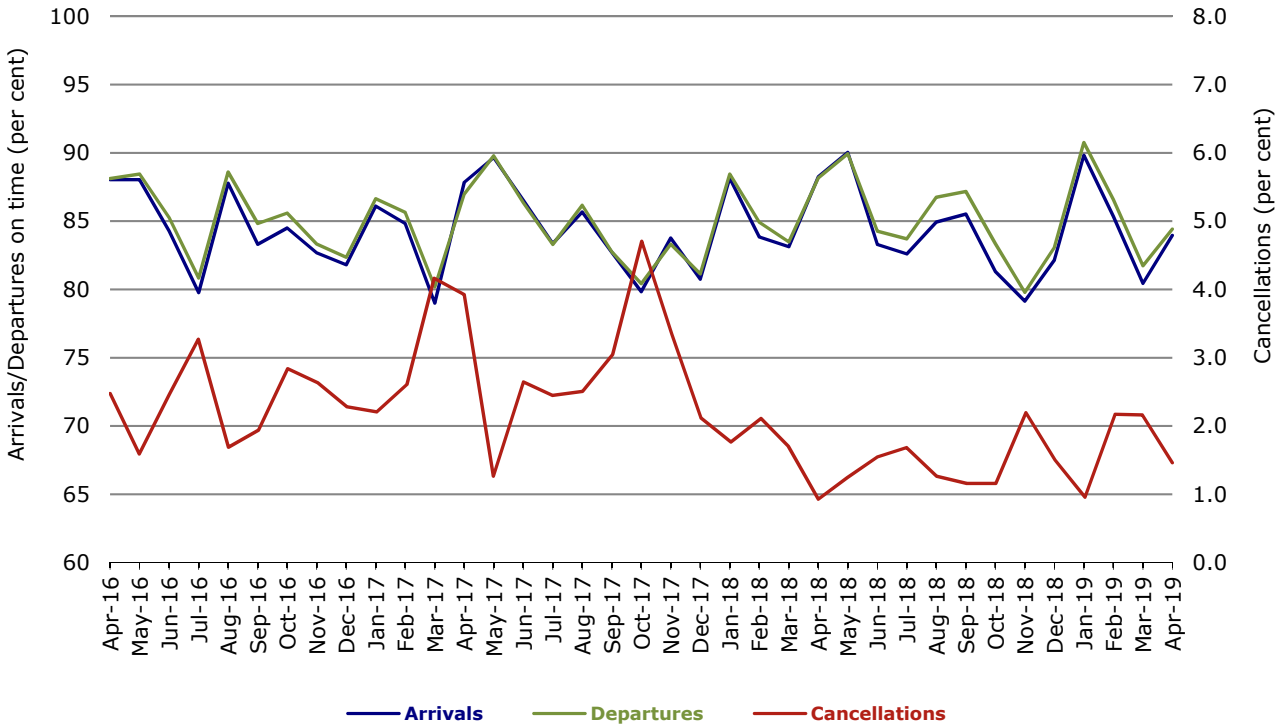


Figure 10 On time performance (by month from April 2016)—Regional Express

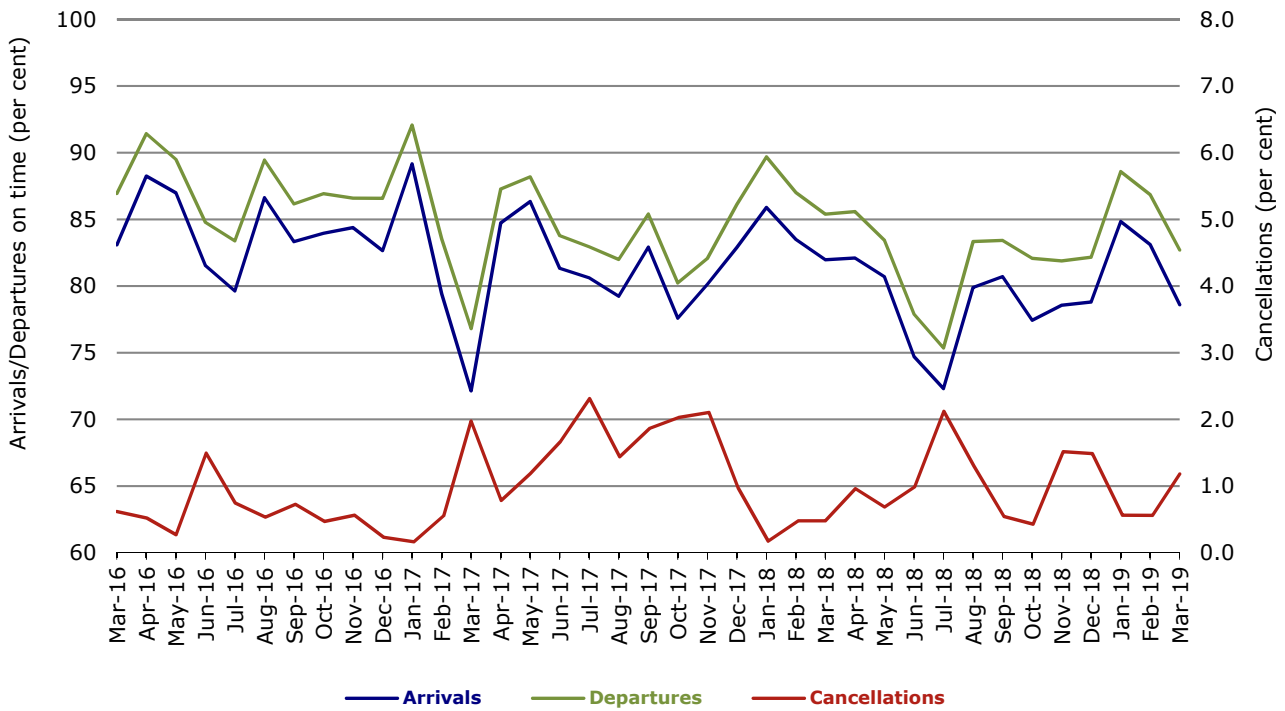
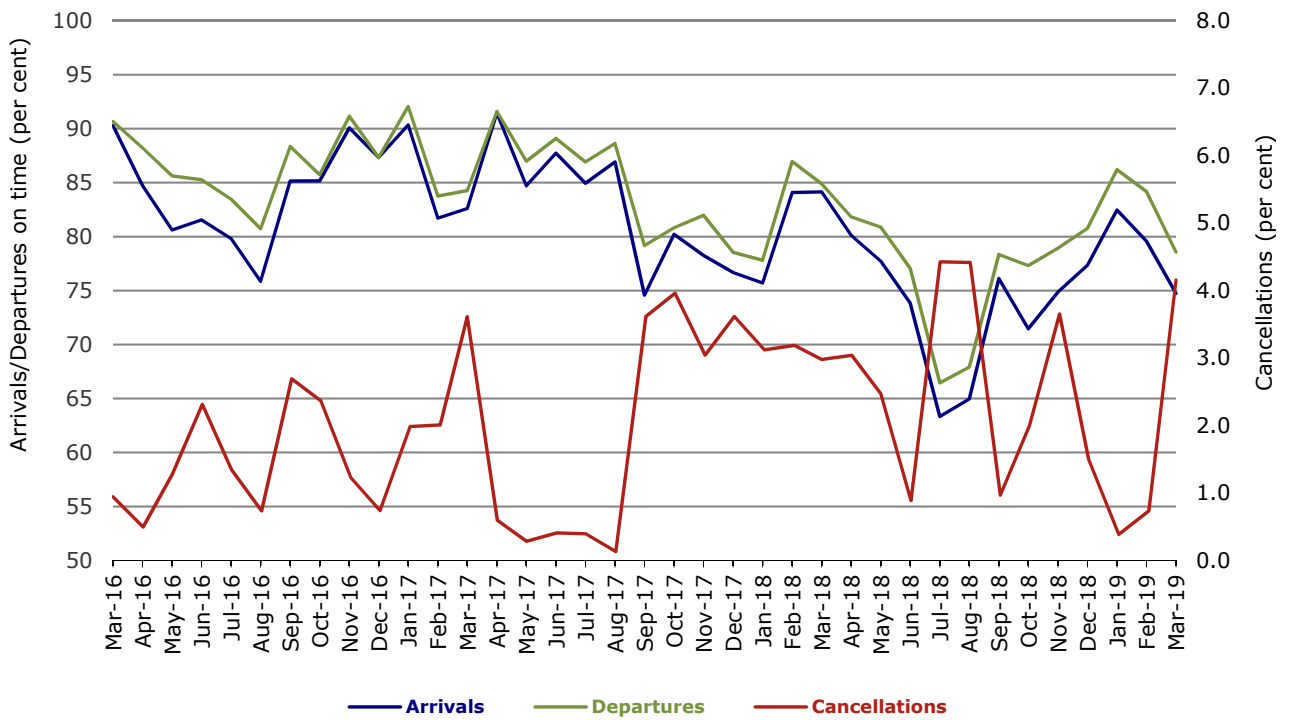


Figure 11 On time performance (by month from April 2016)
Virgin Australia Regional Airlines



Individual routes

On time performance is reported for all routes where the passenger load averages over 8000 passengers per month over the previous six months, and where two or more airlines operate in competition on those routes. There are now 65 routes which meet this definition. Over time, however, routes which meet this definition may change as airline networks and traffic levels vary.

	Sectors		Arrivals On Time		Departures On Time		Cancellations	
	Sched.	Flown	No.	%	No.	%	No.	%
Adelaide-Alice Springs								
Qantas	30	30	28	93.3	25	83.3	0	0.0
Virgin Australia	19	19	18	94.7	18	94.7	0	0.0
Virgin Australia Regional Airlines	5	5	4	80.0	5	100.0	0	0.0
All Airlines	54	54	50	92.6	48	88.9	0	0.0
Adelaide-Brisbane								
Jetstar	27	27	25	92.6	25	92.6	0	0.0
Qantas	103	103	88	85.4	94	91.3	0	0.0
Tigerair Australia	30	30	17	56.7	19	63.3	0	0.0
Virgin Australia	108	108	97	89.8	98	90.7	0	0.0
All Airlines	268	268	227	84.7	236	88.1	0	0.0
Adelaide-Canberra								
Qantas	47	47	40	85.1	39	83.0	0	0.0
QantasLink	3	3	2	66.7	2	66.7	0	0.0
Virgin Australia	25	25	23	92.0	23	92.0	0	0.0
All Airlines	75	75	65	86.7	64	85.3	0	0.0
Adelaide-Gold Coast								
Jetstar	28	28	28	100.0	27	96.4	0	0.0
Virgin Australia	33	33	29	87.9	30	90.9	0	0.0
All Airlines	61	61	57	93.4	57	93.4	0	0.0
Adelaide-Melbourne								
Jetstar	115	112	96	85.7	94	83.9	3	2.6
Qantas	281	279	244	87.5	238	85.3	2	0.7
Tigerair Australia	84	81	52	64.2	56	69.1	3	3.6
Virgin Australia	257	254	221	87.0	224	88.2	3	1.2
Virgin Australia Regional Airlines	4	4	3	75.0	2	50.0	0	0.0
All Airlines	741	730	616	84.4	614	84.1	11	1.5
Adelaide-Perth								
Jetstar	30	30	23	76.7	23	76.7	0	0.0
Qantas	114	114	106	93.0	107	93.9	0	0.0
Virgin Australia	29	29	27	93.1	26	89.7	0	0.0
Virgin Australia Regional Airlines	54	54	32	59.3	32	59.3	0	0.0
All Airlines	227	227	188	82.8	188	82.8	0	0.0
Adelaide-Port Lincoln								
QantasLink	98	98	88	89.8	89	90.8	0	0.0
Regional Express	206	206	195	94.7	200	97.1	0	0.0
All Airlines	304	304	283	93.1	289	95.1	0	0.0
Adelaide-Sydney								
Jetstar	143	141	119	84.4	122	86.5	2	1.4
Qantas	221	219	154	70.3	185	84.5	2	0.9
Tigerair Australia	29	29	17	58.6	21	72.4	0	0.0
Virgin Australia	154	154	112	72.7	131	85.1	0	0.0
All Airlines	547	543	402	74.0	459	84.5	4	0.7

	Sectors		Arrivals On Time		Departures On Time		Cancellations	
	Sched.	Flown	No.	%	No.	%	No.	%
Albury-Sydney								
QantasLink	99	99	77	77.8	79	79.8	0	0.0
Regional Express	96	95	73	76.8	73	76.8	1	1.0
Virgin Australia	55	55	49	89.1	50	90.9	0	0.0
All Airlines	250	249	199	79.9	202	81.1	1	0.4
Alice Springs-Adelaide								
Qantas	30	30	26	86.7	26	86.7	0	0.0
Virgin Australia	19	19	17	89.5	18	94.7	0	0.0
Virgin Australia Regional Airlines	5	5	4	80.0	4	80.0	0	0.0
All Airlines	54	54	47	87.0	48	88.9	0	0.0
Alice Springs-Darwin								
Qantas	58	57	53	93.0	55	96.5	1	1.7
Virgin Australia	15	15	15	100.0	14	93.3	0	0.0
Virgin Australia Regional Airlines	5	5	3	60.0	3	60.0	0	0.0
All Airlines	78	77	71	92.2	72	93.5	1	1.3
Armidale-Sydney								
QantasLink	117	115	86	74.8	85	73.9	2	1.7
Regional Express	64	64	50	78.1	53	82.8	0	0.0
All Airlines	181	179	136	76.0	138	77.1	2	1.1
Ayers Rock-Sydney								
Jetstar	30	30	18	60.0	19	63.3	0	0.0
Virgin Australia	30	30	22	73.3	25	83.3	0	0.0
All Airlines	60	60	40	66.7	44	73.3	0	0.0
Ballina-Sydney								
Jetstar	90	90	73	81.1	64	71.1	0	0.0
Regional Express	20	20	9	45.0	13	65.0	0	0.0
Virgin Australia	42	41	37	90.2	37	90.2	1	2.4
All Airlines	152	151	119	78.8	114	75.5	1	0.7
Brisbane-Adelaide								
Jetstar	27	27	24	88.9	22	81.5	0	0.0
Qantas	103	103	97	94.2	89	86.4	0	0.0
Tigerair Australia	30	30	23	76.7	16	53.3	0	0.0
Virgin Australia	103	103	100	97.1	97	94.2	0	0.0
All Airlines	263	263	244	92.8	224	85.2	0	0.0
Brisbane-Bundaberg								
QantasLink	120	118	96	81.4	99	83.9	2	1.7
Virgin Australia	30	30	29	96.7	28	93.3	0	0.0
All Airlines	150	148	125	84.5	127	85.8	2	1.3
Brisbane-Cairns								
Jetstar	104	100	91	91.0	83	83.0	4	3.8
Qantas	23	23	22	95.7	22	95.7	0	0.0
QantasLink	150	145	123	84.8	121	83.4	5	3.3
Tigerair Australia	32	31	22	71.0	20	64.5	1	3.1
Virgin Australia	124	123	109	88.6	104	84.6	1	0.8
All Airlines	433	422	367	87.0	350	82.9	11	2.5
Brisbane-Canberra								
QantasLink	147	147	128	87.1	124	84.4	0	0.0
Tigerair Australia	21	21	19	90.5	19	90.5	0	0.0
Virgin Australia	100	100	84	84.0	85	85.0	0	0.0
All Airlines	268	268	231	86.2	228	85.1	0	0.0

	Sectors		Arrivals On Time		Departures On Time		Cancellations	
	Sched.	Flown	No.	%	No.	%	No.	%
Brisbane-Darwin								
Jetstar	23	21	20	95.2	18	85.7	2	8.7
Qantas	33	33	32	97.0	26	78.8	0	0.0
Tigerair Australia	14	14	12	85.7	12	85.7	0	0.0
Virgin Australia	30	30	26	86.7	24	80.0	0	0.0
All Airlines	100	98	90	91.8	80	81.6	2	2.0
Brisbane-Emerald								
QantasLink	113	108	97	89.8	95	88.0	5	4.4
Virgin Australia	49	49	45	91.8	47	95.9	0	0.0
All Airlines	162	157	142	90.4	142	90.4	5	3.1
Brisbane-Gladstone								
QantasLink	136	133	117	88.0	123	92.5	3	2.2
Virgin Australia	70	70	63	90.0	63	90.0	0	0.0
All Airlines	206	203	180	88.7	186	91.6	3	1.5
Brisbane-Hamilton Island								
QantasLink	28	27	20	74.1	19	70.4	1	3.6
Virgin Australia	30	30	24	80.0	27	90.0	0	0.0
All Airlines	58	57	44	77.2	46	80.7	1	1.7
Brisbane-Hobart								
Jetstar	26	26	26	100.0	26	100.0	0	0.0
Virgin Australia	43	43	35	81.4	37	86.0	0	0.0
All Airlines	69	69	61	88.4	63	91.3	0	0.0
Brisbane-Mackay								
Jetstar	34	34	27	79.4	25	73.5	0	0.0
QantasLink	131	129	104	80.6	98	76.0	2	1.5
Virgin Australia	140	140	122	87.1	124	88.6	0	0.0
All Airlines	305	303	253	83.5	247	81.5	2	0.7
Brisbane-Melbourne								
Jetstar	193	187	144	77.0	117	62.6	6	3.1
Qantas	397	394	335	85.0	333	84.5	3	0.8
Tigerair Australia	115	109	81	74.3	79	72.5	6	5.2
Virgin Australia	359	354	305	86.2	310	87.6	5	1.4
All Airlines	1 064	1 044	865	82.9	839	80.4	20	1.9
Brisbane-Mount Isa								
QantasLink	54	54	46	85.2	47	87.0	0	0.0
Virgin Australia	18	18	17	94.4	17	94.4	0	0.0
All Airlines	72	72	63	87.5	64	88.9	0	0.0
Brisbane-Newcastle								
Jetstar	76	76	62	81.6	60	78.9	0	0.0
QantasLink	85	81	67	82.7	65	80.2	4	4.7
Virgin Australia	77	77	65	84.4	68	88.3	0	0.0
All Airlines	238	234	194	82.9	193	82.5	4	1.7
Brisbane-Perth								
Qantas	143	143	131	91.6	123	86.0	0	0.0
Virgin Australia	109	109	102	93.6	86	78.9	0	0.0
All Airlines	252	252	233	92.5	209	82.9	0	0.0
Brisbane-Proserpine								
Jetstar	38	38	34	89.5	34	89.5	0	0.0
Virgin Australia	47	47	40	85.1	41	87.2	0	0.0
All Airlines	85	85	74	87.1	75	88.2	0	0.0

	Sectors		Arrivals On Time		Departures On Time		Cancellations	
	Sched.	Flown	No.	%	No.	%	No.	%
Brisbane-Rockhampton								
QantasLink	177	176	148	84.1	150	85.2	1	0.6
Virgin Australia	135	135	115	85.2	114	84.4	0	0.0
All Airlines	312	311	263	84.6	264	84.9	1	0.3
Brisbane-Sydney								
Jetstar	204	195	154	79.0	143	73.3	9	4.4
Qantas	599	585	504	86.2	508	86.8	14	2.3
Tigerair Australia	122	118	78	66.1	79	66.9	4	3.3
Virgin Australia	511	496	383	77.2	410	82.7	15	2.9
All Airlines	1 436	1 394	1 119	80.3	1 140	81.8	42	2.9
Brisbane-Townsville								
Jetstar	60	60	53	88.3	53	88.3	0	0.0
Qantas	48	48	46	95.8	45	93.8	0	0.0
QantasLink	103	101	77	76.2	77	76.2	2	1.9
Virgin Australia	142	141	128	90.8	125	88.7	1	0.7
All Airlines	353	350	304	86.9	300	85.7	3	0.8
Broome-Perth								
Qantas	3	3	2	66.7	0	0.0	0	0.0
QantasLink	87	87	78	89.7	73	83.9	0	0.0
Virgin Australia	3	3	3	100.0	1	33.3	0	0.0
Virgin Australia Regional Airlines	66	66	55	83.3	48	72.7	0	0.0
All Airlines	159	159	138	86.8	122	76.7	0	0.0
Bundaberg-Brisbane								
QantasLink	120	118	100	84.7	102	86.4	2	1.7
Virgin Australia	30	30	28	93.3	29	96.7	0	0.0
All Airlines	150	148	128	86.5	131	88.5	2	1.3
Cairns-Brisbane								
Jetstar	104	100	90	90.0	83	83.0	4	3.8
Qantas	23	23	21	91.3	21	91.3	0	0.0
QantasLink	150	143	116	81.1	121	84.6	7	4.7
Tigerair Australia	32	31	22	71.0	23	74.2	1	3.1
Virgin Australia	124	123	111	90.2	110	89.4	1	0.8
All Airlines	433	420	360	85.7	358	85.2	13	3.0
Cairns-Melbourne								
Jetstar	126	121	101	83.5	105	86.8	5	4.0
Qantas	35	34	25	73.5	24	70.6	1	2.9
Tigerair Australia	36	36	25	69.4	23	63.9	0	0.0
Virgin Australia	37	37	25	67.6	30	81.1	0	0.0
All Airlines	234	228	176	77.2	182	79.8	6	2.6
Cairns-Sydney								
Jetstar	110	110	92	83.6	96	87.3	0	0.0
Qantas	61	61	50	82.0	51	83.6	0	0.0
Tigerair Australia	30	30	26	86.7	27	90.0	0	0.0
Virgin Australia	91	91	76	83.5	78	85.7	0	0.0
All Airlines	292	292	244	83.6	252	86.3	0	0.0
Cairns-Townsville								
QantasLink	132	130	114	87.7	115	88.5	2	1.5
Regional Express	10	10	10	100.0	10	100.0	0	0.0
All Airlines	142	140	124	88.6	125	89.3	2	1.4

	<i>Sectors</i>		<i>Arrivals On Time</i>		<i>Departures On Time</i>		<i>Cancellations</i>	
	<i>Sched.</i>	<i>Flown</i>	<i>No.</i>	<i>%</i>	<i>No.</i>	<i>%</i>	<i>No.</i>	<i>%</i>
Canberra-Adelaide								
Qantas	47	47	44	93.6	42	89.4	0	0.0
QantasLink	3	3	3	100.0	3	100.0	0	0.0
Virgin Australia	25	25	23	92.0	22	88.0	0	0.0
All Airlines	75	75	70	93.3	67	89.3	0	0.0
Canberra-Brisbane								
QantasLink	147	146	128	87.7	131	89.7	1	0.7
Tigerair Australia	21	21	18	85.7	17	81.0	0	0.0
Virgin Australia	99	99	85	85.9	86	86.9	0	0.0
All Airlines	267	266	231	86.8	234	88.0	1	0.4
Canberra-Melbourne								
Qantas	232	227	194	85.5	194	85.5	5	2.2
QantasLink	40	39	35	89.7	35	89.7	1	2.5
Tigerair Australia	36	35	24	68.6	26	74.3	1	2.8
Virgin Australia	154	152	117	77.0	131	86.2	2	1.3
All Airlines	462	453	370	81.7	386	85.2	9	1.9
Canberra-Sydney								
QantasLink	450	435	349	80.2	367	84.4	15	3.3
Virgin Australia	231	229	192	83.8	200	87.3	2	0.9
All Airlines	681	664	541	81.5	567	85.4	17	2.5
Coffs Harbour-Sydney								
QantasLink	126	125	109	87.2	107	85.6	1	0.8
Tigerair Australia	25	25	19	76.0	20	80.0	0	0.0
Virgin Australia	30	30	26	86.7	26	86.7	0	0.0
All Airlines	181	180	154	85.6	153	85.0	1	0.6
Darwin-Alice Springs								
Qantas	58	57	54	94.7	55	96.5	1	1.7
Virgin Australia	15	15	14	93.3	14	93.3	0	0.0
Virgin Australia Regional Airlines	4	4	3	75.0	3	75.0	0	0.0
All Airlines	77	76	71	93.4	72	94.7	1	1.3
Darwin-Brisbane								
Jetstar	23	21	17	81.0	16	76.2	2	8.7
Qantas	32	32	29	90.6	28	87.5	0	0.0
Tigerair Australia	15	15	13	86.7	12	80.0	0	0.0
Virgin Australia	30	30	20	66.7	22	73.3	0	0.0
All Airlines	100	98	79	80.6	78	79.6	2	2.0
Darwin-Melbourne								
Jetstar	28	28	20	71.4	18	64.3	0	0.0
Qantas	29	29	22	75.9	20	69.0	0	0.0
Virgin Australia	30	30	25	83.3	26	86.7	0	0.0
All Airlines	87	87	67	77.0	64	73.6	0	0.0
Darwin-Perth								
Qantas	30	30	29	96.7	30	100.0	0	0.0
Virgin Australia	22	22	20	90.9	18	81.8	0	0.0
Virgin Australia Regional Airlines	8	8	3	37.5	2	25.0	0	0.0
All Airlines	60	60	52	86.7	50	83.3	0	0.0
Darwin-Sydney								
Jetstar	26	25	20	80.0	19	76.0	1	3.8
Qantas	42	42	32	76.2	34	81.0	0	0.0
Virgin Australia	27	27	15	55.6	18	66.7	0	0.0
All Airlines	95	94	67	71.3	71	75.5	1	1.1

	<i>Sectors</i>		<i>Arrivals On Time</i>		<i>Departures On Time</i>		<i>Cancellations</i>	
	<i>Sched.</i>	<i>Flown</i>	<i>No.</i>	<i>%</i>	<i>No.</i>	<i>%</i>	<i>No.</i>	<i>%</i>
Dubbo-Sydney								
QantasLink	103	101	79	78.2	79	78.2	2	1.9
Regional Express	120	119	95	79.8	103	86.6	1	0.8
All Airlines	223	220	174	79.1	182	82.7	3	1.3
Emerald-Brisbane								
QantasLink	113	108	93	86.1	97	89.8	5	4.4
Virgin Australia	48	48	48	100.0	47	97.9	0	0.0
All Airlines	161	156	141	90.4	144	92.3	5	3.1
Geraldton-Perth								
QantasLink	48	48	45	93.8	43	89.6	0	0.0
Virgin Australia Regional Airlines	30	30	23	76.7	24	80.0	0	0.0
All Airlines	78	78	68	87.2	67	85.9	0	0.0
Gladstone-Brisbane								
QantasLink	137	134	112	83.6	111	82.8	3	2.2
Virgin Australia	70	70	62	88.6	64	91.4	0	0.0
All Airlines	207	204	174	85.3	175	85.8	3	1.4
Gold Coast-Adelaide								
Jetstar	28	28	27	96.4	26	92.9	0	0.0
Virgin Australia	34	34	30	88.2	30	88.2	0	0.0
All Airlines	62	62	57	91.9	56	90.3	0	0.0
Gold Coast-Melbourne								
Jetstar	226	224	190	84.8	176	78.6	2	0.9
Qantas	30	30	24	80.0	17	56.7	0	0.0
Tigerair Australia	86	85	58	68.2	50	58.8	1	1.2
Virgin Australia	195	193	172	89.1	154	79.8	2	1.0
All Airlines	537	532	444	83.5	397	74.6	5	0.9
Gold Coast-Sydney								
Jetstar	325	318	268	84.3	258	81.1	7	2.2
Qantas	71	69	59	85.5	57	82.6	2	2.8
QantasLink	56	56	44	78.6	47	83.9	0	0.0
Tigerair Australia	93	93	75	80.6	77	82.8	0	0.0
Virgin Australia	253	251	204	81.3	200	79.7	2	0.8
All Airlines	798	787	650	82.6	639	81.2	11	1.4
Hamilton Island-Brisbane								
QantasLink	28	27	19	70.4	18	66.7	1	3.6
Virgin Australia	30	30	27	90.0	27	90.0	0	0.0
All Airlines	58	57	46	80.7	45	78.9	1	1.7
Hamilton Island-Sydney								
Jetstar	26	26	20	76.9	20	76.9	0	0.0
Qantas	5	5	5	100.0	5	100.0	0	0.0
QantasLink	21	21	13	61.9	14	66.7	0	0.0
Virgin Australia	25	25	22	88.0	22	88.0	0	0.0
All Airlines	77	77	60	77.9	61	79.2	0	0.0
Hobart-Brisbane								
Jetstar	27	27	27	100.0	27	100.0	0	0.0
Virgin Australia	43	43	27	62.8	31	72.1	0	0.0
All Airlines	70	70	54	77.1	58	82.9	0	0.0

	Sectors		Arrivals On Time		Departures On Time		Cancellations	
	Sched.	Flown	No.	%	No.	%	No.	%
Hobart-Melbourne								
Jetstar	172	168	104	61.9	99	58.9	4	2.3
Qantas	111	110	69	62.7	74	67.3	1	0.9
Tigerair Australia	43	42	27	64.3	26	61.9	1	2.3
Virgin Australia	143	143	114	79.7	115	80.4	0	0.0
All Airlines	469	463	314	67.8	314	67.8	6	1.3
Hobart-Sydney								
Jetstar	87	87	72	82.8	60	69.0	0	0.0
QantasLink	70	69	52	75.4	53	76.8	1	1.4
Virgin Australia	76	76	68	89.5	64	84.2	0	0.0
All Airlines	233	232	192	82.8	177	76.3	1	0.4
Kalgoorlie-Perth								
Qantas	10	10	10	100.0	10	100.0	0	0.0
QantasLink	78	76	71	93.4	70	92.1	2	2.6
Virgin Australia	35	32	29	90.6	28	87.5	3	8.6
Virgin Australia Regional Airlines	43	43	39	90.7	38	88.4	0	0.0
All Airlines	166	161	149	92.5	146	90.7	5	3.0
Karratha-Perth								
Qantas	41	37	36	97.3	35	94.6	4	9.8
QantasLink	142	137	123	89.8	118	86.1	5	3.5
Virgin Australia Regional Airlines	61	60	44	73.3	43	71.7	1	1.6
All Airlines	244	234	203	86.8	196	83.8	10	4.1
Launceston-Melbourne								
Jetstar	136	136	94	69.1	96	70.6	0	0.0
QantasLink	116	116	99	85.3	96	82.8	0	0.0
Virgin Australia	117	117	97	82.9	101	86.3	0	0.0
All Airlines	369	369	290	78.6	293	79.4	0	0.0
Launceston-Sydney								
Jetstar	51	51	38	74.5	36	70.6	0	0.0
Virgin Australia	38	38	30	78.9	32	84.2	0	0.0
All Airlines	89	89	68	76.4	68	76.4	0	0.0
Mackay-Brisbane								
Jetstar	35	34	30	88.2	25	73.5	1	2.9
QantasLink	126	123	99	80.5	101	82.1	3	2.4
Virgin Australia	140	140	131	93.6	130	92.9	0	0.0
All Airlines	301	297	260	87.5	256	86.2	4	1.3
Melbourne-Adelaide								
Jetstar	115	112	87	77.7	92	82.1	3	2.6
Qantas	281	279	244	87.5	245	87.8	2	0.7
Tigerair Australia	84	81	58	71.6	61	75.3	3	3.6
Virgin Australia	258	256	225	87.9	226	88.3	2	0.8
Virgin Australia Regional Airlines	4	4	2	50.0	1	25.0	0	0.0
All Airlines	742	732	616	84.2	625	85.4	10	1.3
Melbourne-Brisbane								
Jetstar	193	187	122	65.2	116	62.0	6	3.1
Qantas	397	394	331	84.0	332	84.3	3	0.8
Tigerair Australia	115	109	86	78.9	82	75.2	6	5.2
Virgin Australia	359	349	308	88.3	314	90.0	10	2.8
All Airlines	1 064	1 039	847	81.5	844	81.2	25	2.3

	<i>Sectors</i>		<i>Arrivals On Time</i>		<i>Departures On Time</i>		<i>Cancellations</i>	
	<i>Sched.</i>	<i>Flown</i>	<i>No.</i>	<i>%</i>	<i>No.</i>	<i>%</i>	<i>No.</i>	<i>%</i>
Melbourne-Cairns								
Jetstar	126	122	100	82.0	99	81.1	4	3.2
Qantas	35	35	29	82.9	29	82.9	0	0.0
Tigerair Australia	36	36	25	69.4	28	77.8	0	0.0
Virgin Australia	37	37	30	81.1	34	91.9	0	0.0
All Airlines	234	230	184	80.0	190	82.6	4	1.7
Melbourne-Canberra								
Qantas	232	229	197	86.0	193	84.3	3	1.3
QantasLink	41	40	36	90.0	37	92.5	1	2.4
Tigerair Australia	36	35	28	80.0	24	68.6	1	2.8
Virgin Australia	154	153	120	78.4	129	84.3	1	0.6
All Airlines	463	457	381	83.4	383	83.8	6	1.3
Melbourne-Darwin								
Jetstar	28	28	19	67.9	17	60.7	0	0.0
Qantas	29	29	22	75.9	24	82.8	0	0.0
Virgin Australia	30	30	25	83.3	24	80.0	0	0.0
All Airlines	87	87	66	75.9	65	74.7	0	0.0
Melbourne-Gold Coast								
Jetstar	226	224	178	79.5	183	81.7	2	0.9
Qantas	30	30	23	76.7	23	76.7	0	0.0
Tigerair Australia	86	85	63	74.1	60	70.6	1	1.2
Virgin Australia	196	194	172	88.7	173	89.2	2	1.0
All Airlines	538	533	436	81.8	439	82.4	5	0.9
Melbourne-Hobart								
Jetstar	172	168	123	73.2	125	74.4	4	2.3
Qantas	111	111	84	75.7	91	82.0	0	0.0
Tigerair Australia	43	42	34	81.0	34	81.0	1	2.3
Virgin Australia	143	143	121	84.6	128	89.5	0	0.0
All Airlines	469	464	362	78.0	378	81.5	5	1.1
Melbourne-Launceston								
Jetstar	136	136	98	72.1	103	75.7	0	0.0
QantasLink	116	116	100	86.2	97	83.6	0	0.0
Virgin Australia	116	116	93	80.2	101	87.1	0	0.0
All Airlines	368	368	291	79.1	301	81.8	0	0.0
Melbourne-Mildura								
QantasLink	89	89	79	88.8	80	89.9	0	0.0
Regional Express	77	77	69	89.6	68	88.3	0	0.0
Virgin Australia	30	30	25	83.3	27	90.0	0	0.0
All Airlines	196	196	173	88.3	175	89.3	0	0.0
Melbourne-Newcastle								
Jetstar	118	117	83	70.9	74	63.2	1	0.8
Virgin Australia	30	30	27	90.0	30	100.0	0	0.0
All Airlines	148	147	110	74.8	104	70.7	1	0.7
Melbourne-Perth								
Jetstar	57	57	55	96.5	50	87.7	0	0.0
Qantas	197	197	143	72.6	141	71.6	0	0.0
Tigerair Australia	55	54	41	75.9	39	72.2	1	1.8
Virgin Australia	142	142	103	72.5	99	69.7	0	0.0
All Airlines	451	450	342	76.0	329	73.1	1	0.2

	<i>Sectors</i>		<i>Arrivals On Time</i>		<i>Departures On Time</i>		<i>Cancellations</i>	
	<i>Sched.</i>	<i>Flown</i>	<i>No.</i>	<i>%</i>	<i>No.</i>	<i>%</i>	<i>No.</i>	<i>%</i>
Melbourne-Sunshine Coast								
Jetstar	95	95	81	85.3	79	83.2	0	0.0
Virgin Australia	73	73	63	86.3	62	84.9	0	0.0
All Airlines	168	168	144	85.7	141	83.9	0	0.0
Melbourne-Sydney								
Jetstar	444	434	327	75.3	336	77.4	10	2.3
Qantas	973	909	713	78.4	769	84.6	64	6.6
Tigerair Australia	240	228	134	58.8	142	62.3	12	5.0
Virgin Australia	694	660	528	80.0	582	88.2	34	4.9
All Airlines	2 351	2 231	1 702	76.3	1 829	82.0	120	5.1
Mildura-Melbourne								
QantasLink	89	89	71	79.8	74	83.1	0	0.0
Regional Express	77	77	63	81.8	68	88.3	0	0.0
Virgin Australia	30	30	29	96.7	28	93.3	0	0.0
All Airlines	196	196	163	83.2	170	86.7	0	0.0
Mount Isa-Brisbane								
QantasLink	54	54	48	88.9	48	88.9	0	0.0
Virgin Australia	15	15	14	93.3	14	93.3	0	0.0
All Airlines	69	69	62	89.9	62	89.9	0	0.0
Newcastle-Brisbane								
Jetstar	76	75	62	82.7	63	84.0	1	1.3
QantasLink	84	80	65	81.3	64	80.0	4	4.8
Virgin Australia	78	78	69	88.5	68	87.2	0	0.0
All Airlines	238	233	196	84.1	195	83.7	5	2.1
Newcastle-Melbourne								
Jetstar	118	117	81	69.2	83	70.9	1	0.8
Virgin Australia	30	30	24	80.0	27	90.0	0	0.0
All Airlines	148	147	105	71.4	110	74.8	1	0.7
Newman-Perth								
Qantas	29	28	28	100.0	27	96.4	1	3.4
QantasLink	114	113	99	87.6	99	87.6	1	0.9
Virgin Australia	14	14	14	100.0	13	92.9	0	0.0
Virgin Australia Regional Airlines	26	26	22	84.6	22	84.6	0	0.0
All Airlines	183	181	163	90.1	161	89.0	2	1.1
Perth-Adelaide								
Jetstar	30	30	22	73.3	21	70.0	0	0.0
Qantas	114	114	105	92.1	105	92.1	0	0.0
Virgin Australia	27	27	25	92.6	24	88.9	0	0.0
Virgin Australia Regional Airlines	54	54	36	66.7	47	87.0	0	0.0
All Airlines	225	225	188	83.6	197	87.6	0	0.0
Perth-Brisbane								
Qantas	141	141	91	64.5	120	85.1	0	0.0
Virgin Australia	111	111	77	69.4	96	86.5	0	0.0
All Airlines	252	252	168	66.7	216	85.7	0	0.0
Perth-Broome								
Qantas	3	3	1	33.3	2	66.7	0	0.0
QantasLink	87	86	76	88.4	79	91.9	1	1.1
Virgin Australia	3	3	3	100.0	3	100.0	0	0.0
Virgin Australia Regional Airlines	66	66	47	71.2	57	86.4	0	0.0
All Airlines	159	158	127	80.4	141	89.2	1	0.6

	<i>Sectors</i>		<i>Arrivals On Time</i>		<i>Departures On Time</i>		<i>Cancellations</i>	
	<i>Sched.</i>	<i>Flown</i>	<i>No.</i>	<i>%</i>	<i>No.</i>	<i>%</i>	<i>No.</i>	<i>%</i>
Perth-Darwin								
Qantas	30	30	27	90.0	27	90.0	0	0.0
Virgin Australia	22	22	22	100.0	22	100.0	0	0.0
Virgin Australia Regional Airlines	8	8	4	50.0	5	62.5	0	0.0
All Airlines	60	60	53	88.3	54	90.0	0	0.0
Perth-Geraldton								
QantasLink	48	48	43	89.6	44	91.7	0	0.0
Virgin Australia Regional Airlines	30	30	23	76.7	23	76.7	0	0.0
All Airlines	78	78	66	84.6	67	85.9	0	0.0
Perth-Kalgoorlie								
Qantas	10	10	10	100.0	10	100.0	0	0.0
QantasLink	78	76	70	92.1	70	92.1	2	2.6
Virgin Australia	35	32	31	96.9	30	93.8	3	8.6
Virgin Australia Regional Airlines	43	43	38	88.4	38	88.4	0	0.0
All Airlines	166	161	149	92.5	148	91.9	5	3.0
Perth-Karratha								
Qantas	41	37	35	94.6	33	89.2	4	9.8
QantasLink	144	142	125	88.0	129	90.8	2	1.4
Virgin Australia Regional Airlines	61	61	38	62.3	53	86.9	0	0.0
All Airlines	246	240	198	82.5	215	89.6	6	2.4
Perth-Melbourne								
Jetstar	57	57	48	84.2	43	75.4	0	0.0
Qantas	197	197	148	75.1	150	76.1	0	0.0
Tigerair Australia	55	54	36	66.7	33	61.1	1	1.8
Virgin Australia	142	142	107	75.4	109	76.8	0	0.0
All Airlines	451	450	339	75.3	335	74.4	1	0.2
Perth-Newman								
Qantas	29	28	27	96.4	28	100.0	1	3.4
QantasLink	114	113	102	90.3	101	89.4	1	0.9
Virgin Australia	14	14	14	100.0	14	100.0	0	0.0
Virgin Australia Regional Airlines	26	26	23	88.5	24	92.3	0	0.0
All Airlines	183	181	166	91.7	167	92.3	2	1.1
Perth-Port Hedland								
Qantas	36	35	32	91.4	33	94.3	1	2.8
QantasLink	110	107	88	82.2	99	92.5	3	2.7
Virgin Australia	20	20	19	95.0	20	100.0	0	0.0
Virgin Australia Regional Airlines	32	32	24	75.0	26	81.3	0	0.0
All Airlines	198	194	163	84.0	178	91.8	4	2.0
Perth-Sydney								
Jetstar	30	30	26	86.7	25	83.3	0	0.0
Qantas	198	198	141	71.2	150	75.8	0	0.0
Tigerair Australia	26	26	20	76.9	18	69.2	0	0.0
Virgin Australia	119	119	104	87.4	102	85.7	0	0.0
All Airlines	373	373	291	78.0	295	79.1	0	0.0
Port Hedland-Perth								
Qantas	36	35	34	97.1	33	94.3	1	2.8
QantasLink	110	107	91	85.0	93	86.9	3	2.7
Virgin Australia	20	20	19	95.0	18	90.0	0	0.0
Virgin Australia Regional Airlines	32	32	25	78.1	24	75.0	0	0.0
All Airlines	198	194	169	87.1	168	86.6	4	2.0

	<i>Sectors</i>		<i>Arrivals On Time</i>		<i>Departures On Time</i>		<i>Cancellations</i>	
	<i>Sched.</i>	<i>Flown</i>	<i>No.</i>	<i>%</i>	<i>No.</i>	<i>%</i>	<i>No.</i>	<i>%</i>
Port Lincoln-Adelaide								
QantasLink	98	97	87	89.7	87	89.7	1	1.0
Regional Express	205	205	196	95.6	195	95.1	0	0.0
All Airlines	303	302	283	93.7	282	93.4	1	0.3
Port Macquarie-Sydney								
QantasLink	107	106	88	83.0	91	85.8	1	0.9
Virgin Australia	55	53	40	75.5	41	77.4	2	3.6
All Airlines	162	159	128	80.5	132	83.0	3	1.9
Proserpine-Brisbane								
Jetstar	38	38	34	89.5	34	89.5	0	0.0
Virgin Australia	47	45	40	88.9	39	86.7	2	4.3
All Airlines	85	83	74	89.2	73	88.0	2	2.4
Proserpine-Sydney								
Jetstar	13	13	13	100.0	13	100.0	0	0.0
Tigerair Australia	19	19	17	89.5	17	89.5	0	0.0
All Airlines	32	32	30	93.8	30	93.8	0	0.0
Rockhampton-Brisbane								
QantasLink	182	180	144	80.0	155	86.1	2	1.1
Virgin Australia	135	135	128	94.8	126	93.3	0	0.0
All Airlines	317	315	272	86.3	281	89.2	2	0.6
Sunshine Coast-Melbourne								
Jetstar	96	95	74	77.9	72	75.8	1	1.0
Virgin Australia	73	73	50	68.5	47	64.4	0	0.0
All Airlines	169	168	124	73.8	119	70.8	1	0.6
Sunshine Coast-Sydney								
Jetstar	123	122	97	79.5	91	74.6	1	0.8
QantasLink	54	54	39	72.2	37	68.5	0	0.0
Virgin Australia	62	62	43	69.4	47	75.8	0	0.0
All Airlines	239	238	179	75.2	175	73.5	1	0.4
Sydney-Adelaide								
Jetstar	142	141	123	87.2	115	81.6	1	0.7
Qantas	221	220	195	88.6	178	80.9	1	0.5
Tigerair Australia	29	29	22	75.9	19	65.5	0	0.0
Virgin Australia	158	158	133	84.2	129	81.6	0	0.0
All Airlines	550	548	473	86.3	441	80.5	2	0.4
Sydney-Albury								
QantasLink	100	100	82	82.0	81	81.0	0	0.0
Regional Express	93	93	80	86.0	80	86.0	0	0.0
Virgin Australia	55	55	49	89.1	45	81.8	0	0.0
All Airlines	248	248	211	85.1	206	83.1	0	0.0
Sydney-Armidale								
QantasLink	117	115	89	77.4	89	77.4	2	1.7
Regional Express	64	64	56	87.5	54	84.4	0	0.0
All Airlines	181	179	145	81.0	143	79.9	2	1.1
Sydney-Ayers Rock								
Jetstar	29	29	22	75.9	24	82.8	0	0.0
Virgin Australia	30	30	29	96.7	27	90.0	0	0.0
All Airlines	59	59	51	86.4	51	86.4	0	0.0

	<i>Sectors</i>		<i>Arrivals On Time</i>		<i>Departures On Time</i>		<i>Cancellations</i>	
	<i>Sched.</i>	<i>Flown</i>	<i>No.</i>	<i>%</i>	<i>No.</i>	<i>%</i>	<i>No.</i>	<i>%</i>
Sydney-Ballina								
Jetstar	89	89	73	82.0	73	82.0	0	0.0
Regional Express	22	22	21	95.5	20	90.9	0	0.0
Virgin Australia	42	41	34	82.9	36	87.8	1	2.4
All Airlines	153	152	128	84.2	129	84.9	1	0.7
Sydney-Brisbane								
Jetstar	204	196	157	80.1	144	73.5	8	3.9
Qantas	601	586	473	80.7	485	82.8	15	2.5
QantasLink	1	1	0	0.0	1	100.0	0	0.0
Tigerair Australia	122	118	84	71.2	82	69.5	4	3.3
Virgin Australia	505	495	386	78.0	399	80.6	10	2.0
All Airlines	1 433	1 396	1 100	78.8	1 111	79.6	37	2.6
Sydney-Cairns								
Jetstar	112	112	101	90.2	90	80.4	0	0.0
Qantas	61	61	52	85.2	49	80.3	0	0.0
Tigerair Australia	30	30	29	96.7	23	76.7	0	0.0
Virgin Australia	91	91	81	89.0	78	85.7	0	0.0
All Airlines	294	294	263	89.5	240	81.6	0	0.0
Sydney-Canberra								
QantasLink	447	437	345	78.9	354	81.0	10	2.2
Virgin Australia	230	228	197	86.4	194	85.1	2	0.9
All Airlines	677	665	542	81.5	548	82.4	12	1.8
Sydney-Coffs Harbour								
QantasLink	126	125	108	86.4	102	81.6	1	0.8
Tigerair Australia	25	25	13	52.0	16	64.0	0	0.0
Virgin Australia	30	30	29	96.7	29	96.7	0	0.0
All Airlines	181	180	150	83.3	147	81.7	1	0.6
Sydney-Darwin								
Jetstar	26	26	22	84.6	20	76.9	0	0.0
Qantas	41	41	38	92.7	27	65.9	0	0.0
Virgin Australia	27	27	20	74.1	20	74.1	0	0.0
All Airlines	94	94	80	85.1	67	71.3	0	0.0
Sydney-Dubbo								
QantasLink	103	103	80	77.7	79	76.7	0	0.0
Regional Express	121	121	106	87.6	102	84.3	0	0.0
All Airlines	224	224	186	83.0	181	80.8	0	0.0
Sydney-Gold Coast								
Jetstar	323	319	268	84.0	257	80.6	4	1.2
Qantas	71	69	59	85.5	53	76.8	2	2.8
QantasLink	56	56	38	67.9	38	67.9	0	0.0
Tigerair Australia	93	93	79	84.9	81	87.1	0	0.0
Virgin Australia	254	253	204	80.6	209	82.6	1	0.4
All Airlines	797	790	648	82.0	638	80.8	7	0.9
Sydney-Hamilton Island								
Jetstar	26	26	20	76.9	18	69.2	0	0.0
Qantas	5	5	5	100.0	5	100.0	0	0.0
QantasLink	21	21	13	61.9	15	71.4	0	0.0
Virgin Australia	25	25	22	88.0	22	88.0	0	0.0
All Airlines	77	77	60	77.9	60	77.9	0	0.0

	<i>Sectors</i>		<i>Arrivals On Time</i>		<i>Departures On Time</i>		<i>Cancellations</i>	
	<i>Sched.</i>	<i>Flown</i>	<i>No.</i>	<i>%</i>	<i>No.</i>	<i>%</i>	<i>No.</i>	<i>%</i>
Sydney-Hobart								
Jetstar	87	87	76	87.4	70	80.5	0	0.0
QantasLink	70	69	52	75.4	50	72.5	1	1.4
Virgin Australia	76	76	66	86.8	65	85.5	0	0.0
All Airlines	233	232	194	83.6	185	79.7	1	0.4
Sydney-Launceston								
Jetstar	51	51	45	88.2	43	84.3	0	0.0
Virgin Australia	39	39	33	84.6	31	79.5	0	0.0
All Airlines	90	90	78	86.7	74	82.2	0	0.0
Sydney-Melbourne								
Jetstar	444	436	350	80.3	346	79.4	8	1.8
Qantas	974	910	704	77.4	727	79.9	64	6.6
Tigerair Australia	240	228	144	63.2	136	59.6	12	5.0
Virgin Australia	698	656	516	78.7	533	81.3	42	6.0
All Airlines	2 356	2 230	1 714	76.9	1 742	78.1	126	5.3
Sydney-Perth								
Jetstar	30	30	24	80.0	16	53.3	0	0.0
Qantas	198	198	160	80.8	130	65.7	0	0.0
Tigerair Australia	26	26	21	80.8	21	80.8	0	0.0
Virgin Australia	119	119	91	76.5	84	70.6	0	0.0
All Airlines	373	373	296	79.4	251	67.3	0	0.0
Sydney-Port Macquarie								
QantasLink	107	106	85	80.2	85	80.2	1	0.9
Virgin Australia	55	53	40	75.5	39	73.6	2	3.6
All Airlines	162	159	125	78.6	124	78.0	3	1.9
Sydney-Proserpine								
Jetstar	13	13	13	100.0	13	100.0	0	0.0
Tigerair Australia	19	19	18	94.7	18	94.7	0	0.0
All Airlines	32	32	31	96.9	31	96.9	0	0.0
Sydney-Sunshine Coast								
Jetstar	123	122	96	78.7	88	72.1	1	0.8
QantasLink	54	54	34	63.0	36	66.7	0	0.0
Virgin Australia	61	61	46	75.4	43	70.5	0	0.0
All Airlines	238	237	176	74.3	167	70.5	1	0.4
Sydney-Tamworth								
QantasLink	123	119	98	82.4	91	76.5	4	3.3
Virgin Australia	50	50	40	80.0	41	82.0	0	0.0
All Airlines	173	169	138	81.7	132	78.1	4	2.3
Sydney-Townsville								
Jetstar	29	29	22	75.9	17	58.6	0	0.0
Virgin Australia	25	24	18	75.0	19	79.2	1	4.0
All Airlines	54	53	40	75.5	36	67.9	1	1.9
Sydney-Wagga Wagga								
QantasLink	98	98	82	83.7	85	86.7	0	0.0
Regional Express	115	115	101	87.8	100	87.0	0	0.0
All Airlines	213	213	183	85.9	185	86.9	0	0.0
Tamworth-Sydney								
QantasLink	123	119	95	79.8	98	82.4	4	3.3
Virgin Australia	50	50	40	80.0	42	84.0	0	0.0
All Airlines	173	169	135	79.9	140	82.8	4	2.3

	<i>Sectors</i>		<i>Arrivals On Time</i>		<i>Departures On Time</i>		<i>Cancellations</i>	
	<i>Sched.</i>	<i>Flown</i>	<i>No.</i>	<i>%</i>	<i>No.</i>	<i>%</i>	<i>No.</i>	<i>%</i>
Townsville-Brisbane								
Jetstar	59	59	46	78.0	45	76.3	0	0.0
Qantas	48	48	45	93.8	44	91.7	0	0.0
QantasLink	104	101	78	77.2	83	82.2	3	2.9
Virgin Australia	142	141	132	93.6	130	92.2	1	0.7
All Airlines	353	349	301	86.2	302	86.5	4	1.1
Townsville-Cairns								
QantasLink	132	131	119	90.8	121	92.4	1	0.8
Regional Express	10	10	10	100.0	10	100.0	0	0.0
All Airlines	142	141	129	91.5	131	92.9	1	0.7
Townsville-Sydney								
Jetstar	29	29	21	72.4	15	51.7	0	0.0
Virgin Australia	25	24	18	75.0	19	79.2	1	4.0
All Airlines	54	53	39	73.6	34	64.2	1	1.9
Wagga Wagga-Sydney								
QantasLink	98	98	81	82.7	85	86.7	0	0.0
Regional Express	112	112	86	76.8	93	83.0	0	0.0
All Airlines	210	210	167	79.5	178	84.8	0	0.0

Airports

On time performance is reported for all routes where the passenger load averages over 8000 passengers per month, and where two or more airlines operate in competition. The following data reports by airport against flights operated on those routes only. This month, 8 major city airports and 32 regional city airports are covered.

Airport	Arrivals			Departures		
	Sectors	On Time		Sectors	On Time	
	Flown	No.	%	Flown	No.	%
Adelaide						
Jetstar	338	283	83.7	338	291	86.1
Qantas	793	711	89.7	792	688	86.9
QantasLink	100	90	90.0	101	91	90.1
Regional Express	205	196	95.6	206	200	97.1
Tigerair Australia	140	103	73.6	140	96	68.6
Virgin Australia	622	553	88.9	622	550	88.4
Virgin Australia Regional Airlines	63	42	66.7	63	39	61.9
All Airlines	2 261	1 978	87.5	2 262	1 955	86.4
Relates to services to and from Alice Springs, Brisbane, Canberra, Gold Coast, Melbourne, Perth, Port Lincoln and Sydney.						
Albury						
QantasLink	100	82	82.0	99	79	79.8
Regional Express	93	80	86.0	95	73	76.8
Virgin Australia	55	49	89.1	55	50	90.9
All Airlines	248	211	85.1	249	202	81.1
Relates to services to and from Sydney only.						
Alice Springs						
Qantas	87	82	94.3	87	81	93.1
Virgin Australia	34	32	94.1	34	32	94.1
Virgin Australia Regional Airlines	9	7	77.8	10	7	70.0
All Airlines	130	121	93.1	131	120	91.6
Relates to services to and from Adelaide and Darwin.						
Armidale						
QantasLink	115	89	77.4	115	85	73.9
Regional Express	64	56	87.5	64	53	82.8
All Airlines	179	145	81.0	179	138	77.1
Relates to services to and from Sydney only.						
Ayers Rock						
Jetstar	29	22	75.9	30	19	63.3
Virgin Australia	30	29	96.7	30	25	83.3
All Airlines	59	51	86.4	60	44	73.3
Relates to services to and from Sydney only.						
Ballina						
Jetstar	89	73	82.0	90	64	71.1
Regional Express	22	21	95.5	20	13	65.0
Virgin Australia	41	34	82.9	41	37	90.2
All Airlines	152	128	84.2	151	114	75.5
Relates to services to and from Sydney only.						

Airport	Arrivals			Departures		
	Sectors	On Time		Sectors	On Time	
	Flown	No.	%	Flown	No.	%
Brisbane						
Jetstar	764	610	79.8	764	581	76.0
Qantas	1 327	1 078	81.2	1 329	1 146	86.2
QantasLink	1 215	1 002	82.5	1 219	1 018	83.5
Tigerair Australia	324	240	74.1	323	225	69.7
Virgin Australia	2 090	1 790	85.6	2 095	1 807	86.3
All Airlines	5 720	4 720	82.5	5 730	4 777	83.4

Relates to services to and from Adelaide, Bundaberg, Cairns, Canberra, Darwin, Emerald, Gladstone, Hamilton Island, Hobart, Mackay, Melbourne, Mount Isa, Newcastle, Perth, Proserpine, Rockhampton, Sydney and Townsville.

Broome

Qantas	3	1	33.3	3	0	0.0
QantasLink	86	76	88.4	87	73	83.9
Virgin Australia	3	3	100.0	3	1	33.3
Virgin Australia Regional Airlines	66	47	71.2	66	48	72.7
All Airlines	158	127	80.4	159	122	76.7

Relates to services to and from Perth only.

Bundaberg

QantasLink	118	96	81.4	118	102	86.4
Virgin Australia	30	29	96.7	30	29	96.7
All Airlines	148	125	84.5	148	131	88.5

Relates to services to and from Brisbane only.

Cairns

Jetstar	334	292	87.4	331	284	85.8
Qantas	119	103	86.6	118	96	81.4
QantasLink	276	242	87.7	273	236	86.4
Regional Express	10	10	100.0	10	10	100.0
Tigerair Australia	97	76	78.4	97	73	75.3
Virgin Australia	251	220	87.6	251	218	86.9
All Airlines	1 087	943	86.8	1 080	917	84.9

Relates to services to and from Brisbane, Melbourne, Sydney and Townsville.

Canberra

Qantas	276	237	85.9	274	236	86.1
QantasLink	627	511	81.5	623	536	86.0
Tigerair Australia	56	47	83.9	56	43	76.8
Virgin Australia	506	424	83.8	505	439	86.9
All Airlines	1 465	1 219	83.2	1 458	1 254	86.0

Relates to services to and from Adelaide, Brisbane, Melbourne and Sydney.

Coffs Harbour

QantasLink	125	108	86.4	125	107	85.6
Tigerair Australia	25	13	52.0	25	20	80.0
Virgin Australia	30	29	96.7	30	26	86.7
All Airlines	180	150	83.3	180	153	85.0

Relates to services to and from Sydney only.

Airport	Arrivals			Departures		
	Sectors	On Time		Sectors	On Time	
	Flown	No.	%	Flown	No.	%
Darwin						
Jetstar	75	61	81.3	74	53	71.6
Qantas	190	172	90.5	190	167	87.9
Tigerair Australia	14	12	85.7	15	12	80.0
Virgin Australia	124	108	87.1	124	98	79.0
Virgin Australia Regional Airlines	13	7	53.8	12	5	41.7
All Airlines	416	360	86.5	415	335	80.7
Relates to services to and from Alice Springs, Brisbane, Melbourne, Perth and Sydney.						
Dubbo						
QantasLink	103	80	77.7	101	79	78.2
Regional Express	121	106	87.6	119	103	86.6
All Airlines	224	186	83.0	220	182	82.7
Relates to services to and from Sydney only.						
Emerald						
QantasLink	108	97	89.8	108	97	89.8
Virgin Australia	49	45	91.8	48	47	97.9
All Airlines	157	142	90.4	156	144	92.3
Relates to services to and from Brisbane only.						
Geraldton						
QantasLink	48	43	89.6	48	43	89.6
Virgin Australia Regional Airlines	30	23	76.7	30	24	80.0
All Airlines	78	66	84.6	78	67	85.9
Relates to services to and from Perth only.						
Gladstone						
QantasLink	133	117	88.0	134	111	82.8
Virgin Australia	70	63	90.0	70	64	91.4
All Airlines	203	180	88.7	204	175	85.8
Relates to services to and from Brisbane only.						
Gold Coast						
Jetstar	571	474	83.0	570	460	80.7
Qantas	99	82	82.8	99	74	74.7
QantasLink	56	38	67.9	56	47	83.9
Tigerair Australia	178	142	79.8	178	127	71.3
Virgin Australia	480	405	84.4	478	384	80.3
All Airlines	1 384	1 141	82.4	1 381	1 092	79.1
Relates to services to and from Adelaide, Melbourne and Sydney.						
Hamilton Island						
Jetstar	26	20	76.9	26	20	76.9
Qantas	5	5	100.0	5	5	100.0
QantasLink	48	33	68.8	48	32	66.7
Virgin Australia	55	46	83.6	55	49	89.1
All Airlines	134	104	77.6	134	106	79.1
Relates to services to and from Brisbane and Sydney.						

Airport	Arrivals			Departures		
	Sectors Flown	On Time		Sectors Flown	On Time	
		No.	%		No.	%
Hobart						
Jetstar	281	225	80.1	282	186	66.0
Qantas	111	84	75.7	110	74	67.3
QantasLink	69	52	75.4	69	53	76.8
Tigerair Australia	42	34	81.0	42	26	61.9
Virgin Australia	262	222	84.7	262	210	80.2
All Airlines	765	617	80.7	765	549	71.8
Relates to services to and from Brisbane, Melbourne and Sydney.						
Kalgoorlie						
Qantas	10	10	100.0	10	10	100.0
QantasLink	76	70	92.1	76	70	92.1
Virgin Australia	32	31	96.9	32	28	87.5
Virgin Australia Regional Airlines	43	38	88.4	43	38	88.4
All Airlines	161	149	92.5	161	146	90.7
Relates to services to and from Perth only.						
Karratha						
Qantas	37	35	94.6	37	35	94.6
QantasLink	142	125	88.0	137	118	86.1
Virgin Australia Regional Airlines	61	38	62.3	60	43	71.7
All Airlines	240	198	82.5	234	196	83.8
Relates to services to and from Perth only.						
Launceston						
Jetstar	187	143	76.5	187	132	70.6
QantasLink	116	100	86.2	116	96	82.8
Virgin Australia	155	126	81.3	155	133	85.8
All Airlines	458	369	80.6	458	361	78.8
Relates to services to and from Melbourne and Sydney.						
Mackay						
Jetstar	34	27	79.4	34	25	73.5
QantasLink	129	104	80.6	123	101	82.1
Virgin Australia	140	122	87.1	140	130	92.9
All Airlines	303	253	83.5	297	256	86.2
Relates to services to and from Brisbane only.						
Melbourne						
Jetstar	1 681	1 302	77.5	1 680	1 274	75.8
Qantas	2 210	1 765	79.9	2 213	1 847	83.5
QantasLink	244	205	84.0	245	214	87.3
Regional Express	77	63	81.8	77	68	88.3
Tigerair Australia	670	447	66.7	670	470	70.1
Virgin Australia	2 211	1 802	81.5	2 213	1 929	87.2
Virgin Australia Regional Airlines	4	3	75.0	4	1	25.0
All Airlines	7 097	5 587	78.7	7 102	5 803	81.7
Relates to services to and from Adelaide, Brisbane, Cairns, Canberra, Darwin, Gold Coast, Hobart, Launceston, Mildura, Newcastle, Perth, Sunshine Coast and Sydney.						
Mildura						
QantasLink	89	79	88.8	89	74	83.1
Regional Express	77	69	89.6	77	68	88.3
Virgin Australia	30	25	83.3	30	28	93.3
All Airlines	196	173	88.3	196	170	86.7
Relates to services to and from Melbourne only.						

Airport	Arrivals			Departures		
	Sectors	On Time		Sectors	On Time	
	Flown	No.	%	Flown	No.	%
Mount Isa						
QantasLink	54	46	85.2	54	48	88.9
Virgin Australia	18	17	94.4	15	14	93.3
All Airlines	72	63	87.5	69	62	89.9
Relates to services to and from Brisbane only.						
Newcastle						
Jetstar	193	145	75.1	192	146	76.0
QantasLink	81	67	82.7	80	64	80.0
Virgin Australia	107	92	86.0	108	95	88.0
All Airlines	381	304	79.8	380	305	80.3
Relates to services to and from Brisbane and Melbourne.						
Newman						
Qantas	28	27	96.4	28	27	96.4
QantasLink	113	102	90.3	113	99	87.6
Virgin Australia	14	14	100.0	14	13	92.9
Virgin Australia Regional Airlines	26	23	88.5	26	22	84.6
All Airlines	181	166	91.7	181	161	89.0
Relates to services to and from Perth only.						
Perth						
Jetstar	117	102	87.2	117	89	76.1
Qantas	795	679	85.4	793	658	83.0
QantasLink	568	507	89.3	572	522	91.3
Tigerair Australia	80	62	77.5	80	51	63.8
Virgin Australia	490	408	83.3	490	420	85.7
Virgin Australia Regional Airlines	319	243	76.2	320	273	85.3
All Airlines	2 369	2 001	84.5	2 372	2 013	84.9
Relates to services to and from Adelaide, Brisbane, Broome, Darwin, Geraldton, Kalgoorlie, Karratha, Melbourne, Newman, Port Hedland and Sydney.						
Port Hedland						
Qantas	35	32	91.4	35	33	94.3
QantasLink	107	88	82.2	107	93	86.9
Virgin Australia	20	19	95.0	20	18	90.0
Virgin Australia Regional Airlines	32	24	75.0	32	24	75.0
All Airlines	194	163	84.0	194	168	86.6
Relates to services to and from Perth only.						
Port Lincoln						
QantasLink	98	88	89.8	97	87	89.7
Regional Express	206	195	94.7	205	195	95.1
All Airlines	304	283	93.1	302	282	93.4
Relates to services to and from Adelaide only.						
Port Macquarie						
QantasLink	106	85	80.2	106	91	85.8
Virgin Australia	53	40	75.5	53	41	77.4
All Airlines	159	125	78.6	159	132	83.0
Relates to services to and from Sydney only.						

Airport	Arrivals			Departures		
	Sectors Flown	On Time		Sectors Flown	On Time	
		No.	%		No.	%
Proserpine						
Jetstar	51	47	92.2	51	47	92.2
Tigerair Australia	19	18	94.7	19	17	89.5
Virgin Australia	47	40	85.1	45	39	86.7
All Airlines	117	105	89.7	115	103	89.6
Relates to services to and from Brisbane and Sydney.						
Rockhampton						
QantasLink	176	148	84.1	180	155	86.1
Virgin Australia	135	115	85.2	135	126	93.3
All Airlines	311	263	84.6	315	281	89.2
Relates to services to and from Brisbane only.						
Sunshine Coast						
Jetstar	217	177	81.6	217	163	75.1
QantasLink	54	34	63.0	54	37	68.5
Virgin Australia	134	109	81.3	135	94	69.6
All Airlines	405	320	79.0	406	294	72.4
Relates to services to and from Melbourne and Sydney.						
Sydney						
Jetstar	1 701	1 358	79.8	1 706	1 334	78.2
Qantas	2 088	1 658	79.4	2 090	1 654	79.1
QantasLink	1 398	1 112	79.5	1 404	1 106	78.8
Regional Express	410	313	76.3	415	356	85.8
Tigerair Australia	568	386	68.0	568	396	69.7
Virgin Australia	2 511	2 009	80.0	2 511	2 043	81.4
All Airlines	8 676	6 836	78.8	8 694	6 889	79.2
Relates to services to and from Adelaide, Albury, Armidale, Ayers Rock, Ballina, Brisbane, Cairns, Canberra, Coffs Harbour, Darwin, Dubbo, Gold Coast, Hamilton Island, Hobart, Launceston, Melbourne, Perth, Port Macquarie, Proserpine, Sunshine Coast, Tamworth, Townsville and Wagga Wagga.						
Tamworth						
QantasLink	119	98	82.4	119	98	82.4
Virgin Australia	50	40	80.0	50	42	84.0
All Airlines	169	138	81.7	169	140	82.8
Relates to services to and from Sydney only.						
Townsville						
Jetstar	89	75	84.3	88	60	68.2
Qantas	48	46	95.8	48	44	91.7
QantasLink	231	191	82.7	232	204	87.9
Regional Express	10	10	100.0	10	10	100.0
Virgin Australia	165	146	88.5	165	149	90.3
All Airlines	543	468	86.2	543	467	86.0
Relates to services to and from Brisbane, Cairns and Sydney.						
Wagga Wagga						
QantasLink	98	82	83.7	98	85	86.7
Regional Express	115	101	87.8	112	93	83.0
All Airlines	213	183	85.9	210	178	84.8
Relates to services to and from Sydney only.						

Definitions

On time arrival	A flight arrival is counted as "on time" if it arrived at the gate before 15 minutes after the scheduled arrival time shown in the carriers' schedule. Neither diverted nor cancelled flights count as on time.
On time departure	A flight departure is counted as "on time" if it departs the gate before 15 minutes after the scheduled departure time shown in the carriers' schedule.
Cancellation	A flight removed from service within 7 days of scheduled departure is regarded as a cancellation.
On time departure percentage	The percentage of on time departures is measured against the number of departures <i>operated</i> on any particular sector.
On time arrival percentage	The percentage of on time arrivals is measured against the number of arrivals <i>operated</i> on any particular sector.
Cancellation percentage	The percentage of cancellations is measured against the number of services <i>scheduled</i> on any particular sector.
