



Australian Government

Department of Infrastructure, Regional Development and Cities

Bureau of Infrastructure, Transport and Regional Economics

STATISTICAL REPORT



Aviation

Domestic airline on time performance 2017-18

© Commonwealth of Australia 2018

ISSN: 1832-0759

Ownership of intellectual property rights in this publication

Unless otherwise noted, copyright (and any other intellectual property rights, if any) in this publication is owned by the Commonwealth of Australia (referred to below as the Commonwealth).

Disclaimer

The material contained in this publication is made available on the understanding that the Commonwealth is not providing professional advice, and that users exercise their own skill and care with respect to its use, and seek independent advice if necessary.

The Commonwealth makes no representations or warranties as to the contents or accuracy of the information contained in this publication. To the extent permitted by law, the Commonwealth disclaims liability to any person or organisation in respect of anything done, or omitted to be done, in reliance upon information contained in this publication.

Creative Commons licence

With the exception of (a) the Coat of Arms; and (b) the Department of Infrastructure, Regional Development and Cities' photos and graphics, copyright in this publication is licensed under a Creative Commons Attribution 3.0 Australia Licence.

Creative Commons Attribution 3.0 Australia Licence is a standard form licence agreement that allows you to copy, communicate and adapt this publication provided that you attribute the work to the Commonwealth and abide by the other licence terms. A summary of the licence terms is available from <http://creativecommons.org/licenses/by/3.0/au/deed.en>. The full licence terms are available from <http://creativecommons.org/licenses/by/3.0/au/legalcode>.

Use of the Coat of Arms

The Department of the Prime Minister and Cabinet sets the terms under which the Coat of Arms is used. Please refer to the Department's Commonwealth Coat of Arms and Government branding web page <http://www.dpmmc.gov.au/guidelines/index.cfm#brand> and, in particular, the Guidelines on the use of the Commonwealth Coat of Arms publication.

An appropriate citation for this report is:

Bureau of Infrastructure, Transport and Regional Economics (BITRE), 2018, Domestic airline on time performance, Statistical Report, BITRE, Canberra ACT.

Contact us

This publication is available in PDF format. All other rights are reserved, including in relation to any Departmental logos or trade marks which may exist. For enquiries regarding the licence and any use of this publication, please contact:

Bureau of Infrastructure, Transport and Regional Economics (BITRE)
Department of Infrastructure, Regional Development and Cities
GPO Box 501, Canberra ACT 2601, Australia
Telephone: (international) +61 2 6274 7210
Fax: (international) +61 2 6274 6855
Email: bitre@infrastructure.gov.au
Website: www.bitre.gov.au

Inquiries

Should you require additional information about the statistics contained in this publication:

Telephone (02) 6274 7790 or Facsimile (02) 6274 7727

Electronic mail: AVSTATS@infrastructure.gov.au

Web site: <http://www.bitre.gov.au/statistics/aviation/otphome.aspx>

Foreword

The Bureau of Infrastructure, Transport and Regional Economics (BITRE) monitors the punctuality and reliability of major domestic airlines operating between Australian airports. The purpose of this is to allow for evaluation of overall industry and individual airline performance, so that consumers of air travel can make informed decisions.

The following domestic airlines currently report this information monthly to the BITRE: Jetstar, Qantas, QantasLink, Regional Express, Tigerair Australia, Virgin Australia and Virgin Australia Regional Airlines. Data has been gathered since November 2003, although some airlines commenced reporting at a later date, including Jetstar which first reported in May 2004, MacAir in July 2005, Tigerair Australia in April 2008 and Virgin Australia Regional Airlines in May 2013. MacAir ceased operations in February 2009 and data was not received for December 2008 onwards. Virgin Blue was rebranded as Virgin Australia in May 2011 and Tiger Airways was rebranded as Tigerair Australia in July 2013 and time series data in Microsoft Excel spreadsheet format on the BITRE website have been revised to reflect these changes. Services operated by Skywest on behalf of Virgin Australia using ATR/F100 aircraft commenced in November 2011 and were shown separately as Virgin Australia – ATR/F100 Operations. Virgin Australia Regional Airlines commenced operations in May 2013. It was formed after the acquisition of Skywest by Virgin Australia and represented a combination of operations previously reported under Skywest and Virgin Australia – ATR/F100 Operations. In January 2016, Virgin Australia transferred their ATR fleet from Virgin Australia Regional Airlines to Virgin Australia.

Information presented in this report is for Australian domestic routes for which the passenger load averaged 8 000 or more passengers per month over the previous six months and where two or more airlines operated in competition on those routes. There were 64 routes that met these criteria for all twelve months in 2017-18. Over time, routes which meet these criteria change as airline networks and traffic levels vary.

Participating airlines report their overall monthly network performance where this is possible.

Total industry figures encompass all services operated by reporting airlines only. These airlines collectively carried over 95 per cent of total domestic passengers (regular public transport only) in 2017.

The method of capturing on time performance varies between airlines utilising different recording systems. Jetstar and Qantas jet aircraft use Aircraft Communication Addressing and Reporting System (ACARS) to electronically measure on time performance. Regional Express, Tigerair Australia, Virgin Australia, Virgin Australia Regional Airlines and the Qantas non-jet fleet record on time performance manually using records from pilots, gate agents and/or ground crews.

After initial data is collected, aggregate reports are audited internally by participating airlines prior to publication.

Reports and detailed time series data in Microsoft Excel spreadsheet format are available from the BITRE website at: <http://www.bitre.gov.au/statistics/aviation/otphome.aspx>.

Contents

	Page
Industry performance	1
Individual routes	9
Airports.....	24
Definitions	31

Industry performance

For the year ended June 2018, on time performance over all routes operated by participating airlines (Jetstar, Qantas, QantasLink, Regional Express, Tigerair Australia, Virgin Australia and Virgin Australia Regional Airlines) averaged 81.2 per cent for on time arrivals and 82.0 per cent for on time departures. Cancellations represented 1.7 per cent of all scheduled flights. The equivalent figures for 2016-17 were 83.0 per cent for arrivals, 83.8 per cent for departures and 1.8 per cent for cancellations.

The 2017-18 on time arrivals figure was below the long term average performance for all routes of 82.7 per cent and the on time departures figure was also below the long term average of 84.0 per cent. The rate of cancellations was higher than the long term average of 1.4 per cent.

Virgin Australia achieved the highest on time arrivals among the major domestic airlines at 82.6 per cent, followed by Qantas at 82.3 per cent, Jetstar at 77.8 per cent and Tigerair Australia at 69.4 per cent. QantasLink was the best performing regional airline for on time arrivals at 84.4 per cent, followed by Regional Express at 80.9 per cent and Virgin Australia Regional Airlines at 79.7 per cent. The Qantas network (Qantas and QantasLink combined operations) recorded 83.4 per cent for on time arrivals while the Virgin Australia network (Virgin Australia and Virgin Australia Regional Airlines combined operations) recorded 82.4 per cent.

Virgin Australia also achieved the highest level of on time departures for 2017-18 at 84.7 per cent, followed by Qantas at 82.8 per cent, Jetstar at 75.2 per cent and Tigerair Australia at 71.5 per cent. The regional airlines were led by QantasLink at 84.7 per cent, followed by Regional Express at 83.8 per cent and Virgin Australia Regional Airlines at 82.0 per cent. The Qantas network recorded 83.8 per cent for on time departures while the Virgin Australia network recorded 84.6 per cent.

Virgin Australia Regional Airlines and Tigerair Australia had the highest percentage of cancellations at 2.6 per cent during 2017-18, followed by QantasLink at 2.3 per cent, Virgin Australia at 1.6 per cent, Qantas at 1.5 per cent and Jetstar and Regional Express at 1.3 per cent.

Airlines' on time performance varies across the routes they serve. Individual route data by specific airline for 67 routes are shown on pages 9-23.

Of the 64 routes which met the criteria for on time performance reporting for all 12 months in 2017-18, the Adelaide-Gold Coast route had the highest percentage of on time arrivals at 92.1 per cent and the Adelaide-Port Lincoln route had the highest percentage of on time departures at 92.6 per cent. The Hobart-Melbourne route had the lowest percentage of on time arrivals at 68.9 per cent and the Sunshine Coast-Melbourne route had the lowest percentage of on time departures at 68.3 per cent.

Cancellations were highest on the Sydney-Melbourne and Melbourne-Sydney routes at 4.1 per cent, followed by the Canberra-Sydney route at 4.0 per cent, the Sydney-Canberra route at

3.9 per cent, the Port Hedland-Perth route at 3.4 per cent and the Alice Springs-Darwin route at 3.1 per cent.

Newman Airport recorded the highest percentage of on time arrivals at 90.7 per cent and Port Lincoln Airport recorded the highest percentage of on time departures at 90.6 per cent. Port Macquarie Airport recorded the lowest percentage of on time arrivals at 73.1 per cent and Ayers Rock Airport recorded the lowest percentage of on time departures at 70.1 per cent. These figures only refer to reported routes and do not cover all flights at these airports.

Table 1 On time performance for the year ended June 2018 — Total Industry

	Sectors		Arrivals On Time		Departures On Time		Cancellations	
	Scheduled	Flown	No.	%	No.	%	No.	%
Jetstar	85 830	84 709	65 882	77.8	63 735	75.2	1 121	1.3
Qantas	107 009	105 368	86 766	82.3	87 253	82.8	1 641	1.5
QantasLink	119 520	116 744	98 504	84.4	98 836	84.7	2 776	2.3
Regional Express	72 491	71 572	57 886	80.9	59 968	83.8	919	1.3
Tigerair Australia	29 734	28 971	20 092	69.4	20 710	71.5	763	2.6
Virgin Australia	137 836	135 623	112 051	82.6	114 928	84.7	2 213	1.6
Virgin Australia Regional Airlines	9 816	9 562	7 617	79.7	7 843	82.0	254	2.6
All Airlines	562 236	552 549	448 798	81.2	453 273	82.0	9 687	1.7
Qantas - all QF designated services	226 529	222 112	185 270	83.4	186 089	83.8	4 417	1.9
Virgin Australia - all VA designated services	147 652	145 185	119 668	82.4	122 771	84.6	2 467	1.7

Total airline network data (including routes not shown in this report).

Airlines' on time performance varies across the routes they serve. Individual route data by specific airline for 66 routes are shown on pages 9-23.

Table 2 Top ten routes for on time performance for the year ended June 2018 (routes for participating airlines only and with published data for the 12 month period)

Arrivals		Departures	
Route	On Time (%)	Route	On Time (%)
Adelaide-Gold Coast	92.1	Adelaide-Port Lincoln	92.6
Townsville-Cairns	91.5	Darwin-Alice Springs	92.4
Cairns-Townsville	91.3	Perth-Newman	92.0
Perth-Darwin	91.3	Townsville-Cairns	91.5
Darwin-Alice Springs	91.2	Cairns-Townsville	91.4
Perth-Newman	90.7	Brisbane-Hobart	90.9
Kalgoorlie-Perth	90.6	Port Lincoln-Adelaide	90.6
Newman-Perth	90.5	Perth-Kalgoorlie	90.4
Perth-Kalgoorlie	90.5	Adelaide-Gold Coast	90.1
Adelaide-Port Lincoln	90.3	Kalgoorlie-Perth	90.0

Table 3 Top ten airports for on time performance for the year ended June 2018 (airports for participating airlines and reported routes only and with published data for the 12 month period)

Arrivals		Departures	
Airport	On Time (%)	Airport	On Time (%)
Newman	90.7	Port Lincoln	90.6
Kalgoorlie	90.5	Kalgoorlie	90.0
Port Lincoln	90.3	Newman	90.0
Karratha	88.1	Port Hedland	88.3
Proserpine	88.0	Karratha	88.2
Port Hedland	87.8	Alice Springs	86.3
Hamilton Island	87.8	Perth	85.9
Alice Springs	86.5	Canberra	85.7
Emerald	86.5	Townsville	85.5
Mackay	86.1	Mackay	85.5

Total industry on time performance

Figure 1 On time performance (by month from June 2013)—Total Industry

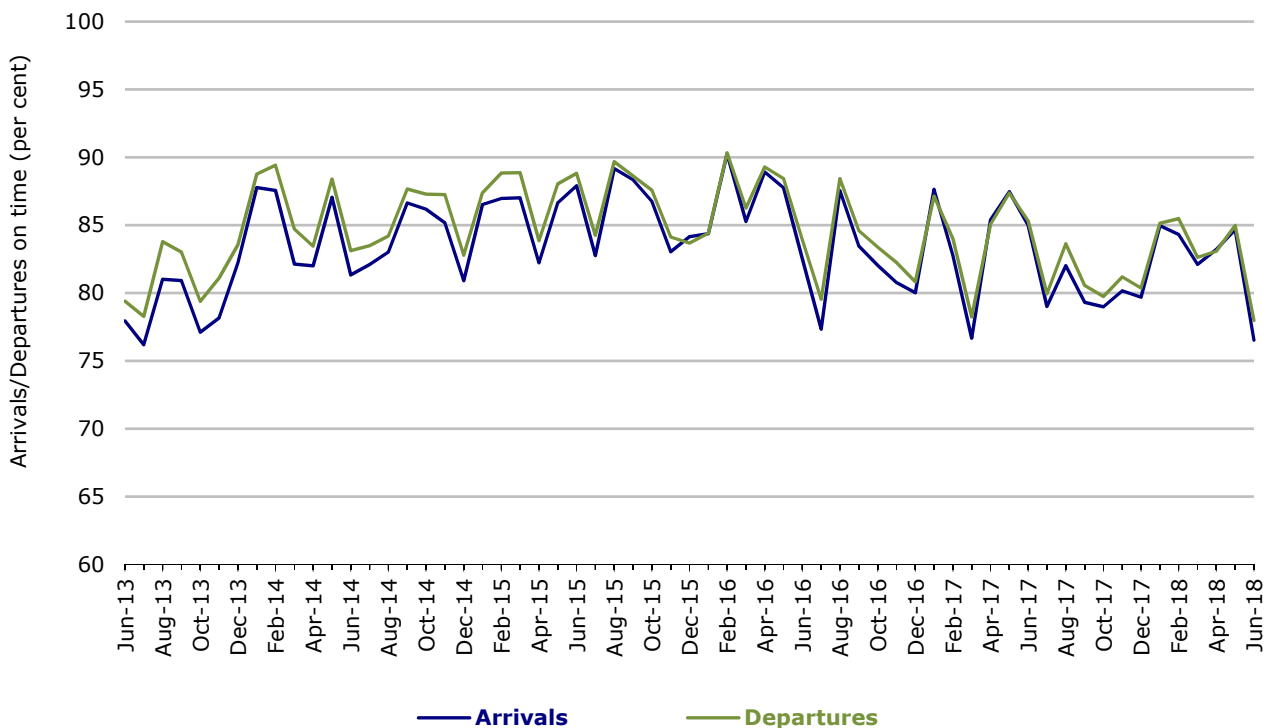
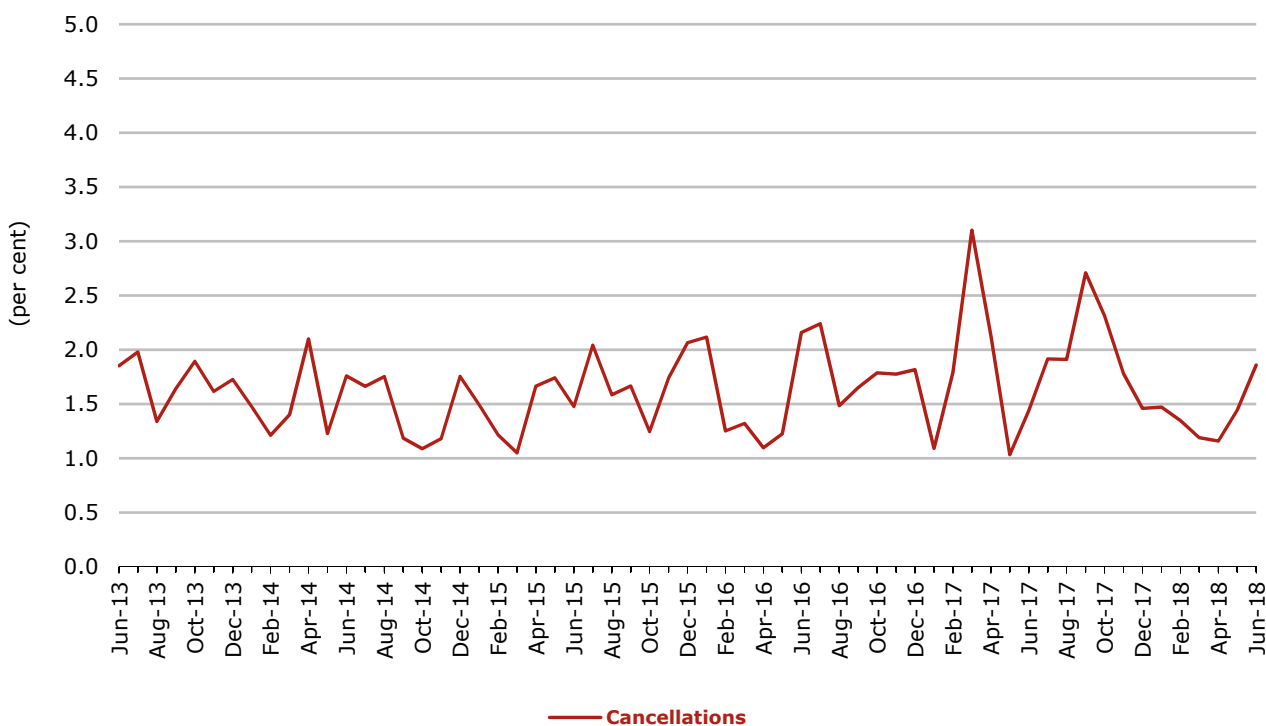


Figure 2 Cancellations (by month from June 2013)—Total Industry



Major domestic airlines on time performance

Figure 3 On time performance (by month from June 2013)—Jetstar

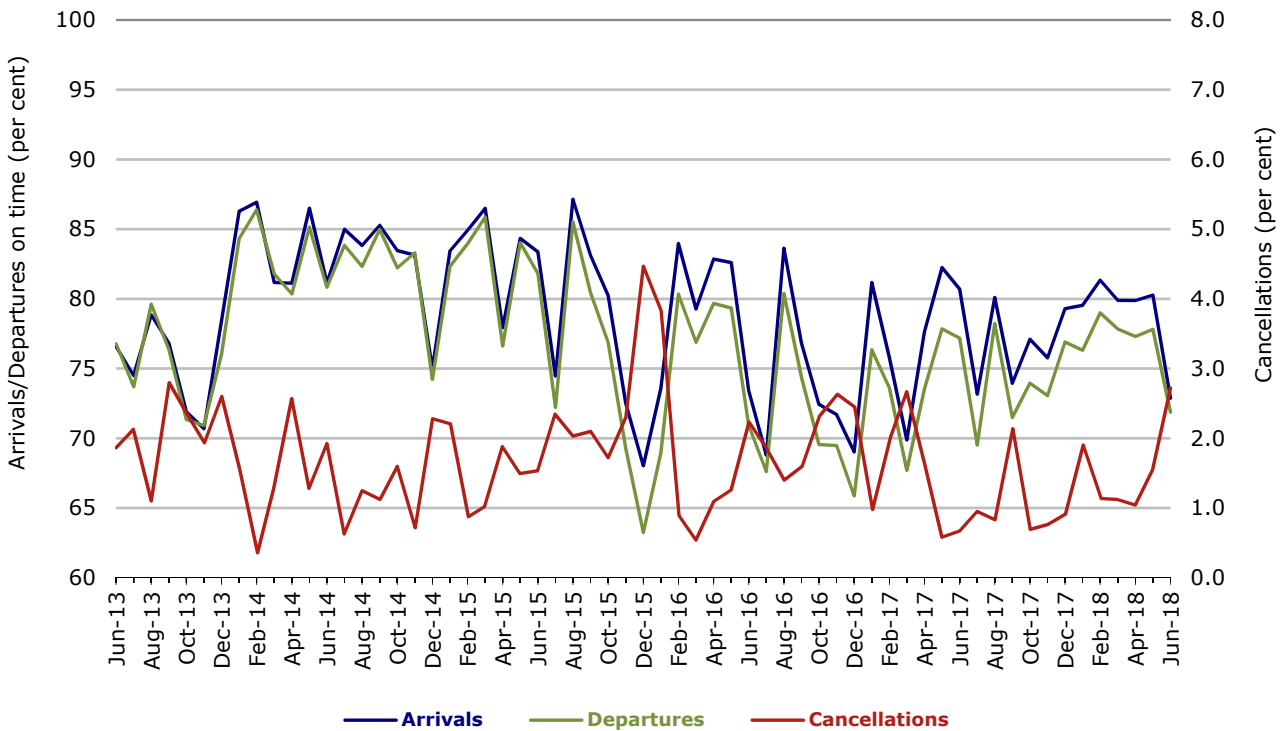


Figure 4 On time performance (by month from June 2013)—Qantas

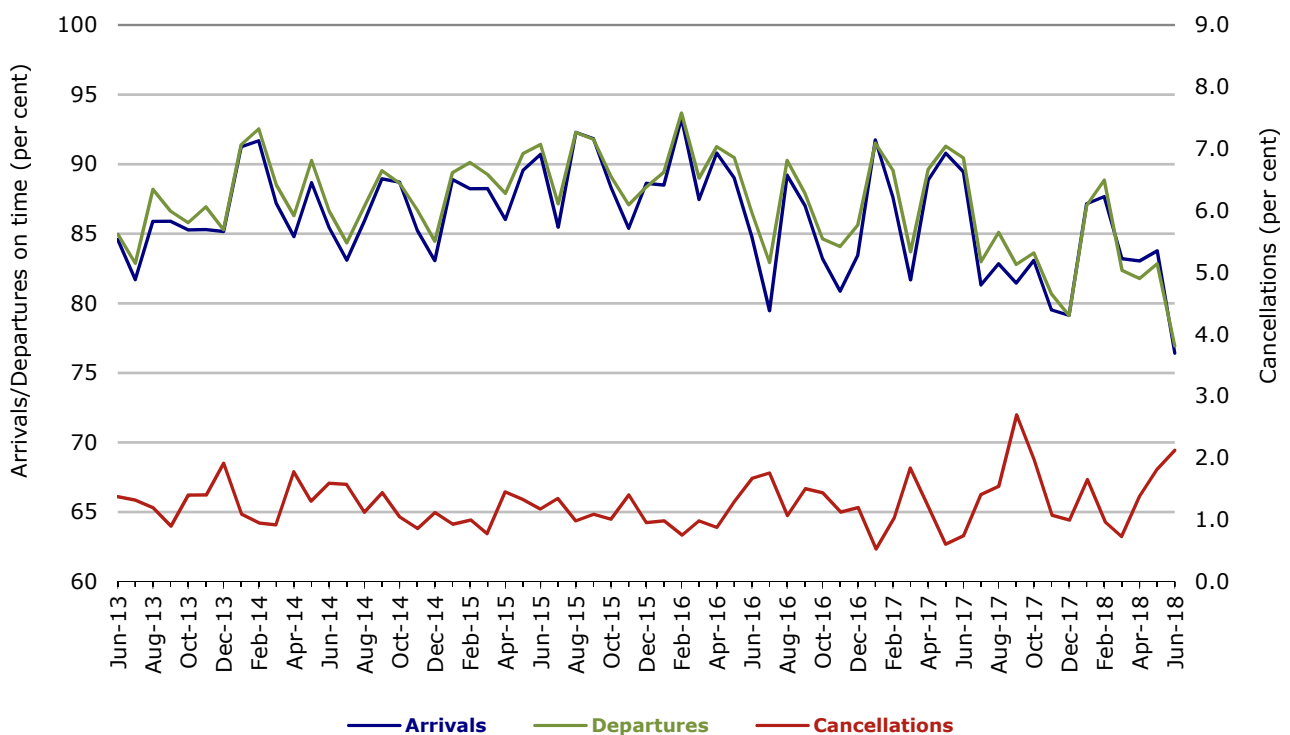


Figure 5 On time performance (by month from June 2013)—Tigerair Australia

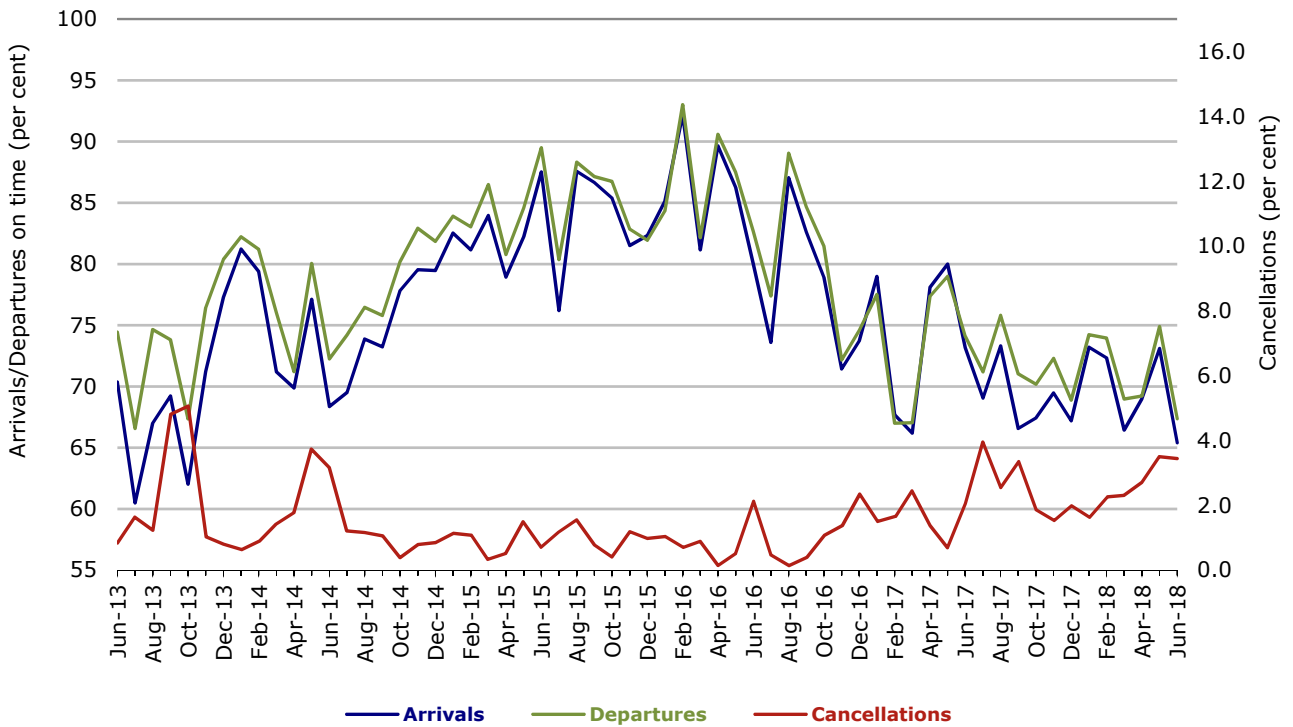
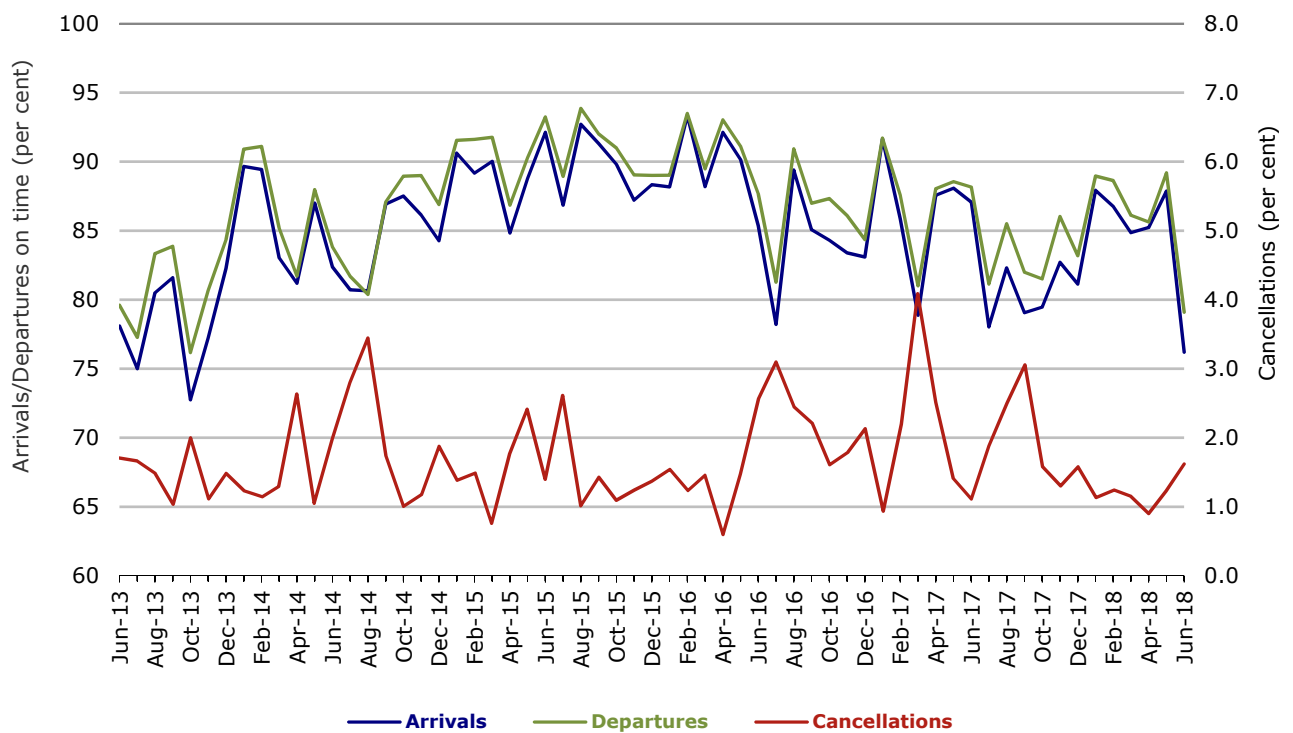


Figure 6 On time performance (by month from June 2013)—Virgin Australia



In January 2016, Virgin Australia transferred their ATR fleet from Virgin Australia Regional Airlines to Virgin Australia.

Major regional airlines on time performance

Figure 7 On time performance (by month from June 2013)—QantasLink

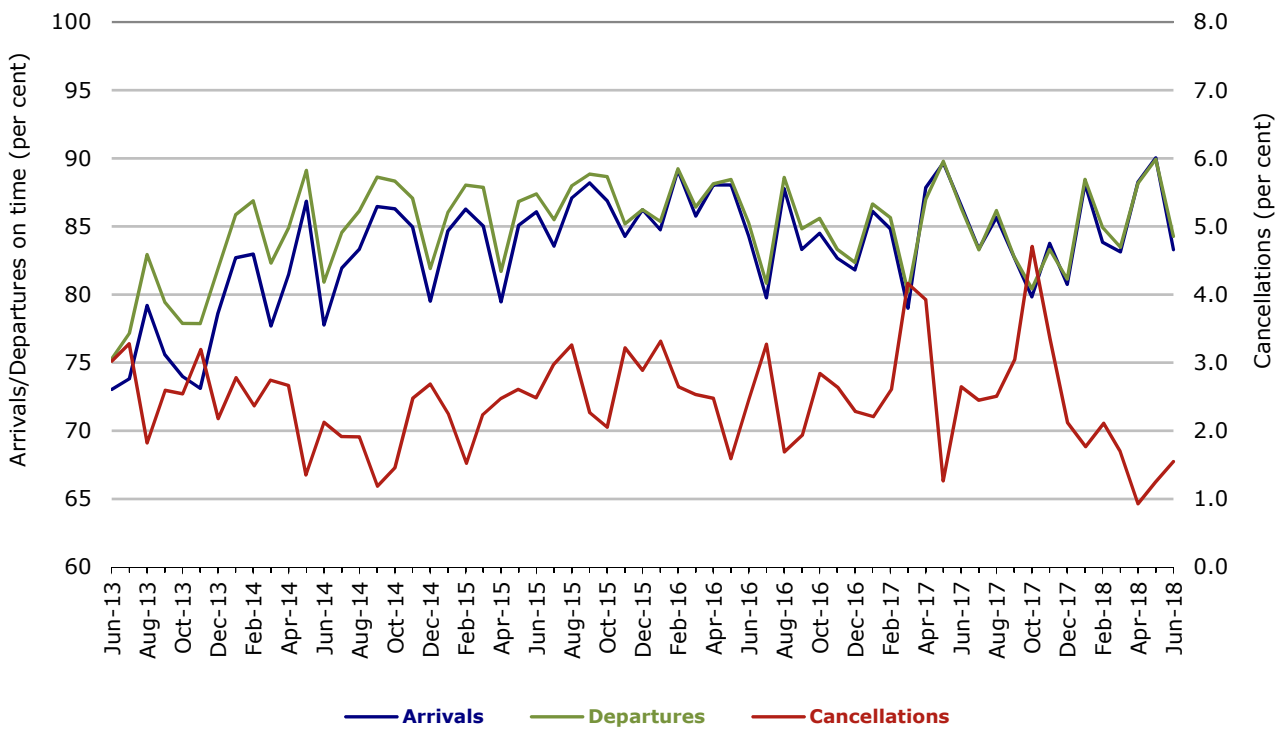


Figure 8 On time performance (by month from June 2013)—Regional Express

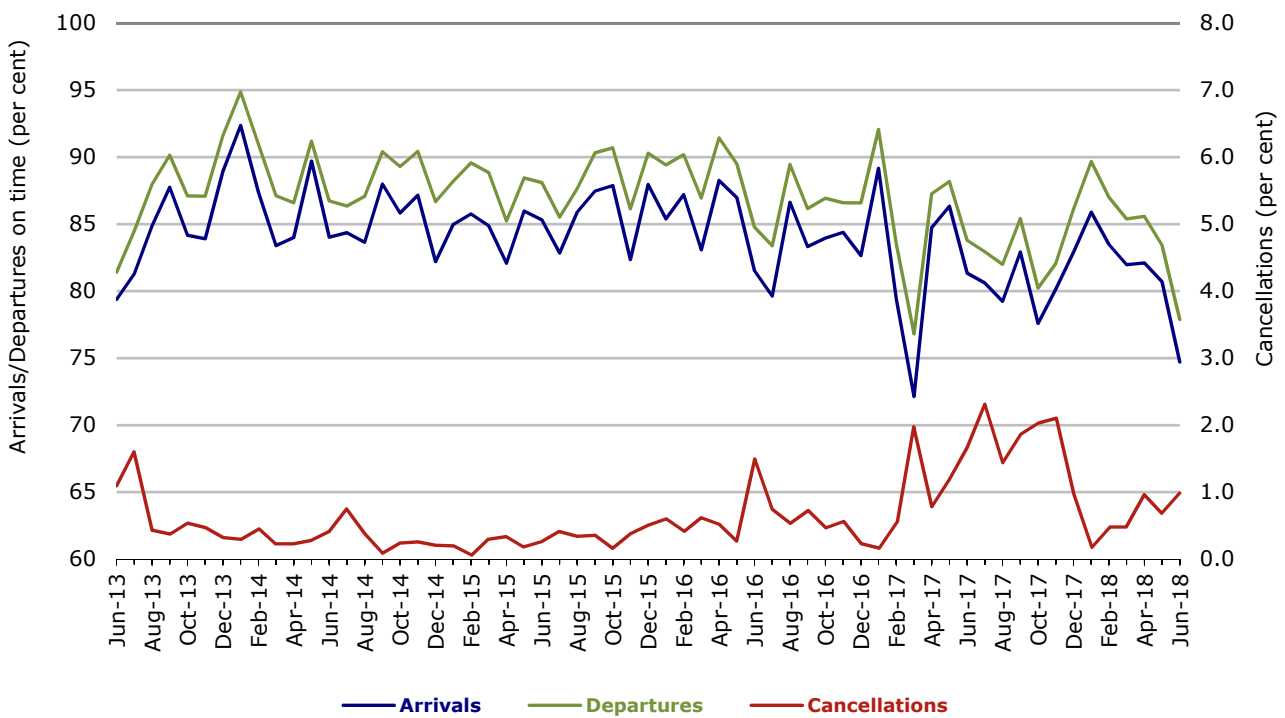
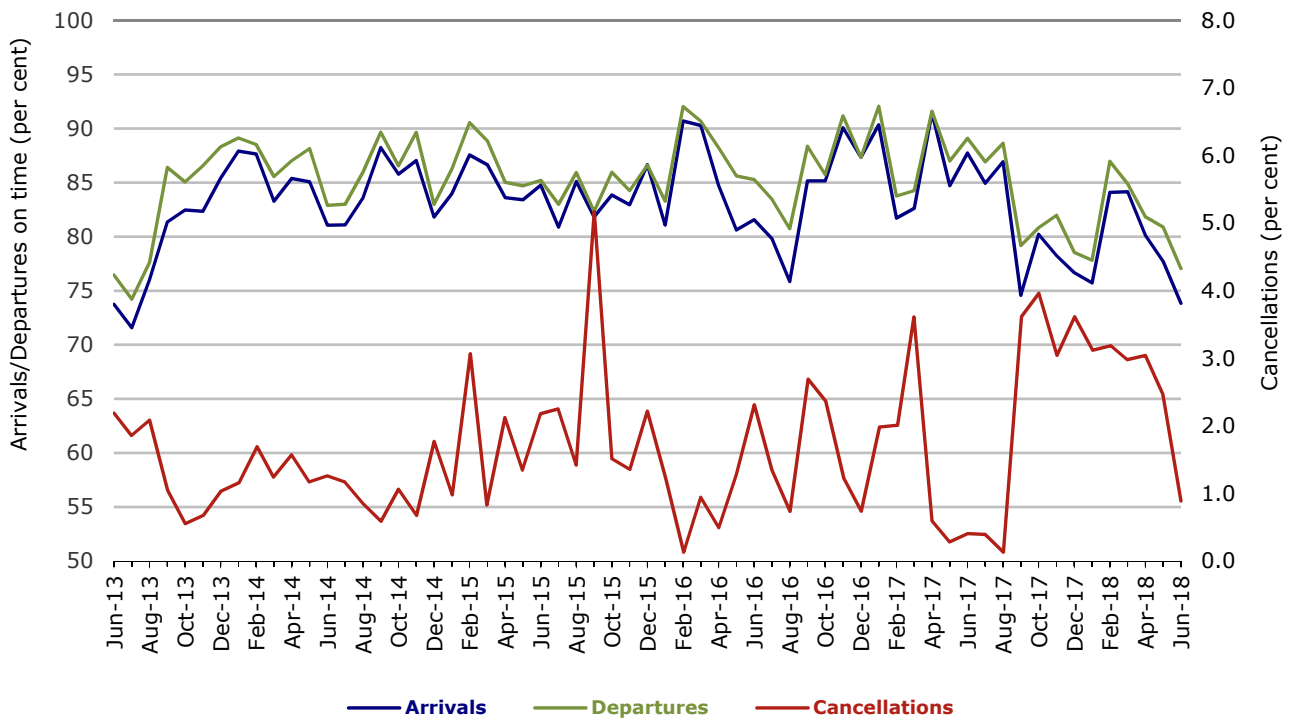


Figure 9 On time performance (by month from June 2013)
Virgin Australia Regional Airlines



In January 2016, Virgin Australia transferred their ATR fleet from Virgin Australia Regional Airlines to Virgin Australia.

Individual routes

On time performance is reported for all routes where the passenger load averages over 8000 passengers per month over the previous six months, and where two or more airlines operate in competition on those routes. There are now 66 routes which meet this definition. Over time, however, routes which meet this definition may change as airline networks and traffic levels vary.

	Sectors		Arrivals On Time		Departures On Time		Cancellations	
	Sched.	Flown	No.	%	No.	%	No.	%
Adelaide-Alice Springs								
Qantas	364	363	315	86.8	305	84.0	1	0.3
Virgin Australia	72	72	66	91.7	64	88.9	0	0.0
Virgin Australia Regional Airlines	175	166	99	59.6	111	66.9	9	5.1
All Airlines	611	601	480	79.9	480	79.9	10	1.6
Adelaide-Brisbane								
Jetstar	323	323	249	77.1	244	75.5	0	0.0
Qantas	1 028	1 027	889	86.6	892	86.9	1	0.1
QantasLink	438	419	344	82.1	373	89.0	19	4.3
Tigerair Australia	331	327	224	68.5	246	75.2	4	1.2
Virgin Australia	1 265	1 255	1 138	90.7	1 106	88.1	10	0.8
All Airlines	3 385	3 351	2 844	84.9	2 861	85.4	34	1.0
Adelaide-Canberra								
Qantas	523	523	463	88.5	457	87.4	0	0.0
Virgin Australia	312	311	277	89.1	271	87.1	1	0.3
All Airlines	835	834	740	88.7	728	87.3	1	0.1
Adelaide-Gold Coast								
Jetstar	368	367	337	91.8	319	86.9	1	0.3
Virgin Australia	378	377	348	92.3	351	93.1	1	0.3
All Airlines	746	744	685	92.1	670	90.1	2	0.3
Adelaide-Melbourne								
Jetstar	1 269	1 236	984	79.6	902	73.0	33	2.6
Qantas	3 293	3 276	2 821	86.1	2 795	85.3	17	0.5
Tigerair Australia	906	885	592	66.9	598	67.6	21	2.3
Virgin Australia	3 300	3 254	2 698	82.9	2 715	83.4	46	1.4
All Airlines	8 768	8 651	7 095	82.0	7 010	81.0	117	1.3
Adelaide-Perth								
Jetstar	321	320	247	77.2	238	74.4	1	0.3
Qantas	1 138	1 136	1 018	89.6	1 004	88.4	2	0.2
QantasLink	200	187	152	81.3	174	93.0	13	6.5
Virgin Australia	578	577	516	89.4	533	92.4	1	0.2
Virgin Australia Regional Airlines	333	318	202	63.5	227	71.4	15	4.5
All Airlines	2 570	2 538	2 135	84.1	2 176	85.7	32	1.2
Adelaide-Port Lincoln								
QantasLink	1 289	1 279	1 157	90.5	1 174	91.8	10	0.8
Regional Express	2 375	2 336	2 109	90.3	2 172	93.0	39	1.6
All Airlines	3 664	3 615	3 266	90.3	3 346	92.6	49	1.3
Adelaide-Sydney								
Jetstar	1 297	1 258	1 047	83.2	1 007	80.0	39	3.0
Qantas	2 732	2 718	2 329	85.7	2 389	87.9	14	0.5
QantasLink	346	318	255	80.2	235	73.9	28	8.1
Tigerair Australia	562	550	326	59.3	332	60.4	12	2.1
Virgin Australia	1 895	1 882	1 612	85.7	1 635	86.9	13	0.7
All Airlines	6 832	6 726	5 569	82.8	5 598	83.2	106	1.6

	<i>Sectors</i>		<i>Arrivals On Time</i>		<i>Departures On Time</i>		<i>Cancellations</i>	
	<i>Sched.</i>	<i>Flown</i>	<i>No.</i>	<i>%</i>	<i>No.</i>	<i>%</i>	<i>No.</i>	<i>%</i>
Albury-Sydney								
QantasLink	1 110	1 091	842	77.2	850	77.9	19	1.7
Regional Express	1 099	1 089	906	83.2	928	85.2	10	0.9
Virgin Australia	702	694	553	79.7	550	79.3	8	1.1
All Airlines	2 911	2 874	2 301	80.1	2 328	81.0	37	1.3
Alice Springs-Adelaide								
Qantas	364	362	314	86.7	302	83.4	2	0.5
Virgin Australia	72	72	66	91.7	62	86.1	0	0.0
Virgin Australia Regional Airlines	171	165	122	73.9	125	75.8	6	3.5
All Airlines	607	599	502	83.8	489	81.6	8	1.3
Alice Springs-Darwin								
QantasLink	641	626	588	93.9	589	94.1	15	2.3
Virgin Australia	70	70	63	90.0	63	90.0	0	0.0
Virgin Australia Regional Airlines	173	161	113	70.2	115	71.4	12	6.9
All Airlines	884	857	764	89.1	767	89.5	27	3.1
Armidale-Sydney								
QantasLink	1 334	1 301	951	73.1	958	73.6	33	2.5
Regional Express	835	823	563	68.4	611	74.2	12	1.4
All Airlines	2 169	2 124	1 514	71.3	1 569	73.9	45	2.1
Ayers Rock-Sydney								
Jetstar	331	329	238	72.3	206	62.6	2	0.6
Virgin Australia	365	364	304	83.5	280	76.9	1	0.3
All Airlines	696	693	542	78.2	486	70.1	3	0.4
Ballina-Sydney								
Jetstar	998	995	780	78.4	696	69.9	3	0.3
Regional Express	264	257	174	67.7	185	72.0	7	2.7
Virgin Australia	410	407	350	86.0	354	87.0	3	0.7
All Airlines	1 672	1 659	1 304	78.6	1 235	74.4	13	0.8
Brisbane-Adelaide								
Jetstar	323	323	272	84.2	260	80.5	0	0.0
Qantas	1 057	1 054	930	88.2	939	89.1	3	0.3
QantasLink	438	421	366	86.9	383	91.0	17	3.9
Tigerair Australia	332	328	282	86.0	291	88.7	4	1.2
Virgin Australia	1 236	1 229	1 038	84.5	1 074	87.4	7	0.6
All Airlines	3 386	3 355	2 888	86.1	2 947	87.8	31	0.9
Brisbane-Bundaberg								
QantasLink	1 381	1 360	1 162	85.4	1 160	85.3	21	1.5
Virgin Australia	365	364	295	81.0	309	84.9	1	0.3
All Airlines	1 746	1 724	1 457	84.5	1 469	85.2	22	1.3
Brisbane-Cairns								
Jetstar	1 196	1 181	1 028	87.0	959	81.2	15	1.3
Qantas	1 202	1 197	1 065	89.0	1 075	89.8	5	0.4
QantasLink	260	260	193	74.2	191	73.5	0	0.0
Tigerair Australia	472	463	373	80.6	376	81.2	9	1.9
Virgin Australia	1 491	1 489	1 324	88.9	1 285	86.3	2	0.1
All Airlines	4 621	4 590	3 983	86.8	3 886	84.7	31	0.7
Brisbane-Canberra								
Qantas	314	314	267	85.0	271	86.3	0	0.0
QantasLink	1 495	1 462	1 201	82.1	1 224	83.7	33	2.2
Tigerair Australia	125	125	78	62.4	99	79.2	0	0.0
Virgin Australia	1 169	1 165	1 011	86.8	1 014	87.0	4	0.3
All Airlines	3 103	3 066	2 557	83.4	2 608	85.1	37	1.2

	<i>Sectors</i>		<i>Arrivals On Time</i>		<i>Departures On Time</i>		<i>Cancellations</i>	
	<i>Sched.</i>	<i>Flown</i>	<i>No.</i>	<i>%</i>	<i>No.</i>	<i>%</i>	<i>No.</i>	<i>%</i>
Brisbane-Darwin								
Jetstar	287	285	257	90.2	253	88.8	2	0.7
Qantas	514	513	467	91.0	456	88.9	1	0.2
Tigerair Australia	217	210	161	76.7	168	80.0	7	3.2
Virgin Australia	370	369	287	77.8	313	84.8	1	0.3
All Airlines	1 388	1 377	1 172	85.1	1 190	86.4	11	0.8
Brisbane-Emerald								
QantasLink	1 273	1 261	1 085	86.0	1 093	86.7	12	0.9
Virgin Australia	619	618	540	87.4	552	89.3	1	0.2
All Airlines	1 892	1 879	1 625	86.5	1 645	87.5	13	0.7
Brisbane-Gladstone								
QantasLink	1 540	1 524	1 261	82.7	1 258	82.5	16	1.0
Virgin Australia	880	876	718	82.0	795	90.8	4	0.5
All Airlines	2 420	2 400	1 979	82.5	2 053	85.5	20	0.8
Brisbane-Hamilton Island								
QantasLink	366	353	308	87.3	297	84.1	13	3.6
Virgin Australia	364	362	321	88.7	320	88.4	2	0.5
All Airlines	730	715	629	88.0	617	86.3	15	2.1
Brisbane-Hobart								
Jetstar	331	331	301	90.9	304	91.8	0	0.0
Qantas	5	5	2	40.0	4	80.0	0	0.0
Virgin Australia	392	392	344	87.8	354	90.3	0	0.0
All Airlines	728	728	647	88.9	662	90.9	0	0.0
Brisbane-Mackay								
Jetstar	435	433	332	76.7	323	74.6	2	0.5
QantasLink	1 298	1 276	1 109	86.9	1 113	87.2	22	1.7
Virgin Australia	1 650	1 643	1 446	88.0	1 437	87.5	7	0.4
All Airlines	3 383	3 352	2 887	86.1	2 873	85.7	31	0.9
Brisbane-Melbourne								
Jetstar	1 522	1 486	1 107	74.5	1 018	68.5	36	2.4
Qantas	4 876	4 845	3 863	79.7	4 034	83.3	31	0.6
QantasLink	125	121	95	78.5	105	86.8	4	3.2
Tigerair Australia	1 533	1 480	1 013	68.4	1 065	72.0	53	3.5
Virgin Australia	4 557	4 434	3 368	76.0	3 837	86.5	123	2.7
All Airlines	12 613	12 366	9 446	76.4	10 059	81.3	247	2.0
Brisbane-Moranbah								
			(To September 2017 only)					
QantasLink	241	237	205	86.5	209	88.2	4	1.7
Virgin Australia	131	131	118	90.1	121	92.4	0	0.0
All Airlines	372	368	323	87.8	330	89.7	4	1.1
Brisbane-Mount Isa								
QantasLink	655	645	448	69.5	527	81.7	10	1.5
Virgin Australia	208	208	182	87.5	193	92.8	0	0.0
All Airlines	863	853	630	73.9	720	84.4	10	1.2
Brisbane-Newcastle								
Jetstar	1 033	1 009	786	77.9	769	76.2	24	2.3
QantasLink	845	816	681	83.5	696	85.3	29	3.4
Virgin Australia	995	988	874	88.5	891	90.2	7	0.7
All Airlines	2 873	2 813	2 341	83.2	2 356	83.8	60	2.1

	<i>Sectors</i>		<i>Arrivals On Time</i>		<i>Departures On Time</i>		<i>Cancellations</i>	
	<i>Sched.</i>	<i>Flown</i>	<i>No.</i>	<i>%</i>	<i>No.</i>	<i>%</i>	<i>No.</i>	<i>%</i>
Brisbane-Perth								
Qantas	1 621	1 617	1 301	80.5	1 317	81.4	4	0.2
Tigerair Australia	148	146	126	86.3	129	88.4	2	1.4
Virgin Australia	1 272	1 269	987	77.8	1 017	80.1	3	0.2
All Airlines	3 041	3 032	2 414	79.6	2 463	81.2	9	0.3
Brisbane-Proserpine								
Jetstar	401	401	357	89.0	344	85.8	0	0.0
Tigerair Australia	139	137	126	92.0	128	93.4	2	1.4
Virgin Australia	379	378	338	89.4	336	88.9	1	0.3
All Airlines	919	916	821	89.6	808	88.2	3	0.3
Brisbane-Rockhampton								
QantasLink	1 999	1 977	1 596	80.7	1 618	81.8	22	1.1
Virgin Australia	1 676	1 672	1 203	71.9	1 318	78.8	4	0.2
All Airlines	3 675	3 649	2 799	76.7	2 936	80.5	26	0.7
Brisbane-Sydney								
Jetstar	2 080	2 001	1 499	74.9	1 468	73.4	79	3.8
Qantas	7 331	7 198	5 887	81.8	5 901	82.0	133	1.8
QantasLink	89	85	60	70.6	57	67.1	4	4.5
Tigerair Australia	1 320	1 275	875	68.6	907	71.1	45	3.4
Virgin Australia	6 186	6 024	5 079	84.3	5 256	87.3	162	2.6
All Airlines	17 006	16 583	13 400	80.8	13 589	81.9	423	2.5
Brisbane-Townsville								
Jetstar	575	574	449	78.2	460	80.1	1	0.2
Qantas	863	861	695	80.7	686	79.7	2	0.2
QantasLink	872	849	702	82.7	740	87.2	23	2.6
Virgin Australia	1 628	1 613	1 409	87.4	1 383	85.7	15	0.9
All Airlines	3 938	3 897	3 255	83.5	3 269	83.9	41	1.0
Broome-Perth								
Qantas	67	66	52	78.8	47	71.2	1	1.5
QantasLink	1 035	1 004	864	86.1	840	83.7	31	3.0
Virgin Australia	48	48	41	85.4	32	66.7	0	0.0
Virgin Australia Regional Airlines	821	799	633	79.2	621	77.7	22	2.7
All Airlines	1 971	1 917	1 590	82.9	1 540	80.3	54	2.7
Bundaberg-Brisbane								
QantasLink	1 382	1 361	1 155	84.9	1 172	86.1	21	1.5
Virgin Australia	365	364	283	77.7	297	81.6	1	0.3
All Airlines	1 747	1 725	1 438	83.4	1 469	85.2	22	1.3
Cairns-Brisbane								
Jetstar	1 196	1 186	1 013	85.4	964	81.3	10	0.8
Qantas	1 204	1 197	1 040	86.9	1 047	87.5	7	0.6
QantasLink	259	258	186	72.1	200	77.5	1	0.4
Tigerair Australia	472	463	374	80.8	353	76.2	9	1.9
Virgin Australia	1 489	1 487	1 322	88.9	1 292	86.9	2	0.1
All Airlines	4 620	4 591	3 935	85.7	3 856	84.0	29	0.6
Cairns-Melbourne								
Jetstar	1 201	1 187	894	75.3	899	75.7	14	1.2
Qantas	493	492	345	70.1	346	70.3	1	0.2
Tigerair Australia	477	470	308	65.5	314	66.8	7	1.5
Virgin Australia	409	408	275	67.4	287	70.3	1	0.2
All Airlines	2 580	2 557	1 822	71.3	1 846	72.2	23	0.9

	<i>Sectors</i>		<i>Arrivals On Time</i>		<i>Departures On Time</i>		<i>Cancellations</i>	
	<i>Sched.</i>	<i>Flown</i>	<i>No.</i>	<i>%</i>	<i>No.</i>	<i>%</i>	<i>No.</i>	<i>%</i>
Cairns-Sydney								
Jetstar	1 160	1 151	936	81.3	937	81.4	9	0.8
Qantas	929	929	838	90.2	823	88.6	0	0.0
Tigerair Australia	536	527	391	74.2	385	73.1	9	1.7
Virgin Australia	1 041	1 038	907	87.4	885	85.3	3	0.3
All Airlines	3 666	3 645	3 072	84.3	3 030	83.1	21	0.6
Cairns-Townsville								
QantasLink	1 620	1 610	1 487	92.4	1 481	92.0	10	0.6
Regional Express	374	362	314	86.7	321	88.7	12	3.2
All Airlines	1 994	1 972	1 801	91.3	1 802	91.4	22	1.1
Canberra-Adelaide								
Qantas	523	523	480	91.8	467	89.3	0	0.0
Virgin Australia	312	310	259	83.5	257	82.9	2	0.6
All Airlines	835	833	739	88.7	724	86.9	2	0.2
Canberra-Brisbane								
Qantas	328	327	311	95.1	310	94.8	1	0.3
QantasLink	1 479	1 444	1 218	84.3	1 205	83.4	35	2.4
Tigerair Australia	125	125	85	68.0	75	60.0	0	0.0
Virgin Australia	1 166	1 163	1 026	88.2	1 032	88.7	3	0.3
All Airlines	3 098	3 059	2 640	86.3	2 622	85.7	39	1.3
Canberra-Melbourne								
Qantas	2 455	2 435	2 176	89.4	2 215	91.0	20	0.8
QantasLink	992	929	783	84.3	806	86.8	63	6.4
Tigerair Australia	397	388	231	59.5	246	63.4	9	2.3
Virgin Australia	1 960	1 916	1 566	81.7	1 650	86.1	44	2.2
All Airlines	5 804	5 668	4 756	83.9	4 917	86.8	136	2.3
Canberra-Sydney								
Qantas	192	190	178	93.7	183	96.3	2	1.0
QantasLink	5 201	4 981	4 240	85.1	4 209	84.5	220	4.2
Virgin Australia	2 868	2 758	2 339	84.8	2 334	84.6	110	3.8
All Airlines	8 261	7 929	6 757	85.2	6 726	84.8	332	4.0
Coffs Harbour-Sydney								
QantasLink	1 721	1 687	1 392	82.5	1 403	83.2	34	2.0
Tigerair Australia	155	155	117	75.5	114	73.5	0	0.0
Virgin Australia	589	575	496	86.3	510	88.7	14	2.4
All Airlines	2 465	2 417	2 005	83.0	2 027	83.9	48	1.9
Darwin-Alice Springs								
QantasLink	641	629	591	94.0	592	94.1	12	1.9
Virgin Australia	70	70	65	92.9	67	95.7	0	0.0
Virgin Australia Regional Airlines	171	160	127	79.4	135	84.4	11	6.4
All Airlines	882	859	783	91.2	794	92.4	23	2.6
Darwin-Brisbane								
Jetstar	288	285	255	89.5	233	81.8	3	1.0
Qantas	514	512	456	89.1	422	82.4	2	0.4
Tigerair Australia	217	210	190	90.5	186	88.6	7	3.2
Virgin Australia	371	370	279	75.4	298	80.5	1	0.3
All Airlines	1 390	1 377	1 180	85.7	1 139	82.7	13	0.9
Darwin-Melbourne								
Jetstar	315	314	242	77.1	195	62.1	1	0.3
Qantas	389	385	322	83.6	305	79.2	4	1.0
Virgin Australia	370	369	330	89.4	334	90.5	1	0.3
All Airlines	1 074	1 068	894	83.7	834	78.1	6	0.6

	Sectors		Arrivals On Time		Departures On Time		Cancellations	
	Sched.	Flown	No.	%	No.	%	No.	%
Darwin-Perth								
Qantas	391	390	349	89.5	340	87.2	1	0.3
Virgin Australia	291	291	233	80.1	236	81.1	0	0.0
Virgin Australia Regional Airlines	74	68	50	73.5	52	76.5	6	8.1
All Airlines	756	749	632	84.4	628	83.8	7	0.9
Darwin-Sydney								
Jetstar	283	279	227	81.4	220	78.9	4	1.4
Qantas	577	575	474	82.4	425	73.9	2	0.3
Virgin Australia	368	367	263	71.7	280	76.3	1	0.3
All Airlines	1 228	1 221	964	79.0	925	75.8	7	0.6
Dubbo-Sydney								
QantasLink	1 287	1 262	982	77.8	988	78.3	25	1.9
Regional Express	1 598	1 579	1 243	78.7	1 323	83.8	19	1.2
All Airlines	2 885	2 841	2 225	78.3	2 311	81.3	44	1.5
Emerald-Brisbane								
QantasLink	1 271	1 251	1 010	80.7	1 042	83.3	20	1.6
Virgin Australia	619	618	546	88.3	549	88.8	1	0.2
All Airlines	1 890	1 869	1 556	83.3	1 591	85.1	21	1.1
Geraldton-Perth								
QantasLink	553	538	491	91.3	490	91.1	15	2.7
Virgin Australia Regional Airlines	610	603	491	81.4	482	79.9	7	1.1
All Airlines	1 163	1 141	982	86.1	972	85.2	22	1.9
Gladstone-Brisbane								
QantasLink	1 537	1 518	1 282	84.5	1 256	82.7	19	1.2
Virgin Australia	882	876	716	81.7	739	84.4	6	0.7
All Airlines	2 419	2 394	1 998	83.5	1 995	83.3	25	1.0
Gold Coast-Adelaide								
Jetstar	367	367	330	89.9	344	93.7	0	0.0
Virgin Australia	380	379	304	80.2	324	85.5	1	0.3
All Airlines	747	746	634	85.0	668	89.5	1	0.1
Gold Coast-Melbourne								
Jetstar	2 300	2 282	1 867	81.8	1 729	75.8	18	0.8
Qantas	385	385	318	82.6	292	75.8	0	0.0
Tigerair Australia	974	957	609	63.6	618	64.6	17	1.7
Virgin Australia	2 239	2 219	1 705	76.8	1 675	75.5	20	0.9
All Airlines	5 898	5 843	4 499	77.0	4 314	73.8	55	0.9
Gold Coast-Sydney								
Jetstar	3 404	3 360	2 630	78.3	2 566	76.4	44	1.3
Qantas	1 146	1 146	990	86.4	966	84.3	0	0.0
QantasLink	257	247	178	72.1	180	72.9	10	3.9
Tigerair Australia	1 336	1 296	834	64.4	829	64.0	40	3.0
Virgin Australia	2 961	2 917	2 400	82.3	2 342	80.3	44	1.5
All Airlines	9 104	8 966	7 032	78.4	6 883	76.8	138	1.5
Hamilton Island-Brisbane								
QantasLink	366	352	288	81.8	292	83.0	14	3.8
Virgin Australia	365	362	329	90.9	317	87.6	3	0.8
All Airlines	731	714	617	86.4	609	85.3	17	2.3

	<i>Sectors</i>		<i>Arrivals On Time</i>		<i>Departures On Time</i>		<i>Cancellations</i>	
	<i>Sched.</i>	<i>Flown</i>	<i>No.</i>	<i>%</i>	<i>No.</i>	<i>%</i>	<i>No.</i>	<i>%</i>
Hamilton Island-Sydney								
Jetstar	315	314	257	81.8	259	82.5	1	0.3
Qantas	143	143	133	93.0	131	91.6	0	0.0
QantasLink	191	176	146	83.0	146	83.0	15	7.9
Virgin Australia	305	300	270	90.0	263	87.7	5	1.6
All Airlines	954	933	806	86.4	799	85.6	21	2.2
Hobart-Brisbane								
Jetstar	331	331	283	85.5	262	79.2	0	0.0
Qantas	5	5	2	40.0	1	20.0	0	0.0
Virgin Australia	393	393	279	71.0	276	70.2	0	0.0
All Airlines	729	729	564	77.4	539	73.9	0	0.0
Hobart-Melbourne								
Jetstar	2 107	2 089	1 291	61.8	1 208	57.8	18	0.9
Qantas	390	388	331	85.3	339	87.4	2	0.5
QantasLink	1 078	1 036	808	78.0	845	81.6	42	3.9
Tigerair Australia	448	445	261	58.7	284	63.8	3	0.7
Virgin Australia	1 680	1 674	1 191	71.1	1 273	76.0	6	0.4
All Airlines	5 703	5 632	3 882	68.9	3 949	70.1	71	1.2
Hobart-Sydney								
Jetstar	986	981	730	74.4	695	70.8	5	0.5
Qantas	193	193	156	80.8	159	82.4	0	0.0
QantasLink	499	483	372	77.0	395	81.8	16	3.2
Virgin Australia	855	847	676	79.8	685	80.9	8	0.9
All Airlines	2 533	2 504	1 934	77.2	1 934	77.2	29	1.1
Kalgoorlie-Perth								
Qantas	130	129	124	96.1	120	93.0	1	0.8
QantasLink	835	820	760	92.7	755	92.1	15	1.8
Virgin Australia	329	322	283	87.9	280	87.0	7	2.1
Virgin Australia Regional Airlines	483	473	413	87.3	414	87.5	10	2.1
All Airlines	1 777	1 744	1 580	90.6	1 569	90.0	33	1.9
Karratha-Perth								
Qantas	198	192	187	97.4	182	94.8	6	3.0
QantasLink	2 003	1 957	1 765	90.2	1 749	89.4	46	2.3
Virgin Australia	60	59	47	79.7	49	83.1	1	1.7
Virgin Australia Regional Airlines	778	750	619	82.5	630	84.0	28	3.6
All Airlines	3 039	2 958	2 618	88.5	2 610	88.2	81	2.7
Launceston-Melbourne								
Jetstar	1 567	1 560	1 095	70.2	1 065	68.3	7	0.4
QantasLink	1 374	1 330	1 101	82.8	1 112	83.6	44	3.2
Virgin Australia	1 169	1 167	921	78.9	999	85.6	2	0.2
All Airlines	4 110	4 057	3 117	76.8	3 176	78.3	53	1.3
Launceston-Sydney								
Jetstar	573	565	416	73.6	402	71.2	8	1.4
Virgin Australia	357	357	283	79.3	276	77.3	0	0.0
All Airlines	930	922	699	75.8	678	73.5	8	0.9
Mackay-Brisbane								
Jetstar	438	431	354	82.1	286	66.4	7	1.6
QantasLink	1 302	1 280	1 066	83.3	1 088	85.0	22	1.7
Virgin Australia	1 650	1 645	1 501	91.2	1 496	90.9	5	0.3
All Airlines	3 390	3 356	2 921	87.0	2 870	85.5	34	1.0

	<i>Sectors</i>		<i>Arrivals On Time</i>		<i>Departures On Time</i>		<i>Cancellations</i>	
	<i>Sched.</i>	<i>Flown</i>	<i>No.</i>	<i>%</i>	<i>No.</i>	<i>%</i>	<i>No.</i>	<i>%</i>
Melbourne-Adelaide								
Jetstar	1 269	1 242	873	70.3	911	73.3	27	2.1
Qantas	3 316	3 306	2 755	83.3	2 793	84.5	10	0.3
Tigerair Australia	907	887	693	78.1	719	81.1	20	2.2
Virgin Australia	3 237	3 194	2 668	83.5	2 749	86.1	43	1.3
All Airlines	8 729	8 629	6 989	81.0	7 172	83.1	100	1.1
Melbourne-Brisbane								
Jetstar	1 521	1 490	1 066	71.5	964	64.7	31	2.0
Qantas	4 956	4 924	3 967	80.6	3 903	79.3	32	0.6
QantasLink	127	123	97	78.9	99	80.5	4	3.1
Tigerair Australia	1 532	1 481	1 056	71.3	1 042	70.4	51	3.3
Virgin Australia	4 479	4 359	3 619	83.0	3 772	86.5	120	2.7
All Airlines	12 615	12 377	9 805	79.2	9 780	79.0	238	1.9
Melbourne-Cairns								
Jetstar	1 200	1 193	922	77.3	889	74.5	7	0.6
Qantas	492	492	378	76.8	383	77.8	0	0.0
Tigerair Australia	477	470	370	78.7	400	85.1	7	1.5
Virgin Australia	409	407	327	80.3	356	87.5	2	0.5
All Airlines	2 578	2 562	1 997	77.9	2 028	79.2	16	0.6
Melbourne-Canberra								
Qantas	2 469	2 449	2 110	86.2	2 106	86.0	20	0.8
QantasLink	994	928	778	83.8	784	84.5	66	6.6
Tigerair Australia	397	391	297	76.0	300	76.7	6	1.5
Virgin Australia	1 958	1 911	1 612	84.4	1 647	86.2	47	2.4
All Airlines	5 818	5 679	4 797	84.5	4 837	85.2	139	2.4
Melbourne-Darwin								
Jetstar	316	315	233	74.0	248	78.7	1	0.3
Qantas	389	388	327	84.3	341	87.9	1	0.3
Virgin Australia	371	369	275	74.5	297	80.5	2	0.5
All Airlines	1 076	1 072	835	77.9	886	82.6	4	0.4
Melbourne-Gold Coast								
Jetstar	2 300	2 286	1 750	76.6	1 752	76.6	14	0.6
Qantas	385	385	322	83.6	327	84.9	0	0.0
Tigerair Australia	973	959	709	73.9	729	76.0	14	1.4
Virgin Australia	2 240	2 221	1 842	82.9	1 884	84.8	19	0.8
All Airlines	5 898	5 851	4 623	79.0	4 692	80.2	47	0.8
Melbourne-Hobart								
Jetstar	2 107	2 096	1 527	72.9	1 606	76.6	11	0.5
Qantas	391	391	327	83.6	344	88.0	0	0.0
QantasLink	1 075	1 036	772	74.5	829	80.0	39	3.6
Tigerair Australia	448	445	334	75.1	367	82.5	3	0.7
Virgin Australia	1 684	1 675	1 345	80.3	1 427	85.2	9	0.5
All Airlines	5 705	5 643	4 305	76.3	4 573	81.0	62	1.1
Melbourne-Launceston								
Jetstar	1 565	1 560	1 209	77.5	1 194	76.5	5	0.3
QantasLink	1 375	1 331	1 103	82.9	1 093	82.1	44	3.2
Virgin Australia	1 167	1 165	921	79.1	987	84.7	2	0.2
All Airlines	4 107	4 056	3 233	79.7	3 274	80.7	51	1.2
Melbourne-Mildura								
QantasLink	1 125	1 106	957	86.5	979	88.5	19	1.7
Regional Express	920	912	744	81.6	790	86.6	8	0.9
Virgin Australia	365	365	286	78.4	306	83.8	0	0.0
All Airlines	2 410	2 383	1 987	83.4	2 075	87.1	27	1.1

	<i>Sectors</i>		<i>Arrivals On Time</i>		<i>Departures On Time</i>		<i>Cancellations</i>	
	<i>Sched.</i>	<i>Flown</i>	<i>No.</i>	<i>%</i>	<i>No.</i>	<i>%</i>	<i>No.</i>	<i>%</i>
Melbourne-Newcastle								
Jetstar	1 299	1 285	953	74.2	891	69.3	14	1.1
Virgin Australia	394	393	317	80.7	331	84.2	1	0.3
All Airlines	1 693	1 678	1 270	75.7	1 222	72.8	15	0.9
Melbourne-Perth								
Jetstar	590	573	494	86.2	473	82.5	17	2.9
Qantas	2 392	2 387	1 812	75.9	1 776	74.4	5	0.2
Tigerair Australia	627	611	432	70.7	447	73.2	16	2.6
Virgin Australia	1 591	1 584	1 200	75.8	1 154	72.9	7	0.4
All Airlines	5 200	5 155	3 938	76.4	3 850	74.7	45	0.9
Melbourne-Sunshine Coast								
Jetstar	993	993	812	81.8	786	79.2	0	0.0
QantasLink	30	30	23	76.7	24	80.0	0	0.0
Virgin Australia	706	701	596	85.0	586	83.6	5	0.7
All Airlines	1 729	1 724	1 431	83.0	1 396	81.0	5	0.3
Melbourne-Sydney								
Jetstar	4 604	4 469	3 117	69.7	3 187	71.3	135	2.9
Qantas	11 826	11 280	8 811	78.1	9 075	80.5	546	4.6
QantasLink	32	29	26	89.7	28	96.6	3	9.4
Tigerair Australia	3 051	2 946	1 825	61.9	1 902	64.6	105	3.4
Virgin Australia	8 887	8 517	7 006	82.3	7 327	86.0	370	4.2
All Airlines	28 400	27 241	20 785	76.3	21 519	79.0	1 159	4.1
Melbourne-Townsville								
			(From November 2017 only)					
Jetstar	202	202	149	73.8	144	71.3	0	0.0
Tigerair Australia	128	124	93	75.0	100	80.6	4	3.1
All Airlines	330	326	242	74.2	244	74.8	4	1.2
Mildura-Melbourne								
QantasLink	1 125	1 105	948	85.8	948	85.8	20	1.8
Regional Express	920	910	662	72.7	714	78.5	10	1.1
Virgin Australia	365	365	290	79.5	297	81.4	0	0.0
All Airlines	2 410	2 380	1 900	79.8	1 959	82.3	30	1.2
Moranbah-Brisbane								
			(To September 2017 only)					
QantasLink	228	224	194	86.6	191	85.3	4	1.8
Virgin Australia	131	130	120	92.3	121	93.1	1	0.8
All Airlines	359	354	314	88.7	312	88.1	5	1.4
Mount Isa-Brisbane								
QantasLink	651	635	456	71.8	462	72.8	16	2.5
Virgin Australia	208	208	135	64.9	175	84.1	0	0.0
All Airlines	859	843	591	70.1	637	75.6	16	1.9
Newcastle-Brisbane								
Jetstar	1 030	1 010	833	82.5	857	84.9	20	1.9
QantasLink	846	812	709	87.3	698	86.0	34	4.0
Virgin Australia	997	989	870	88.0	872	88.2	8	0.8
All Airlines	2 873	2 811	2 412	85.8	2 427	86.3	62	2.2
Newcastle-Melbourne								
Jetstar	1 298	1 279	972	76.0	988	77.2	19	1.5
Virgin Australia	394	391	274	70.1	297	76.0	3	0.8
All Airlines	1 692	1 670	1 246	74.6	1 285	76.9	22	1.3

	<i>Sectors</i>		<i>Arrivals On Time</i>		<i>Departures On Time</i>		<i>Cancellations</i>	
	<i>Sched.</i>	<i>Flown</i>	<i>No.</i>	<i>%</i>	<i>No.</i>	<i>%</i>	<i>No.</i>	<i>%</i>
Newman-Perth								
Qantas	600	590	551	93.4	557	94.4	10	1.7
QantasLink	944	914	817	89.4	797	87.2	30	3.2
Virgin Australia	198	198	185	93.4	183	92.4	0	0.0
Virgin Australia Regional Airlines	272	269	231	85.9	236	87.7	3	1.1
All Airlines	2 014	1 971	1 784	90.5	1 773	90.0	43	2.1
Perth-Adelaide								
Jetstar	324	316	244	77.2	214	67.7	8	2.5
Qantas	1 189	1 187	1 084	91.3	1 092	92.0	2	0.2
QantasLink	200	189	170	89.9	182	96.3	11	5.5
Virgin Australia	596	595	529	88.9	532	89.4	1	0.2
Virgin Australia Regional Airlines	332	325	218	67.1	281	86.5	7	2.1
All Airlines	2 641	2 612	2 245	85.9	2 301	88.1	29	1.1
Perth-Brisbane								
Qantas	1 583	1 583	1 350	85.3	1 382	87.3	0	0.0
Tigerair Australia	149	147	131	89.1	120	81.6	2	1.3
Virgin Australia	1 262	1 260	1 091	86.6	1 114	88.4	2	0.2
All Airlines	2 994	2 990	2 572	86.0	2 616	87.5	4	0.1
Perth-Broome								
Qantas	67	66	50	75.8	52	78.8	1	1.5
QantasLink	1 041	1 016	912	89.8	869	85.5	25	2.4
Virgin Australia	48	48	40	83.3	38	79.2	0	0.0
Virgin Australia Regional Airlines	818	802	658	82.0	663	82.7	16	2.0
All Airlines	1 974	1 932	1 660	85.9	1 622	84.0	42	2.1
Perth-Darwin								
Qantas	391	390	361	92.6	363	93.1	1	0.3
Virgin Australia	291	291	264	90.7	256	88.0	0	0.0
Virgin Australia Regional Airlines	74	68	59	86.8	54	79.4	6	8.1
All Airlines	756	749	684	91.3	673	89.9	7	0.9
Perth-Geraldton								
QantasLink	552	541	477	88.2	473	87.4	11	2.0
Virgin Australia Regional Airlines	610	604	475	78.6	472	78.1	6	1.0
All Airlines	1 162	1 145	952	83.1	945	82.5	17	1.5
Perth-Kalgoorlie								
Qantas	129	129	117	90.7	115	89.1	0	0.0
QantasLink	835	822	758	92.2	746	90.8	13	1.6
Virgin Australia	329	324	303	93.5	304	93.8	5	1.5
Virgin Australia Regional Airlines	483	473	404	85.4	415	87.7	10	2.1
All Airlines	1 776	1 748	1 582	90.5	1 580	90.4	28	1.6
Perth-Karratha								
Qantas	196	192	184	95.8	186	96.9	4	2.0
QantasLink	2 012	1 984	1 764	88.9	1 739	87.7	28	1.4
Virgin Australia	61	60	50	83.3	53	88.3	1	1.6
Virgin Australia Regional Airlines	780	753	636	84.5	680	90.3	27	3.5
All Airlines	3 049	2 989	2 634	88.1	2 658	88.9	60	2.0
Perth-Melbourne								
Jetstar	591	566	469	82.9	416	73.5	25	4.2
Qantas	2 400	2 391	1 997	83.5	1 998	83.6	9	0.4
Tigerair Australia	628	610	461	75.6	436	71.5	18	2.9
Virgin Australia	1 585	1 580	1 295	82.0	1 340	84.8	5	0.3
All Airlines	5 204	5 147	4 222	82.0	4 190	81.4	57	1.1

	<i>Sectors</i>		<i>Arrivals On Time</i>		<i>Departures On Time</i>		<i>Cancellations</i>	
	<i>Sched.</i>	<i>Flown</i>	<i>No.</i>	<i>%</i>	<i>No.</i>	<i>%</i>	<i>No.</i>	<i>%</i>
Perth-Newman								
Qantas	600	592	559	94.4	563	95.1	8	1.3
QantasLink	945	928	816	87.9	831	89.5	17	1.8
Virgin Australia	198	198	191	96.5	191	96.5	0	0.0
Virgin Australia Regional Airlines	271	269	237	88.1	243	90.3	2	0.7
All Airlines	2 014	1 987	1 803	90.7	1 828	92.0	27	1.3
Perth-Port Hedland								
Qantas	356	352	330	93.8	327	92.9	4	1.1
QantasLink	1 228	1 180	1 021	86.5	1 021	86.5	48	3.9
Virgin Australia	223	223	209	93.7	212	95.1	0	0.0
Virgin Australia Regional Airlines	401	400	333	83.3	350	87.5	1	0.2
All Airlines	2 208	2 155	1 893	87.8	1 910	88.6	53	2.4
Perth-Sydney								
Jetstar	334	329	256	77.8	200	60.8	5	1.5
Qantas	2 458	2 451	2 094	85.4	2 023	82.5	7	0.3
Tigerair Australia	321	301	278	92.4	264	87.7	20	6.2
Virgin Australia	1 435	1 430	1 244	87.0	1 202	84.1	5	0.3
All Airlines	4 548	4 511	3 872	85.8	3 689	81.8	37	0.8
Port Hedland-Perth								
Qantas	356	351	327	93.2	317	90.3	5	1.4
QantasLink	1 215	1 147	996	86.8	1 006	87.7	68	5.6
Virgin Australia	223	223	212	95.1	208	93.3	0	0.0
Virgin Australia Regional Airlines	401	400	342	85.5	342	85.5	1	0.2
All Airlines	2 195	2 121	1 877	88.5	1 873	88.3	74	3.4
Port Lincoln-Adelaide								
QantasLink	1 289	1 273	1 144	89.9	1 153	90.6	16	1.2
Regional Express	2 383	2 338	2 074	88.7	2 120	90.7	45	1.9
All Airlines	3 672	3 611	3 218	89.1	3 273	90.6	61	1.7
Port Macquarie-Sydney								
QantasLink	1 370	1 331	963	72.4	923	69.3	39	2.8
Virgin Australia	701	692	505	73.0	498	72.0	9	1.3
All Airlines	2 071	2 023	1 468	72.6	1 421	70.2	48	2.3
Proserpine-Brisbane								
Jetstar	401	400	331	82.8	341	85.3	1	0.2
Tigerair Australia	139	136	121	89.0	124	91.2	3	2.2
Virgin Australia	379	378	335	88.6	327	86.5	1	0.3
All Airlines	919	914	787	86.1	792	86.7	5	0.5
Proserpine-Sydney								
			(From November 2017 only)					
Jetstar	104	104	87	83.7	81	77.9	0	0.0
Tigerair Australia	209	209	151	72.2	149	71.3	0	0.0
All Airlines	313	313	238	76.0	230	73.5	0	0.0
Rockhampton-Brisbane								
QantasLink	1 988	1 962	1 575	80.3	1 600	81.5	26	1.3
Virgin Australia	1 677	1 673	1 356	81.1	1 320	78.9	4	0.2
All Airlines	3 665	3 635	2 931	80.6	2 920	80.3	30	0.8
Sunshine Coast-Melbourne								
Jetstar	994	991	699	70.5	648	65.4	3	0.3
QantasLink	29	29	25	86.2	26	89.7	0	0.0
Virgin Australia	705	698	501	71.8	499	71.5	7	1.0
All Airlines	1 728	1 718	1 225	71.3	1 173	68.3	10	0.6

	<i>Sectors</i>		<i>Arrivals On Time</i>		<i>Departures On Time</i>		<i>Cancellations</i>	
	<i>Sched.</i>	<i>Flown</i>	<i>No.</i>	<i>%</i>	<i>No.</i>	<i>%</i>	<i>No.</i>	<i>%</i>
Sunshine Coast-Sydney								
Jetstar	1 303	1 292	991	76.7	925	71.6	11	0.8
QantasLink	415	401	296	73.8	321	80.0	14	3.4
Virgin Australia	585	579	473	81.7	497	85.8	6	1.0
All Airlines	2 303	2 272	1 760	77.5	1 743	76.7	31	1.3
Sydney-Adelaide								
Jetstar	1 297	1 266	1 009	79.7	991	78.3	31	2.4
Qantas	2 629	2 619	2 184	83.4	2 175	83.0	10	0.4
QantasLink	345	319	253	79.3	263	82.4	26	7.5
Tigerair Australia	561	549	369	67.2	380	69.2	12	2.1
Virgin Australia	1 967	1 952	1 609	82.4	1 704	87.3	15	0.8
All Airlines	6 799	6 705	5 424	80.9	5 513	82.2	94	1.4
Sydney-Albury								
QantasLink	1 110	1 094	835	76.3	836	76.4	16	1.4
Regional Express	1 100	1 087	869	79.9	885	81.4	13	1.2
Virgin Australia	702	694	564	81.3	566	81.6	8	1.1
All Airlines	2 912	2 875	2 268	78.9	2 287	79.5	37	1.3
Sydney-Armidale								
QantasLink	1 332	1 306	961	73.6	954	73.0	26	2.0
Regional Express	834	826	663	80.3	651	78.8	8	1.0
All Airlines	2 166	2 132	1 624	76.2	1 605	75.3	34	1.6
Sydney-Ayers Rock								
Jetstar	330	330	250	75.8	265	80.3	0	0.0
Virgin Australia	365	365	307	84.1	326	89.3	0	0.0
All Airlines	695	695	557	80.1	591	85.0	0	0.0
Sydney-Ballina								
Jetstar	997	995	821	82.5	831	83.5	2	0.2
Regional Express	261	259	189	73.0	200	77.2	2	0.8
Virgin Australia	410	408	363	89.0	368	90.2	2	0.5
All Airlines	1 668	1 662	1 373	82.6	1 399	84.2	6	0.4
Sydney-Brisbane								
Jetstar	2 073	2 009	1 568	78.0	1 504	74.9	64	3.1
Qantas	7 305	7 182	5 802	80.8	5 905	82.2	123	1.7
QantasLink	103	97	85	87.6	86	88.7	6	5.8
Tigerair Australia	1 321	1 277	926	72.5	1 004	78.6	44	3.3
Virgin Australia	6 239	6 073	4 926	81.1	5 081	83.7	166	2.7
All Airlines	17 041	16 638	13 307	80.0	13 580	81.6	403	2.4
Sydney-Cairns								
Jetstar	1 158	1 149	984	85.6	895	77.9	9	0.8
Qantas	928	928	830	89.4	808	87.1	0	0.0
Tigerair Australia	536	531	445	83.8	465	87.6	5	0.9
Virgin Australia	1 041	1 039	871	83.8	861	82.9	2	0.2
All Airlines	3 663	3 647	3 130	85.8	3 029	83.1	16	0.4
Sydney-Canberra								
Qantas	193	190	178	93.7	179	94.2	3	1.6
QantasLink	5 186	4 978	4 098	82.3	4 064	81.6	208	4.0
Virgin Australia	2 872	2 760	2 306	83.6	2 231	80.8	112	3.9
All Airlines	8 251	7 928	6 582	83.0	6 474	81.7	323	3.9

	Sectors		Arrivals On Time		Departures On Time		Cancellations	
	Sched.	Flown	No.	%	No.	%	No.	%
Sydney-Coffs Harbour								
QantasLink	1 718	1 687	1 405	83.3	1 322	78.4	31	1.8
Tigerair Australia	155	155	119	76.8	124	80.0	0	0.0
Virgin Australia	589	576	508	88.2	509	88.4	13	2.2
All Airlines	2 462	2 418	2 032	84.0	1 955	80.9	44	1.8
Sydney-Darwin								
Jetstar	283	279	234	83.9	231	82.8	4	1.4
Qantas	576	574	449	78.2	418	72.8	2	0.3
Virgin Australia	368	367	305	83.1	320	87.2	1	0.3
All Airlines	1 227	1 220	988	81.0	969	79.4	7	0.6
Sydney-Dubbo								
QantasLink	1 286	1 264	933	73.8	941	74.4	22	1.7
Regional Express	1 586	1 569	1 328	84.6	1 280	81.6	17	1.1
All Airlines	2 872	2 833	2 261	79.8	2 221	78.4	39	1.4
Sydney-Gold Coast								
Jetstar	3 401	3 368	2 676	79.5	2 628	78.0	33	1.0
Qantas	1 146	1 146	939	81.9	906	79.1	0	0.0
QantasLink	258	247	183	74.1	189	76.5	11	4.3
Tigerair Australia	1 334	1 297	936	72.2	996	76.8	37	2.8
Virgin Australia	2 962	2 923	2 393	81.9	2 464	84.3	39	1.3
All Airlines	9 101	8 981	7 127	79.4	7 183	80.0	120	1.3
Sydney-Hamilton Island								
Jetstar	315	314	284	90.4	266	84.7	1	0.3
Qantas	143	143	130	90.9	125	87.4	0	0.0
QantasLink	191	178	138	77.5	136	76.4	13	6.8
Virgin Australia	306	300	267	89.0	269	89.7	6	2.0
All Airlines	955	935	819	87.6	796	85.1	20	2.1
Sydney-Hobart								
Jetstar	984	981	846	86.2	844	86.0	3	0.3
Qantas	194	194	177	91.2	163	84.0	0	0.0
QantasLink	498	487	375	77.0	372	76.4	11	2.2
Virgin Australia	851	844	746	88.4	762	90.3	7	0.8
All Airlines	2 527	2 506	2 144	85.6	2 141	85.4	21	0.8
Sydney-Launceston								
Jetstar	567	566	477	84.3	447	79.0	1	0.2
Virgin Australia	359	359	326	90.8	313	87.2	0	0.0
All Airlines	926	925	803	86.8	760	82.2	1	0.1
Sydney-Melbourne								
Jetstar	4 610	4 476	3 222	72.0	3 209	71.7	134	2.9
Qantas	11 942	11 385	8 461	74.3	8 787	77.2	557	4.7
QantasLink	33	31	30	96.8	28	90.3	2	6.1
Tigerair Australia	3 052	2 946	1 704	57.8	1 826	62.0	106	3.5
Virgin Australia	8 761	8 383	6 602	78.8	7 104	84.7	378	4.3
All Airlines	28 398	27 221	20 019	73.5	20 954	77.0	1 177	4.1
Sydney-Perth								
Jetstar	335	332	253	76.2	239	72.0	3	0.9
Qantas	2 476	2 473	1 923	77.8	1 892	76.5	3	0.1
Tigerair Australia	320	303	247	81.5	253	83.5	17	5.3
Virgin Australia	1 439	1 437	1 088	75.7	1 105	76.9	2	0.1
All Airlines	4 570	4 545	3 511	77.2	3 489	76.8	25	0.5

	<i>Sectors</i>		<i>Arrivals On Time</i>		<i>Departures On Time</i>		<i>Cancellations</i>	
	<i>Sched.</i>	<i>Flown</i>	<i>No.</i>	<i>%</i>	<i>No.</i>	<i>%</i>	<i>No.</i>	<i>%</i>
Sydney-Port Macquarie								
QantasLink	1 369	1 334	945	70.8	957	71.7	35	2.6
Virgin Australia	701	695	539	77.6	526	75.7	6	0.9
All Airlines	2 070	2 029	1 484	73.1	1 483	73.1	41	2.0
Sydney-Proserpine								
			(From November 2017 only)					
Jetstar	104	104	95	91.3	95	91.3	0	0.0
Tigerair Australia	209	209	165	78.9	160	76.6	0	0.0
All Airlines	313	313	260	83.1	255	81.5	0	0.0
Sydney-Sunshine Coast								
Jetstar	1 302	1 294	1 052	81.3	999	77.2	8	0.6
QantasLink	414	402	326	81.1	329	81.8	12	2.9
Virgin Australia	584	580	513	88.4	515	88.8	4	0.7
All Airlines	2 300	2 276	1 891	83.1	1 843	81.0	24	1.0
Sydney-Tamworth								
QantasLink	1 565	1 525	1 216	79.7	1 212	79.5	40	2.6
Virgin Australia	571	565	457	80.9	469	83.0	6	1.1
All Airlines	2 136	2 090	1 673	80.0	1 681	80.4	46	2.2
Sydney-Townsville								
Jetstar	307	306	235	76.8	224	73.2	1	0.3
Qantas	4	3	2	66.7	3	100.0	1	25.0
Virgin Australia	278	276	249	90.2	244	88.4	2	0.7
All Airlines	589	585	486	83.1	471	80.5	4	0.7
Sydney-Wagga Wagga								
QantasLink	1 241	1 225	1 019	83.2	982	80.2	16	1.3
Regional Express	1 395	1 372	1 177	85.8	1 187	86.5	23	1.6
All Airlines	2 636	2 597	2 196	84.6	2 169	83.5	39	1.5
Tamworth-Sydney								
QantasLink	1 569	1 522	1 233	81.0	1 232	80.9	47	3.0
Virgin Australia	572	565	476	84.2	491	86.9	7	1.2
All Airlines	2 141	2 087	1 709	81.9	1 723	82.6	54	2.5
Townsville-Brisbane								
Jetstar	575	574	445	77.5	428	74.6	1	0.2
Qantas	864	862	737	85.5	736	85.4	2	0.2
QantasLink	871	842	686	81.5	713	84.7	29	3.3
Virgin Australia	1 630	1 613	1 480	91.8	1 463	90.7	17	1.0
All Airlines	3 940	3 891	3 348	86.0	3 340	85.8	49	1.2
Townsville-Cairns								
QantasLink	1 605	1 587	1 453	91.6	1 450	91.4	18	1.1
Regional Express	371	356	325	91.3	328	92.1	15	4.0
All Airlines	1 976	1 943	1 778	91.5	1 778	91.5	33	1.7
Townsville-Melbourne								
			(From November 2017 only)					
Jetstar	202	202	141	69.8	133	65.8	0	0.0
Tigerair Australia	128	124	86	69.4	80	64.5	4	3.1
All Airlines	330	326	227	69.6	213	65.3	4	1.2
Townsville-Sydney								
Jetstar	307	305	238	78.0	206	67.5	2	0.7
Qantas	4	3	2	66.7	2	66.7	1	25.0
Virgin Australia	278	276	231	83.7	229	83.0	2	0.7
All Airlines	589	584	471	80.7	437	74.8	5	0.8

	<i>Sectors</i>		<i>Arrivals On Time</i>		<i>Departures On Time</i>		<i>Cancellations</i>	
	<i>Sched.</i>	<i>Flown</i>	<i>No.</i>	<i>%</i>	<i>No.</i>	<i>%</i>	<i>No.</i>	<i>%</i>
Wagga Wagga-Sydney								
QantasLink	1 243	1 226	1 017	83.0	1 014	82.7	17	1.4
Regional Express	1 390	1 366	1 076	78.8	1 145	83.8	24	1.7
All Airlines	2 633	2 592	2 093	80.7	2 159	83.3	41	1.6

Airports

On time performance is reported for all routes where the passenger load averages over 8000 passengers per month, and where two or more airlines operate in competition. The following data reports by airport against flights operated on those routes only. This year, 8 major city airports and 33 regional city airports are covered.

Airport	Arrivals			Departures		
	Sectors	On Time		Sectors	On Time	
	Flown	No.	%	Flown	No.	%
Adelaide						
Jetstar	3 514	2 728	77.6	3 504	2 710	77.3
Qantas	9 051	7 747	85.6	9 043	7 842	86.7
QantasLink	2 202	1 933	87.8	2 203	1 956	88.8
Regional Express	2 338	2 074	88.7	2 336	2 172	93.0
Tigerair Australia	1 764	1 344	76.2	1 762	1 176	66.7
Virgin Australia	7 731	6 473	83.7	7 728	6 675	86.4
Virgin Australia Regional Airlines	490	340	69.4	484	338	69.8
All Airlines	27 090	22 639	83.6	27 060	22 869	84.5

Relates to services to and from Alice Springs, Brisbane, Canberra, Gold Coast, Melbourne, Perth, Port Lincoln and Sydney.

Albury

QantasLink	1 094	835	76.3	1 091	850	77.9
Regional Express	1 087	869	79.9	1 089	928	85.2
Virgin Australia	694	564	81.3	694	550	79.3
All Airlines	2 875	2 268	78.9	2 874	2 328	81.0

Relates to services to and from Sydney only.

Alice Springs

Qantas	363	315	86.8	362	302	83.4
QantasLink	629	591	94.0	626	589	94.1
Virgin Australia	142	131	92.3	142	125	88.0
Virgin Australia Regional Airlines	326	226	69.3	326	240	73.6
All Airlines	1 460	1 263	86.5	1 456	1 256	86.3

Relates to services to and from Adelaide and Darwin.

Armidale

QantasLink	1 306	961	73.6	1 301	958	73.6
Regional Express	826	663	80.3	823	611	74.2
All Airlines	2 132	1 624	76.2	2 124	1 569	73.9

Relates to services to and from Sydney only.

Ayers Rock

Jetstar	330	250	75.8	329	206	62.6
Virgin Australia	365	307	84.1	364	280	76.9
All Airlines	695	557	80.1	693	486	70.1

Relates to services to and from Sydney only.

Ballina

Jetstar	995	821	82.5	995	696	69.9
Regional Express	259	189	73.0	257	185	72.0
Virgin Australia	408	363	89.0	407	354	87.0
All Airlines	1 662	1 373	82.6	1 659	1 235	74.4

Relates to services to and from Sydney only.

Airport	Arrivals			Departures		
	Sectors	On Time		Sectors	On Time	
	Flown	No.	%	Flown	No.	%
Brisbane						
Jetstar	8 039	6 397	79.6	8 024	6 158	76.7
Qantas	17 619	14 554	82.6	17 604	14 683	83.4
QantasLink	12 578	10 351	82.3	12 647	10 671	84.4
Tigerair Australia	4 166	3 107	74.6	4 164	3 163	76.0
Virgin Australia	25 216	21 351	84.7	25 224	21 805	86.4
All Airlines	67 618	55 760	82.5	67 663	56 480	83.5
Relates to services to and from Adelaide, Bundaberg, Cairns, Canberra, Darwin, Emerald, Gladstone, Hamilton Island, Hobart, Mackay, Melbourne, Moranbah (to September 2017), Mount Isa, Newcastle, Perth, Proserpine, Rockhampton, Sydney and Townsville.						
Broome						
Qantas	66	50	75.8	66	47	71.2
QantasLink	1 016	912	89.8	1 004	840	83.7
Virgin Australia	48	40	83.3	48	32	66.7
Virgin Australia Regional Airlines	802	658	82.0	799	621	77.7
All Airlines	1 932	1 660	85.9	1 917	1 540	80.3
Relates to services to and from Perth only.						
Bundaberg						
QantasLink	1 360	1 162	85.4	1 361	1 172	86.1
Virgin Australia	364	295	81.0	364	297	81.6
All Airlines	1 724	1 457	84.5	1 725	1 469	85.2
Relates to services to and from Brisbane only.						
Cairns						
Jetstar	3 523	2 934	83.3	3 524	2 800	79.5
Qantas	2 617	2 273	86.9	2 618	2 216	84.6
QantasLink	1 847	1 646	89.1	1 868	1 681	90.0
Regional Express	356	325	91.3	362	321	88.7
Tigerair Australia	1 464	1 188	81.1	1 460	1 052	72.1
Virgin Australia	2 935	2 522	85.9	2 933	2 464	84.0
All Airlines	12 742	10 888	85.4	12 765	10 534	82.5
Relates to services to and from Brisbane, Melbourne, Sydney and Townsville.						
Canberra						
Qantas	3 476	3 018	86.8	3 475	3 175	91.4
QantasLink	7 368	6 077	82.5	7 354	6 220	84.6
Tigerair Australia	516	375	72.7	513	321	62.6
Virgin Australia	6 147	5 206	84.7	6 147	5 273	85.8
All Airlines	17 507	14 676	83.8	17 489	14 989	85.7
Relates to services to and from Adelaide, Brisbane, Melbourne and Sydney.						
Coffs Harbour						
QantasLink	1 687	1 405	83.3	1 687	1 403	83.2
Tigerair Australia	155	119	76.8	155	114	73.5
Virgin Australia	576	508	88.2	575	510	88.7
All Airlines	2 418	2 032	84.0	2 417	2 027	83.9
Relates to services to and from Sydney only.						

Airport	Arrivals			Departures		
	Sectors Flown	On Time		Sectors Flown	On Time	
		No.	%		No.	%
Darwin						
Jetstar	879	724	82.4	878	648	73.8
Qantas	1 865	1 604	86.0	1 862	1 492	80.1
QantasLink	626	588	93.9	629	592	94.1
Tigerair Australia	210	161	76.7	210	186	88.6
Virgin Australia	1 466	1 194	81.4	1 467	1 215	82.8
Virgin Australia Regional Airlines	229	172	75.1	228	187	82.0
All Airlines	5 275	4 443	84.2	5 274	4 320	81.9
Relates to services to and from Alice Springs, Brisbane, Melbourne, Perth and Sydney.						
Dubbo						
QantasLink	1 264	933	73.8	1 262	988	78.3
Regional Express	1 569	1 328	84.6	1 579	1 323	83.8
All Airlines	2 833	2 261	79.8	2 841	2 311	81.3
Relates to services to and from Sydney only.						
Emerald						
QantasLink	1 261	1 085	86.0	1 251	1 042	83.3
Virgin Australia	618	540	87.4	618	549	88.8
All Airlines	1 879	1 625	86.5	1 869	1 591	85.1
Relates to services to and from Brisbane only.						
Geraldton						
QantasLink	541	477	88.2	538	490	91.1
Virgin Australia Regional Airlines	604	475	78.6	603	482	79.9
All Airlines	1 145	952	83.1	1 141	972	85.2
Relates to services to and from Perth only.						
Gladstone						
QantasLink	1 524	1 261	82.7	1 518	1 256	82.7
Virgin Australia	876	718	82.0	876	739	84.4
All Airlines	2 400	1 979	82.5	2 394	1 995	83.3
Relates to services to and from Brisbane only.						
Gold Coast						
Jetstar	6 021	4 763	79.1	6 009	4 639	77.2
Qantas	1 531	1 261	82.4	1 531	1 258	82.2
QantasLink	247	183	74.1	247	180	72.9
Tigerair Australia	2 256	1 645	72.9	2 253	1 447	64.2
Virgin Australia	5 521	4 583	83.0	5 515	4 341	78.7
All Airlines	15 576	12 435	79.8	15 555	11 865	76.3
Relates to services to and from Adelaide, Melbourne and Sydney.						
Hamilton Island						
Jetstar	314	284	90.4	314	259	82.5
Qantas	143	130	90.9	143	131	91.6
QantasLink	531	446	84.0	528	438	83.0
Virgin Australia	662	588	88.8	662	580	87.6
All Airlines	1 650	1 448	87.8	1 647	1 408	85.5
Relates to services to and from Brisbane and Sydney.						

Airport	Arrivals			Departures		
	Sectors Flown	On Time		Sectors Flown	On Time	
		No.	%		No.	%
Hobart						
Jetstar	3 408	2 674	78.5	3 401	2 165	63.7
Qantas	590	506	85.8	586	499	85.2
QantasLink	1 523	1 147	75.3	1 519	1 240	81.6
Tigerair Australia	445	334	75.1	445	284	63.8
Virgin Australia	2 911	2 435	83.6	2 914	2 234	76.7
All Airlines	8 877	7 096	79.9	8 865	6 422	72.4
Relates to services to and from Brisbane, Melbourne and Sydney.						
Kalgoorlie						
Qantas	129	117	90.7	129	120	93.0
QantasLink	822	758	92.2	820	755	92.1
Virgin Australia	324	303	93.5	322	280	87.0
Virgin Australia Regional Airlines	473	404	85.4	473	414	87.5
All Airlines	1 748	1 582	90.5	1 744	1 569	90.0
Relates to services to and from Perth only.						
Karratha						
Qantas	192	184	95.8	192	182	94.8
QantasLink	1 984	1 764	88.9	1 957	1 749	89.4
Virgin Australia	60	50	83.3	59	49	83.1
Virgin Australia Regional Airlines	753	636	84.5	750	630	84.0
All Airlines	2 989	2 634	88.1	2 958	2 610	88.2
Relates to services to and from Perth only.						
Launceston						
Jetstar	2 126	1 686	79.3	2 125	1 467	69.0
QantasLink	1 331	1 103	82.9	1 330	1 112	83.6
Virgin Australia	1 524	1 247	81.8	1 524	1 275	83.7
All Airlines	4 981	4 036	81.0	4 979	3 854	77.4
Relates to services to and from Melbourne and Sydney.						
Mackay						
Jetstar	433	332	76.7	431	286	66.4
QantasLink	1 276	1 109	86.9	1 280	1 088	85.0
Virgin Australia	1 643	1 446	88.0	1 645	1 496	90.9
All Airlines	3 352	2 887	86.1	3 356	2 870	85.5
Relates to services to and from Brisbane only.						
Melbourne						
Jetstar	17 668	12 983	73.5	17 704	13 045	73.7
Qantas	25 982	20 634	79.4	26 002	21 048	80.9
QantasLink	4 581	3 790	82.7	4 583	3 836	83.7
Regional Express	910	662	72.7	912	790	86.6
Tigerair Australia	8 305	5 265	63.4	8 314	6 006	72.2
Virgin Australia	26 858	21 016	78.2	26 861	22 823	85.0
All Airlines	84 304	64 350	76.3	84 376	67 548	80.1
Relates to services to and from Adelaide, Brisbane, Cairns, Canberra, Darwin, Gold Coast, Hobart, Launceston, Mildura, Newcastle, Perth, Sunshine Coast, Sydney and Townsville (from November 2017).						

Airport	Arrivals			Departures		
	Sectors Flown	On Time		Sectors Flown	On Time	
		No.	%		No.	%
Mildura						
QantasLink	1 106	957	86.5	1 105	948	85.8
Regional Express	912	744	81.6	910	714	78.5
Virgin Australia	365	286	78.4	365	297	81.4
All Airlines	2 383	1 987	83.4	2 380	1 959	82.3
Relates to services to and from Melbourne only.						
Moranbah (To September 2017 only)						
QantasLink	237	205	86.5	224	191	85.3
Virgin Australia	131	118	90.1	130	121	93.1
All Airlines	368	323	87.8	354	312	88.1
Relates to services to and from Brisbane only (to September 2017).						
Mount Isa						
QantasLink	645	448	69.5	635	462	72.8
Virgin Australia	208	182	87.5	208	175	84.1
All Airlines	853	630	73.9	843	637	75.6
Relates to services to and from Brisbane only.						
Newcastle						
Jetstar	2 294	1 739	75.8	2 289	1 845	80.6
QantasLink	816	681	83.5	812	698	86.0
Virgin Australia	1 381	1 191	86.2	1 380	1 169	84.7
All Airlines	4 491	3 611	80.4	4 481	3 712	82.8
Relates to services to and from Brisbane and Melbourne.						
Newman						
Qantas	592	559	94.4	590	557	94.4
QantasLink	928	816	87.9	914	797	87.2
Virgin Australia	198	191	96.5	198	183	92.4
Virgin Australia Regional Airlines	269	237	88.1	269	236	87.7
All Airlines	1 987	1 803	90.7	1 971	1 773	90.0
Relates to services to and from Perth only.						
Perth						
Jetstar	1 225	994	81.1	1 211	830	68.5
Qantas	9 331	7 644	81.9	9 333	8 101	86.8
QantasLink	6 567	5 845	89.0	6 660	5 861	88.0
Tigerair Australia	1 060	805	75.9	1 058	820	77.5
Virgin Australia	6 008	4 792	79.8	6 009	5 242	87.2
Virgin Australia Regional Airlines	3 680	2 981	81.0	3 694	3 158	85.5
All Airlines	27 871	23 061	82.7	27 965	24 012	85.9
Relates to services to and from Adelaide, Brisbane, Broome, Darwin, Geraldton, Kalgoorlie, Karratha, Melbourne, Newman, Port Hedland and Sydney.						
Port Hedland						
Qantas	352	330	93.8	351	317	90.3
QantasLink	1 180	1 021	86.5	1 147	1 006	87.7
Virgin Australia	223	209	93.7	223	208	93.3
Virgin Australia Regional Airlines	400	333	83.3	400	342	85.5
All Airlines	2 155	1 893	87.8	2 121	1 873	88.3
Relates to services to and from Perth only.						

Airport	Arrivals			Departures		
	Sectors	On Time		Sectors	On Time	
	Flown	No.	%	Flown	No.	%
Port Lincoln						
QantasLink	1 279	1 157	90.5	1 273	1 153	90.6
Regional Express	2 336	2 109	90.3	2 338	2 120	90.7
All Airlines	3 615	3 266	90.3	3 611	3 273	90.6
Relates to services to and from Adelaide only.						
Port Macquarie						
QantasLink	1 334	945	70.8	1 331	923	69.3
Virgin Australia	695	539	77.6	692	498	72.0
All Airlines	2 029	1 484	73.1	2 023	1 421	70.2
Relates to services to and from Sydney only.						
Proserpine						
Jetstar	505	452	89.5	504	422	83.7
Tigerair Australia	346	291	84.1	345	273	79.1
Virgin Australia	378	338	89.4	378	327	86.5
All Airlines	1 229	1 081	88.0	1 227	1 022	83.3
Relates to services to and from Brisbane and Sydney (from November 2017).						
Rockhampton						
QantasLink	1 977	1 596	80.7	1 962	1 600	81.5
Virgin Australia	1 672	1 203	71.9	1 673	1 320	78.9
All Airlines	3 649	2 799	76.7	3 635	2 920	80.3
Relates to services to and from Brisbane only.						
Sunshine Coast						
Jetstar	2 287	1 864	81.5	2 283	1 573	68.9
QantasLink	432	349	80.8	430	347	80.7
Virgin Australia	1 281	1 109	86.6	1 277	996	78.0
All Airlines	4 000	3 322	83.1	3 990	2 916	73.1
Relates to services to and from Melbourne and Sydney.						
Sydney						
Jetstar	17 732	13 449	75.8	17 769	13 668	76.9
Qantas	26 826	21 892	81.6	26 837	21 361	79.6
QantasLink	16 140	12 953	80.3	16 174	12 671	78.3
Regional Express	5 114	3 962	77.5	5 113	4 203	82.2
Tigerair Australia	7 259	4 797	66.1	7 267	5 208	71.7
Virgin Australia	30 589	25 467	83.3	30 596	25 737	84.1
All Airlines	103 660	82 520	79.6	103 756	82 848	79.8
Relates to services to and from Adelaide, Albury, Armidale, Ayers Rock, Ballina, Brisbane, Cairns, Canberra, Coffs Harbour, Darwin, Dubbo, Gold Coast, Hamilton Island, Hobart, Launceston, Melbourne, Perth, Port Macquarie, Proserpine (from November 2017), Sunshine Coast, Tamworth, Townsville and Wagga Wagga.						
Tamworth						
QantasLink	1 525	1 216	79.7	1 522	1 232	80.9
Virgin Australia	565	457	80.9	565	491	86.9
All Airlines	2 090	1 673	80.0	2 087	1 723	82.6
Relates to services to and from Sydney only.						

<i>Airport</i>	<i>Arrivals</i>			<i>Departures</i>		
	<i>Sectors Flown</i>	<i>On Time</i>		<i>Sectors Flown</i>	<i>On Time</i>	
		<i>No.</i>	<i>%</i>		<i>No.</i>	<i>%</i>
Townsville						
Jetstar	1 082	833	77.0	1 081	767	71.0
Qantas	864	697	80.7	865	738	85.3
QantasLink	2 459	2 189	89.0	2 429	2 163	89.0
Regional Express	362	314	86.7	356	328	92.1
Tigerair Australia	124	93	75.0	124	80	64.5
Virgin Australia	1 889	1 658	87.8	1 889	1 692	89.6
All Airlines	6 780	5 784	85.3	6 744	5 768	85.5

Relates to services to and from Brisbane, Cairns, Melbourne (from November 2017) and Sydney.

Wagga Wagga

QantasLink	1 225	1 019	83.2	1 226	1 014	82.7
Regional Express	1 372	1 177	85.8	1 366	1 145	83.8
All Airlines	2 597	2 196	84.6	2 592	2 159	83.3

Relates to services to and from Sydney only.

Definitions

On time arrival	A flight arrival is counted as "on time" if it arrived at the gate before 15 minutes after the scheduled arrival time shown in the carriers' schedule. Neither diverted nor cancelled flights count as on time.
On time departure	A flight departure is counted as "on time" if it departs the gate before 15 minutes after the scheduled departure time shown in the carriers' schedule.
Cancellation	A flight removed from service within 7 days of scheduled departure is regarded as a cancellation.
On time departure percentage	The percentage of on time departures is measured against the number of departures <i>operated</i> on any particular sector.
On time arrival percentage	The percentage of on time arrivals is measured against the number of arrivals <i>operated</i> on any particular sector.
Cancellation percentage	The percentage of cancellations is measured against the number of services <i>scheduled</i> on any particular sector.
